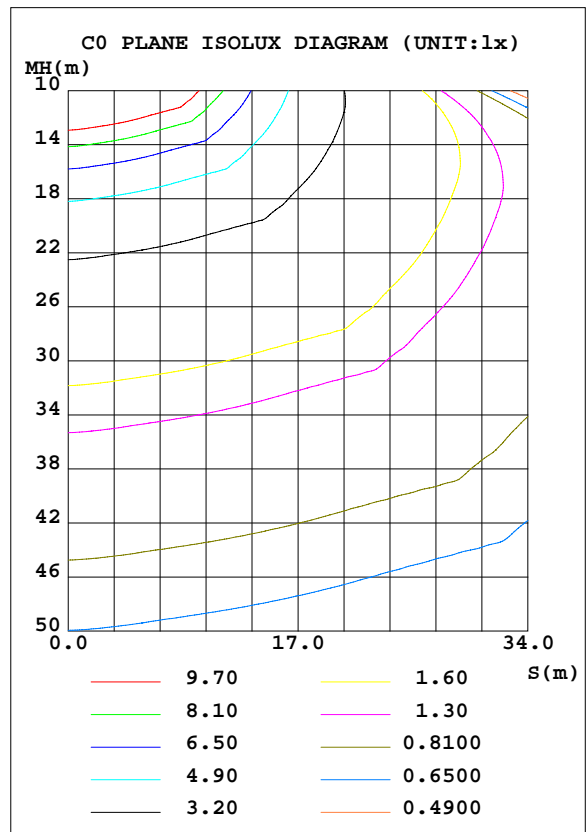
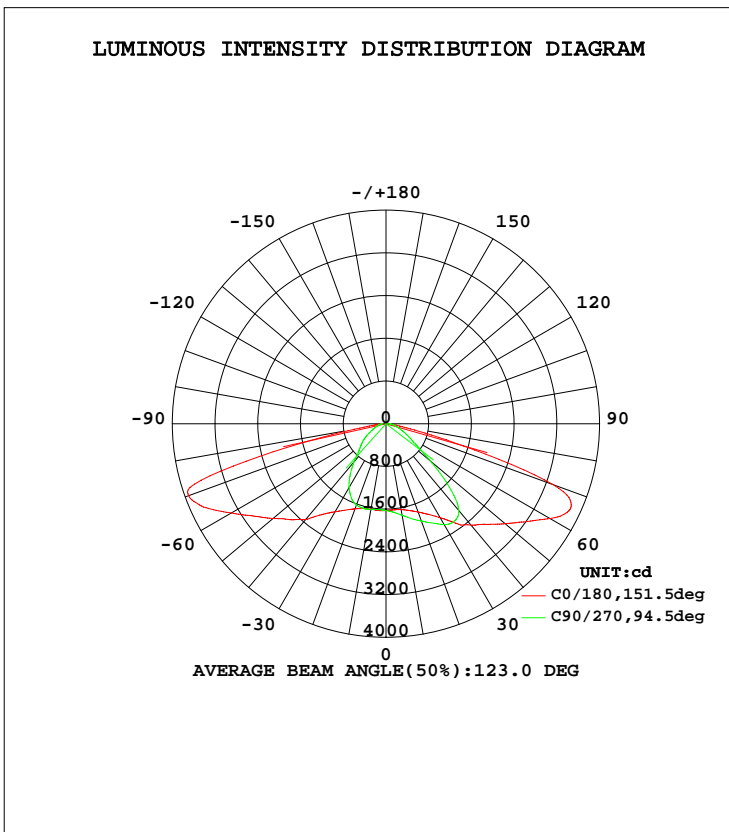


LUMINAIRE PHOTOMETRIC TEST REPORT

Test:U:220.4V I:0.3810A P:80.70W PF:0.9590 Lamp Flux:8130.46x1 lm		
NAME: LED STREET LIGHT	TYPE:IP66	WEIGHT:2
SPEC.:CREE XTE	DIM.:	SERIAL No.:
MFR.: QINHAN LIGHTING	SUR.:	PROTECTION ANGLE:

DATA OF LAMP		PHOTOMETRIC DATA Eff: 100.75 lm/W			
MODEL	QH-STL-LD60S-80W	Imax(cd)	4226	S/MH(C0/180)	2.18
NOMINAL POWER(W)	80	LOR(%)	100.0	S/MH(C90/270)	1.20
RATED VOLTAGE(V)	220	TOTAL FLUX(lm)	8130.5	η UP, DN(C0-180)	0.0, 58.9
NOMINAL FLUX(lm)	8130.46	CIE CLASS	DIRECT	η UP, DN(C180-360)	0.0, 41.1
LAMPS INSIDE	1	η up(%)	0.0	CIBSE SHR NOM	1.50
TEST VOLTAGE(V)	220.3	η down(%)	100.0	CIBSE SHR MAX	1.55



C Range: 0 - 360DEG
 C Interval: 15.0DEG
 Test Speed: HIGH
 Temperature:25.3DEG
 Operators:
 Test Date:2014-10-31

γ Range: 0 - 90DEG
 γ Interval: 0.5DEG
 Test System:EVERFINE GO-2000B_V1 SYSTEM V2.0.279
 Humidity:65.0%
 Test Distance:8.000m [K=1.0000]
 Remarks: 2

ZONAL FLUX DIAGRAM

ZONAL FLUX DIAGRAM:

γ	C0	C45	C90	C135	C180	C225	C270	C315	γ	Φ zone	Φ total	lum, lamp
5	1620	1642	1665	1651	1631	1621	1615	1613	0- 5	38.95	38.95	0.48,0.48
10	1634	1682	1742	1685	1627	1624	1629	1623	5- 10	117.6	156.5	1.93,1.93
15	1682	1758	1838	1744	1646	1640	1642	1655	10- 15	199.1	355.6	4.37,4.37
20	1761	1883	1941	1837	1696	1670	1620	1699	15- 20	285.3	640.9	7.88,7.88
25	1872	2046	2053	1968	1783	1707	1534	1743	20- 25	377.3	1018	12.5,12.5
30	2034	2271	2182	2139	1904	1731	1381	1748	25- 30	475.9	1494	18.4,18.4
35	2273	2622	2229	2391	2073	1697	1172	1690	30- 35	582.7	2077	25.5,25.5
40	2476	2995	2123	2722	2342	1593	935.2	1536	35- 40	691.3	2768	34,34
45	2666	3322	1678	3064	2539	1372	720.3	1256	40- 45	784.8	3553	43.7,43.7
50	2913	3125	1085	3079	2760	1051	603.1	881.1	45- 50	833.3	4386	53.9,53.9
55	3200	2120	695.1	2331	3018	701.1	498.0	629.0	50- 55	827.7	5214	64.1,64.1
60	3549	945.2	503.4	1291	3343	564.7	384.6	506.9	55- 60	789.1	6003	73.8,73.8
65	3801	438.4	370.4	567.2	3722	430.4	297.3	344.0	60- 65	725.2	6728	82.8,82.8
70	3317	262.9	276.0	328.1	3932	285.0	225.5	225.2	65- 70	633.9	7362	90.6,90.6
75	1166	170.4	196.5	215.0	2710	191.4	158.1	150.7	70- 75	438.5	7801	95.9,95.9
80	280.3	117.3	160.6	144.7	603.9	128.3	141.0	106.1	75- 80	190.5	7991	98.3,98.3
85	106.4	84.77	93.44	101.3	170.1	84.97	93.92	87.37	80- 85	88.20	8079	99.4,99.4
90	37.04	38.31	29.94	63.67	62.29	59.96	58.95	32.87	85- 90	51.17	8130	100,100
95									90- 95			
100									95-100			
105									100-105			
110									105-110			
115									110-115			
120									115-120			
125									120-125			
130									125-130			
135									130-135			
140									135-140			
145									140-145			
150									145-150			
155									150-155			
160									155-160			
165									160-165			
170									165-170			
175									170-175			
180									175-180			
DEG	LUMINOUS INTENSITY:cd								UNIT:lm			

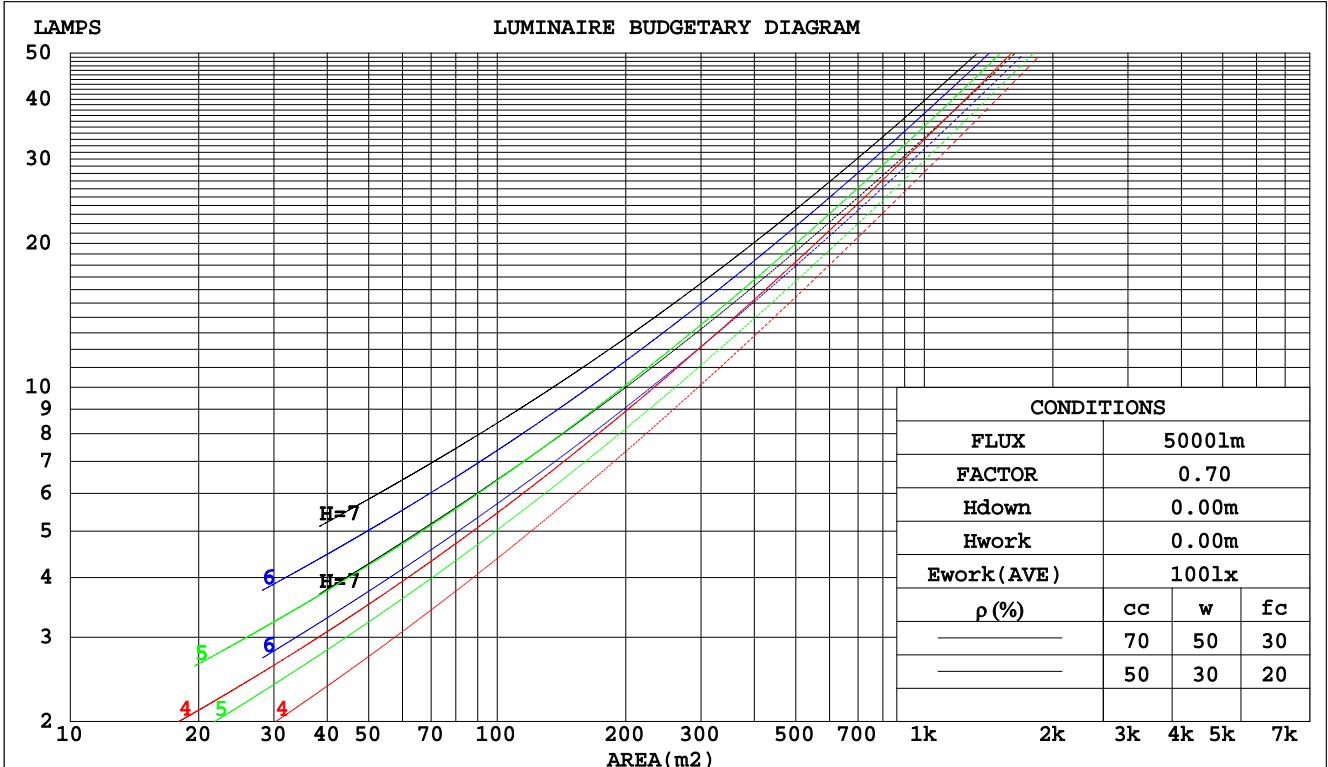
C Range: 0 - 360DEG
 C Interval: 15.0DEG
 Test Speed: HIGH
 Temperature:25.3DEG
 Operators:
 Test Date:2014-10-31

γ Range: 0 - 90DEG
 γ Interval: 0.5DEG
 Test System:EVERFINE GO-2000B_V1 SYSTEM V2.0.279
 Humidity:65.0%
 Test Distance:8.000m [K=1.0000]
 Remarks: 2

CU AND LUMINAIRE BUDGETARY ESTIMATE DIAGRAM

Test:U:220.4V I:0.3810A P:80.70W PF:0.9590 Lamp Flux:8130.46x1 lm		
NAME: LED STREET LIGHT	TYPE:IP66	WEIGHT:2
SPEC.:CREE XTE	DIM.:	SERIAL No.:
MFR.: QINHAN LIGHTING	SUR.:	PROTECTION ANGLE:

pcc	80%			70%			50%			30%			10%			0
pw	50%	30%	10%	50%	30%	10%	50%	30%	10%	50%	30%	10%	50%	30%	10%	0
pfc	20%			20%			20%			20%			20%			0
RCR	RCR:Room Cavity Ratio															
	Coefficients of Utilization(CU)															
0.0	1.19	1.19	1.19	1.16	1.16	1.16	1.11	1.11	1.11	1.06	1.06	1.06	1.02	1.02	1.02	.00
1.0	1.03	.98	.94	1.00	.96	.92	.96	.93	.89	.92	.89	.87	.89	.86	.84	.82
2.0	.88	.81	.74	.86	.79	.73	.82	.77	.72	.79	.74	.70	.76	.72	.68	.66
3.0	.76	.67	.60	.74	.66	.59	.71	.64	.58	.68	.62	.57	.66	.61	.56	.54
4.0	.66	.57	.49	.65	.56	.49	.62	.54	.48	.60	.53	.47	.57	.52	.47	.44
5.0	.58	.48	.41	.57	.48	.41	.55	.47	.40	.53	.46	.40	.51	.45	.40	.37
6.0	.52	.42	.35	.51	.42	.35	.49	.41	.35	.47	.40	.34	.45	.39	.34	.32
7.0	.46	.37	.30	.45	.36	.30	.44	.36	.30	.42	.35	.30	.41	.34	.29	.27
8.0	.42	.33	.26	.41	.32	.26	.40	.32	.26	.38	.31	.26	.37	.31	.26	.24
9.0	.38	.29	.23	.37	.29	.23	.36	.28	.23	.35	.28	.23	.34	.27	.23	.21
10.0	.35	.26	.21	.34	.26	.21	.33	.26	.21	.32	.25	.20	.31	.25	.20	.18



C Range: 0 - 360DEG
 C Interval: 15.0DEG
 Test Speed: HIGH
 Temperature:25.3DEG
 Operators:
 Test Date:2014-10-31

γ Range: 0 - 90DEG
 γ Interval: 0.5DEG
 Test System:EVERFINE GO-2000B_V1 SYSTEM V2.0.279
 Humidity:65.0%
 Test Distance:8.000m [K=1.0000]
 Remarks: 2

WEC AND CCEC

Test:U:220.4V I:0.3810A P:80.70W PF:0.9590 Lamp Flux:8130.46x1 lm		
NAME: LED STREET LIGHT	TYPE:IP66	WEIGHT:2
SPEC.:CREE XTE	DIM.:	SERIAL No.:
MFR.: QINHAN LIGHTING	SUR.:	PROTECTION ANGLE:

ρcc	80%			70%			50%			30%			10%			0
ρw	50%	30%	10%	50%	30%	10%	50%	30%	10%	50%	30%	10%	50%	30%	10%	0
ρfc	20%			20%			20%			20%			20%			0
RCR	RCR:Room Cavity Ratio						Wall Exitance Coefficients(WEC)									
0.0																
1.0	.332	.189	.060	.325	.186	.059	.312	.179	.057	.300	.173	.055	.288	.167	.054	
2.0	.315	.173	.053	.309	.170	.052	.297	.165	.051	.286	.161	.050	.276	.156	.049	
3.0	.292	.156	.047	.287	.153	.046	.276	.150	.045	.266	.146	.045	.257	.142	.044	
4.0	.269	.140	.041	.264	.138	.041	.255	.135	.040	.246	.132	.040	.238	.129	.039	
5.0	.248	.126	.037	.244	.125	.036	.235	.122	.036	.227	.120	.036	.220	.118	.035	
6.0	.229	.115	.033	.225	.114	.033	.218	.112	.032	.211	.109	.032	.204	.107	.032	
7.0	.212	.105	.030	.209	.104	.030	.202	.102	.029	.196	.100	.029	.190	.099	.029	
8.0	.198	.097	.027	.195	.096	.027	.188	.094	.027	.183	.093	.027	.178	.091	.027	
9.0	.185	.089	.025	.182	.089	.025	.176	.087	.025	.171	.086	.025	.166	.085	.024	
10.0	.173	.083	.023	.170	.082	.023	.166	.081	.023	.161	.080	.023	.157	.079	.023	

ρcc	80%			70%			50%			30%			10%			0
ρw	50%	30%	10%	50%	30%	10%	50%	30%	10%	50%	30%	10%	50%	30%	10%	0
ρfc	20%			20%			20%			20%			20%			0
RCR	RCR:Room Cavity Ratio						Ceiling Cavity Exitance Coefficients(CCEC)									
0.0	.190	.190	.190	.163	.163	.163	.111	.111	.111	.064	.064	.064	.020	.020	.020	
1.0	.182	.156	.133	.156	.134	.114	.106	.092	.079	.061	.053	.046	.020	.017	.015	
2.0	.175	.132	.095	.150	.113	.082	.103	.078	.057	.059	.046	.034	.019	.015	.011	
3.0	.169	.114	.071	.145	.099	.062	.099	.069	.043	.057	.040	.026	.018	.013	.008	
4.0	.162	.101	.055	.139	.088	.048	.095	.061	.034	.055	.036	.020	.018	.012	.007	
5.0	.155	.091	.045	.133	.079	.039	.091	.055	.027	.053	.032	.016	.017	.011	.005	
6.0	.148	.083	.037	.127	.072	.032	.087	.050	.023	.051	.030	.014	.016	.010	.004	
7.0	.141	.076	.031	.121	.066	.027	.084	.046	.019	.049	.027	.012	.016	.009	.004	
8.0	.134	.071	.027	.115	.061	.024	.080	.043	.017	.046	.025	.010	.015	.008	.003	
9.0	.128	.066	.024	.110	.057	.021	.076	.040	.015	.044	.024	.009	.014	.008	.003	
10.0	.122	.061	.021	.105	.053	.019	.073	.038	.013	.042	.022	.008	.014	.007	.003	

C Range: 0 - 360DEG
 C Interval: 15.0DEG
 Test Speed: HIGH
 Temperature:25.3DEG
 Operators:
 Test Date:2014-10-31

γ Range: 0 - 90DEG
 γ Interval: 0.5DEG
 Test System:EVERFINE GO-2000B_V1 SYSTEM V2.0.279
 Humidity:65.0%
 Test Distance:8.000m [K=1.0000]
 Remarks: 2

UGR(Unified Glare Rating) Table

Test:U:220.4V I:0.3810A P:80.70W PF:0.9590 Lamp Flux:8130.46x1 lm										
NAME: LED STREET LIGHT					TYPE:IP66			WEIGHT:2		
SPEC.:CREE XTE					DIM.:			SERIAL No.:		
MFR.: QINHAN LIGHTING					SUR.:			PROTECTION ANGLE:		
ceiling/cavity	0.7	0.7	0.5	0.5	0.3	0.7	0.7	0.5	0.5	0.3
walls	0.5	0.3	0.5	0.3	0.3	0.5	0.3	0.5	0.3	0.3
working plane	0.2	0.2	0.2	0.2	0.2	0.2	0.2	0.2	0.2	0.2
Room dimensions	Viewed crosswise					Viewed endwise				
x = 2H y = 2H	38.8	40.4	39.1	40.6	40.9	30.2	31.8	30.5	32.1	32.3
3H	41.7	43.2	42.0	43.4	43.7	30.4	31.9	30.7	32.2	32.4
4H	42.0	43.5	42.3	43.7	44.0	30.5	32.0	30.9	32.2	32.5
6H	42.0	43.4	42.3	43.6	43.9	30.7	32.1	31.0	32.3	32.6
8H	42.0	43.3	42.3	43.6	43.9	30.8	32.1	31.2	32.4	32.7
12H	41.9	43.2	42.3	43.5	43.8	30.9	32.2	31.3	32.5	32.8
4H 2H	38.6	40.1	39.0	40.4	40.6	32.0	33.5	32.4	33.7	34.0
3H	41.6	42.9	41.9	43.2	43.5	32.1	33.4	32.5	33.7	34.0
4H	42.0	43.1	42.4	43.5	43.8	32.3	33.4	32.6	33.7	34.1
6H	42.0	43.0	42.4	43.4	43.8	32.4	33.5	32.8	33.8	34.2
8H	42.0	43.0	42.4	43.3	43.7	32.6	33.5	33.0	33.9	34.3
12H	42.0	42.9	42.4	43.3	43.7	32.7	33.6	33.1	34.0	34.4
8H 4H	41.8	42.8	42.3	43.2	43.6	32.6	33.6	33.1	34.0	34.4
6H	41.9	42.7	42.3	43.1	43.5	32.9	33.7	33.3	34.1	34.5
8H	41.9	42.6	42.4	43.0	43.5	33.1	33.8	33.5	34.2	34.7
12H	41.9	42.5	42.4	43.0	43.5	33.3	33.9	33.8	34.4	34.9
12H 4H	41.8	42.7	42.2	43.1	43.5	32.6	33.5	33.1	33.9	34.3
6H	41.9	42.6	42.3	43.0	43.5	32.9	33.6	33.4	34.0	34.5
8H	41.9	42.5	42.4	42.9	43.4	33.1	33.7	33.6	34.2	34.7
Variations with the observer position at spacings:										
S = 1.0H	+ 0.4 / - 0.5					+ 1.5 / - 2.3				
1.5H	+ 1.0 / - 1.1					+ 1.3 / - 1.8				
2.0H	+ 1.0 / - 1.1					+ 2.5 / - 3.0				

CIE Pub.117 Corrected 8130 lm Total Lamp Luminous Flux.(8log(F/F0) = 7.3)

C Range: 0 - 360DEG
 C Interval: 15.0DEG
 Test Speed: HIGH
 Temperature:25.3DEG
 Operators:
 Test Date:2014-10-31

γ Range: 0 - 90DEG
 γ Interval: 0.5DEG
 Test System:EVERFINE GO-2000B_V1 SYSTEM V2.0.279
 Humidity:65.0%
 Test Distance:8.000m [K=1.0000]
 Remarks: 2

UTILIZATION FACTORS TABLE

Test:U:220.4V I:0.3810A P:80.70W PF:0.9590 Lamp Flux:8130.46x1 lm		
NAME: LED STREET LIGHT	TYPE:IP66	WEIGHT:2
SPEC.:CREE XTE	DIM.:	SERIAL No.:
MFR.: QINHAN LIGHTING	SUR.:	PROTECTION ANGLE:

REFLECTANCE										
Ceiling	0.8	0.8	0.8	0.7	0.7	0.7	0.5	0.5	0.5	0
Walls	0.7	0.5	0.3	0.7	0.5	0.3	0.7	0.5	0.3	0
Working plane	0.2	0.2	0.2	0.2	0.2	0.2	0.2	0.2	0.2	0
ROOM INDEX	UTILIZATION FACTORS(PERCENT) $k(RI) \times RCR = 5$									
k = 0.60	51	38	31	50	38	31	49	38	30	23
0.80	62	49	41	61	48	40	59	47	40	32
1.00	71	59	50	70	58	50	67	60	50	42
1.25	79	67	59	77	66	59	74	65	58	50
1.50	84	73	65	82	72	65	79	70	64	56
2.00	92	83	75	90	81	75	86	79	73	65
2.50	97	88	81	94	87	80	90	84	78	70
3.00	100	93	87	98	91	86	94	88	83	75
4.00	105	99	94	102	97	92	98	93	90	80
5.00	108	102	98	105	100	96	101	97	93	84
ROOM INDEX	UF(total)									Direct
According to DIN EN 13032-2 2004			Suspended				SHRNOM = 1.25			

C Range: 0 - 360DEG
 C Interval: 15.0DEG
 Test Speed: HIGH
 Temperature:25.3DEG
 Operators:
 Test Date:2014-10-31

γ Range: 0 - 90DEG
 γ Interval: 0.5DEG
 Test System:EVERFINE GO-2000B_V1 SYSTEM V2.0.279
 Humidity:65.0%
 Test Distance:8.000m [K=1.0000]
 Remarks: 2

ISOCANDELA DIAGRAM

Test:U:220.4V I:0.3810A P:80.70W PF:0.9590 Lamp Flux:8130.46x1 lm		
NAME: LED STREET LIGHT	TYPE:IP66	WEIGHT:2
SPEC.:CREE XTE	DIM.:	SERIAL No.:
MFR.: QINHAN LIGHTING	SUR.:	PROTECTION ANGLE:

Conical surface Flux(90deg):

3552.9 lm

%lum = 43.7%

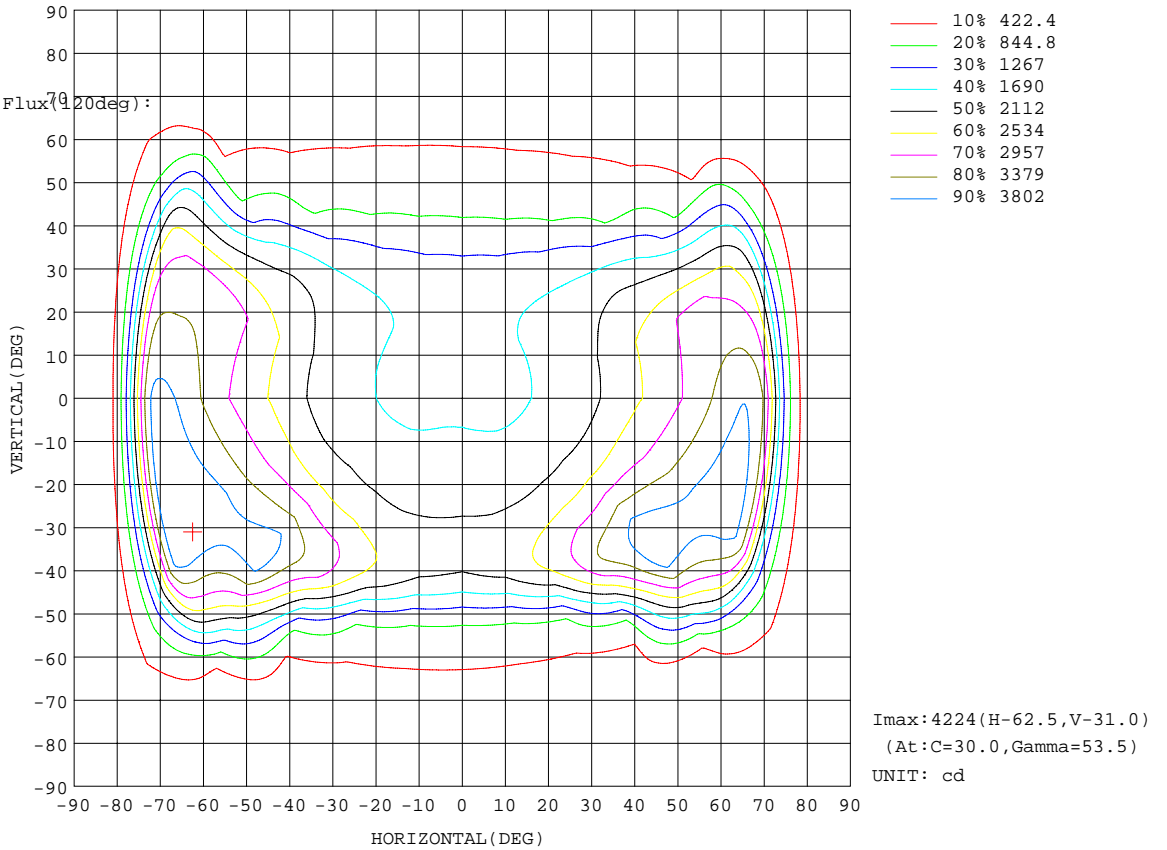
%lamp = 43.7%

Conical surface Flux(70deg):

6003 lm

%lum = 73.8%

%lamp = 73.8%

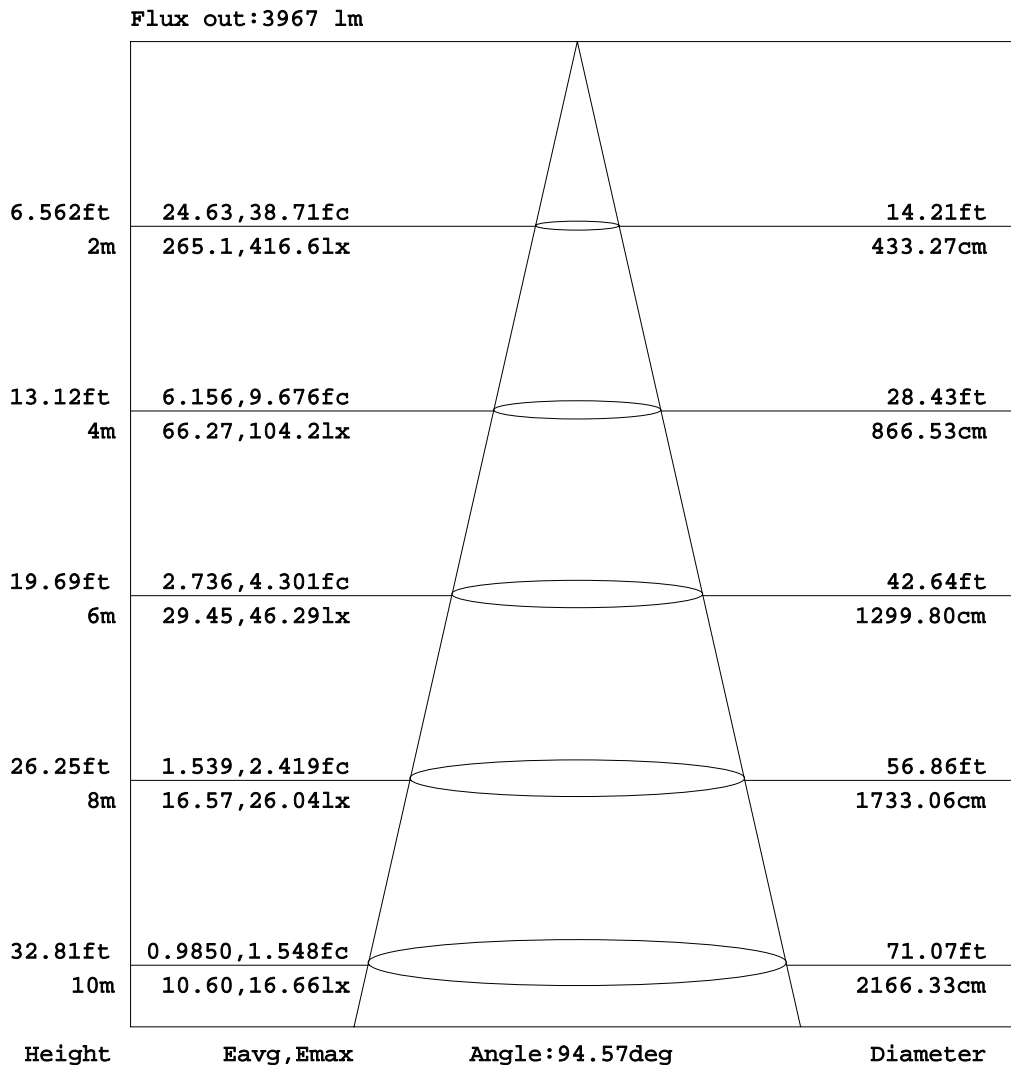


C Range: 0 - 360DEG
 C Interval: 15.0DEG
 Test Speed: HIGH
 Temperature: 25.3DEG
 Operators:
 Test Date: 2014-10-31

γ Range: 0 - 90DEG
 γ Interval: 0.5DEG
 Test System: EVERFINE GO-2000B_V1 SYSTEM V2.0.279
 Humidity: 65.0%
 Test Distance: 8.000m [K=1.0000]
 Remarks: 2

AAI Figure

Test:U:220.4V I:0.3810A P:80.70W PF:0.9590 Lamp Flux:8130.46x1 lm		
NAME: LED STREET LIGHT	TYPE:IP66	WEIGHT:2
SPEC.:CREE XTE	DIM.:	SERIAL No.:
MFR.: QINHAN LIGHTING	SUR.:	PROTECTION ANGLE:



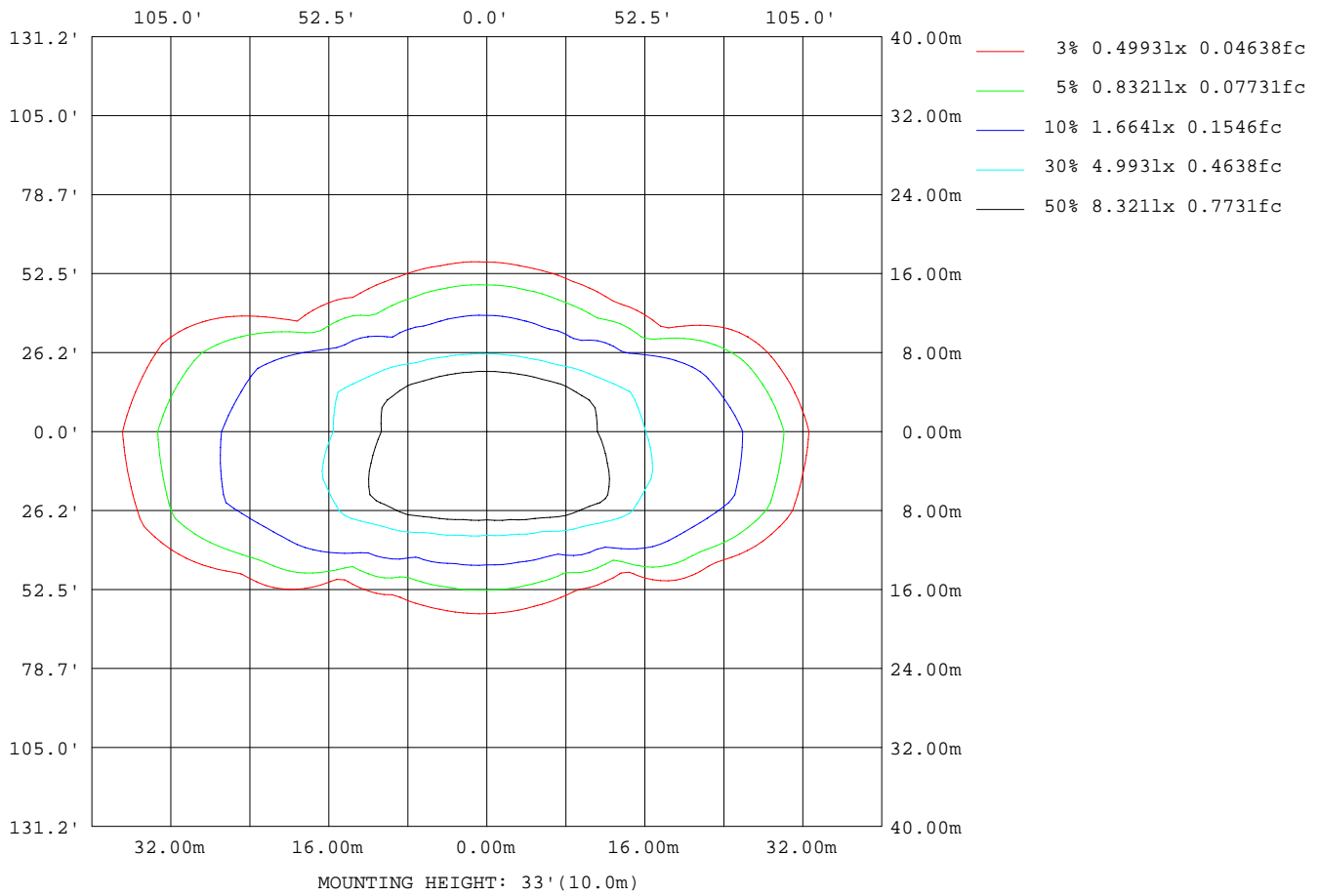
Note:The Curves indicate the illuminated area and the average illumination when the luminaire is at different distance.

C Range: 0 - 360DEG
 C Interval: 15.0DEG
 Test Speed: HIGH
 Temperature:25.3DEG
 Operators:
 Test Date:2014-10-31

γ Range: 0 - 90DEG
 γ Interval: 0.5DEG
 Test System:EVERFINE GO-2000B_V1 SYSTEM V2.0.279
 Humidity:65.0%
 Test Distance:8.000m [K=1.0000]
 Remarks: 2

ISOLUX DIAGRAM

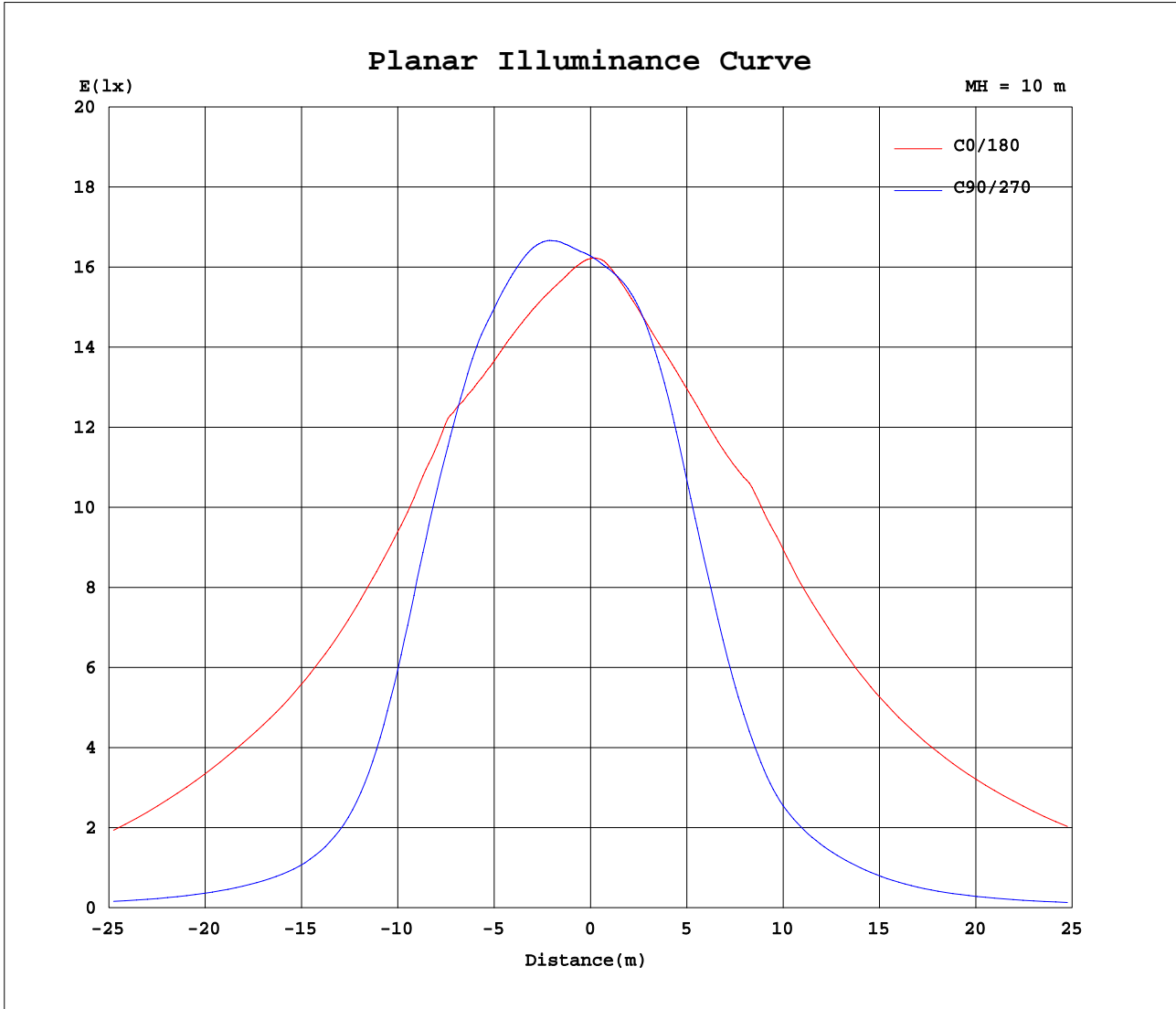
Test:U:220.4V I:0.3810A P:80.70W PF:0.9590 Lamp Flux:8130.46x1 lm		
NAME: LED STREET LIGHT	TYPE:IP66	WEIGHT:2
SPEC.:CREE XTE	DIM.:	SERIAL No.:
MFR.: QINHAN LIGHTING	SUR.:	PROTECTION ANGLE:



C Range: 0 - 360DEG
 C Interval: 15.0DEG
 Test Speed: HIGH
 Temperature:25.3DEG
 Operators:
 Test Date:2014-10-31

γ Range: 0 - 90DEG
 γ Interval: 0.5DEG
 Test System:EVERFINE GO-2000B_V1 SYSTEM V2.0.279
 Humidity:65.0%
 Test Distance:8.000m [K=1.0000]
 Remarks: 2

Planar Illuminance Curve



C Range: 0 - 360DEG
 C Interval: 15.0DEG
 Test Speed: HIGH
 Temperature: 25.3DEG
 Operators:
 Test Date: 2014-10-31

γ Range: 0 - 90DEG
 γ Interval: 0.5DEG
 Test System: EVERFINE GO-2000B_V1 SYSTEM V2.0.279
 Humidity: 65.0%
 Test Distance: 8.000m [K=1.0000]
 Remarks: 2

LUMINOUS DISTRIBUTION INTENSITY DATA

Test:U:220.4V I:0.3810A P:80.70W PF:0.9590 Lamp Flux:8130.46x1 lm		
NAME: LED STREET LIGHT	TYPE:IP66	WEIGHT:2
SPEC.:CREE XTE	DIM.:	SERIAL No.:
MFR.: QINHAN LIGHTING	SUR.:	PROTECTION ANGLE:

Table--1 UNIT: cd

C(DEG) γ (DEG)	0	15	30	45	60	75	90	105	120	135	150	165	180	195	210	225	240	255	270
0	1626	1626	1626	1626	1626	1626	1626	1626	1626	1626	1626	1626	1626	1626	1626	1626	1626	1626	1626
5	1620	1626	1633	1642	1652	1659	1665	1664	1660	1651	1642	1634	1631	1626	1623	1621	1619	1617	1615
10	1634	1647	1663	1682	1706	1728	1742	1738	1717	1685	1656	1638	1627	1620	1619	1624	1628	1632	1629
15	1682	1704	1734	1758	1787	1817	1838	1831	1794	1744	1700	1666	1646	1634	1634	1640	1642	1644	1642
20	1761	1794	1848	1883	1895	1918	1941	1927	1882	1837	1783	1726	1696	1682	1678	1670	1648	1627	1620
25	1872	1928	2018	2046	2037	2034	2053	2027	1987	1968	1915	1828	1783	1770	1751	1707	1630	1557	1534
30	2034	2141	2265	2271	2245	2190	2182	2155	2134	2139	2108	1976	1904	1896	1858	1731	1554	1424	1381
35	2273	2431	2586	2622	2476	2292	2229	2249	2337	2391	2359	2191	2073	2079	1987	1697	1421	1232	1172
40	2476	2739	3061	2995	2630	2259	2123	2222	2491	2722	2712	2485	2342	2335	2090	1593	1202	998	935
45	2666	3043	3638	3322	2431	1846	1678	1873	2414	3064	3242	2824	2539	2577	2142	1372	941	765	720
50	2913	3377	4096	3125	1670	1176	1085	1232	1797	3079	3744	3185	2760	2849	2038	1051	693	627	603
55	3200	3728	4201	2120	852	710	695	749	996	2331	4016	3583	3018	3105	1745	701	571	524	498
60	3549	4026	3556	945	523	498	503	523	584	1291	3719	3983	3343	3236	1249	565	463	407	385
65	3801	4080	2350	438	347	355	370	383	405	567	2742	4196	3722	3149	777	430	335	306	297
70	3317	3176	965	263	238	262	276	283	284	328	1612	4154	3932	2853	496	285	237	234	226
75	1166	1065	238	170	173	198	196	211	204	215	488	2389	2710	1729	258	191	173	176	158
80	280	368	139	117	139	153	161	157	154	145	182	646	604	565	148	128	137	145	141
85	106	167	93.0	84.8	93.2	120	93.4	121	112	101	118	298	170	280	109	85.0	93.0	118	93.9
90	37.0	45.4	41.5	38.3	41.5	55.3	29.9	74.3	69.5	63.7	70.8	97.5	62.3	94.5	66.0	60.0	72.8	110	59.0

C Range: 0 - 360DEG
 C Interval: 15.0DEG
 Test Speed: HIGH
 Temperature:25.3DEG
 Operators:
 Test Date:2014-10-31

γ Range: 0 - 90DEG
 γ Interval: 0.5DEG
 Test System:EVERFINE GO-2000B_V1 SYSTEM V2.0.279
 Humidity:65.0%
 Test Distance:8.000m [K=1.0000]
 Remarks: 2

LUMINOUS DISTRIBUTION INTENSITY DATA

Test:U:220.4V I:0.3810A P:80.70W PF:0.9590 Lamp Flux:8130.46x1 lm		
NAME: LED STREET LIGHT	TYPE:IP66	WEIGHT:2
SPEC.:CREE XTE	DIM.:	SERIAL No.:
MFR.: QINHAN LIGHTING	SUR.:	PROTECTION ANGLE:

Table--2

UNIT: cd

C(DEC) γ (DEC)	285	300	315	330	345														
0	1626	1626	1626	1626	1626														
5	1614	1612	1613	1613	1615														
10	1628	1624	1623	1621	1626														
15	1642	1645	1655	1660	1667														
20	1629	1658	1699	1726	1744														
25	1558	1639	1743	1816	1851														
30	1416	1549	1748	1933	2004														
35	1215	1395	1690	2043	2216														
40	971	1149	1536	2104	2449														
45	732	858	1256	2062	2671														
50	607	643	881	1835	2891														
55	504	540	629	1411	2999														
60	382	416	507	912	2934														
65	288	290	344	565	2668														
70	224	211	225	312	1938														
75	165	153	151	172	689														
80	135	118	106	119	261														
85	112	103	87.4	90.8	132														
90	63.3	39.1	32.9	43.3	44.8														

C Range: 0 - 360DEG
 C Interval: 15.0DEG
 Test Speed: HIGH
 Temperature:25.3DEG
 Operators:
 Test Date:2014-10-31

γ Range: 0 - 90DEG
 γ Interval: 0.5DEG
 Test System:EVERFINE GO-2000B_V1 SYSTEM V2.0.279
 Humidity:65.0%
 Test Distance:8.000m [K=1.0000]
 Remarks: 2