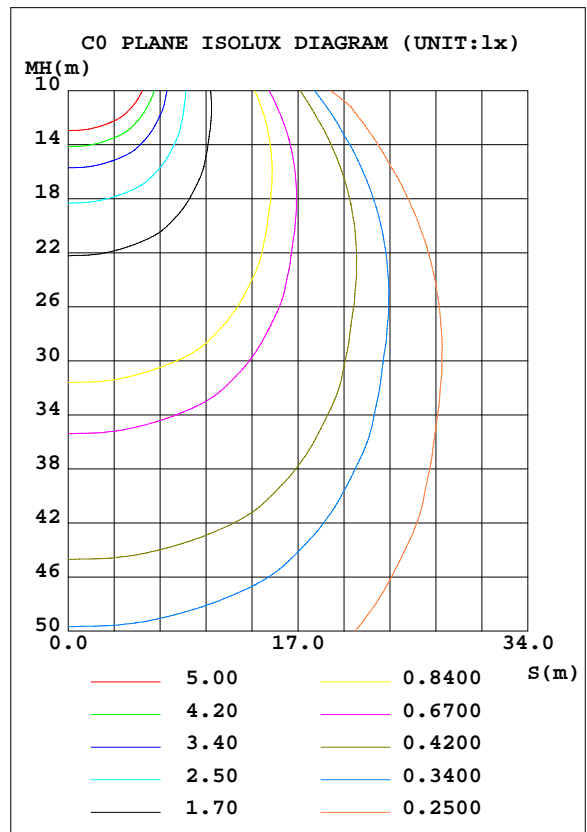
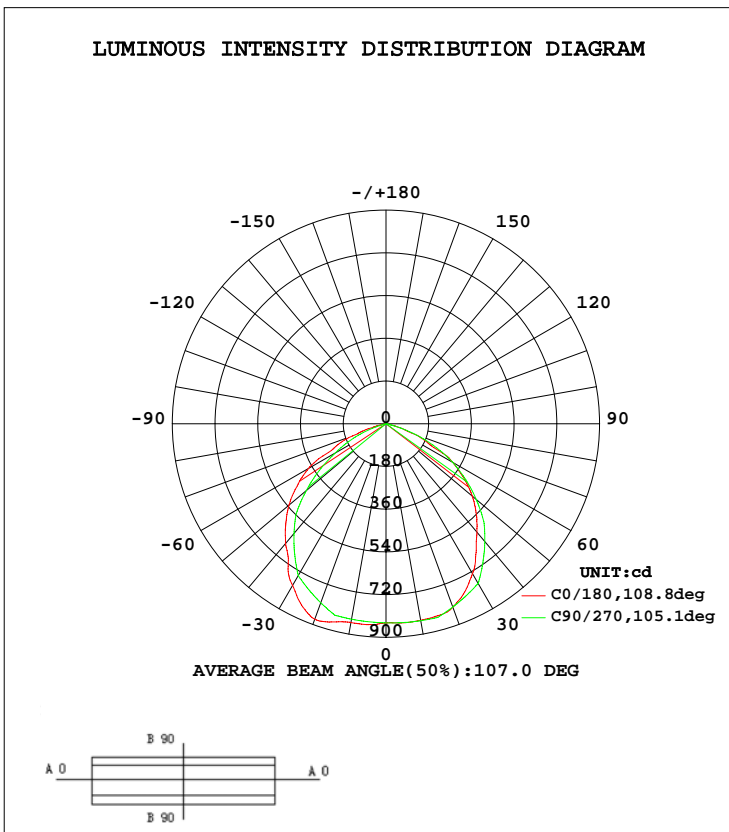


LUMINAIRE PHOTOMETRIC TEST REPORT

Test:U:220.2V I:0.1020A P:20.60W PF:0.9120 Lamp Flux:2246.47x1 lm		
NAME: LED FLOOD LIGHT	TYPE:IP65	WEIGHT:1
SPEC.:PHILIPS 3030	DIM.:	SERIAL No.:
MFR.: QINHAN LIGHTING	SUR.:	PROTECTION ANGLE:

DATA OF LAMP		PHOTOMETRIC DATA Eff: 109.05 lm/W			
MODEL	QH-FLTG-20W	I <sub>max</sub> (cd)	880.9	S/MH(C0/180)	1.35
NOMINAL POWER(W)	20	LOR(%)	100.0	S/MH(C90/270)	1.28
RATED VOLTAGE(V)	220	TOTAL FLUX(lm)	2246.5	η UP, DN(C0-180)	0.0, 51.5
NOMINAL FLUX(lm)	2246.47	CIE CLASS	DIRECT	η UP, DN(C180-360)	0.0, 48.5
LAMPS INSIDE	1	η up(%)	0.0	CIBSE SHR NOM	1.50
TEST VOLTAGE(V)	220.2	η down(%)	100.0	CIBSE SHR MAX	1.50



C Range: 0 - 360DEG  
 C Interval: 5.0DEG  
 Test Speed: HIGH  
 Temperature:25.3DEG  
 Operators:  
 Test Date:2016-01-15

γ Range: 0 - 90DEG  
 γ Interval: 0.5DEG  
 Test System:EVERFINE GO-2000B\_V1 SYSTEM V2.0.287  
 Humidity:65.0%  
 Test Distance:8.000m [K=1.0000]  
 Remarks:

ZONAL FLUX DIAGRAM

ZONAL FLUX DIAGRAM:

γ	C0	C45	C90	C135	C180	C225	C270	C315	γ	Φ zone	Φ total	lum, lamp
5	841.6	842.1	840.9	848.8	849.7	846.1	837.6	839.3	0- 5	20.12	20.12	0.90,0.90
10	841.0	843.9	842.7	852.7	850.7	845.1	836.2	838.0	5- 10	60.38	80.50	3.58,3.58
15	838.2	842.4	844.6	856.1	864.7	846.9	834.8	834.7	10- 15	100.2	180.7	8.04,8.04
20	822.8	839.9	822.0	866.5	876.6	855.5	802.9	828.7	15- 20	138.9	319.7	14.2,14.2
25	783.2	817.6	799.5	861.5	842.6	841.3	771.0	801.2	20- 25	173.5	493.1	22,22
30	729.3	780.3	776.9	833.8	787.1	805.6	739.1	758.0	25- 30	201.5	694.6	30.9,30.9
35	661.9	733.7	712.3	784.1	718.3	752.3	671.0	706.1	30- 35	220.9	915.5	40.8,40.8
40	596.1	677.6	647.7	722.8	657.9	688.5	603.0	642.4	35- 40	228.9	1144	50.9,50.9
45	538.2	597.4	583.2	645.2	597.5	605.1	535.0	558.6	40- 45	228.6	1373	61.1,61.1
50	474.9	507.8	496.6	554.0	533.6	515.0	438.9	476.2	45- 50	219.7	1593	70.9,70.9
55	401.6	428.0	410.0	473.1	456.7	433.2	342.9	393.5	50- 55	200.5	1793	79.8,79.8
60	324.5	333.8	323.4	370.3	377.4	328.4	246.9	296.2	55- 60	172.3	1965	87.5,87.5
65	200.0	239.8	227.3	267.5	241.1	224.2	166.1	200.5	60- 65	134.0	2099	93.5,93.5
70	113.6	151.7	131.2	171.4	150.5	133.6	85.27	117.6	65- 70	89.07	2189	97.4,97.4
75	43.58	72.74	35.11	81.03	54.13	56.78	4.470	49.10	70- 75	45.15	2234	99.4,99.4
80	2.836	6.800	0	8.365	3.312	1.776	0	1.718	75- 80	11.75	2245	100,100
85	1.287	0	0	0	1.451	0	0	0	80- 85	0.9277	2246	100,100
90	0.2447	0	0	0	0.3261	0	0	0	85- 90	0.0730	2246	100,100
95									90- 95			
100									95-100			
105									100-105			
110									105-110			
115									110-115			
120									115-120			
125									120-125			
130									125-130			
135									130-135			
140									135-140			
145									140-145			
150									145-150			
155									150-155			
160									155-160			
165									160-165			
170									165-170			
175									170-175			
180									175-180			
DEG	LUMINOUS INTENSITY:cd								UNIT:lm			

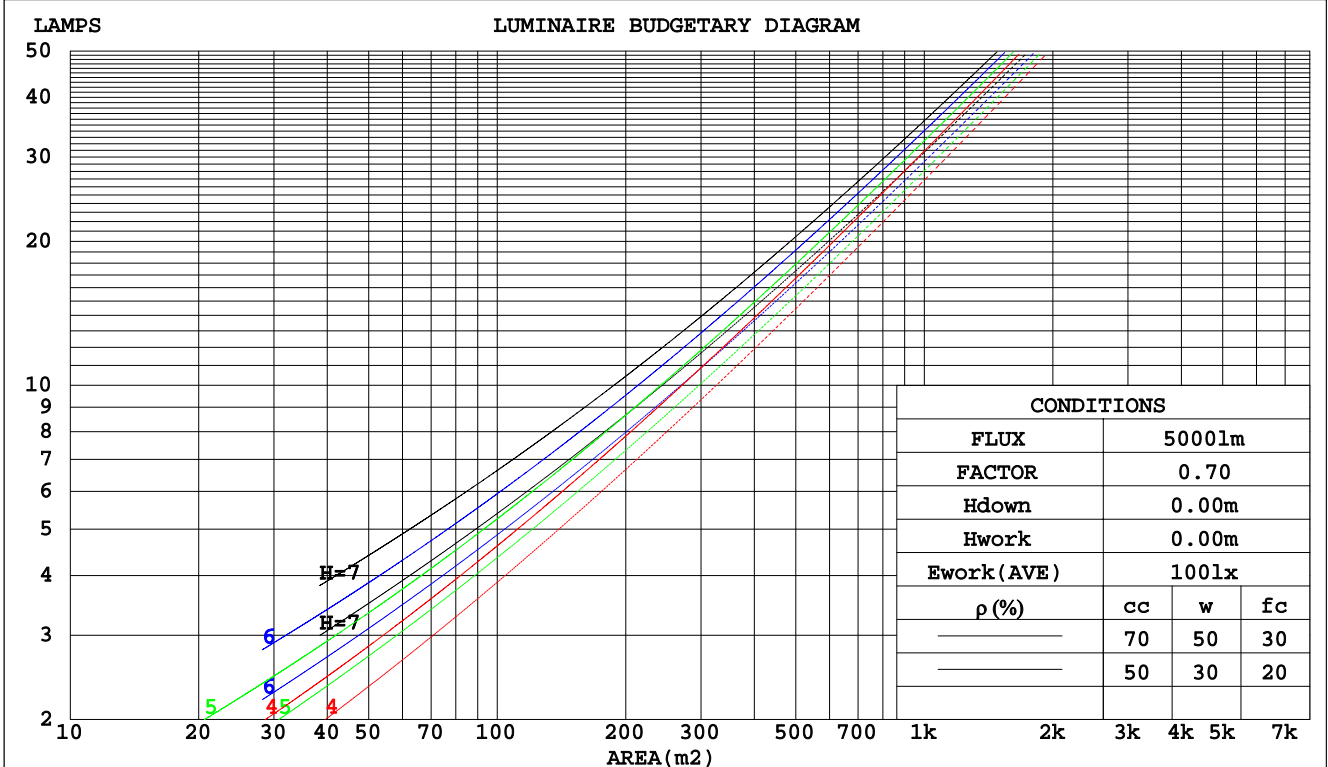
C Range: 0 - 360DEG  
 C Interval: 5.0DEG  
 Test Speed: HIGH  
 Temperature:25.3DEG  
 Operators:  
 Test Date:2016-01-15

γ Range: 0 - 90DEG  
 γ Interval: 0.5DEG  
 Test System:EVERFINE GO-2000B\_V1 SYSTEM V2.0.287  
 Humidity:65.0%  
 Test Distance:8.000m [K=1.0000]  
 Remarks:

CU AND LUMINAIRE BUDGETARY ESTIMATE DIAGRAM

Test:U:220.2V I:0.1020A P:20.60W PF:0.9120 Lamp Flux:2246.47x1 lm		
NAME: LED FLOOD LIGHT	TYPE:IP65	WEIGHT:1
SPEC.:PHILIPS 3030	DIM.:	SERIAL No.:
MFR.: QINHAN LIGHTING	SUR.:	PROTECTION ANGLE:

pcc	80%			70%			50%			30%			10%			0
pw	50%	30%	10%	50%	30%	10%	50%	30%	10%	50%	30%	10%	50%	30%	10%	0
pfc	20%			20%			20%			20%			20%			0
RCR	RCR:Room Cavity Ratio						Coefficients of Utilization(CU)									
0.0	1.19	1.19	1.19	1.16	1.16	1.16	1.11	1.11	1.11	1.06	1.06	1.06	1.02	1.02	1.02	.00
1.0	1.06	1.03	.99	1.04	1.01	.98	.90	.97	.95	.96	.94	.92	.93	.91	.89	.87
2.0	.94	.88	.83	.92	.87	.82	.89	.84	.80	.86	.82	.78	.83	.79	.77	.74
3.0	.83	.76	.70	.82	.75	.69	.79	.73	.68	.76	.71	.67	.74	.69	.66	.64
4.0	.74	.66	.60	.73	.65	.59	.70	.64	.59	.68	.62	.58	.66	.61	.57	.55
5.0	.67	.58	.52	.65	.57	.52	.63	.56	.51	.61	.55	.50	.60	.54	.50	.48
6.0	.60	.52	.45	.59	.51	.45	.57	.50	.45	.56	.49	.44	.54	.48	.44	.42
7.0	.54	.46	.40	.54	.46	.40	.52	.45	.40	.51	.44	.39	.49	.44	.39	.37
8.0	.50	.42	.36	.49	.41	.36	.48	.41	.36	.47	.40	.35	.45	.40	.35	.33
9.0	.46	.38	.32	.45	.37	.32	.44	.37	.32	.43	.36	.32	.42	.36	.32	.30
10.0	.42	.34	.29	.42	.34	.29	.41	.34	.29	.40	.33	.29	.39	.33	.29	.27



C Range: 0 - 360DEG  
 C Interval: 5.0DEG  
 Test Speed: HIGH  
 Temperature:25.3DEG  
 Operators:  
 Test Date:2016-01-15

γ Range: 0 - 90DEG  
 γ Interval: 0.5DEG  
 Test System:EVERFINE GO-2000B\_V1 SYSTEM V2.0.287  
 Humidity:65.0%  
 Test Distance:8.000m [K=1.0000]  
 Remarks:

WEC AND CCEC

Test:U:220.2V I:0.1020A P:20.60W PF:0.9120 Lamp Flux:2246.47x1 lm		
NAME: LED FLOOD LIGHT	TYPE:IP65	WEIGHT:1
SPEC.:PHILIPS 3030	DIM.:	SERIAL No.:
MFR.: QINHAN LIGHTING	SUR.:	PROTECTION ANGLE:

ρcc	80%			70%			50%			30%			10%			0
ρw	50%	30%	10%	50%	30%	10%	50%	30%	10%	50%	30%	10%	50%	30%	10%	0
ρfc	20%			20%			20%			20%			20%			0
RCR	RCR:Room Cavity Ratio						Wall Exitance Coefficients(WEC)									
0.0																
1.0	.262	.149	.047	.255	.145	.046	.242	.139	.044	.230	.133	.043	.219	.127	.041	
2.0	.257	.141	.043	.251	.138	.043	.240	.133	.041	.229	.129	.040	.220	.124	.039	
3.0	.245	.130	.039	.239	.128	.039	.229	.124	.038	.220	.121	.037	.211	.117	.036	
4.0	.230	.120	.035	.225	.118	.035	.216	.115	.034	.208	.112	.034	.201	.109	.033	
5.0	.216	.110	.032	.212	.109	.032	.204	.106	.031	.196	.104	.031	.189	.101	.030	
6.0	.202	.101	.029	.198	.100	.029	.191	.098	.029	.185	.096	.028	.179	.094	.028	
7.0	.190	.094	.027	.186	.093	.026	.180	.091	.026	.174	.089	.026	.169	.088	.026	
8.0	.178	.087	.024	.175	.086	.024	.170	.085	.024	.164	.083	.024	.159	.082	.024	
9.0	.168	.081	.023	.165	.081	.023	.160	.079	.022	.155	.078	.022	.151	.077	.022	
10.0	.159	.076	.021	.156	.075	.021	.152	.074	.021	.147	.073	.021	.143	.072	.021	

ρcc	80%			70%			50%			30%			10%			0
ρw	50%	30%	10%	50%	30%	10%	50%	30%	10%	50%	30%	10%	50%	30%	10%	0
ρfc	20%			20%			20%			20%			20%			0
RCR	RCR:Room Cavity Ratio						Ceiling Cavity Exitance Coefficients(CCEC)									
0.0	.190	.190	.190	.163	.163	.163	.111	.111	.111	.064	.064	.064	.020	.020	.020	
1.0	.177	.157	.138	.151	.134	.119	.104	.092	.082	.060	.053	.048	.019	.017	.015	
2.0	.168	.132	.102	.144	.114	.088	.098	.079	.062	.057	.046	.036	.018	.015	.012	
3.0	.160	.114	.078	.137	.098	.068	.094	.068	.047	.054	.040	.028	.017	.013	.009	
4.0	.152	.101	.061	.131	.087	.053	.090	.061	.037	.052	.035	.022	.017	.012	.007	
5.0	.145	.090	.049	.125	.078	.043	.086	.054	.030	.050	.032	.018	.016	.010	.006	
6.0	.138	.082	.041	.119	.071	.036	.082	.049	.025	.048	.029	.015	.015	.010	.005	
7.0	.132	.075	.034	.114	.065	.030	.078	.045	.021	.046	.027	.013	.015	.009	.004	
8.0	.126	.069	.030	.108	.060	.026	.075	.042	.018	.044	.025	.011	.014	.008	.004	
9.0	.120	.064	.026	.104	.055	.023	.072	.039	.016	.042	.023	.010	.014	.008	.003	
10.0	.115	.060	.023	.099	.052	.020	.069	.036	.014	.040	.022	.008	.013	.007	.003	

C Range: 0 - 360DEG  
 C Interval: 5.0DEG  
 Test Speed: HIGH  
 Temperature:25.3DEG  
 Operators:  
 Test Date:2016-01-15

γ Range: 0 - 90DEG  
 γ Interval: 0.5DEG  
 Test System:EVERFINE GO-2000B\_V1 SYSTEM V2.0.287  
 Humidity:65.0%  
 Test Distance:8.000m [K=1.0000]  
 Remarks:

UGR(Unified Glare Rating) Table

Test:U:220.2V I:0.1020A P:20.60W PF:0.9120 Lamp Flux:2246.47x1 lm										
NAME: LED FLOOD LIGHT					TYPE:IP65			WEIGHT:1		
SPEC.:PHILIPS 3030					DIM.:			SERIAL No.:		
MFR.: QINHAN LIGHTING					SUR.:			PROTECTION ANGLE:		
ceiling/cavity	0.7	0.7	0.5	0.5	0.3	0.7	0.7	0.5	0.5	0.3
walls	0.5	0.3	0.5	0.3	0.3	0.5	0.3	0.5	0.3	0.3
working plane	0.2	0.2	0.2	0.2	0.2	0.2	0.2	0.2	0.2	0.2
Room dimensions	Viewed crosswise					Viewed endwise				
x = 2H y = 2H	19.7	21.1	20.0	21.3	21.5	19.7	21.2	20.0	21.4	21.6
3H	20.4	21.7	20.6	21.9	22.1	20.5	21.8	20.8	22.0	22.2
4H	20.4	21.6	20.7	21.9	22.1	20.5	21.7	20.8	22.0	22.2
6H	20.3	21.5	20.6	21.7	22.0	20.4	21.6	20.7	21.8	22.1
8H	20.3	21.4	20.6	21.6	21.9	20.4	21.5	20.7	21.8	22.0
12H	20.2	21.3	20.5	21.6	21.9	20.3	21.4	20.6	21.7	22.0
4H 2H	20.2	21.4	20.5	21.7	21.9	20.2	21.4	20.5	21.7	21.9
3H	20.9	22.0	21.3	22.3	22.6	21.0	22.1	21.4	22.4	22.7
4H	21.0	21.9	21.3	22.3	22.6	21.1	22.1	21.5	22.4	22.7
6H	20.9	21.8	21.3	22.1	22.5	21.0	21.9	21.4	22.2	22.6
8H	20.9	21.7	21.3	22.0	22.4	21.0	21.8	21.4	22.1	22.5
12H	20.8	21.5	21.2	21.9	22.3	20.9	21.6	21.3	22.0	22.4
8H 4H	21.0	21.8	21.4	22.1	22.5	21.1	21.9	21.5	22.2	22.6
6H	20.9	21.6	21.4	22.0	22.4	21.0	21.7	21.4	22.1	22.5
8H	20.9	21.5	21.4	21.9	22.3	21.0	21.5	21.4	22.0	22.4
12H	20.9	21.3	21.3	21.8	22.3	20.9	21.4	21.4	21.9	22.3
12H 4H	20.9	21.7	21.4	22.0	22.4	21.0	21.8	21.5	22.1	22.5
6H	20.9	21.5	21.4	21.9	22.3	21.0	21.5	21.4	22.0	22.4
8H	20.9	21.3	21.3	21.8	22.3	20.9	21.4	21.4	21.9	22.3
Variations with the observer position at spacings:										
S = 1.0H	+ 0.4 / - 0.5					+ 0.4 / - 0.5				
1.5H	+ 0.5 / - 0.9					+ 0.3 / - 0.6				
2.0H	+ 0.5 / - 0.6					+ 0.6 / - 0.7				

CIE Pub.117 Corrected 2246 lm Total Lamp Luminous Flux.(8log(F/F0) = 2.8)

C Range: 0 - 360DEG  
 C Interval: 5.0DEG  
 Test Speed: HIGH  
 Temperature:25.3DEG  
 Operators:  
 Test Date:2016-01-15

γ Range: 0 - 90DEG  
 γ Interval: 0.5DEG  
 Test System:EVERFINE GO-2000B\_V1 SYSTEM V2.0.287  
 Humidity:65.0%  
 Test Distance:8.000m [K=1.0000]  
 Remarks:

UTILIZATION FACTORS TABLE

Test:U:220.2V I:0.1020A P:20.60W PF:0.9120 Lamp Flux:2246.47x1 lm		
NAME: LED FLOOD LIGHT	TYPE:IP65	WEIGHT:1
SPEC.:PHILIPS 3030	DIM.:	SERIAL No.:
MFR.: QINHAN LIGHTING	SUR.:	PROTECTION ANGLE:

REFLECTANCE										
Ceiling	0.8	0.8	0.8	0.7	0.7	0.7	0.5	0.5	0.5	0
Walls	0.7	0.5	0.3	0.7	0.5	0.3	0.7	0.5	0.3	0
Working plane	0.2	0.2	0.2	0.2	0.2	0.2	0.2	0.2	0.2	0
ROOM INDEX	UTILIZATION FACTORS(PERCENT) $k(RI) \times RCR = 5$									
k = 0.60	61	50	43	60	49	43	59	49	43	36
0.80	71	60	53	70	60	53	68	59	53	46
1.00	80	70	63	79	69	63	77	70	62	56
1.25	87	78	71	86	77	71	83	76	70	63
1.50	92	83	77	90	82	76	88	81	75	69
2.00	98	91	85	97	90	85	93	88	83	76
2.50	102	95	90	100	94	89	96	91	87	79
3.00	105	99	94	103	98	93	99	95	91	83
4.00	108	104	100	106	102	98	102	99	96	87
5.00	110	106	103	108	104	101	104	101	98	90
ROOM INDEX	UF(total)									Direct
According to DIN EN 13032-2 2004			Suspended				SHRNOM = 1.25			

C Range: 0 - 360DEG  
 C Interval: 5.0DEG  
 Test Speed: HIGH  
 Temperature:25.3DEG  
 Operators:  
 Test Date:2016-01-15

$\gamma$  Range: 0 - 90DEG  
 $\gamma$  Interval: 0.5DEG  
 Test System:EVERFINE GO-2000B\_V1 SYSTEM V2.0.287  
 Humidity:65.0%  
 Test Distance:8.000m [K=1.0000]  
 Remarks:

ISOCANDELA DIAGRAM

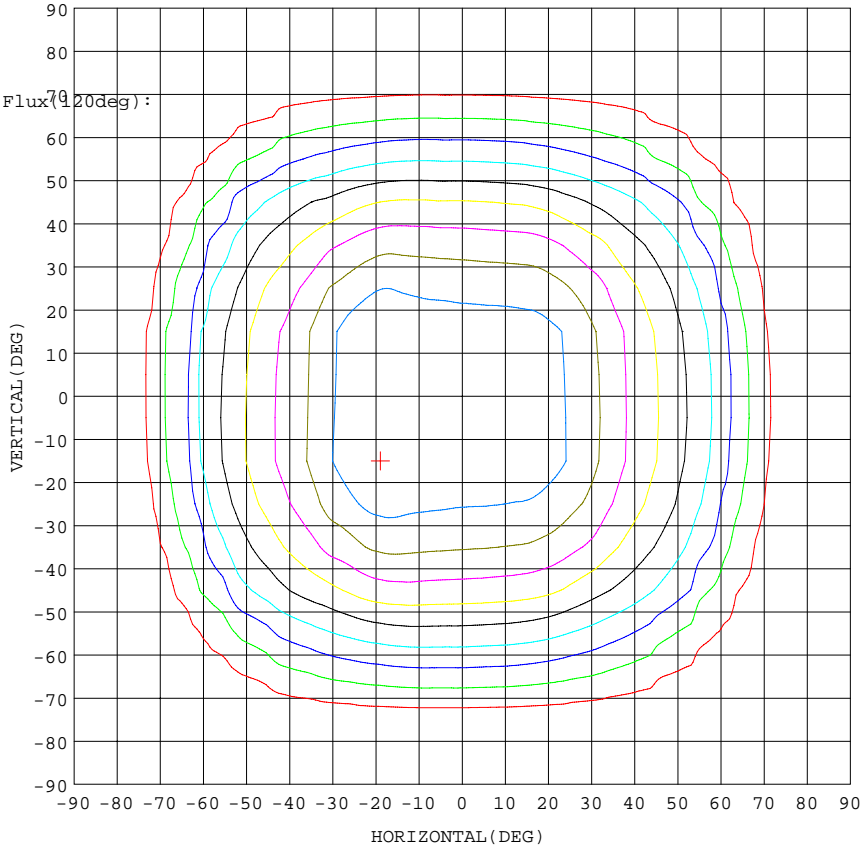
Test:U:220.2V I:0.1020A P:20.60W PF:0.9120 Lamp Flux:2246.47x1 lm		
NAME: LED FLOOD LIGHT	TYPE:IP65	WEIGHT:1
SPEC.:PHILIPS 3030	DIM.:	SERIAL No.:
MFR.: QINHAN LIGHTING	SUR.:	PROTECTION ANGLE:

Conical surface Flux(90deg):

1373 lm  
 %lum = 61.1%  
 %lamp = 61.1%

Conical surface Flux(70deg):

1965.5 lm  
 %lum = 87.5%  
 %lamp = 87.5%



- 10% 88.11
- 20% 176.2
- 30% 264.3
- 40% 352.4
- 50% 440.6
- 60% 528.7
- 70% 616.8
- 80% 704.9
- 90% 793.0

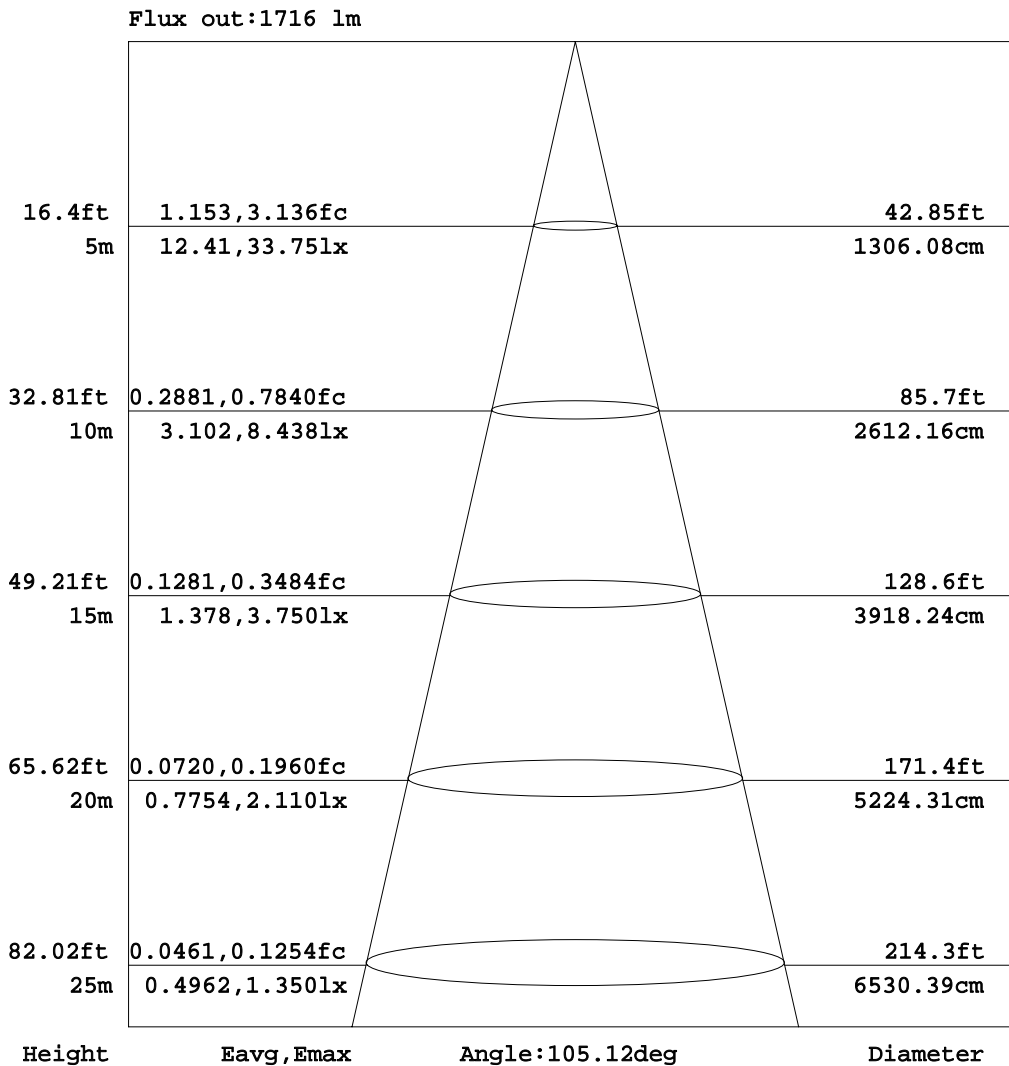
I<sub>max</sub>:881.1(H=-19.0,V=-15.0)  
 (At:C=145.0,Gamma=23.5)  
 UNIT: cd

C Range: 0 - 360DEG  
 C Interval: 5.0DEG  
 Test Speed: HIGH  
 Temperature:25.3DEG  
 Operators:  
 Test Date:2016-01-15

γ Range: 0 - 90DEG  
 γ Interval: 0.5DEG  
 Test System:EVERFINE GO-2000B\_V1 SYSTEM V2.0.287  
 Humidity:65.0%  
 Test Distance:8.000m [K=1.0000]  
 Remarks:

AAI Figure

Test:U:220.2V I:0.1020A P:20.60W PF:0.9120 Lamp Flux:2246.47x1 lm		
NAME: LED FLOOD LIGHT	TYPE:IP65	WEIGHT:1
SPEC.:PHILIPS 3030	DIM.:	SERIAL No.:
MFR.: QINHAN LIGHTING	SUR.:	PROTECTION ANGLE:



Note:The Curves indicate the illuminated area and the average illumination when the luminaire is at different distance.

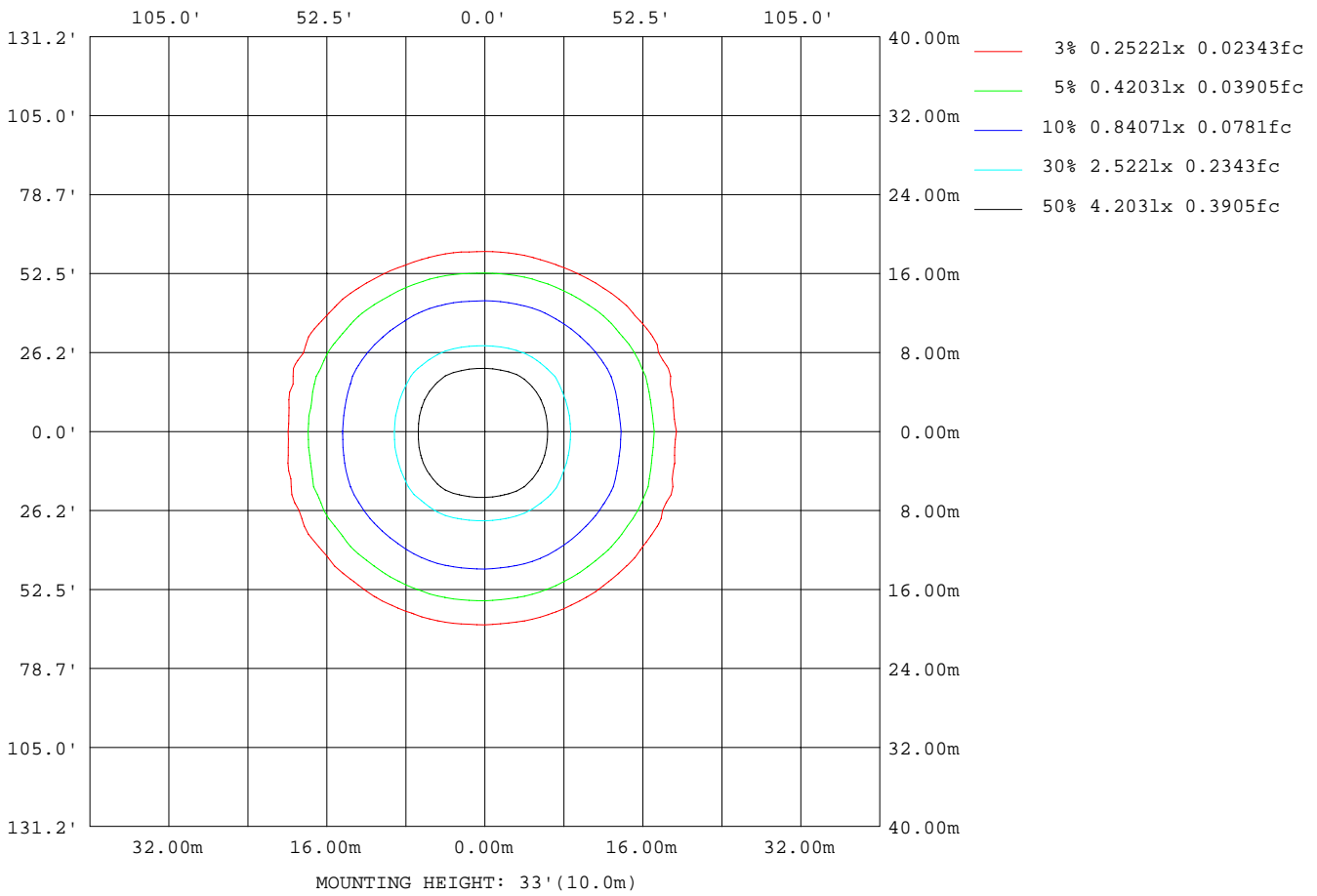
C Range: 0 - 360DEG  
 C Interval: 5.0DEG  
 Test Speed: HIGH  
 Temperature:25.3DEG  
 Operators:  
 Test Date:2016-01-15

γ Range: 0 - 90DEG  
 γ Interval: 0.5DEG  
 Test System:EVERFINE GO-2000B\_V1 SYSTEM V2.0.287  
 Humidity:65.0%  
 Test Distance:8.000m [K=1.0000]  
 Remarks:



ISOLUX DIAGRAM

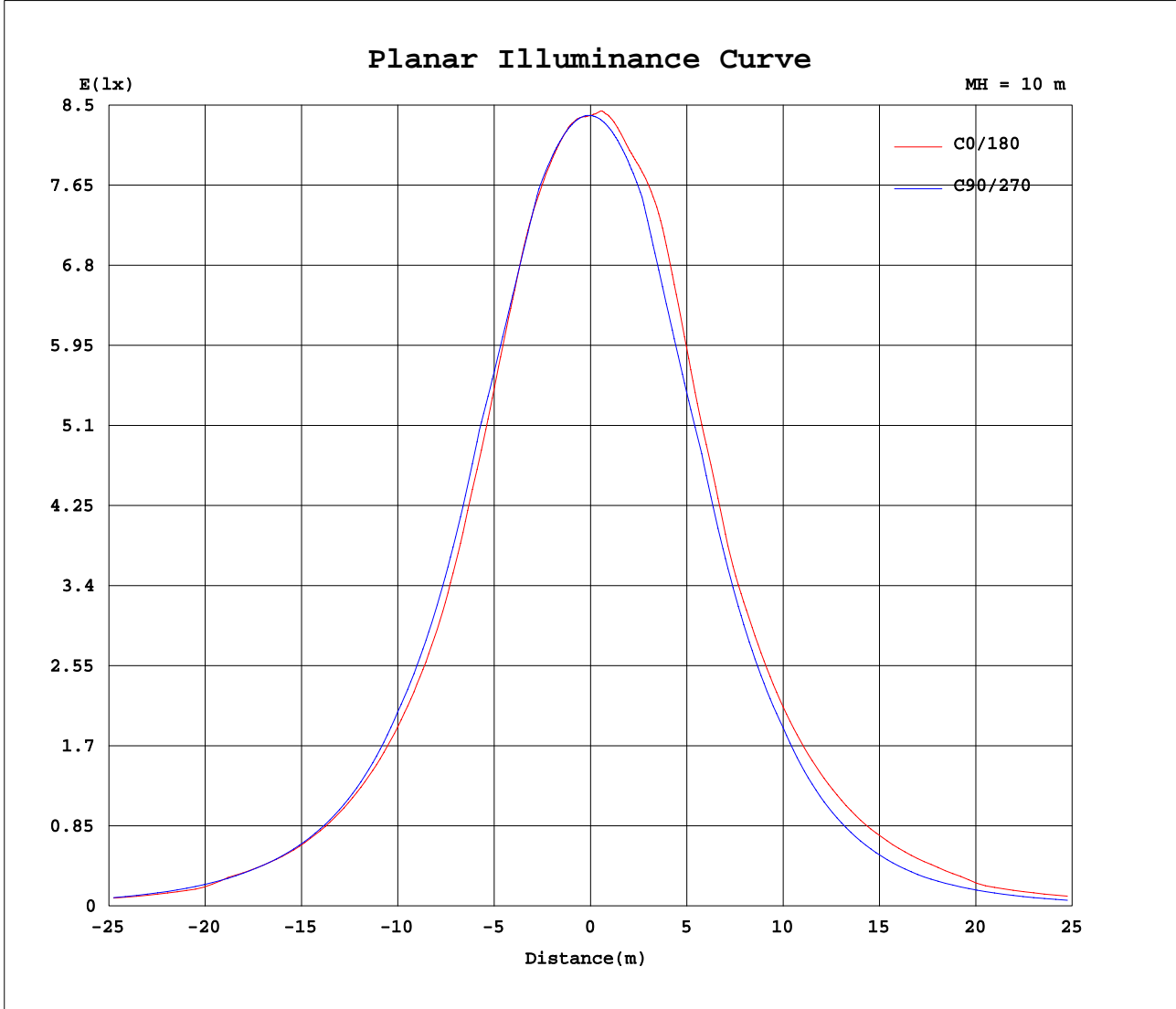
Test:U:220.2V I:0.1020A P:20.60W PF:0.9120 Lamp Flux:2246.47x1 lm		
NAME: LED FLOOD LIGHT	TYPE:IP65	WEIGHT:1
SPEC.:PHILIPS 3030	DIM.:	SERIAL No.:
MFR.: QINHAN LIGHTING	SUR.:	PROTECTION ANGLE:



C Range: 0 - 360DEG  
 C Interval: 5.0DEG  
 Test Speed: HIGH  
 Temperature:25.3DEG  
 Operators:  
 Test Date:2016-01-15

γ Range: 0 - 90DEG  
 γ Interval: 0.5DEG  
 Test System:EVERFINE GO-2000B\_V1 SYSTEM V2.0.287  
 Humidity:65.0%  
 Test Distance:8.000m [K=1.0000]  
 Remarks:

Planar Illuminance Curve



C Range: 0 - 360DEG  
 C Interval: 5.0DEG  
 Test Speed: HIGH  
 Temperature: 25.3DEG  
 Operators:  
 Test Date: 2016-01-15

γ Range: 0 - 90DEG  
 γ Interval: 0.5DEG  
 Test System: EVERFINE GO-2000B\_V1 SYSTEM V2.0.287  
 Humidity: 65.0%  
 Test Distance: 8.000m [K=1.0000]  
 Remarks:

LUMINOUS DISTRIBUTION INTENSITY DATA

Test:U:220.2V I:0.1020A P:20.60W PF:0.9120 Lamp Flux:2246.47x1 lm		
NAME: LED FLOOD LIGHT	TYPE:IP65	WEIGHT:1
SPEC.:PHILIPS 3030	DIM.:	SERIAL No.:
MFR.: QINHAN LIGHTING	SUR.:	PROTECTION ANGLE:

Table--1

UNIT: cd

C( DEG) γ (DEG)	0	5	10	15	20	25	30	35	40	45	50	55	60	65	70	75	80	85	90
0	839	839	839	839	839	839	839	839	839	839	839	839	839	839	839	839	839	839	839
5	842	842	842	842	842	842	842	842	842	842	842	842	841	841	841	841	841	841	841
10	841	841	841	842	842	842	843	843	843	844	844	845	844	844	844	844	843	843	843
15	838	838	838	839	839	839	840	841	841	842	843	844	845	846	846	846	846	845	845
20	823	823	825	827	830	833	836	838	839	840	838	834	831	829	827	825	823	822	822
25	783	784	787	792	799	806	813	821	819	818	814	810	806	803	802	800	800	799	799
30	729	730	734	741	750	762	770	774	778	780	782	783	781	778	775	775	775	775	777
35	662	662	667	676	691	704	712	718	724	734	743	748	742	733	723	717	714	711	712
40	596	597	602	611	622	628	639	658	676	678	675	674	670	665	658	652	648	647	648
45	538	538	543	554	557	564	575	590	593	597	592	594	597	595	591	587	583	583	583
50	475	474	481	488	493	502	512	507	506	508	510	513	516	514	509	503	498	496	497
55	402	400	409	413	424	434	428	427	428	428	422	420	420	420	417	414	410	408	410
60	324	322	328	334	346	343	344	347	340	334	329	328	326	326	325	324	322	321	323
65	200	200	202	214	240	222	253	240	242	240	237	238	235	233	232	230	228	226	227
70	114	121	118	130	141	135	128	138	128	152	149	148	144	142	138	135	133	131	131
75	43.6	43.3	43.6	46.6	51.1	51.0	53.2	67.6	65.4	72.7	66.6	60.0	55.0	51.4	45.8	40.9	37.8	35.4	35.1
80	2.84	3.39	4.24	7.83	8.60	15.6	17.7	14.5	7.75	6.80	7.20	6.05	6.13	5.16	3.73	2.18	1.01	0.26	0.00
85	1.29	1.84	2.00	2.05	1.87	0.86	0.00	0.00	0.00	0.00	0.00	0.00	0.00	0.00	0.00	0.00	0.00	0.00	0.00
90	0.24	0.00	0.00	0.00	0.00	0.00	0.00	0.00	0.00	0.00	0.00	0.00	0.00	0.00	0.00	0.00	0.00	0.00	0.00

C Range: 0 - 360DEG  
 C Interval: 5.0DEG  
 Test Speed: HIGH  
 Temperature:25.3DEG  
 Operators:  
 Test Date:2016-01-15

γ Range: 0 - 90DEG  
 γ Interval: 0.5DEG  
 Test System:EVERFINE GO-2000B\_V1 SYSTEM V2.0.287  
 Humidity:65.0%  
 Test Distance:8.000m [K=1.0000]  
 Remarks:



LUMINOUS DISTRIBUTION INTENSITY DATA

Test:U:220.2V I:0.1020A P:20.60W PF:0.9120 Lamp Flux:2246.47x1 lm		
NAME: LED FLOOD LIGHT	TYPE:IP65	WEIGHT:1
SPEC.:PHILIPS 3030	DIM.:	SERIAL No.:
MFR.: QINHAN LIGHTING	SUR.:	PROTECTION ANGLE:

Table--3

UNIT: cd

C( DEG) γ (DEG)	190	195	200	205	210	215	220	225	230	235	240	245	250	255	260	265	270	275	280
0	839	839	839	839	839	839	839	839	839	839	839	839	839	839	839	839	839	839	839
5	849	848	848	847	847	847	846	846	845	844	843	842	840	840	839	838	838	837	837
10	850	849	849	848	847	847	846	845	845	844	844	843	842	840	838	837	836	836	836
15	863	861	859	857	854	852	849	847	845	842	841	840	840	839	837	836	835	835	834
20	874	873	872	870	867	864	859	855	848	837	827	820	815	811	808	805	803	803	803
25	844	847	850	855	859	863	853	841	828	814	803	794	786	781	777	773	771	770	770
30	790	797	806	819	822	815	810	806	800	790	776	765	757	751	746	742	739	738	737
35	725	735	749	756	755	753	752	752	754	754	739	717	702	690	680	674	671	670	671
40	659	666	674	674	679	690	694	688	680	674	664	650	634	622	611	605	603	602	603
45	601	609	603	604	607	614	611	605	594	590	584	576	564	552	543	536	535	533	534
50	535	540	539	542	541	530	521	515	507	505	498	486	474	461	449	440	439	438	441
55	459	458	461	467	456	446	440	433	412	401	392	382	373	362	353	344	343	343	345
60	378	376	379	372	365	360	345	328	313	298	288	277	270	262	256	248	247	247	249
65	238	243	266	242	270	244	224	224	210	199	192	185	181	176	172	167	166	166	168
70	142	153	153	145	130	134	114	134	127	120	113	105	99.2	94.4	90.3	86.4	85.3	85.8	87.8
75	49.6	51.4	57.5	52.6	52.9	58.4	57.5	56.8	52.5	43.0	33.7	25.1	18.0	12.3	7.93	5.34	4.47	5.25	7.75
80	2.76	6.84	2.50	13.9	16.7	11.2	4.28	1.78	1.54	1.27	1.01	0.75	0.50	0.29	0.13	0.03	0.00	0.03	0.13
85	0.97	0.91	0.77	0.38	0.00	0.00	0.00	0.00	0.00	0.00	0.00	0.00	0.00	0.00	0.00	0.00	0.00	0.00	0.00
90	0.00	0.00	0.00	0.00	0.00	0.00	0.00	0.00	0.00	0.00	0.00	0.00	0.00	0.00	0.00	0.00	0.00	0.00	0.00

C Range: 0 - 360DEG  
 C Interval: 5.0DEG  
 Test Speed: HIGH  
 Temperature:25.3DEG  
 Operators:  
 Test Date:2016-01-15

γ Range: 0 - 90DEG  
 γ Interval: 0.5DEG  
 Test System:EVERFINE GO-2000B\_V1 SYSTEM V2.0.287  
 Humidity:65.0%  
 Test Distance:8.000m [K=1.0000]  
 Remarks:

