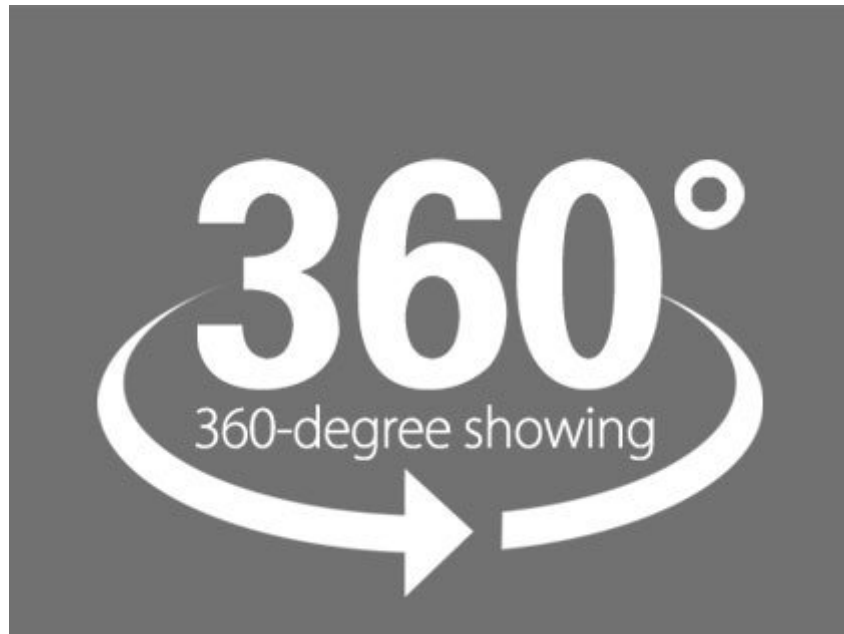




CO2 LASER CUTTING  
**PAY TRIBUTE TO THE LABOURER**  
LASER ENGRAVING CUTTING MACHINE O-C  
15% OFF FROM MAY 1ST TO MAY 30TH



# O-C

Laser Engraving Cutting Machine

Inquiry



Online

- ① New chassis, more consistent with usage.The integrated whole machine design, the work is more stable,the processing production is more environmental protection.
- ② Ultra high strength industrial steel plate,The equipment runs smoothly and the service life is longer.
- ③ Avoid defective products due to support reflection,It's also easier to collect, Improve work efficiency.
- ④ Compact machine installation, small space requirement, equipped with 40w, 80w laser, meet the demand of different material and thickness of the cutting.

## Technical Parameters

---

Model

---

Working Area

---

Laser Power

---

Engraving Speed

---

Min. Engraving Size

---

Highest Scanning Precision

---

Locating Accuracy

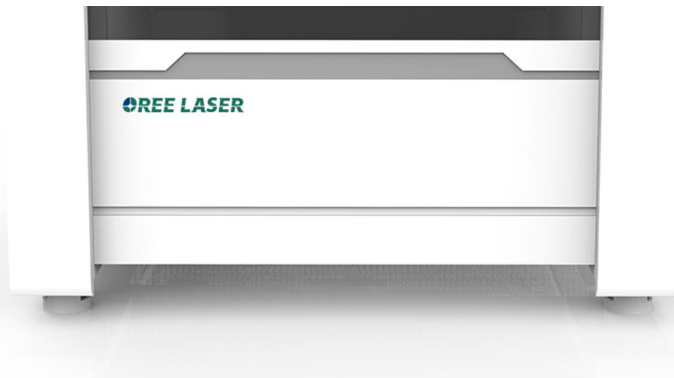
---

O-C 1006	O-C 1309	O-C 1610	O-C 1812
1000*600mm	1300*900mm	1600*1000mm	1800*1200mm
80w/100w/120w/150w/180w			
0-20000mm/min			
English Letter. 1.0mm*1.0mm			
2500DPI			
≤+0.01mm			

---

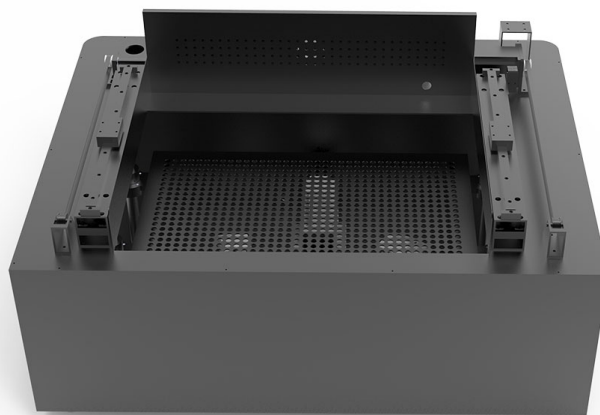
Above data is only for reference

---



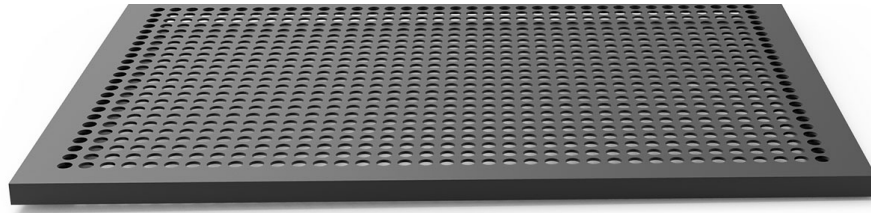
## More stable, more environmentally friendly.

New chassis, more consistent with usage.  
The integrated whole machine design, the work is more stable,  
the processing production is more environmental protection.



## High strength has high quality.

Ultra high strength industrial steel plate,  
The equipment runs smoothly and the service life is longer.



## Beehive, more reasonable, more efficient.

Avoid defective products due to support reflection,  
It's also easier to collect, Improve work efficiency.



## Application

Acrylic, density board, plastic, acrylic acid. Professional models designed for engraving or cutting of non-metallic materials such as rubber, bamboo, marble, glass and crystal.

Online



---

# PROVIDE THE BEST CUSTOMER EXPERIENCE.

- **High Precision**

Use Taiwan square rail, famous 3-phase stepper motor.

- **Smart body**

Smart size make putting and working easily.

- **Long service life**

All cables come with UL,CE certification

- **Energy conservation**

Air pump, exhaust fans will work synchronous with the machine ,everything will stop once the machine stop working.

- **Safety**

All the door come with the lock.

- **Integration machine**

The work is more stable and the processing is more environmentally friendly.

- **Red Cross Dot Position System CONTROL DIRECTLY**

Positing accuratly make cutting and engraving conveniently.

- **CORELDRAW&CAD CONTROL DIRECTLY**

Advanced working software which can be imbedded into CorelDraw and CAD,users can operate the machine by CorelDraw or CAD software directly.

- **CONTROL PANNEL**

Show the working process directly convenient to check.

- **WIFI control**

convenient - wireless control; High efficiency - One PC can control several machine at one time.

- **Stainless steel up-down table& ball screw**

High precision low noise; Very stable never rust high loading capacity.

---

- **DOOR SENSOR INTERLOCK**

Safety operation.

- **Professional control system**

Support fast cutting with shortest path selection.

- **LED light**

Energy efficient highlight long life time.

- **JAPAN OMRON ELECTRONIC COMPONENTS**

Long life time.

- **Stepper motor**

High-precision 3-phase stepper motor drive.

- **Adjustable laser tube holder**

Able to do slightly adjustment. More convenient to replace the laser tube.

- **Belt import from Taiwan**

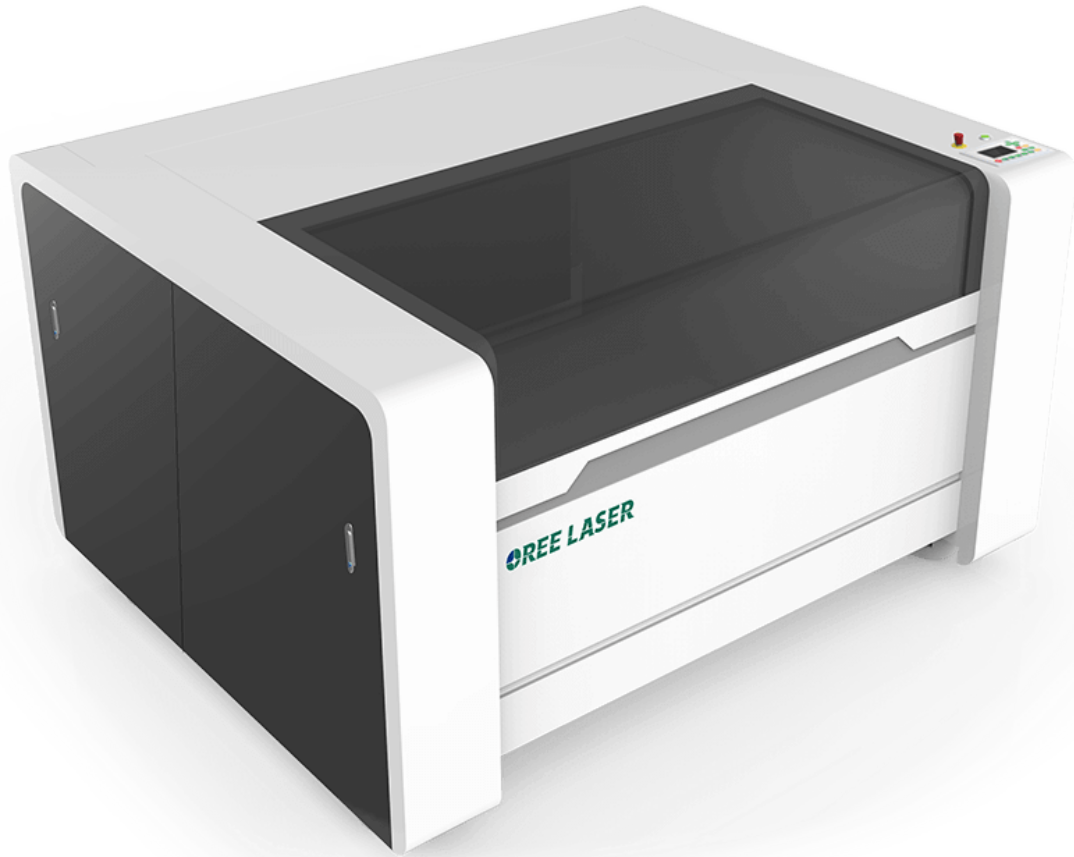
Stable transmission. Easy to maintain.

- **TAIWAN SQUARE RAIL**

High speed and precision. High load capacity and rigidity.

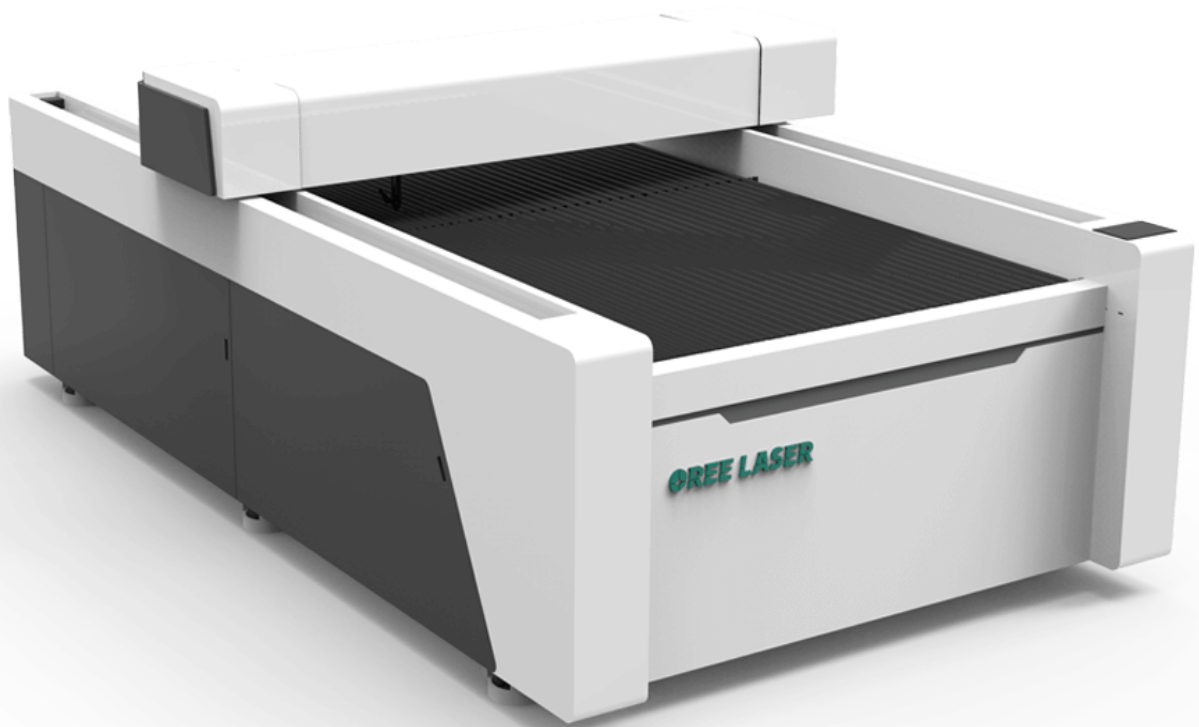


MICRO LASER ENGRAVING CUTTING MACHINE O-M

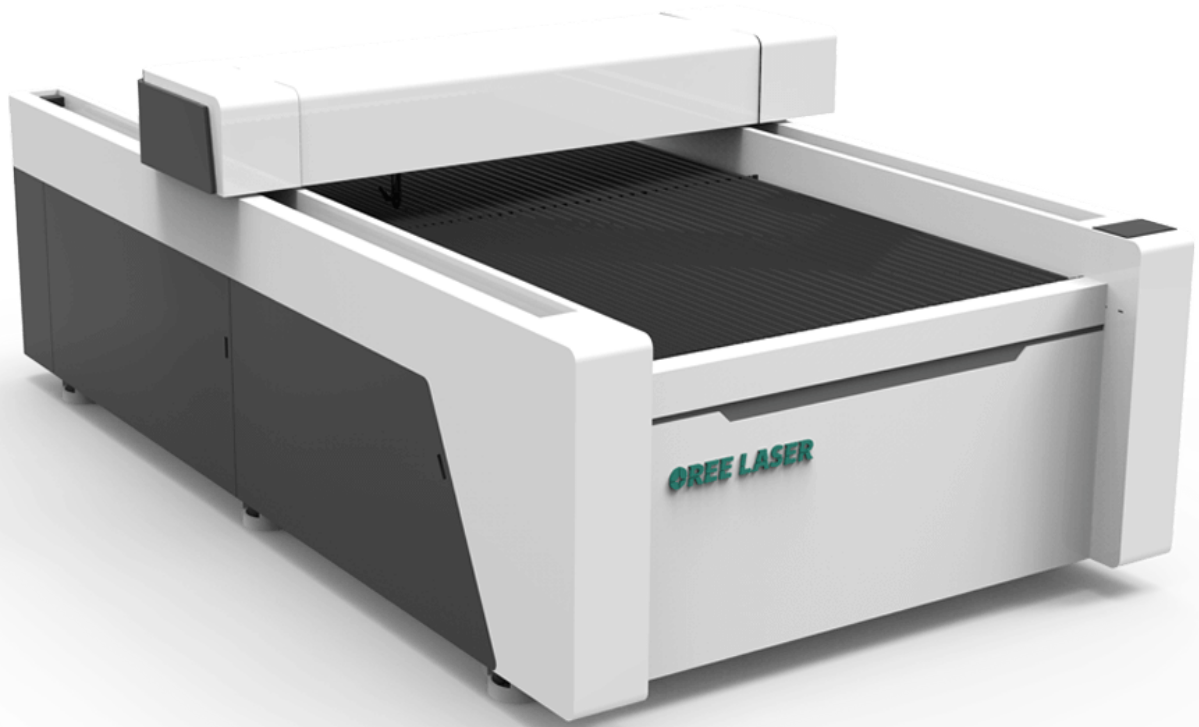


LASER ENGRAVING CUTTING MACHINE O-C





FLATBED LASER ENGRAVING CUTTING MACHINE O-B



METAL NON METAL LASER CUTTING MACHINE O-BM

Name

Country

\*Phone

\*Email

Content

Online





PRODUCTS



COMPANY



VIDEO



CONTACT US

TEL : +86-531-88983665

ADD : NO.19-1, Jiyang Street Industry Park, Jinan, China

E-MAIL : sales@oreelaser.com

service@oreelaser.com

العربية Русский Español Português 日本語 한국어 简体中文 繁体中文

Online

