



Product Item: SE-12V-6W

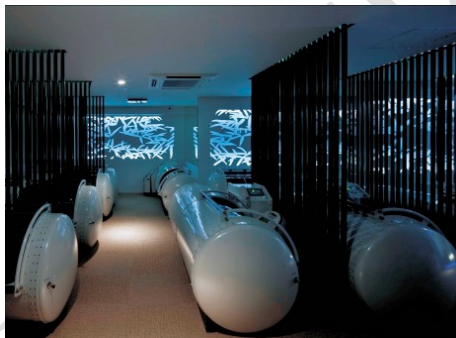


Features:

- Light source: 60pcs/m 2835 SMD LED
- Material: superior and heat-resistant 8mm PCB
- Input voltage: DC 12V
- RA>80
- Lifespan: 30,000 hours
- Waterproofing grade: WF0
- Easy installation, cuttable and joinable,
- Accessories complete.

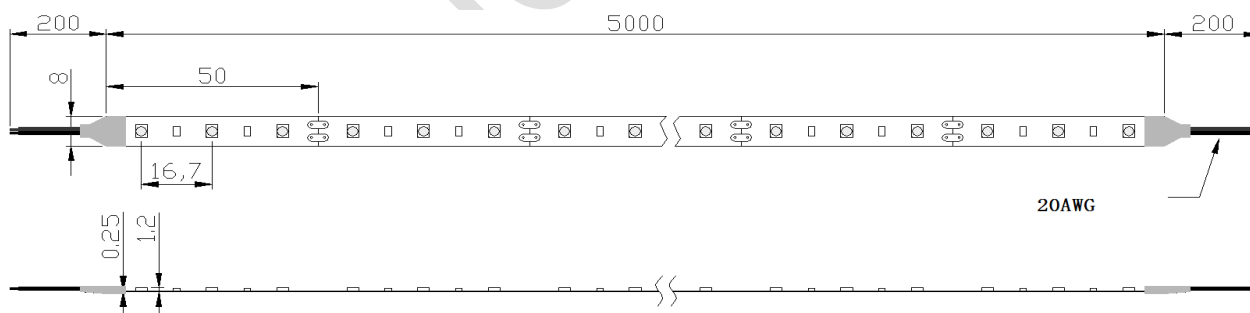
Application:

- Cove lighting. Architectural lights for canopy, corridor, Archway.
- Backlight or edge lighting for signage, DIY lights for home use.
- Path and contour marking.
- Decorative lights for holiday, event, show, exhibition.

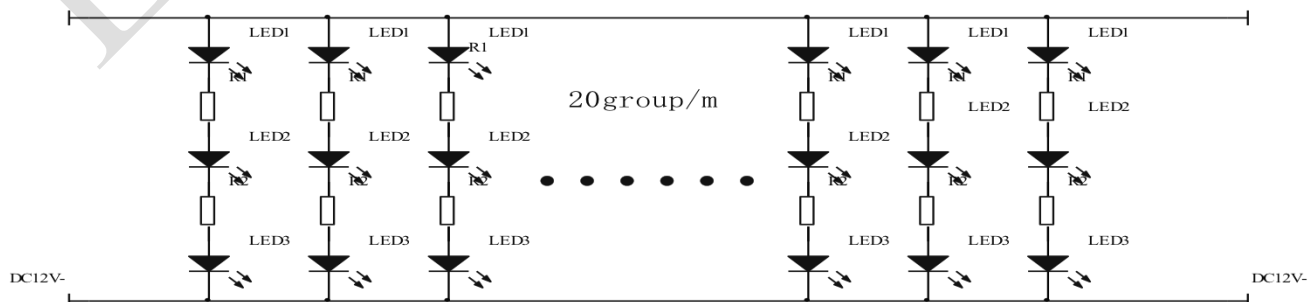


Dimension& Circuit drawings (unit: mm):

Dimension



Circuit drawings



Electrical Parameter:

Product Size (mm)	5000*8*1.2
LED Quantity (per meter)	60 PCS
LED Type	2835 SMD LED
Input Voltage	DC12V
Current (Amps/m)	0.48A
Min Cuttable Length (mm)	50
Beam Angle	120°
Max. Power Consumption (W/meter)	6W
Operating Temperature	-25° C ~ +45° C
Storage Temperature	-30° C ~ +80° C
Net Weight(kg)	0.109kg
Estimated Life	30,000 hrs
Certifications	RoHs & CE

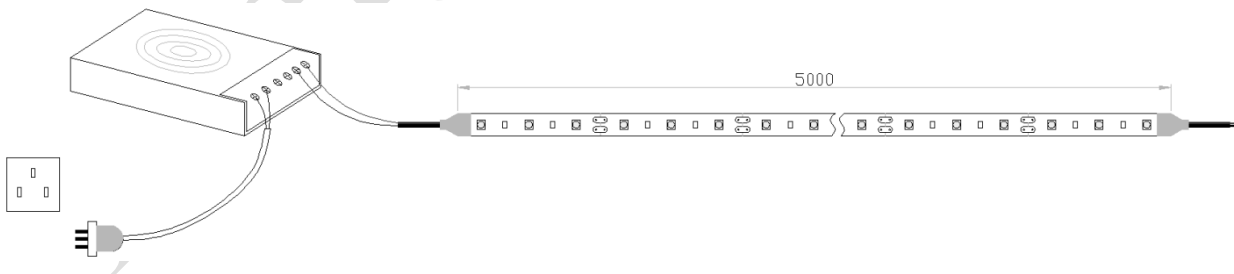
Optical Parameters:

CRI 80-A Type

Item No.	Color	CCT	Lumen/meter	IP rate
SE-12V-6W	Warm White	2800-3000K	570LM	IP20
	Natural white	4000-4500K	580LM	
	Cool white	5500-6000K	590LM	

Linking operation:

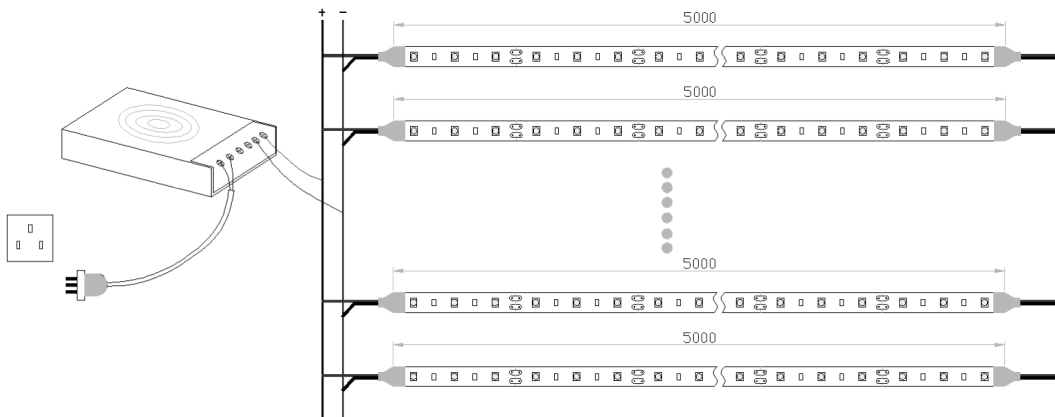
1. The maximum length in series is 5 meters when led strip is DC 12V



Cautions: Strip light gross power is 80% of power supply rated operational power to get longer lifespan.

2. Parallel connection is highly recommended as safe electrical operation mode.

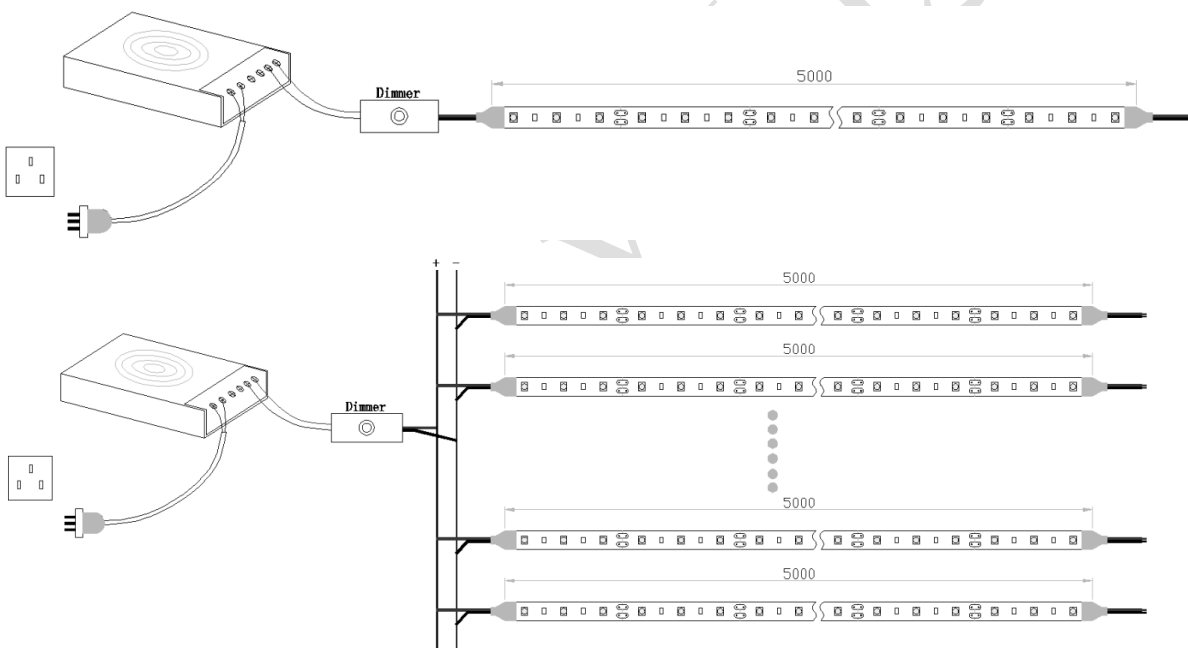
DC12V



Cautions: Strip light gross power is 80% of power supply rated operational power to get longer lifespan. Strip light gross Ampere is 80% of wire Max current.

3. How do we use one dimmer to controller led strips?

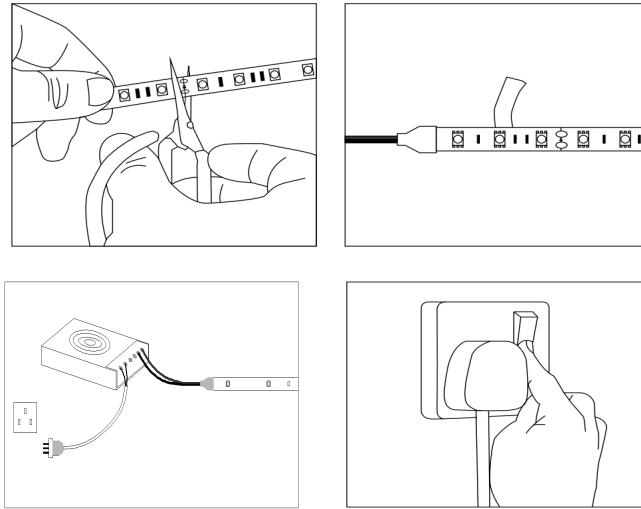
A. When the wattage of led strip is lower than the max wattage of dimmer



Cautions: Strip light gross power is 80% of power supply rated operational power to get longer lifespan. Strip light gross Ampere is 80% of wire Max current. Strip light gross power is 80% of LED controller device rated operational power.

Installation:

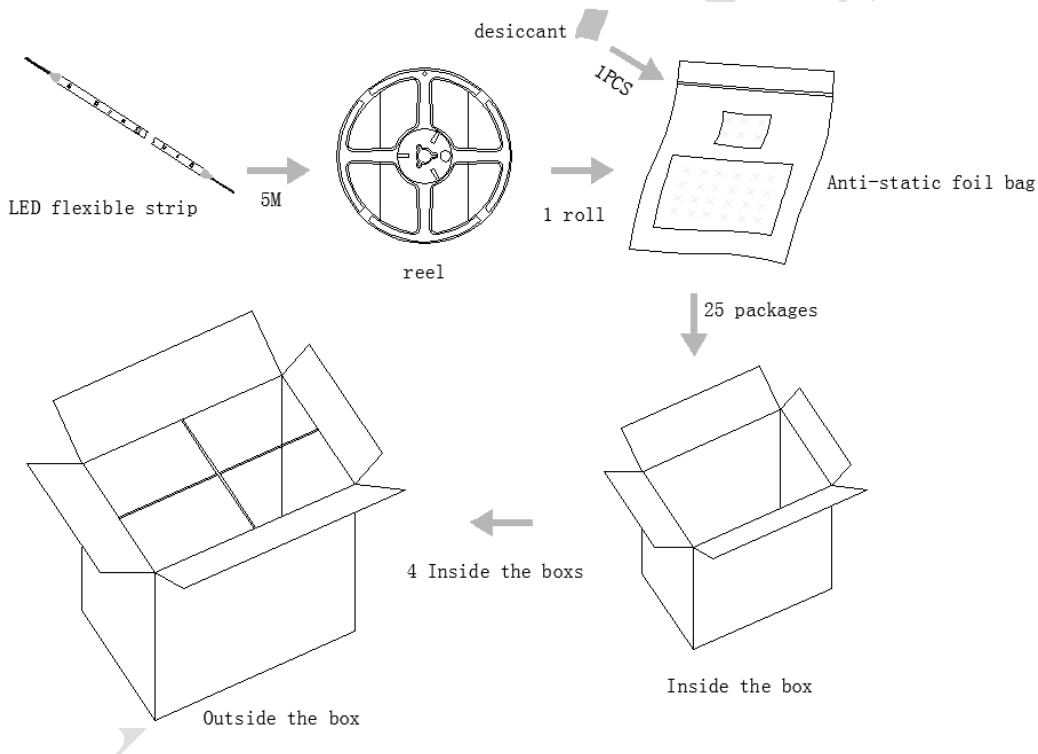
1. Cut the strip only at the cutting point.
2. Peel back the tape & stick to clean surface.
3. Connect the strip to power supply.
4. Switch on and enjoy your strip lights.



Cautions:

1. It is recommended to install the LED strip within Aluminum extrusion or on Metal surface to allow sufficient heat dissipation;
2. Only licensed electrician should carry out the installation.

Packing information:



Size of the Reel:	17.8 cm (7 inch)
Size of Anti-static package:	L215*W240*H0.25mm
Size of inside box:	L296*W223*H250mm
Size of outer box:	L610*W462*H278mm
5m/reel,1 roll in an anti-static bag, 25 bags per one inner carton, 100 bags in an outer box	