

# Ningbo Hyforce Hydraulic Machinery Co., Ltd

## Hydraulic Accessories



Office Address: Room 15B04, Aolisai Building, No.958 Qianhu North Road, Yinzhou, Ningbo, China  
Zip Code: 315100  
Plant Address: No.6, Hezhou Road, Jiaochuan Street, Zhenhai, Ningbo, China  
Zip Code: 315207  
TEL: 0086-574-88017526; FAX: 0086-574-88017527  
Website: [www.hy-force.com](http://www.hy-force.com)  
Email: [sales@hy-force.com](mailto:sales@hy-force.com)

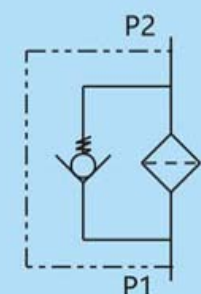
## Hydraulic Accessories Series

Content of Hydraulic Accessories Series	Page No.
SP Series Spin-on Line Filter	01-02
DF Series Modular High Pressure Line Filter	03-04
WF Series Magnetic Suction Filter	05-06
WU, XU Series Suction Filter	07-08
MF Series Suction Filter	09
AB Series Filler Breather Filter	010
CD Series Filler Breather Filter	011
EF Series Filler Breather Filter	012
QUQ Series Filler Breather Filter	013
PAF Series Filler Breather Filter	014
PG63 Series Stainless Pressure Gauge	015-016
PG100 Series Stainless Pressure Gauge	017-018
YWZ Series Level Fluid Indicator with Thermometer	019
CYW Series Level Fluid Indicator with Thermometer	020
LS Series Level Fluid Indicator with Thermometer	021
HY37 Series Mesh Strainer	022

## Hydraulic Accessories Series

### SP Series Spin-on Line Filter

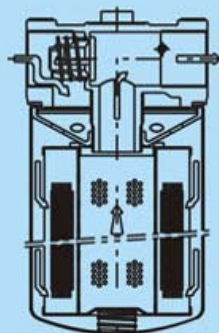
#### Symbol



Return Function



Suction Function



### Technical data

Model	Max. working pressure (MPa)	Blow up pressure (MPa)	By-pass setting pressure (MPa)	Max. flow rate (l/m)	
				Return function	Suction function
SP-06 × 10	0.7	2	0.25	60	20
SP-06 × 25				70	25
SP-08 × 10				60	20
SP-08 × 25				70	25
SP-10 × 10				144	42
SP-10 × 25				160	50
SPA-10 × 10				200	58
SPB-10 × 10				320	80

### How to order

SP	A	06	10	J	R
Product type	Element type	Size	Filtration precision	Function type	Indicator Gauge
Spin-on line filter	No code: Regular element A or B: Long element (Only for size 10×10μm)	06: Rc3/4" 08: Rc1" 10: Rc1 1/4"	10: 10μm 25: 25μm	No code: Return function J: Suction function	No code: Without gauge R: Gauge for return line S: Gauge for suction line

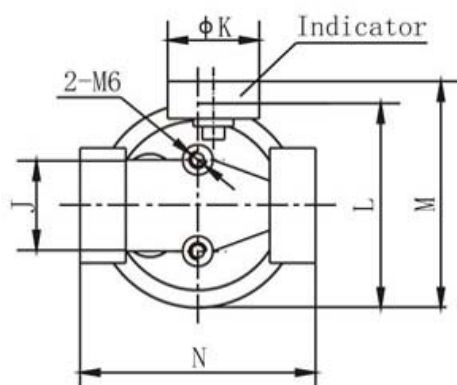


## Hydraulic Accessories Series

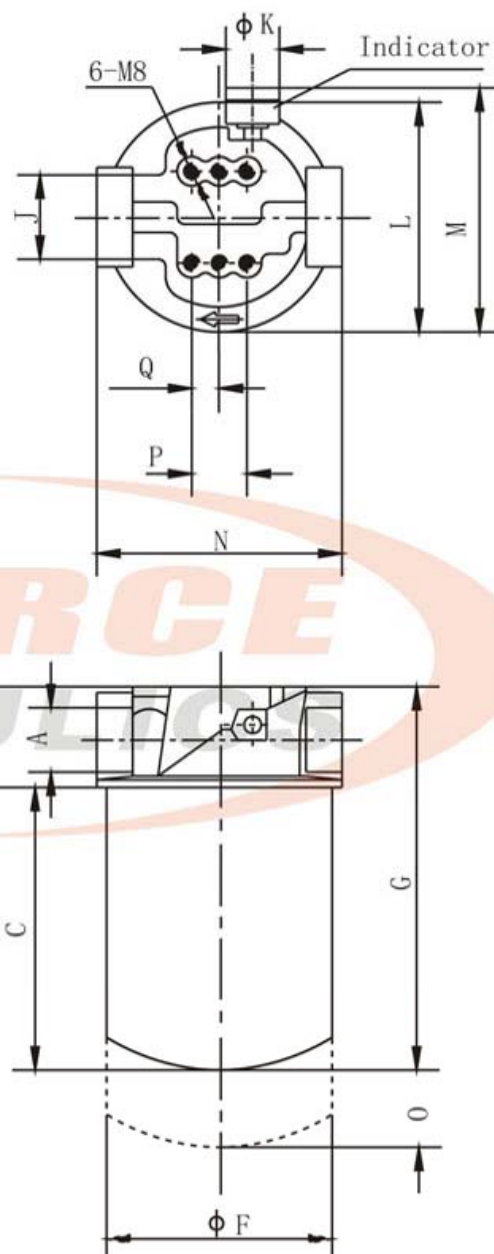
### Dimensions

Unit: mm

SP-06/SP-08



SP-10/SPA-10/SPB-10



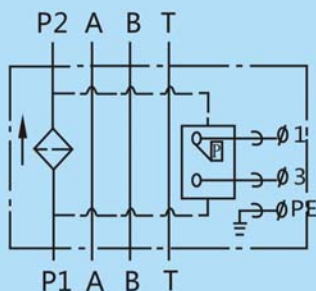
02

Model	A	B	C	F	G	J	K	L	M	N	O	P	Q	Weight (kgs)
SP-06 × ×	Rc3/4"	53	135	93	188	38	42	80	105	93	25	—	13	0.76
SP-08 × ×	Rc1"													0.76
SP-10 × ×	Rc1 1/4"	62	176	125	238	47	42	136	150	136	45	37	18.5	1.88
SPA-10 × ×			231		293									2.7
SPB-10 × ×			270		332									3.2

## Hydraulic Accessories Series

### DF Series Modular High Pressure Line Filter

#### Symbol



#### Technical data

Model	Size	Pressure loss (MPa)		Indicator power (V/W)
		Initial	Max.	
DF-H30 × *	NG6	≤0.1	0.5	24/48
DF-H60 × *	NG10			220/50
DF-H110 × *				

#### How to order

DF	BH	H	60	10	Y
Product type	Medium	Working pressure	Flow rate	Filtration precision	Indicator type
Modular high pressure line filter	No code: Hydraulic oil BH: Water-glycol	H: 32MPa	30: 30l/m 60: 60l/m 110: 110l/m	3: 3μm 5: 5μm 10: 10μm 20: 20μm	No code: Without indicator Y: With CM- I indicator C: With CS-III indicator

A

B

C

D

E

F

G

H

I

J

K

L

M

N

O

P

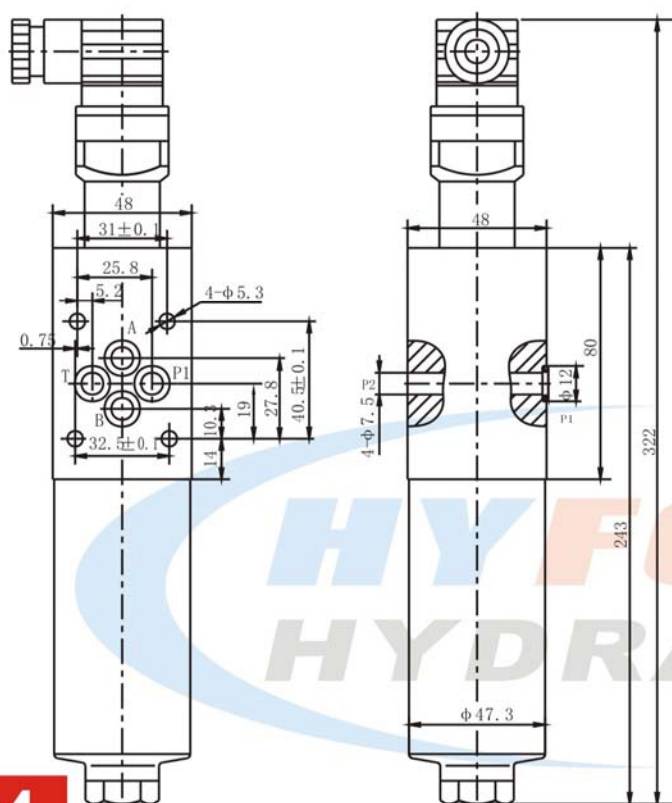
O3

## Hydraulic Accessories Series

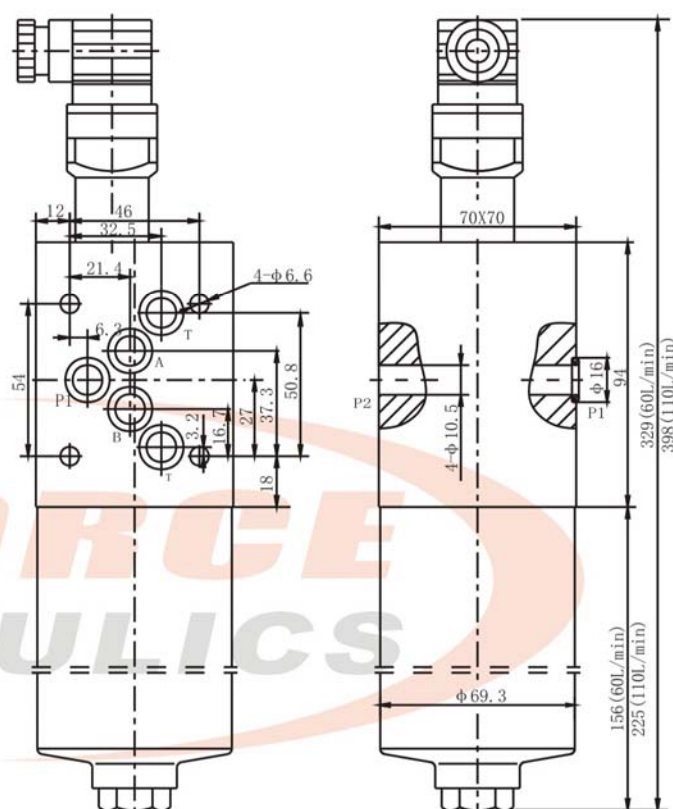
### Dimensions

Unit: mm

DF-H30



DF-H60/DF-H110



O4



## Hydraulic Accessories Series

### WF Series Magnetic Suction Filter

#### Symbol



With Magnet

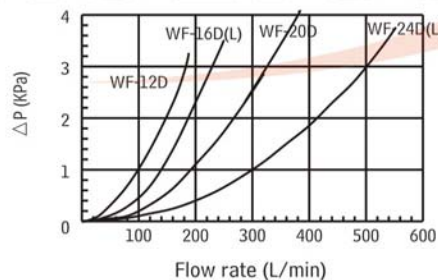
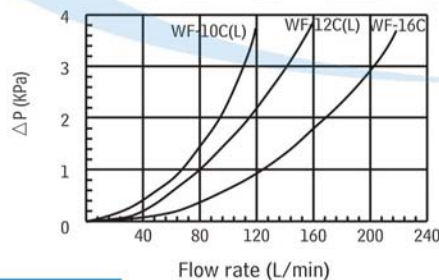
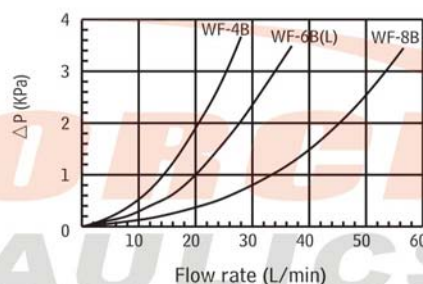
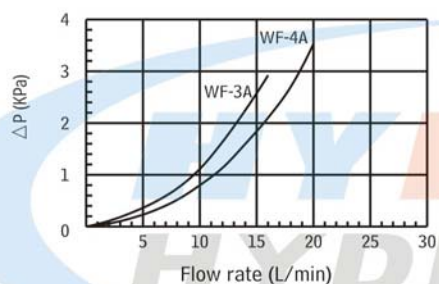


Without Magnet



#### Performance curves

Viscosity: 30CST



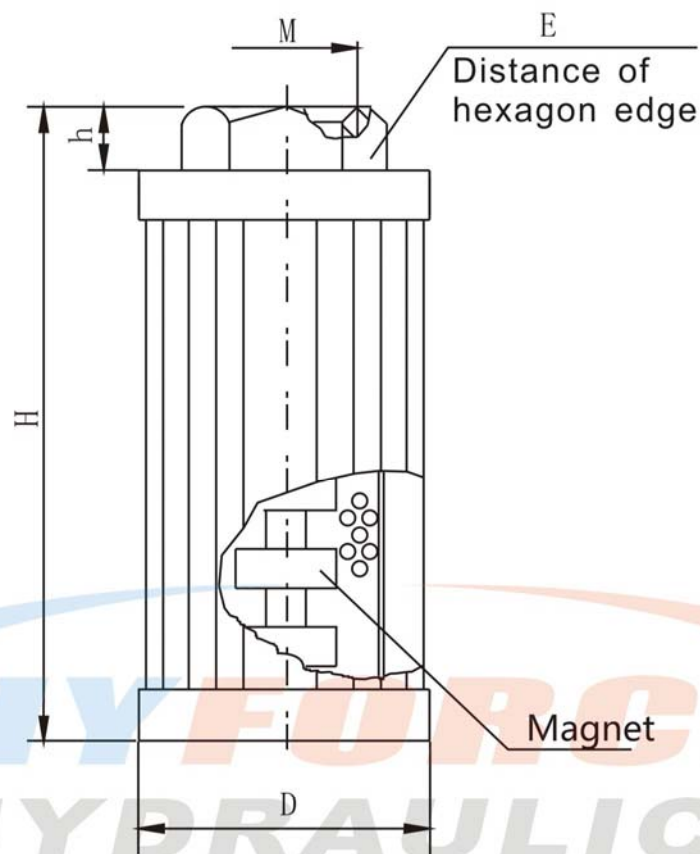
#### How to order

WF	C	BH	6	A	80
Product type	With magnet	Medium	Thread size	Outside dia.	Filtration precision
Suction filter	No code: Without magnet C: With magnet	No code: Hydraulic oil BH: Water-glycol	3: 3/8" 4: 1/2" 6: 3/4" 8: 1" 10: 1 1/4" 12: 1 1/2" 16: 2" 20: 2 1/2" 24: 3"	A: 50mm B: 70mm BL: 70mm C: 99mm CL: 99mm D: 130mm DL: 130mm	80: 80μm 100: 100μm 180: 180μm

## Hydraulic Accessories Series

### Dimensions

Unit: mm



Model	M	D	E	h	H	Filter area (cm <sup>2</sup> )
WF *-3A* *	G3/8"	50	30	10	85	282
WF *-4A* *	G1/2"				70	41
WF *-4B* *						
WF *-6B* *	G3/4"	145	832			
WF *-6BL* *						
WF *-8B* *	G1"	99	69	15		
WF *-10C* *	G1 1/4"				232	2140
WF *-10CL* *					G1 1/2"	142
WF *-12C* *	232					2140
WF *-12CL* *						
WF *-16C* *	G2"	130	100	20	170	2015
WF *-12D* *	G1 1/2"				270	3590
WF *-16D* *						
WF *-16DL* *	G2 1/2"					
WF *-20D* *					G3"	330
WF *-24D* *						
WF *-24DL* *						

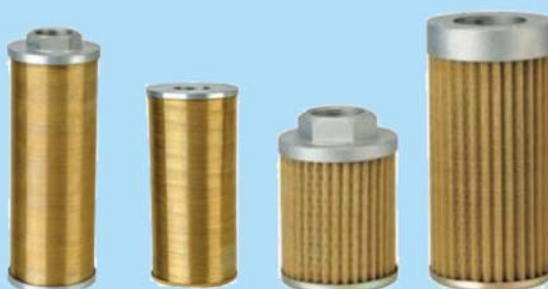
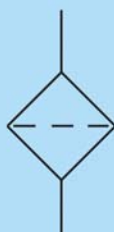
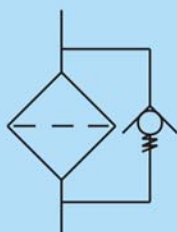
O6



## Hydraulic Accessories Series

### WU, XU Series Suction Filter

#### Symbol



With By-pass Valve    Without By-pass Valve

#### Technical data

Model	Initial pressure loss (MPa)	By-pass valve cracking pressure (MPa)	Connection type
* U-16 × * -J	≤0.01	≤0.02	Thread connection
* U-25 × * -J			
* U-40 × * -J			
* U-63 × * -J			
* U-100 × * -J			
* U-160 × * -J			
WU-225 × * G-J			Flange connection
* U-250 × * F-J			
* U-400 × * F-J			
* U-630 × * F-J			

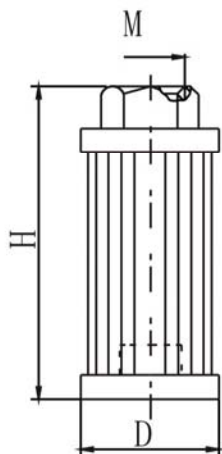
#### How to order

WU	I	BH	160	80	F
Product type	By-pass valve	Medium	Flow rate	Filtration precision	Connection type
WU: Wire mesh filter XU: Notched wire filter	No code: Without by-pass valve I: With by-pass valve	No code: Hydraulic oil BH: Water-glycol	6: 6l/m 10: 10l/m 16: 16l/m 25: 25l/m 40: 40l/m 63: 63l/m 100: 100l/m 160: 160l/m 225: 225l/m 250: 250l/m 400: 400l/m 630: 630l/m	80: 80μm 100: 100μm 180: 180μm (Only for WU series)	No code: Metric thread G: Inch thread F: Flange connection

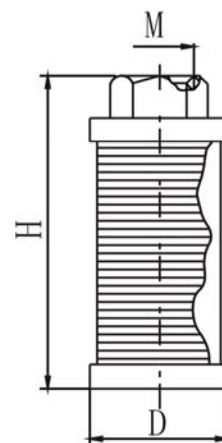
## Hydraulic Accessories Series

### Dimensions

Unit: mm

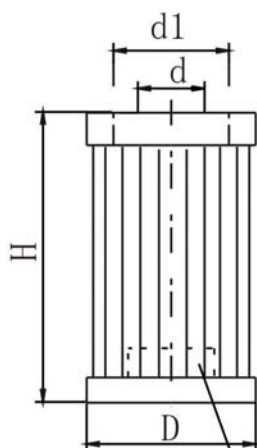


Model	H	D	M
WU * 16× *	84	35	M18×1.5
WU * 25× *	104	43	M22×1.5
WU * 40× *	124		M27×2
WU * 63× *	103	70	M33×2
WU * 100× *	153		M42×2
WU * 160× *	200	82	M48×2
WU * 225× * G	165	150	G2"



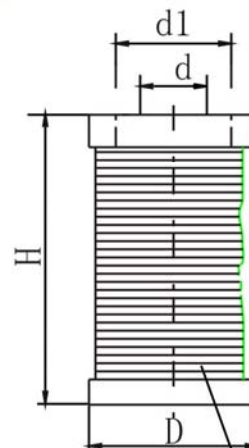
Model	H	D	M
XU * 6× *	73	56	M18×1.5
XU * 10× *	104		
XU * 16× *	158		
XU * 25× *	125	75	M22×1.5
XU * 40× *	198		M27×2
XU * 63× *	186	99	M33×2
XU * 100× *	288		M42×2
XU * 160× *	368	118	M48×2

O8



By-pass valve

Model	H	D	d	d1
WU * 250× * F	182	88	50	74
WU * 400× * F	229	105	65	93
WU * 630× * F	281	118	80	104



By-pass valve

Model	H	D	d	d1
XU * 250× * F	422	162	50	74
XU * 400× * F	491	222	65	93
XU * 630× * F	659	252	80	104

## Hydraulic Accessories Series

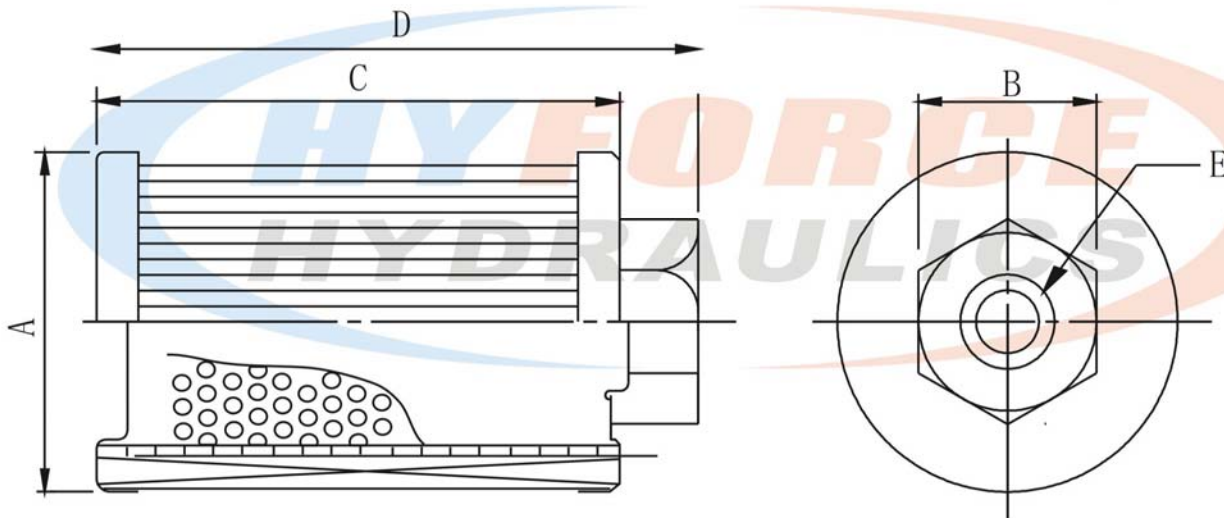
### MF Series Suction Filter

#### Symbol



### Dimensions & technical data

Unit: mm



Model	E	A	B	C	D	Filtration precision (μm)	Flow rate (m/l)	Weight (kg)		
MF-02	G1/4"	55	21	82	87	100	20	0.08		
MF-03	G3/8"						25	0.08		
MF-04	G1/2"	66	27	122	130		35	0.09		
MF-06	G3/4"		33				60	0.14		
MF-08	G1"		41				142	152	110	0.17
MF-10	G1 1/4"		50				162	174	210	0.19
MF-12	G1 1/2"	82	58	182	195		260	0.25		
MF-16	G2"	103	71	180	196		390	0.36		
MF-20	G2 1/2"	115	85	230	248		600	1.14		
MF-24	G3"	135	97		251		700	1.2		
MF-32	G4"	158	124	420	438		1000	3		

A

B

C

D

E

F

G

H

I

J

K

L

M

N

O9

P



## Hydraulic Accessories Series

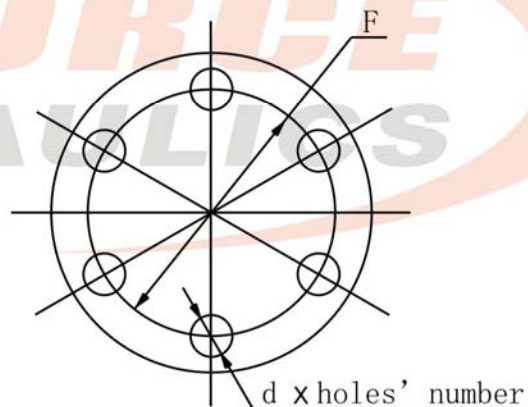
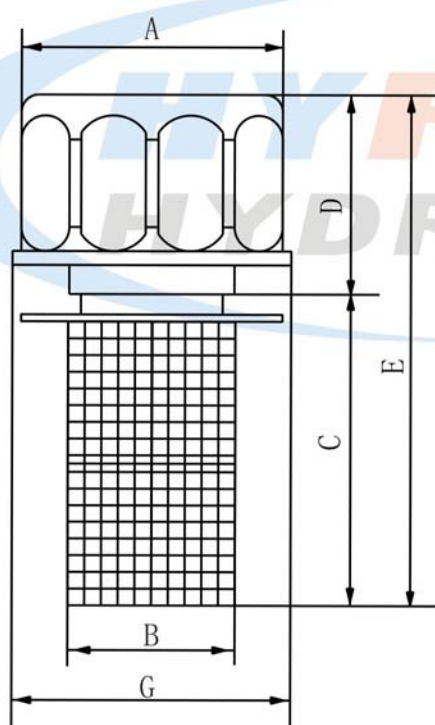
### AB Series Filler Breather Filter

#### Symbol



#### Dimensions & technical data

Unit: mm



O10

Model	Dia.	A	B	C	D	E	F	G	d x holes' number	Filtration precision	Weight (kg)
AB-1162	30	53	31	65	35	90	45	53	6×3	100µm	0.13
AB-1163	50	75	48	88	49	137	71	88	6×6		0.19

## Hydraulic Accessories Series

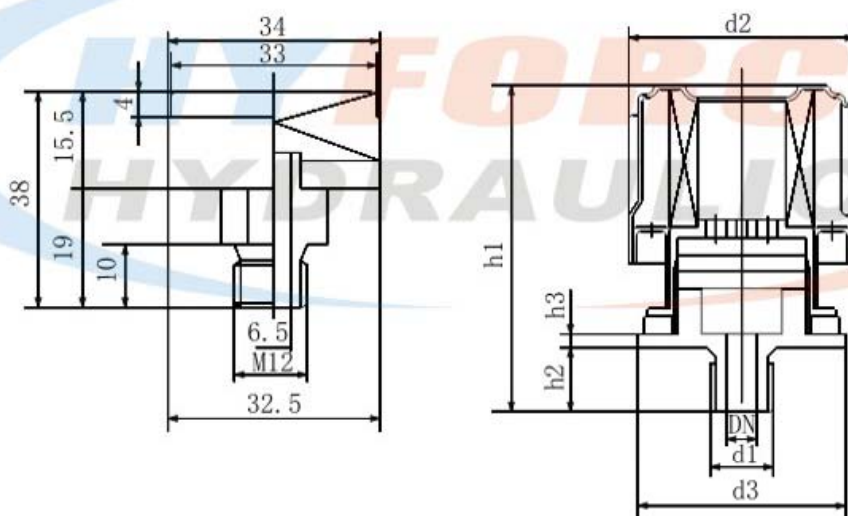
### CD Series Filler Breather Filter

#### Symbol



### Dimensions & technical data

Unit: mm



Filtration precision		d1		d2	d3	DN	h1	h2	h3	Air flow rate (m³/min)	
C type	D type	Metric thread	BSP thread							C type	D type
40μm	10μm	M12	G3/4"	—	—	6.5	—	—	—	0.75	0.45
		M33×2	G1"	113	96	25	102	17	6	3	1
		M42×2	G1 1/4"			32		19			
		M48×2	G1 1/2"	150	115	40	140	22	7	4	
		M60×2	G2"			50		24			
		M76×2	G2 1/2"			65		24	9	6.3	2.5
		M90×2	G3"	256	186	80	147	26			

How to order: Product type + thread type, for example: C-M33×2, D-G1

## Hydraulic Accessories Series

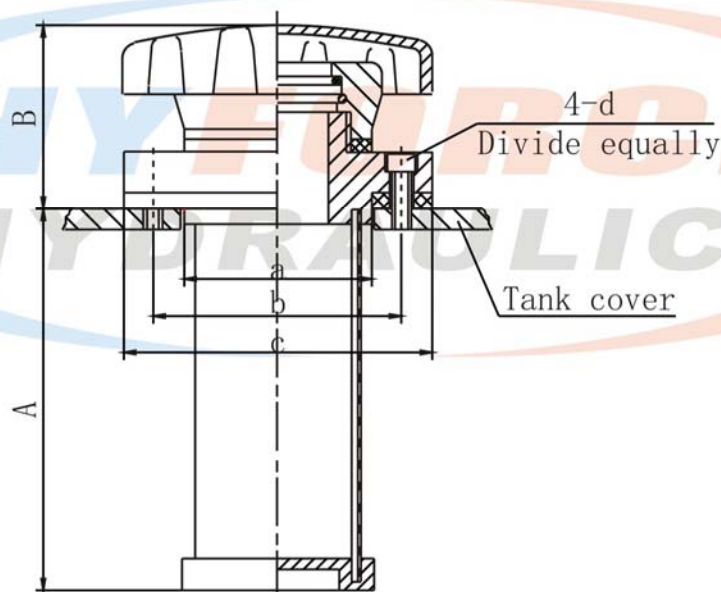
### EF Series Filler Breather Filter

#### Symbol



#### Dimensions & technical data

Unit: mm



012

Model	A	B	a	b	c	4-d	Filtration precision	Oil filter area (cm <sup>2</sup> )	Oil flow rate (l/min)	Air flow rate (l/min)
EF <sub>1</sub> -25	80	45	39	51	64	M4×10	125μm	80	9	65
EF <sub>2</sub> -32	100	50	47	59	70			120	14	105
EF <sub>3</sub> -40	120	55	55	66.5	80	M5×14		180	21	170
EF <sub>4</sub> -50	150	59	66	82	98	M6×14		270	32	260
EF <sub>5</sub> -65	190	70	81	102	120	M8×16		400	47	450
EF <sub>6</sub> -80	220	80	96	120	140			600	70	675
EF <sub>7</sub> -100	274	88	118	140	160	M8×20		942	110	1055
EF <sub>8</sub> -120	333	98	138	160	180			1370	160	1512



## Hydraulic Accessories Series

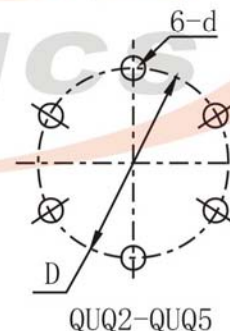
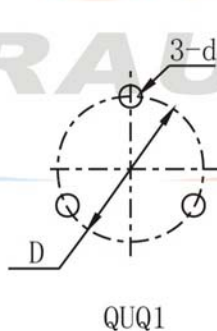
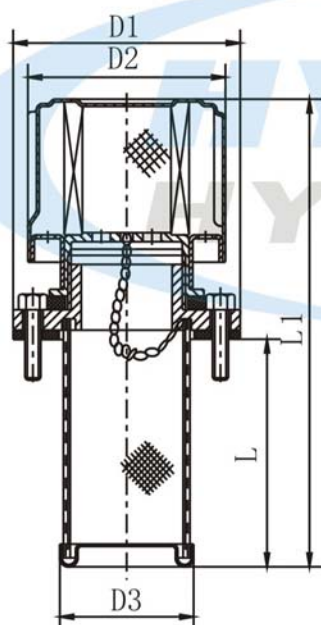
### QUQ Series Filler Breather Filter

#### Symbol



#### Dimensions & technical data

Unit: mm

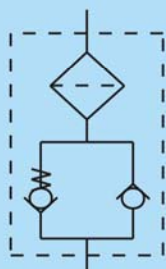


Model	D	D1	D2	D3	L	L1	d	Air filtration precision
QUQ1	41.3	50	44	28	82	134	3-M4×16	10μm
QUQ2	73	83	76	48	98	159	6-M4×8	
QUQ2.5	110	123	113	76	150	239		
QUQ3	145	160	150	89	195	320	6-M4×12	20μm
QUQ4	250	280	256	153	254	379	6-M10×20	40μm
QUQ5	280	320	295	197	270	395	6-M12×20	

## Hydraulic Accessories Series

### PAF Series Filler Breather Filter

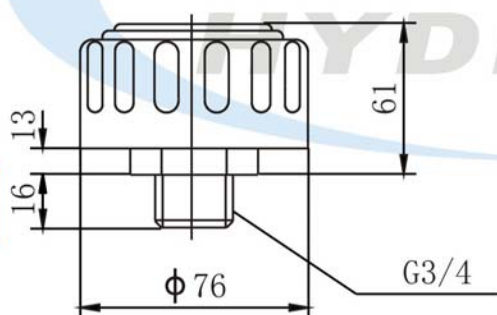
#### Symbol



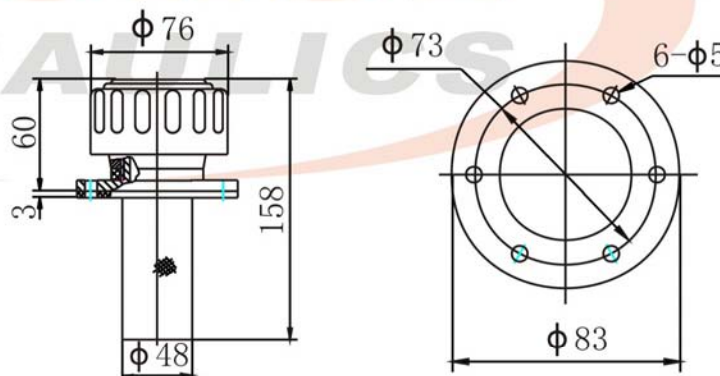
#### Dimensions & technical data

Unit: mm

#### Thread Connection Type



#### Flange Connection Type



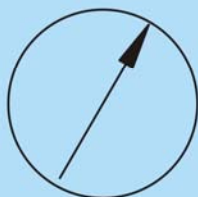
O14

Model	Connection type & size	Check valve cracking pressure (MPa)	Air filtration precision	Weight (kg)
PAF1	BSP Thread: G3/4"	0.02	10μm	0.2
PAF2	Flange: 6-M4×16	0.035	20μm	0.28
		0.07	40μm	

## Hydraulic Accessories Series

### PG63 Series Stainless Pressure Gauge

#### Symbol



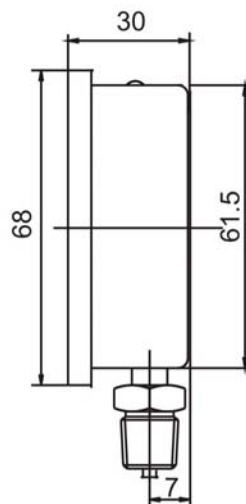
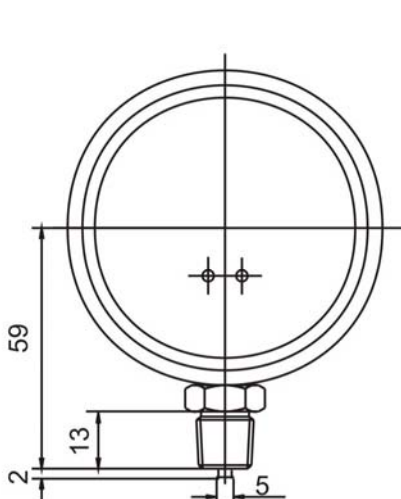
#### How to order

PG	63	B	100	G
Product type	Dial size	Connection option	Pressure range	Thread type & size
Pressure gauge	63mm	B: Bottom connection C: Back connection with U clamp F: Back connection with front flange	10: 0~10Bar 25: 0~25Bar 40: 0~40Bar 60: 0~60Bar 100: 0~100Bar 160: 0~160Bar 250: 0~250Bar 315: 0~315Bar 400: 0~400Bar	G: BSP1/4" Z: NPT1/4" S: SAE 6 M: M14×1.5

#### Dimensions

Unit: mm

#### Bottom Connection Type



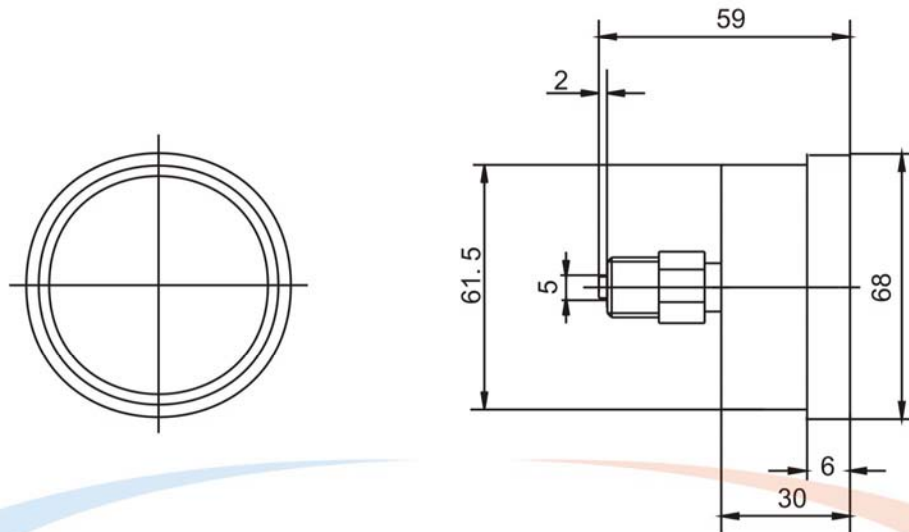


## Hydraulic Accessories Series

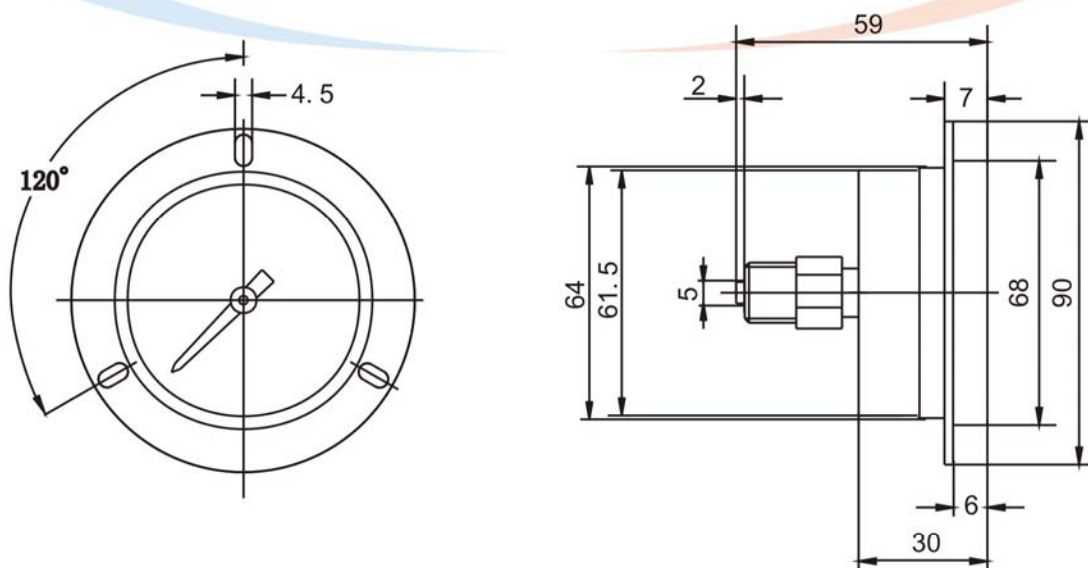
### Dimensions

Unit: mm

#### Back Connection Type



#### Back Connection Type with Front Flange

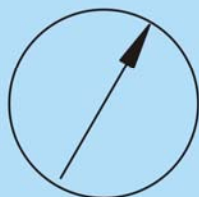


O16

## Hydraulic Accessories Series

### PG100 Series Stainless Pressure Gauge

#### Symbol



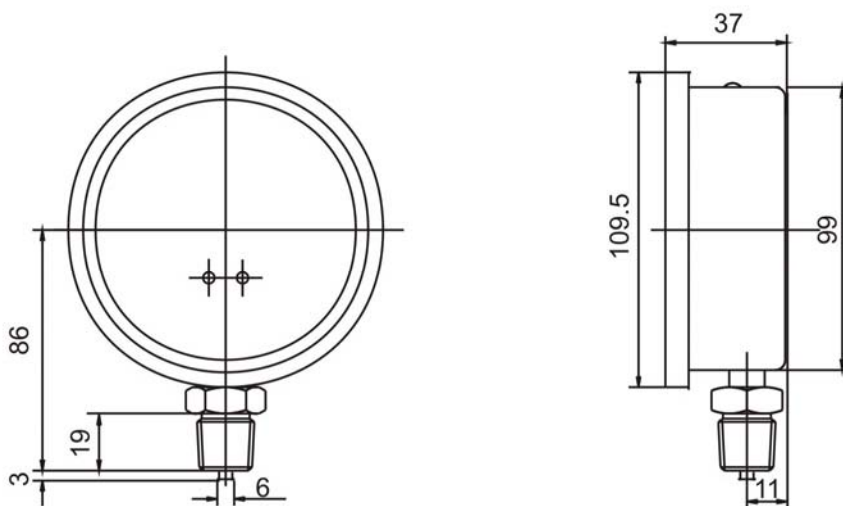
#### How to order

PG	100	B	100	G
Product type	Dial size	Connection option	Pressure range	Thread type & size
Pressure gauge	100mm	B: Bottom connection C: Back connection with U clamp F: Back connection with front flange	10: 0~10Bar 25: 0~25Bar 40: 0~40Bar 60: 0~60Bar 100: 0~100Bar 160: 0~160Bar 250: 0~250Bar 315: 0~315Bar 400: 0~400Bar	G: BSP1/2" Z: NPT1/2" S: SAE 8 M: M20×1.5

#### Dimensions

Unit: mm

#### Bottom Connection Type

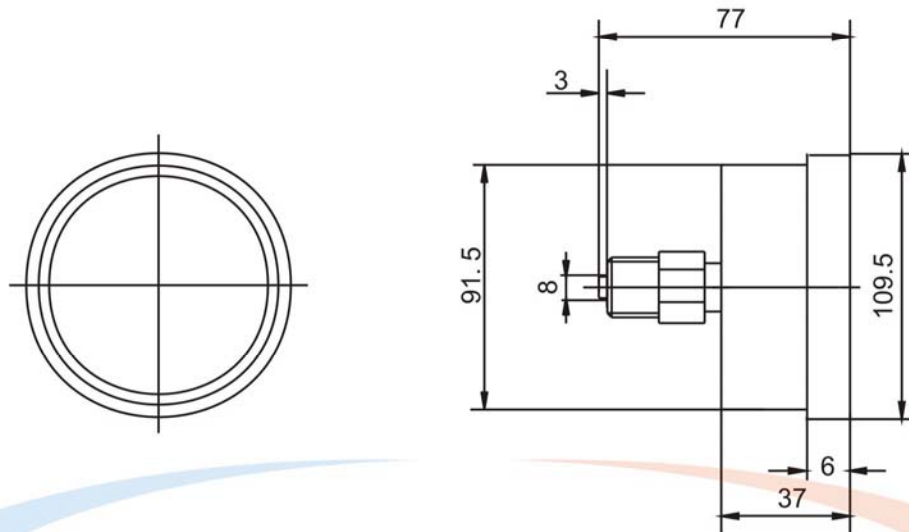


## Hydraulic Accessories Series

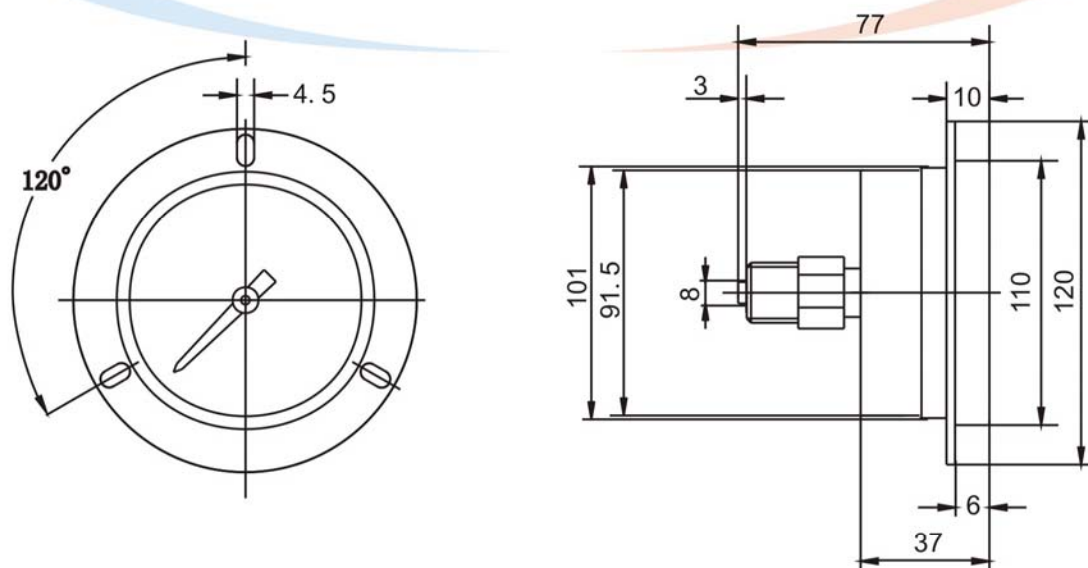
### Dimensions

Unit: mm

#### Back Connection Type



#### Back Connection Type with Front Flange



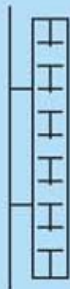
O18



## Hydraulic Accessories Series

### YWZ Series Level Fluid Indicator with Thermometer

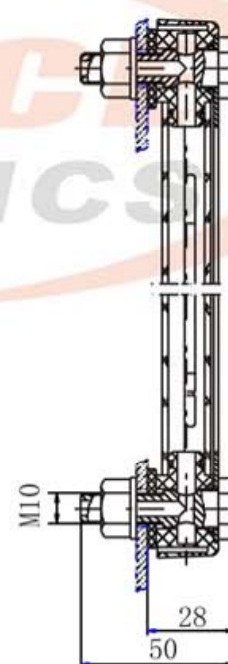
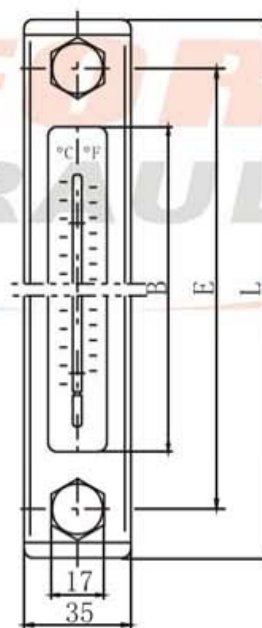
#### Symbol



#### Dimensions

Model	L	E	B
YWZ * 76 *	108	76	37
YWZ * 80 *	112	80	42
YWZ * 100 *	132	100	62
YWZ * 125 *	157	125	87
YWZ * 127 *	159	127	89
YWZ * 150 *	182	150	112
YWZ * 160 *	192	160	122
YWZ * 200 *	232	200	162
YWZ * 250 *	282	250	212
YWZ * 254 *	286	254	216
YWZ * 300 *	332	300	262
YWZ * 350 *	382	350	312
YWZ * 400 *	432	400	362
YWZ * 450 *	482	450	412
YWZ * 500 *	532	500	462

Unit: mm



#### How to order

YWZ	BH	127	T	M12
Product type	Medium	Dimension E	With thermometer	Bolt size
YWZ level indicator	No Code: Hydraulic Oil BH: Water-glycol	Refer to dimension chart	No code: Without thermometer T: With thermometer	No code: M10 Bolt M12: M12 Bolt

## Hydraulic Accessories Series

### CYW Series Level Fluid Indicator with Thermometer

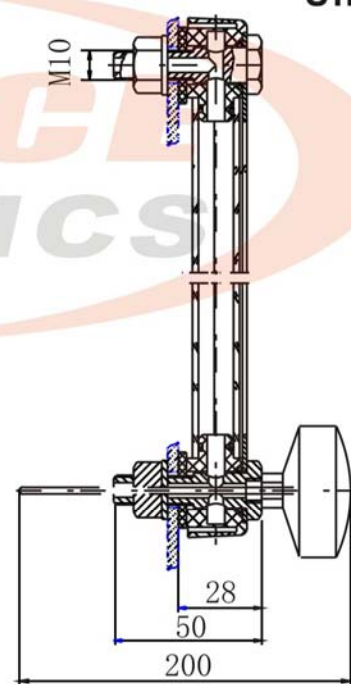
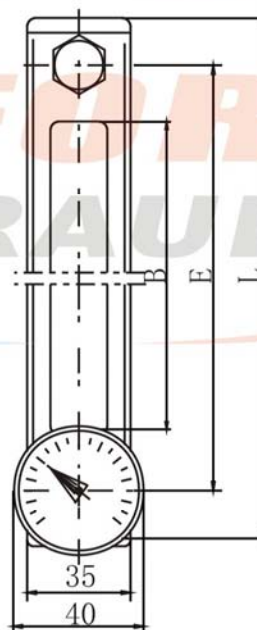
#### Symbol



#### Dimensions

Unit: mm

Model	L	E	B
CYW * 76	108	76	37
CYW * 80	112	80	42
CYW * 100	132	100	62
CYW * 125	157	125	87
CYW * 127	159	127	89
CYW * 150	182	150	112
CYW * 160	192	160	122
CYW * 200	232	200	162
CYW * 250	282	250	212
CYW * 254	286	254	216
CYW * 300	332	300	262
CYW * 350	382	350	312
CYW * 400	432	400	362
CYW * 450	482	450	412
CYW * 500	532	500	462



#### How to order

CYW	BH	127
Product type	Medium	Dimension E
CYW level indicator with thermometer	No code: Hydraulic oil BH: Water-glycol	Refer to dimension chart

## Hydraulic Accessories Series

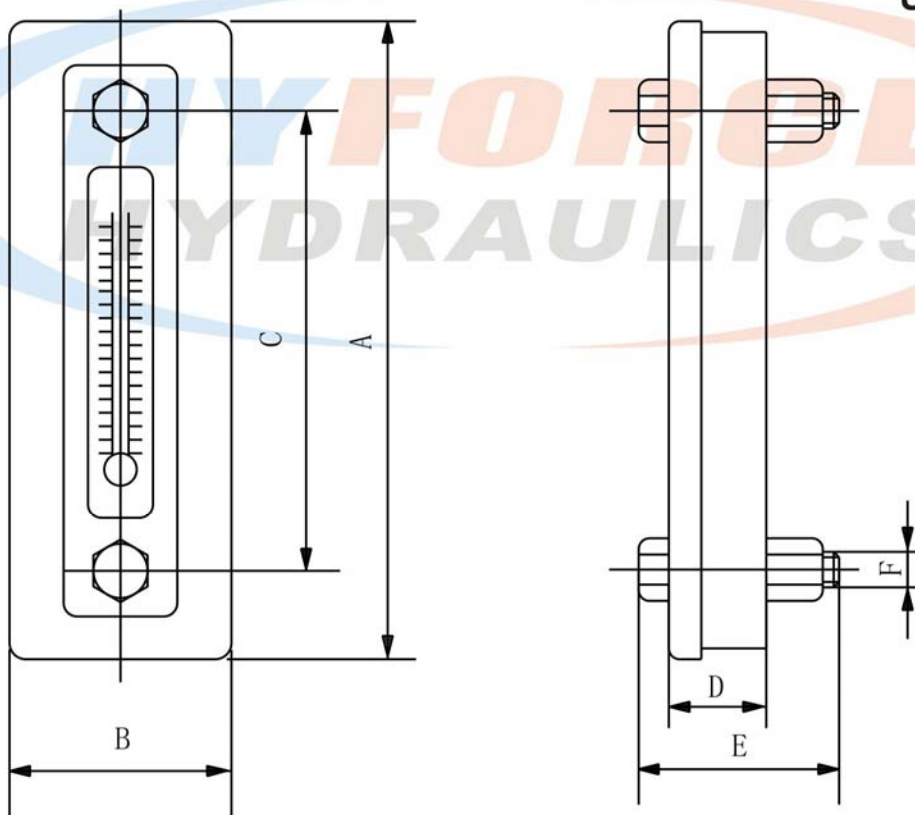
### LS Series Level Fluid Indicator with Thermometer

#### Symbol



#### Dimensions

Unit: mm



Model	A	B	C	D	E	F	Weight (kg)
LS-3"	118	41	80	18	37	M10	0.18
LS-5"	180	52	127	19.5	46	M12	0.33

A

B

C

D

E

F

G

H

I

J

K

L

M

N

O21

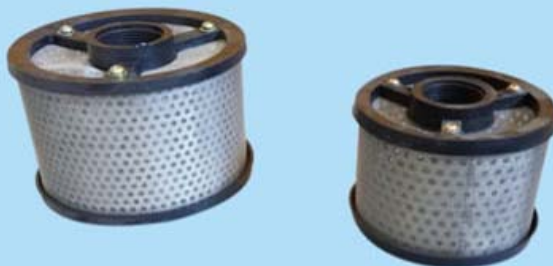
P



## Hydraulic Accessories Series

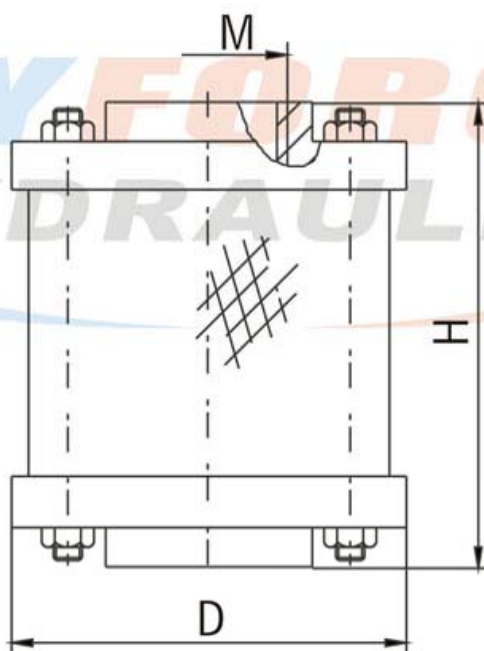
### HY37 Series Mesh Strainer

#### Symbol



#### Dimensions & technical data

Unit: mm



022

Model	Flow Rate (m/l)	H	D	M	Weight (kg)
HY37-50	50	87	105	M33×2	0.13
HY37-100	100	116	145	M42×2	0.22