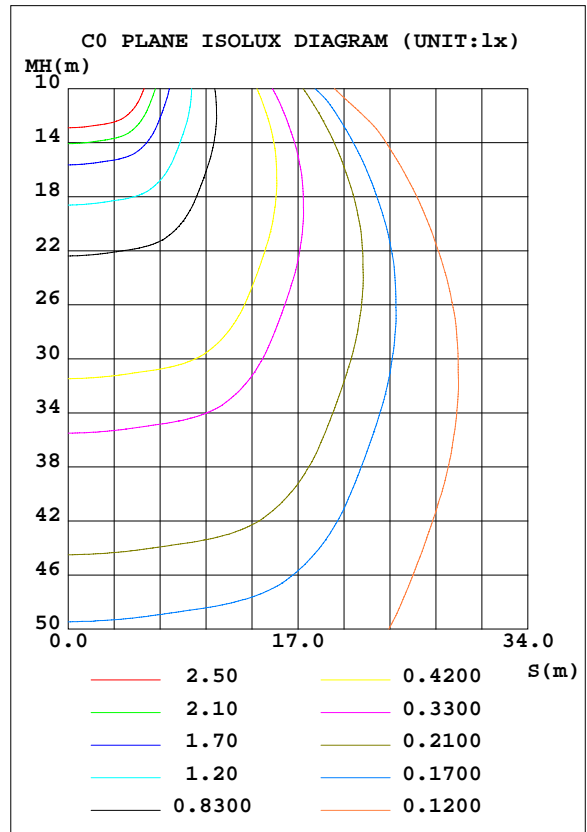
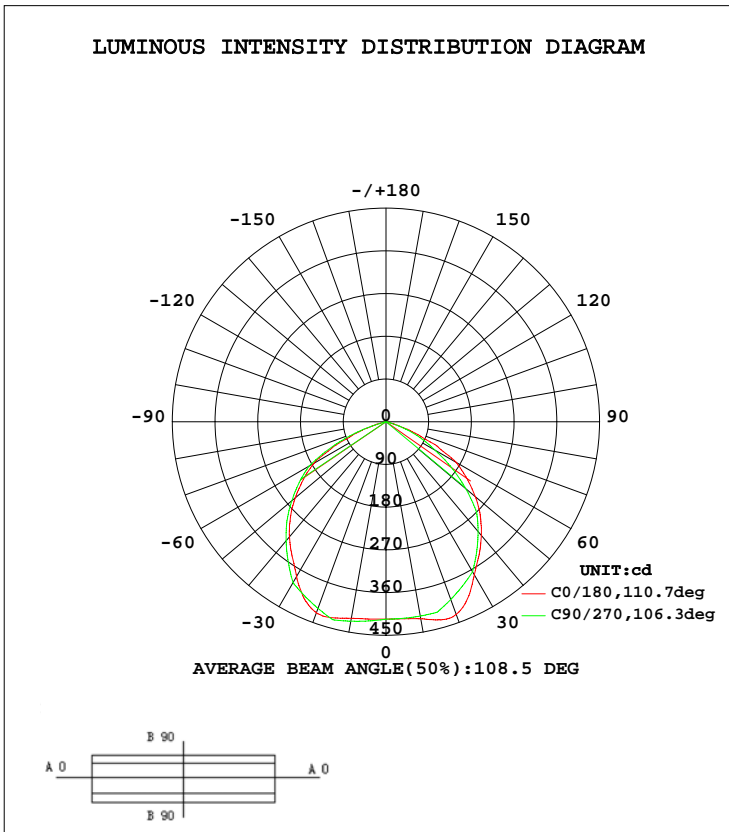


LUMINAIRE PHOTOMETRIC TEST REPORT

Test:U:220.1V I:0.0560A P:11.70W PF:0.9470 Lamp Flux:1118.44x1 lm		
NAME: LED FLOOD LIGHT	TYPE:IP65	WEIGHT:0.5
SPEC.:PHILIPS 3030	DIM.:	SERIAL No.:
MFR.: QINHAN LIGHTING	SUR.:	PROTECTION ANGLE:

DATA OF LAMP		PHOTOMETRIC DATA			
MODEL	QH-FLTG-10W	Imax(cd)	451.3	S/MH(C0/180)	1.31
NOMINAL POWER(W)	10	LOR(%)	100.0	S/MH(C90/270)	1.35
RATED VOLTAGE(V)	220	TOTAL FLUX(lm)	1118.4	$\eta$ UP, DN(C0-180)	0.0, 47.8
NOMINAL FLUX(lm)	1118.44	CIE CLASS	DIRECT	$\eta$ UP, DN(C180-360)	0.0, 52.2
LAMPS INSIDE	1	$\eta$ up(%)	0.0	CIBSE SHR NOM	1.25
TEST VOLTAGE(V)	220.2	$\eta$ down(%)	100.0	CIBSE SHR MAX	1.35



C Range: 0 - 360DEG  
 C Interval: 5.0DEG  
 Test Speed: HIGH  
 Temperature:25.3DEG  
 Operators:  
 Test Date:2016-01-29

$\gamma$  Range: 0 - 90DEG  
 $\gamma$  Interval: 0.5DEG  
 Test System:EVERFINE GO-2000B\_V1 SYSTEM V2.0.287  
 Humidity:65.0%  
 Test Distance:8.000m [K=1.0000]  
 Remarks:

ZONAL FLUX DIAGRAM

ZONAL FLUX DIAGRAM:

γ	C0	C45	C90	C135	C180	C225	C270	C315	γ	Φ zone	Φ total	lum, lamp
5	416.7	416.0	415.8	416.4	417.2	420.3	421.3	420.0	0- 5	9.974	9.974	0.89,0.89
10	421.4	417.4	415.6	417.5	420.6	424.7	426.6	425.9	5- 10	30.03	40.00	3.58,3.58
15	432.0	421.3	415.5	420.3	427.8	430.9	432.0	434.3	10- 15	50.33	90.34	8.08,8.08
20	432.0	427.0	398.6	425.6	428.4	438.7	418.5	445.8	15- 20	70.42	160.8	14.4,14.4
25	408.8	416.4	381.7	415.1	409.6	431.4	405.1	439.6	20- 25	88.14	248.9	22.3,22.3
30	372.5	392.7	364.8	392.4	376.8	412.9	391.6	416.5	25- 30	101.7	350.6	31.3,31.3
35	342.1	358.7	333.3	360.3	345.0	383.8	359.4	382.2	30- 35	110.4	461.0	41.2,41.2
40	312.7	323.5	301.8	324.9	316.4	350.6	327.3	346.8	35- 40	114.3	575.4	51.4,51.4
45	281.1	282.3	270.2	284.7	284.8	307.8	295.1	303.9	40- 45	114.1	689.5	61.6,61.6
50	245.8	243.1	219.5	245.6	249.6	267.3	259.1	263.7	45- 50	109.5	799.0	71.4,71.4
55	208.1	203.9	168.7	206.3	212.4	228.1	223.2	223.7	50- 55	99.94	898.9	80.4,80.4
60	169.8	151.3	118.0	153.5	175.3	185.5	187.2	182.3	55- 60	86.46	985.4	88.1,88.1
65	113.4	99.78	79.31	101.3	116.5	143.0	125.6	139.0	60- 65	67.60	1053	94.1,94.1
70	52.92	52.95	40.68	55.57	55.91	89.50	64.06	85.24	65- 70	43.25	1096	98,98
75	6.016	22.42	2.039	23.68	12.31	38.64	2.483	36.69	70- 75	18.98	1115	99.7,99.7
80	0.7537	0.5345	0	0.6833	0.7594	0.7412	0	0.6607	75- 80	3.015	1118	100,100
85	0.2729	0	0	0	0.3634	0	0	0	80- 85	0.1779	1118	100,100
90	0.0612	0	0	0	0.1545	0	0	0	85- 90	0.0202	1118	100,100
95									90- 95			
100									95-100			
105									100-105			
110									105-110			
115									110-115			
120									115-120			
125									120-125			
130									125-130			
135									130-135			
140									135-140			
145									140-145			
150									145-150			
155									150-155			
160									155-160			
165									160-165			
170									165-170			
175									170-175			
180									175-180			
DEG	LUMINOUS INTENSITY:cd								UNIT:lm			

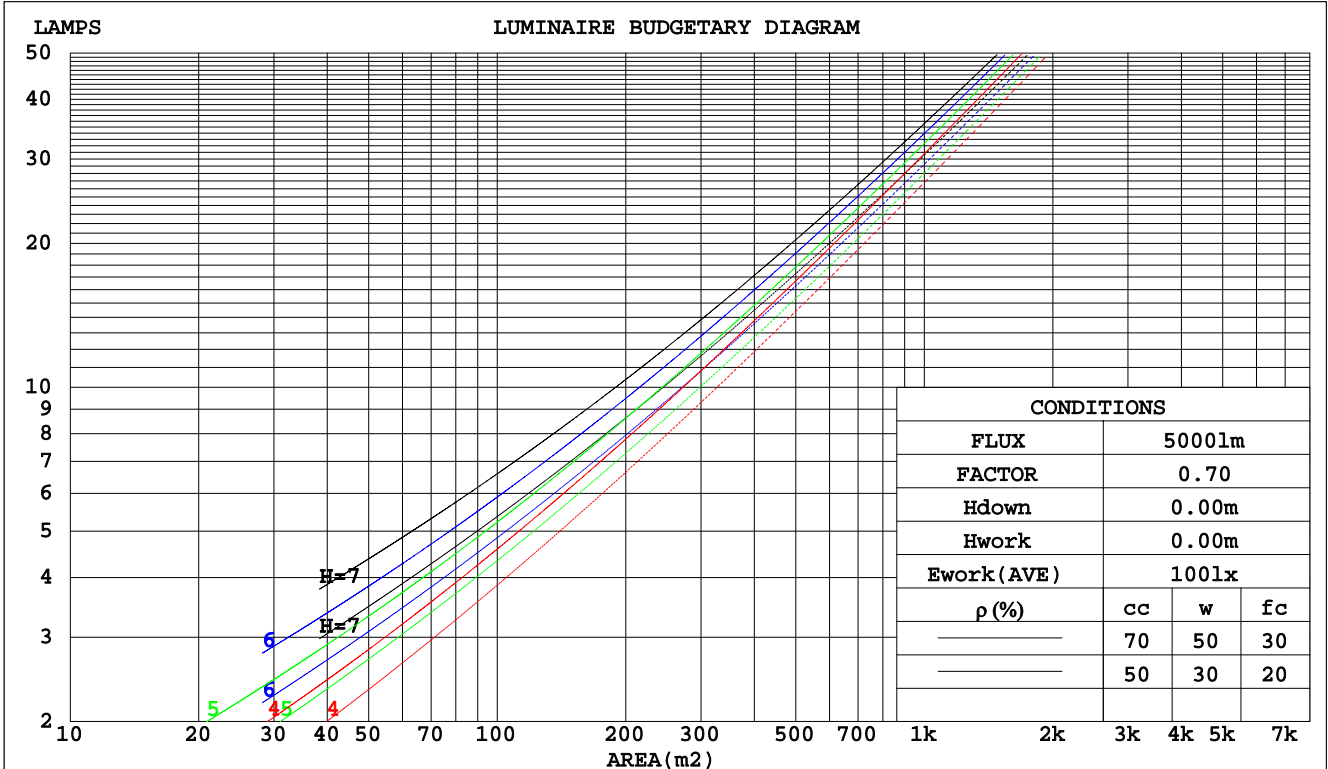
C Range: 0 - 360DEG  
 C Interval: 5.0DEG  
 Test Speed: HIGH  
 Temperature:25.3DEG  
 Operators:  
 Test Date:2016-01-29

γ Range: 0 - 90DEG  
 γ Interval: 0.5DEG  
 Test System:EVERFINE GO-2000B\_V1 SYSTEM V2.0.287  
 Humidity:65.0%  
 Test Distance:8.000m [K=1.0000]  
 Remarks:

CU AND LUMINAIRE BUDGETARY ESTIMATE DIAGRAM

Test:U:220.1V I:0.0560A P:11.70W PF:0.9470 Lamp Flux:1118.44x1 lm		
NAME: LED FLOOD LIGHT	TYPE:IP65	WEIGHT:0.5
SPEC.:PHILIPS 3030	DIM.:	SERIAL No.:
MFR.: QINHAN LIGHTING	SUR.:	PROTECTION ANGLE:

pcc	80%			70%			50%			30%			10%			0
pw	50%	30%	10%	50%	30%	10%	50%	30%	10%	50%	30%	10%	50%	30%	10%	0
pfc	20%			20%			20%			20%			20%			0
RCR	RCR:Room Cavity Ratio															
	Coefficients of Utilization(CU)															
0.0	1.19	1.19	1.19	1.16	1.16	1.16	1.11	1.11	1.11	1.06	1.06	1.06	1.02	1.02	1.02	1.00
1.0	1.07	1.03	.00	1.04	1.01	.98	1.00	.97	.95	.96	.94	.92	.93	.91	.89	.87
2.0	.94	.88	.83	.92	.87	.82	.89	.84	.80	.86	.82	.79	.83	.80	.77	.75
3.0	.84	.76	.70	.82	.75	.70	.79	.73	.69	.77	.72	.67	.74	.70	.66	.64
4.0	.75	.66	.60	.73	.66	.60	.71	.64	.59	.69	.63	.58	.66	.62	.57	.55
5.0	.67	.58	.52	.66	.58	.52	.64	.57	.51	.62	.56	.51	.60	.55	.50	.48
6.0	.60	.52	.46	.59	.51	.46	.58	.50	.45	.56	.50	.45	.54	.49	.44	.42
7.0	.55	.46	.40	.54	.46	.40	.52	.45	.40	.51	.45	.40	.50	.44	.40	.38
8.0	.50	.42	.36	.49	.42	.36	.48	.41	.36	.47	.40	.36	.46	.40	.35	.34
9.0	.46	.38	.33	.45	.38	.32	.44	.37	.32	.43	.37	.32	.42	.36	.32	.30
10.0	.42	.35	.30	.42	.34	.29	.41	.34	.29	.40	.34	.29	.39	.33	.29	.27



C Range: 0 - 360DEG  
 C Interval: 5.0DEG  
 Test Speed: HIGH  
 Temperature:25.3DEG  
 Operators:  
 Test Date:2016-01-29

γ Range: 0 - 90DEG  
 γ Interval: 0.5DEG  
 Test System:EVERFINE GO-2000B\_V1 SYSTEM V2.0.287  
 Humidity:65.0%  
 Test Distance:8.000m [K=1.0000]  
 Remarks:

WEC AND CCEC

Test:U:220.1V I:0.0560A P:11.70W PF:0.9470 Lamp Flux:1118.44x1 lm		
NAME: LED FLOOD LIGHT	TYPE:IP65	WEIGHT:0.5
SPEC.:PHILIPS 3030	DIM.:	SERIAL No.:
MFR.: QINHAN LIGHTING	SUR.:	PROTECTION ANGLE:

ρcc	80%			70%			50%			30%			10%			0
ρw	50%	30%	10%	50%	30%	10%	50%	30%	10%	50%	30%	10%	50%	30%	10%	0
ρfc	20%			20%			20%			20%			20%			0
RCR	RCR:Room Cavity Ratio						Wall Exitance Coefficients(WEC)									
0.0																
1.0	.259	.147	.047	.252	.144	.046	.239	.137	.044	.227	.131	.042	.216	.125	.040	
2.0	.255	.140	.043	.249	.137	.042	.237	.132	.041	.227	.127	.040	.217	.123	.039	
3.0	.243	.129	.039	.237	.127	.038	.227	.123	.037	.218	.119	.037	.209	.116	.036	
4.0	.229	.119	.035	.224	.117	.035	.215	.114	.034	.207	.111	.033	.199	.108	.033	
5.0	.215	.109	.032	.210	.108	.031	.202	.105	.031	.195	.103	.031	.188	.101	.030	
6.0	.201	.101	.029	.198	.100	.029	.191	.098	.028	.184	.096	.028	.178	.094	.028	
7.0	.189	.093	.026	.186	.092	.026	.179	.091	.026	.173	.089	.026	.168	.087	.026	
8.0	.178	.087	.024	.175	.086	.024	.169	.084	.024	.164	.083	.024	.159	.082	.024	
9.0	.167	.081	.023	.165	.080	.023	.160	.079	.022	.155	.078	.022	.150	.076	.022	
10.0	.158	.076	.021	.156	.075	.021	.151	.074	.021	.147	.073	.021	.143	.072	.021	

ρcc	80%			70%			50%			30%			10%			0
ρw	50%	30%	10%	50%	30%	10%	50%	30%	10%	50%	30%	10%	50%	30%	10%	0
ρfc	20%			20%			20%			20%			20%			0
RCR	RCR:Room Cavity Ratio						Ceiling Cavity Exitance Coefficients(CCEC)									
0.0	.190	.190	.190	.163	.163	.163	.111	.111	.111	.064	.064	.064	.020	.020	.020	
1.0	.177	.157	.138	.151	.134	.119	.103	.092	.082	.060	.054	.048	.019	.017	.015	
2.0	.167	.132	.102	.143	.114	.089	.098	.079	.062	.057	.046	.036	.018	.015	.012	
3.0	.159	.114	.078	.136	.098	.068	.094	.068	.048	.054	.040	.028	.017	.013	.009	
4.0	.152	.101	.061	.130	.087	.053	.090	.061	.038	.052	.035	.022	.017	.012	.007	
5.0	.145	.090	.050	.124	.078	.043	.086	.054	.030	.050	.032	.018	.016	.010	.006	
6.0	.138	.082	.041	.119	.071	.036	.082	.049	.025	.047	.029	.015	.015	.010	.005	
7.0	.132	.075	.035	.113	.065	.030	.078	.045	.021	.045	.027	.013	.015	.009	.004	
8.0	.126	.069	.030	.108	.060	.026	.075	.042	.018	.044	.025	.011	.014	.008	.004	
9.0	.120	.064	.026	.103	.055	.023	.072	.039	.016	.042	.023	.010	.014	.008	.003	
10.0	.115	.060	.023	.099	.052	.020	.069	.036	.014	.040	.022	.009	.013	.007	.003	

C Range: 0 - 360DEG  
 C Interval: 5.0DEG  
 Test Speed: HIGH  
 Temperature:25.3DEG  
 Operators:  
 Test Date:2016-01-29

γ Range: 0 - 90DEG  
 γ Interval: 0.5DEG  
 Test System:EVERFINE GO-2000B\_V1 SYSTEM V2.0.287  
 Humidity:65.0%  
 Test Distance:8.000m [K=1.0000]  
 Remarks:

UGR(Unified Glare Rating) Table

Test:U:220.1V I:0.0560A P:11.70W PF:0.9470 Lamp Flux:1118.44x1 lm										
NAME: LED FLOOD LIGHT					TYPE:IP65			WEIGHT:0.5		
SPEC.:PHILIPS 3030					DIM.:			SERIAL No.:		
MFR.: QINHAN LIGHTING					SUR.:			PROTECTION ANGLE:		
ceiling/cavity	0.7	0.7	0.5	0.5	0.3	0.7	0.7	0.5	0.5	0.3
walls	0.5	0.3	0.5	0.3	0.3	0.5	0.3	0.5	0.3	0.3
working plane	0.2	0.2	0.2	0.2	0.2	0.2	0.2	0.2	0.2	0.2
Room dimensions	Viewed crosswise					Viewed endwise				
x = 2H y = 2H	17.2	18.7	17.5	18.8	19.0	16.2	17.7	16.5	17.9	18.1
3H	17.7	19.0	18.0	19.3	19.5	16.7	18.0	17.0	18.2	18.4
4H	17.7	18.9	18.0	19.1	19.4	16.6	17.8	16.9	18.1	18.3
6H	17.6	18.7	17.9	19.0	19.3	16.5	17.6	16.8	17.9	18.2
8H	17.5	18.6	17.8	18.9	19.2	16.4	17.6	16.8	17.8	18.1
12H	17.5	18.5	17.8	18.8	19.1	16.4	17.5	16.7	17.7	18.0
4H 2H	17.5	18.7	17.8	19.0	19.2	16.7	17.9	17.0	18.2	18.4
3H	18.1	19.1	18.4	19.4	19.7	17.2	18.3	17.5	18.6	18.9
4H	18.0	19.0	18.4	19.3	19.6	17.2	18.1	17.5	18.4	18.8
6H	17.9	18.8	18.3	19.1	19.5	17.1	17.9	17.5	18.3	18.6
8H	17.9	18.7	18.3	19.0	19.4	17.0	17.8	17.4	18.2	18.5
12H	17.9	18.6	18.3	18.9	19.3	17.0	17.7	17.4	18.1	18.5
8H 4H	18.0	18.7	18.4	19.1	19.5	17.1	17.9	17.5	18.2	18.6
6H	17.9	18.5	18.3	18.9	19.3	17.0	17.7	17.5	18.1	18.5
8H	17.8	18.4	18.3	18.8	19.3	17.0	17.5	17.4	18.0	18.4
12H	17.8	18.3	18.3	18.7	19.2	16.9	17.4	17.4	17.9	18.3
12H 4H	17.9	18.6	18.3	19.0	19.4	17.1	17.8	17.5	18.2	18.6
6H	17.8	18.4	18.3	18.8	19.3	17.0	17.5	17.4	18.0	18.4
8H	17.8	18.3	18.3	18.7	19.2	16.9	17.4	17.4	17.9	18.3
Variations with the observer position at spacings:										
S = 1.0H	+ 0.4 / - 0.5					+ 0.6 / - 0.7				
1.5H	+ 0.5 / - 0.9					+ 0.4 / - 0.7				
2.0H	+ 0.6 / - 0.8					+ 0.9 / - 1.5				

CIE Pub.117 Corrected 1118 lm Total Lamp Luminous Flux.(8log(F/F0) = 0.4)

C Range: 0 - 360DEG  
 C Interval: 5.0DEG  
 Test Speed: HIGH  
 Temperature:25.3DEG  
 Operators:  
 Test Date:2016-01-29

γ Range: 0 - 90DEG  
 γ Interval: 0.5DEG  
 Test System:EVERFINE GO-2000B\_V1 SYSTEM V2.0.287  
 Humidity:65.0%  
 Test Distance:8.000m [K=1.0000]  
 Remarks:

UTILIZATION FACTORS TABLE

Test:U:220.1V I:0.0560A P:11.70W PF:0.9470 Lamp Flux:1118.44x1 lm		
NAME: LED FLOOD LIGHT	TYPE:IP65	WEIGHT:0.5
SPEC.:PHILIPS 3030	DIM.:	SERIAL No.:
MFR.: QINHAN LIGHTING	SUR.:	PROTECTION ANGLE:

REFLECTANCE										
Ceiling	0.8	0.8	0.8	0.7	0.7	0.7	0.5	0.5	0.5	0
Walls	0.7	0.5	0.3	0.7	0.5	0.3	0.7	0.5	0.3	0
Working plane	0.2	0.2	0.2	0.2	0.2	0.2	0.2	0.2	0.2	0
ROOM INDEX	UTILIZATION FACTORS(PERCENT) $k(RI) \times RCR = 5$									
k = 0.60	61	50	43	60	50	43	59	49	43	37
0.80	71	61	54	70	60	54	69	59	53	47
1.00	80	70	64	79	70	63	77	71	63	56
1.25	87	78	72	86	77	71	83	76	70	64
1.50	92	84	77	91	83	77	88	81	76	69
2.00	99	91	86	97	90	85	94	88	83	76
2.50	102	95	90	100	94	89	97	92	87	80
3.00	105	99	95	103	98	94	99	95	91	84
4.00	109	104	100	106	102	99	102	99	96	88
5.00	111	107	103	108	105	102	104	101	99	90
ROOM INDEX	UF(total)									Direct
According to DIN EN 13032-2 2004			Suspended				SHRNOM = 1.25			

C Range: 0 - 360DEG  
 C Interval: 5.0DEG  
 Test Speed: HIGH  
 Temperature:25.3DEG  
 Operators:  
 Test Date:2016-01-29

$\gamma$  Range: 0 - 90DEG  
 $\gamma$  Interval: 0.5DEG  
 Test System:EVERFINE GO-2000B\_V1 SYSTEM V2.0.287  
 Humidity:65.0%  
 Test Distance:8.000m [K=1.0000]  
 Remarks:

ISOCANDELA DIAGRAM

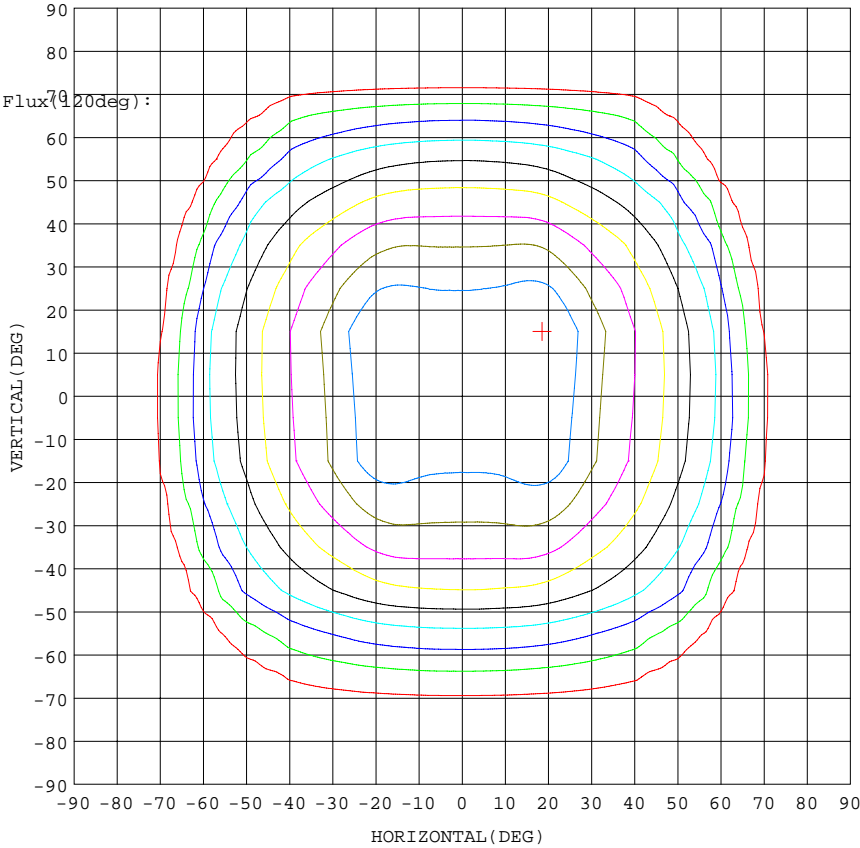
Test:U:220.1V I:0.0560A P:11.70W PF:0.9470 Lamp Flux:1118.44x1 lm		
NAME: LED FLOOD LIGHT	TYPE:IP65	WEIGHT:0.5
SPEC.:PHILIPS 3030	DIM.:	SERIAL No.:
MFR.: QINHAN LIGHTING	SUR.:	PROTECTION ANGLE:

Conical surface Flux(90deg):

689.5 lm  
 %lum = 61.6%  
 %lamp = 61.6%

Conical surface Flux(70deg):

985.39 lm  
 %lum = 88.1%  
 %lamp = 88.1%



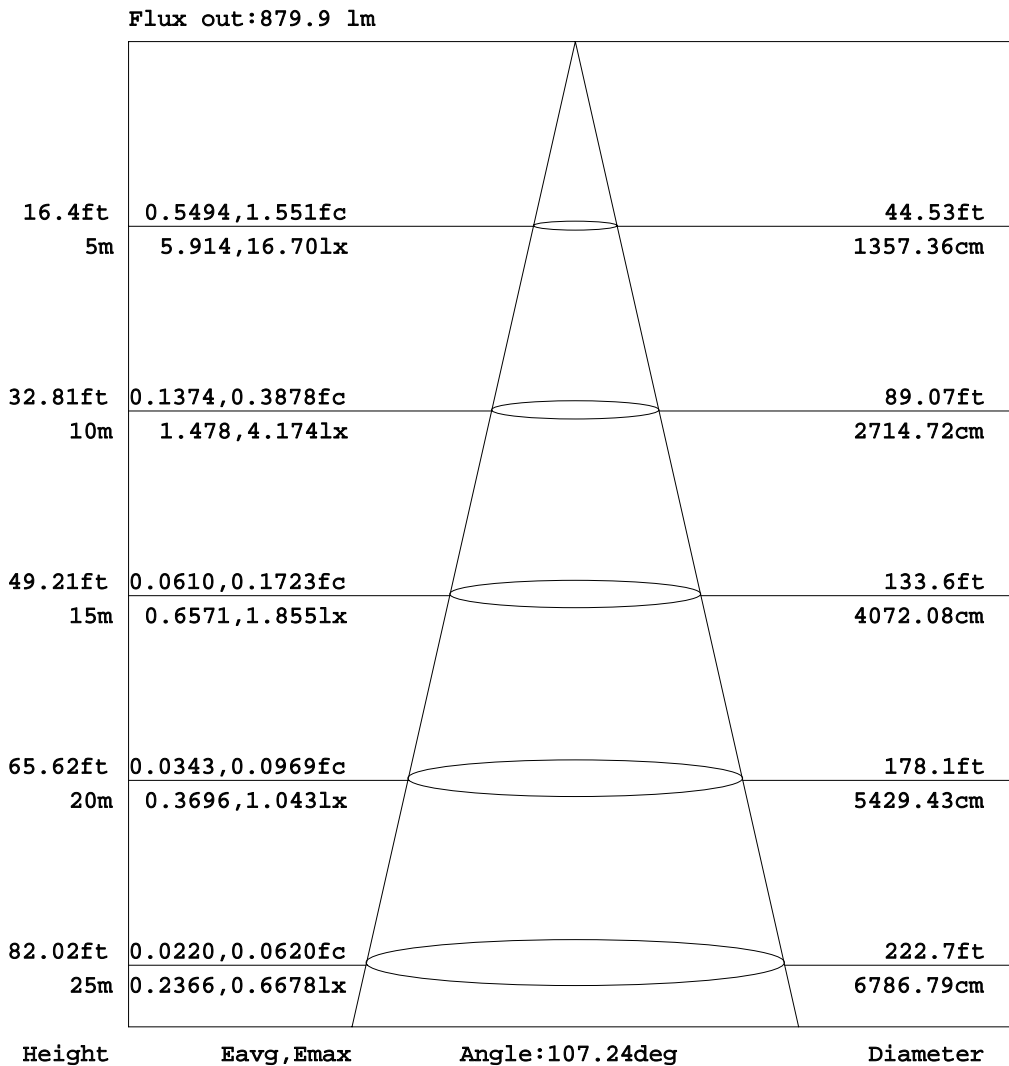
Imax: 451.6 (H18.5, V15.0)  
 (At: C=320.0, Gamma=22.5)  
 UNIT: cd

C Range: 0 - 360DEG  
 C Interval: 5.0DEG  
 Test Speed: HIGH  
 Temperature: 25.3DEG  
 Operators:  
 Test Date: 2016-01-29

γ Range: 0 - 90DEG  
 γ Interval: 0.5DEG  
 Test System: EVERFINE GO-2000B\_V1 SYSTEM V2.0.287  
 Humidity: 65.0%  
 Test Distance: 8.000m [K=1.0000]  
 Remarks:

AAI Figure

Test:U:220.1V I:0.0560A P:11.70W PF:0.9470 Lamp Flux:1118.44x1 lm		
NAME: LED FLOOD LIGHT	TYPE:IP65	WEIGHT:0.5
SPEC.:PHILIPS 3030	DIM.:	SERIAL No.:
MFR.: QINHAN LIGHTING	SUR.:	PROTECTION ANGLE:



Note:The Curves indicate the illuminated area and the average illumination when the luminaire is at different distance.

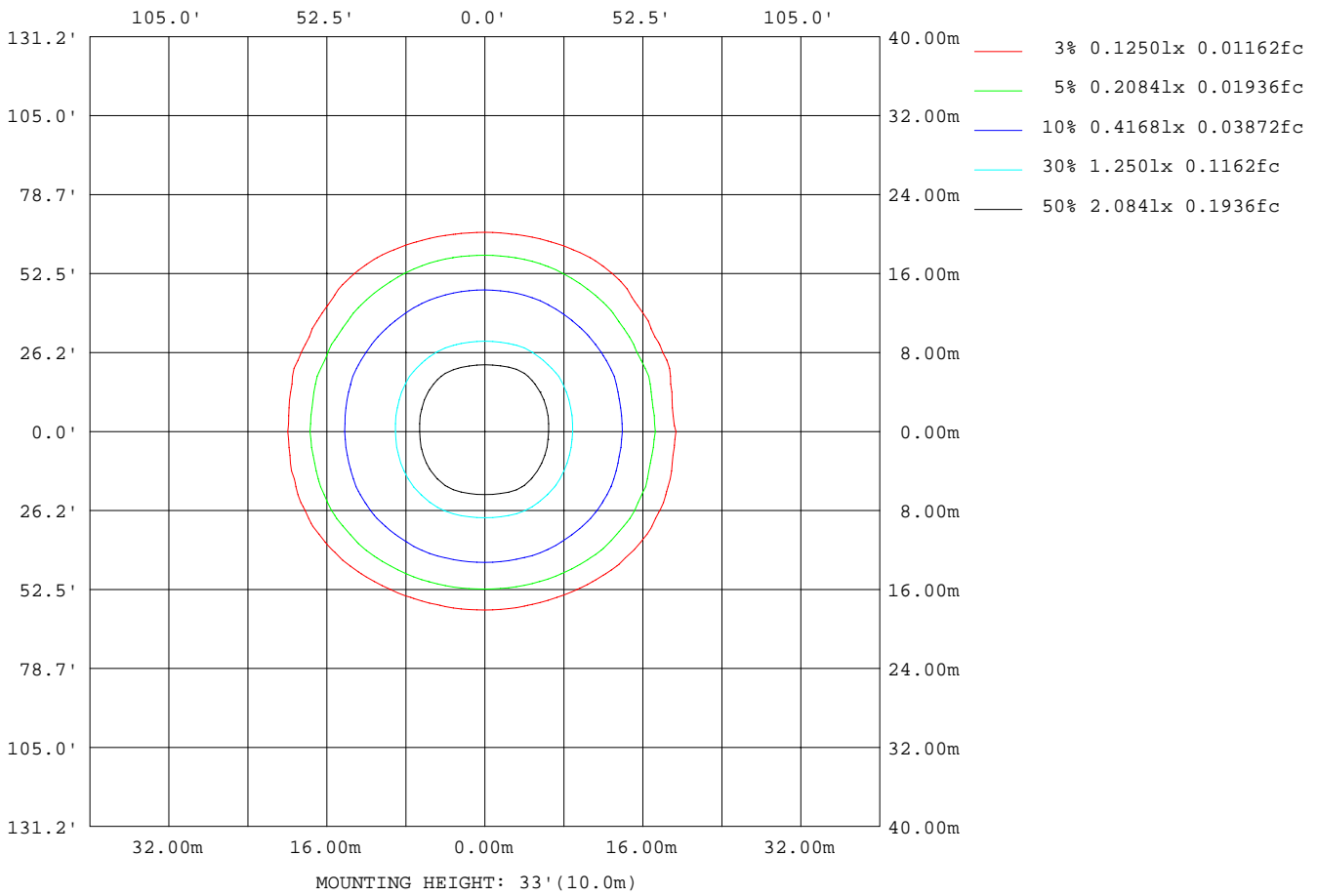
C Range: 0 - 360DEG  
 C Interval: 5.0DEG  
 Test Speed: HIGH  
 Temperature:25.3DEG  
 Operators:  
 Test Date:2016-01-29

γ Range: 0 - 90DEG  
 γ Interval: 0.5DEG  
 Test System:EVERFINE GO-2000B\_V1 SYSTEM V2.0.287  
 Humidity:65.0%  
 Test Distance:8.000m [K=1.0000]  
 Remarks:



ISOLUX DIAGRAM

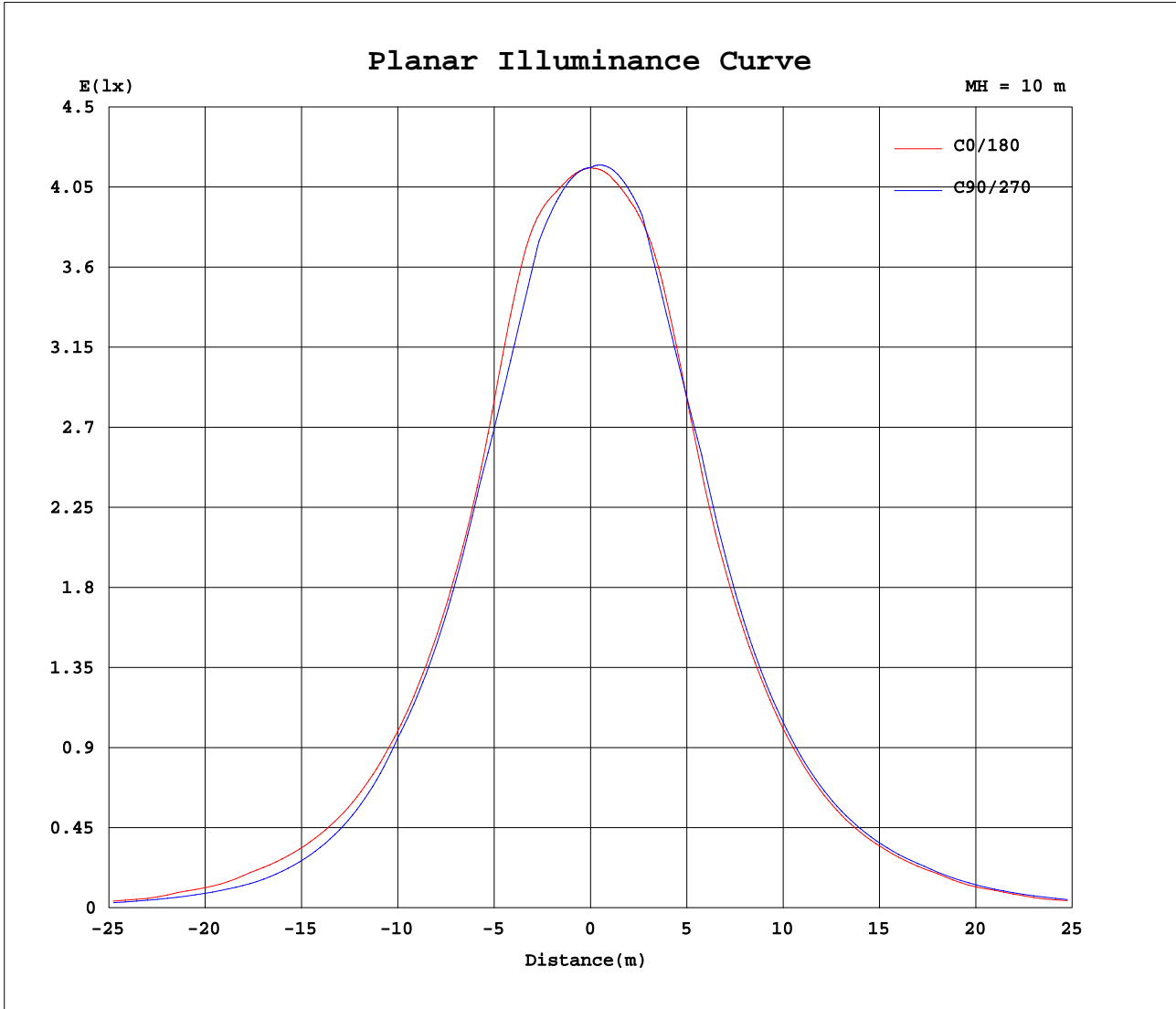
Test:U:220.1V I:0.0560A P:11.70W PF:0.9470 Lamp Flux:1118.44x1 lm		
NAME: LED FLOOD LIGHT	TYPE:IP65	WEIGHT:0.5
SPEC.:PHILIPS 3030	DIM.:	SERIAL No.:
MFR.: QINHAN LIGHTING	SUR.:	PROTECTION ANGLE:



C Range: 0 - 360DEG  
 C Interval: 5.0DEG  
 Test Speed: HIGH  
 Temperature:25.3DEG  
 Operators:  
 Test Date:2016-01-29

γ Range: 0 - 90DEG  
 γ Interval: 0.5DEG  
 Test System:EVERFINE GO-2000B\_V1 SYSTEM V2.0.287  
 Humidity:65.0%  
 Test Distance:8.000m [K=1.0000]  
 Remarks:

Planar Illuminance Curve



C Range: 0 - 360DEG  
 C Interval: 5.0DEG  
 Test Speed: HIGH  
 Temperature: 25.3DEG  
 Operators:  
 Test Date: 2016-01-29

γ Range: 0 - 90DEG  
 γ Interval: 0.5DEG  
 Test System: EVERFINE GO-2000B\_V1 SYSTEM V2.0.287  
 Humidity: 65.0%  
 Test Distance: 8.000m [K=1.0000]  
 Remarks:

LUMINOUS DISTRIBUTION INTENSITY DATA

Test:U:220.1V I:0.0560A P:11.70W PF:0.9470 Lamp Flux:1118.44x1 lm		
NAME: LED FLOOD LIGHT	TYPE:IP65	WEIGHT:0.5
SPEC.:PHILIPS 3030	DIM.:	SERIAL No.:
MFR.: QINHAN LIGHTING	SUR.:	PROTECTION ANGLE:

Table--1

UNIT: cd

C(DEG) \ γ (DEG)	0	5	10	15	20	25	30	35	40	45	50	55	60	65	70	75	80	85	90
0	416	416	416	416	416	416	416	416	416	416	416	416	416	416	416	416	416	416	416
5	417	417	417	417	416	416	416	416	416	416	416	416	416	416	416	416	416	416	416
10	421	421	421	421	420	420	419	418	418	417	417	417	416	416	416	416	416	416	416
15	432	432	431	430	429	428	426	425	423	421	420	418	417	416	416	416	416	416	416
20	432	432	432	432	432	432	432	431	429	427	422	416	411	407	403	401	399	399	399
25	409	408	409	411	414	418	423	427	422	416	411	404	398	393	388	385	383	382	382
30	372	372	373	376	381	387	391	392	393	393	391	387	383	378	373	369	366	365	365
35	342	341	342	345	350	352	352	353	356	359	362	363	359	353	346	340	336	334	333
40	313	311	312	315	318	317	318	319	321	324	323	322	321	317	312	307	304	302	302
45	281	279	280	283	282	283	285	288	285	282	281	281	281	280	277	274	271	271	270
50	246	243	244	245	245	247	250	247	245	243	242	242	239	235	231	226	222	220	219
55	208	205	208	206	207	208	206	205	205	204	197	191	186	182	178	174	171	169	169
60	170	165	165	164	166	162	164	165	157	151	145	139	134	130	126	122	120	118	118
65	113	106	104	112	105	113	113	108	101	99.8	93.2	88.7	87.2	85.3	83.2	81.7	80.6	79.6	79.3
70	52.9	51.3	48.6	49.0	53.1	52.2	54.3	50.3	48.3	53.0	55.4	53.2	50.8	48.1	45.6	43.6	42.1	41.0	40.7
75	6.02	5.16	6.87	6.86	13.2	11.7	12.4	17.6	21.2	22.4	22.5	18.7	14.9	11.3	8.16	5.56	3.66	2.42	2.04
80	0.75	0.71	0.75	0.77	0.76	0.79	3.01	3.68	1.47	0.53	0.47	0.42	0.36	0.29	0.21	0.13	0.06	0.01	0.00
85	0.27	0.35	0.40	0.41	0.35	0.15	0.00	0.00	0.00	0.00	0.00	0.00	0.00	0.00	0.00	0.00	0.00	0.00	0.00
90	0.06	0.00	0.00	0.00	0.00	0.00	0.00	0.00	0.00	0.00	0.00	0.00	0.00	0.00	0.00	0.00	0.00	0.00	0.00

C Range: 0 - 360DEG  
 C Interval: 5.0DEG  
 Test Speed: HIGH  
 Temperature:25.3DEG  
 Operators:  
 Test Date:2016-01-29

γ Range: 0 - 90DEG  
 γ Interval: 0.5DEG  
 Test System:EVERFINE GO-2000B\_V1 SYSTEM V2.0.287  
 Humidity:65.0%  
 Test Distance:8.000m [K=1.0000]  
 Remarks:

LUMINOUS DISTRIBUTION INTENSITY DATA

Test:U:220.1V I:0.0560A P:11.70W PF:0.9470 Lamp Flux:1118.44x1 lm		
NAME: LED FLOOD LIGHT	TYPE:IP65	WEIGHT:0.5
SPEC.:PHILIPS 3030	DIM.:	SERIAL No.:
MFR.: QINHAN LIGHTING	SUR.:	PROTECTION ANGLE:

Table--2

UNIT: cd

C( DEG) γ (DEG)	95	100	105	110	115	120	125	130	135	140	145	150	155	160	165	170	175	180	185
0	416	416	416	416	416	416	416	416	416	416	416	416	416	416	416	416	416	416	416
5	416	416	416	416	416	416	416	416	416	417	417	417	417	417	417	417	417	417	418
10	416	416	416	416	416	417	417	417	417	418	418	419	419	420	420	420	421	421	421
15	416	416	416	416	417	417	418	419	420	422	423	424	425	426	427	427	428	428	429
20	399	400	401	404	407	411	415	421	426	427	429	429	429	429	429	429	428	428	430
25	382	383	385	388	392	397	403	409	415	421	427	424	420	416	413	410	409	410	411
30	365	366	369	372	376	381	386	389	392	394	395	396	393	387	382	379	377	377	379
35	334	336	340	345	351	358	361	361	360	359	358	357	358	356	350	347	345	345	347
40	302	304	307	312	317	321	323	324	325	325	323	322	322	324	321	317	316	316	318
45	271	272	274	277	280	283	283	283	285	288	291	289	287	288	290	285	283	285	286
50	220	223	226	231	236	241	244	244	246	247	250	252	250	250	251	250	248	250	251
55	169	172	175	179	184	188	193	199	206	208	209	210	212	211	211	213	211	212	213
60	119	121	123	126	131	135	140	147	153	161	169	168	169	170	170	172	173	175	175
65	79.8	81.0	82.0	83.8	86.1	87.7	90.0	95.0	101	103	111	121	118	111	118	111	118	117	111
70	41.2	42.3	43.8	46.0	48.7	51.2	54.2	56.5	55.6	51.1	53.8	58.6	55.2	57.2	54.6	57.0	56.3	55.9	52.5
75	2.47	3.72	5.69	8.35	11.6	15.2	19.2	23.0	23.7	22.8	19.2	14.9	14.0	15.6	10.8	14.9	13.8	12.3	10.6
80	0.02	0.06	0.14	0.23	0.33	0.43	0.52	0.60	0.68	1.60	4.17	3.78	1.20	0.84	0.86	0.81	0.76	0.76	0.75
85	0.00	0.00	0.00	0.00	0.00	0.00	0.00	0.00	0.00	0.00	0.00	0.00	0.16	0.38	0.42	0.44	0.42	0.36	0.36
90	0.00	0.00	0.00	0.00	0.00	0.00	0.00	0.00	0.00	0.00	0.00	0.00	0.00	0.00	0.00	0.00	0.00	0.15	0.00

C Range: 0 - 360DEG	γ Range: 0 - 90DEG
C Interval: 5.0DEG	γ Interval: 0.5DEG
Test Speed: HIGH	Test System:EVERFINE GO-2000B_V1 SYSTEM V2.0.287
Temperature:25.3DEG	Humidity:65.0%
Operators:	Test Distance:8.000m [K=1.0000]
Test Date:2016-01-29	Remarks:

LUMINOUS DISTRIBUTION INTENSITY DATA

Test:U:220.1V I:0.0560A P:11.70W PF:0.9470 Lamp Flux:1118.44x1 lm		
NAME: LED FLOOD LIGHT	TYPE:IP65	WEIGHT:0.5
SPEC.:PHILIPS 3030	DIM.:	SERIAL No.:
MFR.: QINHAN LIGHTING	SUR.:	PROTECTION ANGLE:

Table--3

UNIT: cd

C( DEG) γ (DEG)	190	195	200	205	210	215	220	225	230	235	240	245	250	255	260	265	270	275	280
0	416	416	416	416	416	416	416	416	416	416	416	416	416	416	416	416	416	416	416
5	418	418	419	419	419	420	420	420	420	421	421	421	421	421	421	421	421	421	421
10	422	423	423	423	424	424	424	425	425	425	426	426	426	426	427	427	427	427	427
15	430	430	431	431	431	431	431	431	430	430	430	431	431	432	432	432	432	432	432
20	432	434	436	437	438	439	439	439	436	431	427	424	422	420	419	419	419	419	420
25	414	418	423	430	436	440	436	431	427	422	417	413	410	407	406	405	405	406	407
30	383	389	396	405	410	411	413	413	411	409	406	402	398	395	393	392	392	392	394
35	351	357	365	371	373	376	380	384	388	389	385	379	372	366	362	360	359	360	363
40	322	328	335	336	338	342	347	351	350	350	347	343	338	333	330	328	327	328	330
45	290	298	299	301	307	313	309	308	308	308	308	306	303	300	297	295	295	295	297
50	256	260	261	265	269	270	269	267	267	268	268	268	265	263	261	259	259	259	260
55	219	220	224	228	226	227	228	228	227	226	227	227	227	225	224	223	223	223	224
60	178	179	182	178	184	187	184	186	186	186	187	187	187	187	187	187	187	187	187
65	110	115	124	125	127	130	133	143	145	145	141	137	133	130	128	126	126	126	127
70	54.5	59.7	61.3	66.0	68.8	72.7	76.5	89.5	92.1	87.2	81.9	77.2	72.9	69.2	66.4	64.6	64.1	64.6	66.2
75	10.8	13.5	18.5	14.8	22.3	32.2	34.9	38.6	37.5	30.8	24.1	18.1	12.8	8.41	5.16	3.18	2.48	3.14	5.06
80	0.75	0.79	0.78	0.89	6.11	6.09	2.17	0.74	0.73	0.66	0.56	0.43	0.29	0.17	0.08	0.02	0.00	0.02	0.07
85	0.36	0.35	0.31	0.15	0.00	0.00	0.00	0.00	0.00	0.00	0.00	0.00	0.00	0.00	0.00	0.00	0.00	0.00	0.00
90	0.00	0.00	0.00	0.00	0.00	0.00	0.00	0.00	0.00	0.00	0.00	0.00	0.00	0.00	0.00	0.00	0.00	0.00	0.00

C Range: 0 - 360DEG  
 C Interval: 5.0DEG  
 Test Speed: HIGH  
 Temperature:25.3DEG  
 Operators:  
 Test Date:2016-01-29

γ Range: 0 - 90DEG  
 γ Interval: 0.5DEG  
 Test System:EVERFINE GO-2000B\_V1 SYSTEM V2.0.287  
 Humidity:65.0%  
 Test Distance:8.000m [K=1.0000]  
 Remarks:

LUMINOUS DISTRIBUTION INTENSITY DATA

Test:U:220.1V I:0.0560A P:11.70W PF:0.9470 Lamp Flux:1118.44x1 lm		
NAME: LED FLOOD LIGHT	TYPE:IP65	WEIGHT:0.5
SPEC.:PHILIPS 3030	DIM.:	SERIAL No.:
MFR.: QINHAN LIGHTING	SUR.:	PROTECTION ANGLE:

Table--4

UNIT: cd

C( DEG) γ (DEG)	285	290	295	300	305	310	315	320	325	330	335	340	345	350	355				
0	416	416	416	416	416	416	416	416	416	416	416	416	416	416	416				
5	421	421	421	421	420	420	420	420	419	419	419	418	418	418	417				
10	427	426	426	426	426	426	426	426	425	425	425	424	424	423	422				
15	432	432	433	433	433	434	434	435	436	436	436	436	435	435	433				
20	421	424	427	431	436	442	446	447	447	446	445	442	439	437	434				
25	409	412	416	422	428	434	440	444	447	440	432	425	419	414	411				
30	396	400	406	411	414	417	417	414	411	408	402	392	385	379	375				
35	367	374	382	389	392	388	382	377	372	368	367	362	354	348	344				
40	334	340	345	349	349	347	347	343	339	335	332	330	324	318	314				
45	299	303	307	307	305	304	304	306	310	303	297	294	292	285	282				
50	262	265	266	265	264	263	264	265	265	266	261	256	254	249	246				
55	225	226	226	224	223	223	224	224	222	222	223	218	214	212	208				
60	187	186	186	184	184	183	182	180	182	178	172	177	173	171	168				
65	130	132	136	139	143	143	139	128	127	120	116	114	108	101	105				
70	68.9	72.4	76.4	81.2	86.1	91.0	85.2	71.6	65.3	61.7	54.9	52.6	52.8	49.1	46.1				
75	8.27	12.6	17.7	23.8	30.3	36.8	36.7	34.3	27.3	15.7	11.0	11.9	4.53	8.89	5.58				
80	0.16	0.28	0.39	0.51	0.60	0.64	0.66	2.07	4.69	3.44	0.79	0.73	0.74	0.74	0.75				
85	0.00	0.00	0.00	0.00	0.00	0.00	0.00	0.00	0.00	0.00	0.13	0.27	0.31	0.29	0.30				
90	0.00	0.00	0.00	0.00	0.00	0.00	0.00	0.00	0.00	0.00	0.00	0.00	0.00	0.00	0.00				

C Range: 0 - 360DEG  
 C Interval: 5.0DEG  
 Test Speed: HIGH  
 Temperature:25.3DEG  
 Operators:  
 Test Date:2016-01-29

γ Range: 0 - 90DEG  
 γ Interval: 0.5DEG  
 Test System:EVERFINE GO-2000B\_V1 SYSTEM V2.0.287  
 Humidity:65.0%  
 Test Distance:8.000m [K=1.0000]  
 Remarks: