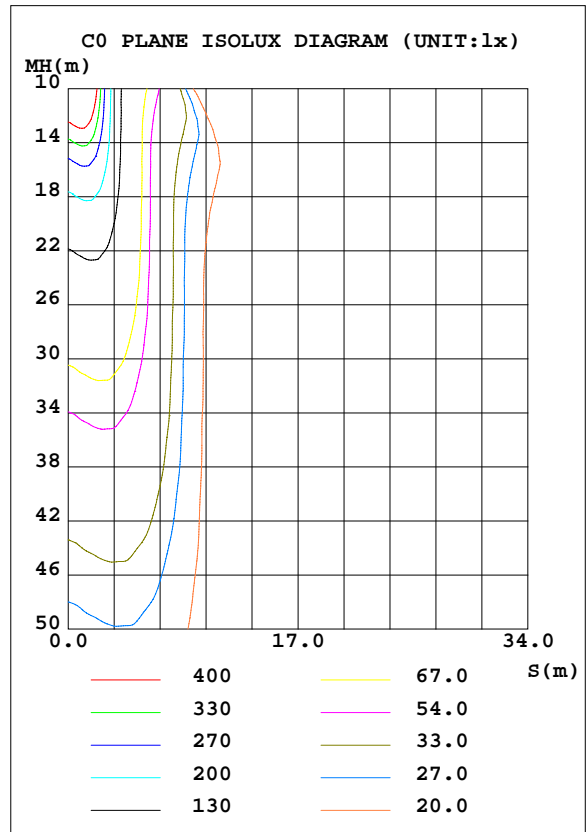
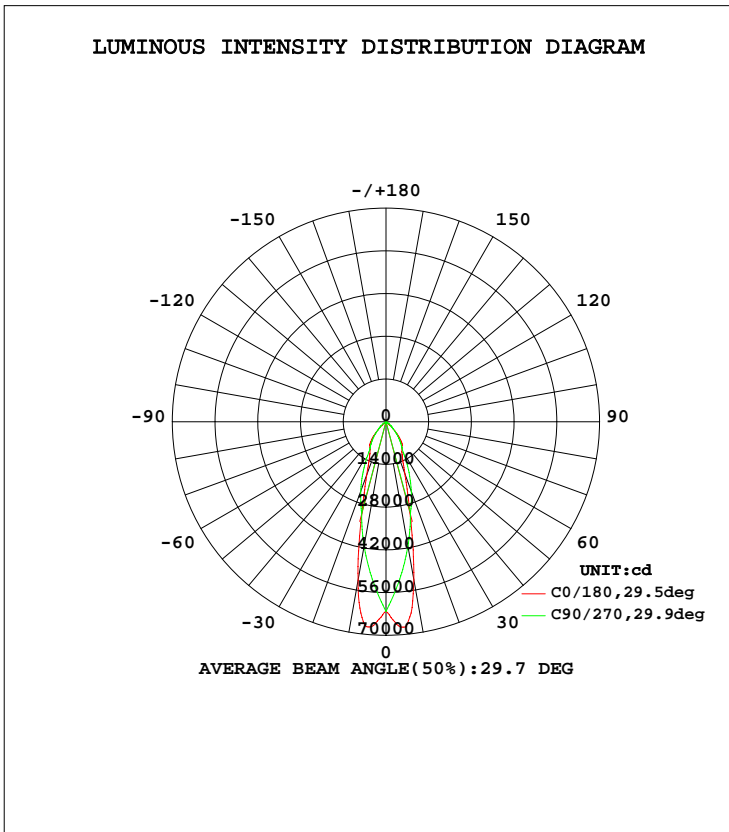


LUMINAIRE PHOTOMETRIC TEST REPORT

Test:U:220.1V I:1.390A P:297.0W PF:0.9700 Lamp Flux:28967.8x1 lm		
NAME: LED HIGH BAY LIGHT	TYPE:	WEIGHT:4
SPEC.:CREE XTE	DIM.:	SERIAL No.:
MFR.: QINHAN LIGHTING	SUR.:	PROTECTION ANGLE:

DATA OF LAMP		PHOTOMETRIC DATA Eff: 97.53 lm/W			
MODEL	QH-HBZSL-300W	Imax(cd)	67575	S/MH(C0/180)	0.50
NOMINAL POWER(W)	300	LOR(%)	100.0	S/MH(C90/270)	0.49
RATED VOLTAGE(V)	220	TOTAL FLUX(lm)	28968	$\eta$ UP, DN(C0-180)	0.0, 49.9
NOMINAL FLUX(lm)	28967.8	CIE CLASS	DIRECT	$\eta$ UP, DN(C180-360)	0.0, 50.1
LAMPS INSIDE	1	$\eta$ up(%)	0.0	CIBSE SHR NOM	0.50
TEST VOLTAGE(V)	220.2	$\eta$ down(%)	100.0	CIBSE SHR MAX	0.50



C Range: 0 - 360DEG  
 C Interval: 5.0DEG  
 Test Speed: HIGH  
 Temperature:25.3DEG  
 Operators:  
 Test Date:2015-03-14

$\gamma$  Range: 0 - 90DEG  
 $\gamma$  Interval: 0.5DEG  
 Test System:EVERFINE GO-2000B\_V1 SYSTEM V2.0.287  
 Humidity:65.0%  
 Test Distance:8.000m [K=1.0000]  
 Remarks: 反光罩: 25度

ZONAL FLUX DIAGRAM

ZONAL FLUX DIAGRAM:

γ	C0	C45	C90	C135	C180	C225	C270	C315	γ	Φ zone	Φ total	lum, lamp
5	6758	5821	5178	5813	6750	5815	5175	5813	0- 5	1436	1436	4.96,4.96
10	5259	4620	4142	4632	5279	4651	4135	4617	5- 10	3761	5197	17.9,17.9
15	3022	3010	3105	3024	3036	3054	3095	2992	10- 15	4427	9624	33.2,33.2
20	1816	1885	2431	1889	1845	1919	2420	1870	15- 20	3969	13593	46.9,46.9
25	1274	1390	1756	1398	1284	1412	1746	1384	20- 25	3549	17142	59.2,59.2
30	1045	1108	1082	1110	1047	1117	1072	1110	25- 30	3183	20325	70.2,70.2
35	926.9	898.4	834.7	892.3	926.2	903.5	832.1	909.9	30- 35	2894	23219	80.2,80.2
40	693.5	676.7	587.5	662.1	672.6	679.0	592.0	698.4	35- 40	2553	25771	89,89
45	358.5	376.7	340.4	373.7	345.2	376.7	352.0	398.7	40- 45	1809	27580	95.2,95.2
50	75.29	149.4	227.8	146.0	65.99	149.7	235.6	159.4	45- 50	916.1	28496	98.4,98.4
55	5.691	5.067	115.3	5.044	5.747	5.102	119.2	5.287	50- 55	328.1	28824	99.5,99.5
60	3.363	3.324	2.762	3.298	3.310	3.339	2.813	3.472	55- 60	105.7	28930	99.9,99.9
65	2.175	2.069	2.212	2.050	2.108	2.023	2.180	2.132	60- 65	15.74	28946	99.9,99.9
70	1.487	1.417	1.663	1.387	1.419	1.358	1.547	1.383	65- 70	8.692	28954	100,100
75	1.039	1.274	1.113	1.191	0.9863	1.278	0.9138	1.163	70- 75	6.497	28961	100,100
80	1.245	0.9698	0	0.8503	1.075	0.9916	0	0.8292	75- 80	4.718	28966	100,100
85	0.3071	0	0	0	0.3428	0	0	0	80- 85	2.125	28968	100,100
90	0.0567	0	0	0	0.0743	0	0	0	85- 90	0.1429	28968	100,100
95									90- 95			
100									95-100			
105									100-105			
110									105-110			
115									110-115			
120									115-120			
125									120-125			
130									125-130			
135									130-135			
140									135-140			
145									140-145			
150									145-150			
155									150-155			
160									155-160			
165									160-165			
170									165-170			
175									170-175			
180									175-180			
DEG	LUMINOUS INTENSITY:×10cd								UNIT:lm			

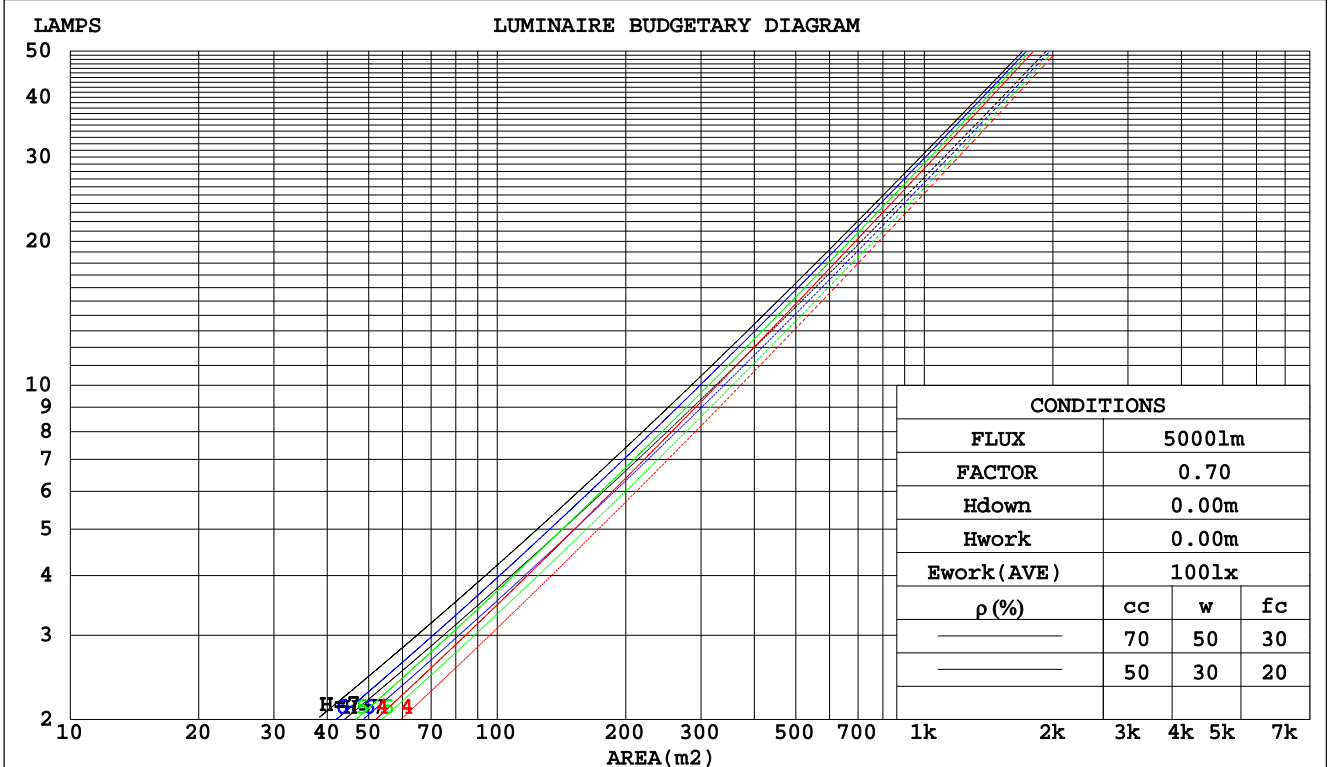
C Range: 0 - 360DEG  
 C Interval: 5.0DEG  
 Test Speed: HIGH  
 Temperature:25.3DEG  
 Operators:  
 Test Date:2015-03-14

γ Range: 0 - 90DEG  
 γ Interval: 0.5DEG  
 Test System:EVERFINE GO-2000B\_V1 SYSTEM V2.0.287  
 Humidity:65.0%  
 Test Distance:8.000m [K=1.0000]  
 Remarks: 反光罩: 25度

CU AND LUMINAIRE BUDGETARY ESTIMATE DIAGRAM

Test:U:220.1V I:1.390A P:297.0W PF:0.9700 Lamp Flux:28967.8x1 lm		
NAME: LED HIGH BAY LIGHT	TYPE:	WEIGHT:4
SPEC.:CREE XTE	DIM.:	SERIAL No.:
MFR.: QINHAN LIGHTING	SUR.:	PROTECTION ANGLE:

pcc	80%			70%			50%			30%			10%			0
pw	50%	30%	10%	50%	30%	10%	50%	30%	10%	50%	30%	10%	50%	30%	10%	0
pfc	20%			20%			20%			20%			20%			0
RCR	RCR:Room Cavity Ratio						Coefficients of Utilization(CU)									
0.0	1.19	1.19	1.19	1.16	1.16	1.16	1.11	1.11	1.11	1.06	1.06	1.06	1.02	1.02	1.02	1.00
1.0	1.11	1.09	1.07	1.09	1.07	1.05	1.05	1.03	1.02	1.01	.00	.99	.98	.97	.96	.94
2.0	1.04	.00	.97	1.02	.98	.95	.99	.96	.93	.96	.93	.91	.93	.91	.89	.88
3.0	.97	.92	.88	.96	.91	.88	.93	.89	.86	.91	.88	.85	.88	.86	.84	.82
4.0	.91	.86	.82	.90	.85	.81	.88	.84	.80	.86	.82	.79	.84	.81	.78	.77
5.0	.86	.80	.76	.85	.79	.76	.83	.78	.75	.81	.77	.74	.80	.76	.74	.72
6.0	.81	.75	.71	.80	.75	.71	.78	.74	.70	.77	.73	.70	.76	.72	.69	.68
7.0	.76	.71	.67	.76	.70	.66	.74	.70	.66	.73	.69	.66	.72	.68	.65	.64
8.0	.72	.67	.63	.72	.66	.63	.71	.66	.62	.70	.65	.62	.69	.65	.62	.60
9.0	.69	.63	.59	.68	.63	.59	.67	.62	.59	.66	.62	.59	.66	.62	.59	.57
10.0	.65	.60	.56	.65	.60	.56	.64	.59	.56	.63	.59	.56	.63	.59	.56	.55



C Range: 0 - 360DEG  
 C Interval: 5.0DEG  
 Test Speed: HIGH  
 Temperature:25.3DEG  
 Operators:  
 Test Date:2015-03-14

γ Range: 0 - 90DEG  
 γ Interval: 0.5DEG  
 Test System:EVERFINE GO-2000B\_V1 SYSTEM V2.0.287  
 Humidity:65.0%  
 Test Distance:8.000m [K=1.0000]  
 Remarks: 反光罩 25度

WEC AND CCEC

Test:U:220.1V I:1.390A P:297.0W PF:0.9700 Lamp Flux:28967.8x1 lm		
NAME: LED HIGH BAY LIGHT	TYPE:	WEIGHT:4
SPEC.:CREE XTE	DIM.:	SERIAL No.:
MFR.: QINHAN LIGHTING	SUR.:	PROTECTION ANGLE:

ρcc	80%			70%			50%			30%			10%			0
ρw	50%	30%	10%	50%	30%	10%	50%	30%	10%	50%	30%	10%	50%	30%	10%	0
ρfc	20%			20%			20%			20%			20%			0
RCR	RCR:Room Cavity Ratio						Wall Exitance Coefficients(WEC)									
0.0																
1.0	.172	.098	.031	.165	.094	.030	.153	.088	.028	.141	.081	.026	.130	.076	.024	
2.0	.165	.090	.028	.159	.088	.027	.149	.083	.026	.139	.078	.024	.130	.073	.023	
3.0	.157	.084	.025	.152	.082	.025	.143	.078	.024	.135	.074	.023	.127	.070	.022	
4.0	.149	.078	.023	.145	.076	.022	.138	.073	.022	.130	.070	.021	.124	.067	.020	
5.0	.142	.072	.021	.139	.071	.021	.132	.069	.020	.126	.066	.020	.120	.064	.019	
6.0	.136	.068	.019	.132	.067	.019	.127	.065	.019	.121	.063	.018	.116	.061	.018	
7.0	.129	.064	.018	.127	.063	.018	.121	.061	.018	.117	.060	.017	.112	.058	.017	
8.0	.124	.060	.017	.121	.060	.017	.117	.058	.017	.112	.057	.016	.108	.055	.016	
9.0	.118	.057	.016	.116	.057	.016	.112	.055	.016	.108	.054	.015	.104	.053	.015	
10.0	.113	.054	.015	.111	.054	.015	.108	.053	.015	.104	.052	.015	.101	.051	.015	

ρcc	80%			70%			50%			30%			10%			0
ρw	50%	30%	10%	50%	30%	10%	50%	30%	10%	50%	30%	10%	50%	30%	10%	0
ρfc	20%			20%			20%			20%			20%			0
RCR	RCR:Room Cavity Ratio						Ceiling Cavity Exitance Coefficients(CCEC)									
0.0	.190	.190	.190	.163	.163	.163	.111	.111	.111	.064	.064	.064	.020	.020	.020	
1.0	.171	.157	.145	.146	.135	.125	.100	.093	.086	.058	.054	.050	.018	.017	.016	
2.0	.155	.133	.113	.133	.114	.098	.091	.079	.068	.053	.046	.040	.017	.015	.013	
3.0	.143	.114	.090	.122	.098	.078	.084	.068	.055	.049	.040	.032	.016	.013	.011	
4.0	.132	.099	.073	.113	.085	.064	.078	.059	.045	.045	.035	.026	.015	.011	.009	
5.0	.123	.087	.060	.106	.075	.052	.073	.053	.037	.042	.031	.022	.014	.010	.007	
6.0	.116	.078	.050	.100	.067	.044	.069	.047	.031	.040	.028	.018	.013	.009	.006	
7.0	.109	.070	.043	.094	.061	.037	.065	.043	.026	.038	.025	.016	.012	.008	.005	
8.0	.103	.064	.037	.089	.055	.032	.062	.039	.023	.036	.023	.013	.012	.008	.004	
9.0	.098	.059	.032	.085	.051	.028	.059	.036	.020	.034	.021	.012	.011	.007	.004	
10.0	.093	.054	.028	.081	.047	.024	.056	.033	.017	.033	.020	.010	.011	.006	.003	

C Range: 0 - 360DEG  
 C Interval: 5.0DEG  
 Test Speed: HIGH  
 Temperature:25.3DEG  
 Operators:  
 Test Date:2015-03-14

γ Range: 0 - 90DEG  
 γ Interval: 0.5DEG  
 Test System:EVERFINE GO-2000B\_V1 SYSTEM V2.0.287  
 Humidity:65.0%  
 Test Distance:8.000m [K=1.0000]  
 Remarks: 反光罩: 25度

UGR(Unified Glare Rating) Table

Test:U:220.1V I:1.390A P:297.0W PF:0.9700 Lamp Flux:28967.8x1 lm										
NAME: LED HIGH BAY LIGHT					TYPE:			WEIGHT:4		
SPEC.:CREE XTE					DIM.:			SERIAL No.:		
MFR.: QINHAN LIGHTING					SUR.:			PROTECTION ANGLE:		
ceiling/cavity	0.7	0.7	0.5	0.5	0.3	0.7	0.7	0.5	0.5	0.3
walls	0.5	0.3	0.5	0.3	0.3	0.5	0.3	0.5	0.3	0.3
working plane	0.2	0.2	0.2	0.2	0.2	0.2	0.2	0.2	0.2	0.2
Room dimensions	Viewed crosswise					Viewed endwise				
x = 2H y = 2H	28.7	29.6	28.9	29.7	29.9	29.1	30.0	29.4	30.2	30.4
3H	28.5	29.3	28.7	29.5	29.7	29.0	29.8	29.2	30.0	30.2
4H	28.4	29.2	28.7	29.4	29.6	28.9	29.7	29.2	29.9	30.1
6H	28.3	29.1	28.6	29.3	29.5	28.8	29.5	29.1	29.8	30.0
8H	28.3	29.0	28.6	29.2	29.5	28.7	29.5	29.0	29.7	30.0
12H	28.2	28.9	28.5	29.2	29.5	28.7	29.4	29.0	29.6	29.9
4H 2H	28.4	29.2	28.7	29.4	29.6	28.9	29.7	29.2	29.9	30.1
3H	28.2	28.9	28.5	29.2	29.5	28.7	29.4	29.0	29.7	29.9
4H	28.1	28.8	28.5	29.1	29.4	28.6	29.2	28.9	29.5	29.8
6H	28.0	28.6	28.4	28.9	29.3	28.5	29.1	28.9	29.4	29.7
8H	28.0	28.5	28.4	28.8	29.2	28.5	29.0	28.8	29.3	29.7
12H	27.9	28.4	28.3	28.8	29.2	28.4	28.9	28.8	29.2	29.6
8H 4H	28.0	28.5	28.4	28.8	29.2	28.5	29.0	28.8	29.3	29.7
6H	27.9	28.3	28.3	28.7	29.1	28.4	28.8	28.8	29.2	29.6
8H	27.8	28.2	28.3	28.6	29.1	28.3	28.7	28.7	29.1	29.5
12H	27.8	28.1	28.2	28.5	29.0	28.2	28.6	28.7	29.0	29.5
12H 4H	27.9	28.4	28.3	28.8	29.2	28.4	28.9	28.8	29.2	29.6
6H	27.8	28.2	28.3	28.6	29.1	28.3	28.7	28.7	29.1	29.5
8H	27.8	28.1	28.2	28.5	29.0	28.2	28.6	28.7	29.0	29.5
Variations with the observer position at spacings:										
S = 1.0H	+ 2.7 / -21.7					+ 2.3 / - 8.0				
1.5H	+ 4.5 / -19.6					+ 3.5 / -12.2				
2.0H	+ 8.2 / -17.4					+ 6.0 / -21.3				

CIE Pub.117 Corrected 28968 lm Total Lamp Luminous Flux.(8log(F/F0) = 11.7)

C Range: 0 - 360DEG  
 C Interval: 5.0DEG  
 Test Speed: HIGH  
 Temperature:25.3DEG  
 Operators:  
 Test Date:2015-03-14

γ Range: 0 - 90DEG  
 γ Interval: 0.5DEG  
 Test System:EVERFINE GO-2000B\_V1 SYSTEM V2.0.287  
 Humidity:65.0%  
 Test Distance:8.000m [K=1.0000]  
 Remarks: 反光罩 25度

UTILIZATION FACTORS TABLE

Test:U:220.1V I:1.390A P:297.0W PF:0.9700 Lamp Flux:28967.8x1 lm		
NAME: LED HIGH BAY LIGHT	TYPE:	WEIGHT:4
SPEC.:CREE XTE	DIM.:	SERIAL No.:
MFR.: QINHAN LIGHTING	SUR.:	PROTECTION ANGLE:

REFLECTANCE										
Ceiling	0.8	0.8	0.8	0.7	0.7	0.7	0.5	0.5	0.5	0
Walls	0.7	0.5	0.3	0.7	0.5	0.3	0.7	0.5	0.3	0
Working plane	0.2	0.2	0.2	0.2	0.2	0.2	0.2	0.2	0.2	0
ROOM INDEX	UTILIZATION FACTORS(PERCENT) $k(RI) \times RCR = 5$									
k = 0.60	85	78	74	84	77	73	83	77	73	69
0.80	93	86	82	92	86	82	91	85	82	78
1.00	98	92	88	97	91	88	95	91	87	83
1.25	102	97	93	101	96	93	99	95	92	87
1.50	105	100	97	104	99	96	101	98	95	90
2.00	108	104	100	107	103	100	104	101	98	93
2.50	110	106	103	108	105	102	105	102	100	94
3.00	111	108	105	110	106	104	106	104	102	95
4.00	113	111	108	111	109	107	108	106	104	97
5.00	115	112	110	113	110	109	109	107	106	98
ROOM INDEX	UF(total)									Direct
According to DIN EN 13032-2 2004			Suspended				SHRNOM = 1.25			

C Range: 0 - 360DEG  
 C Interval: 5.0DEG  
 Test Speed: HIGH  
 Temperature:25.3DEG  
 Operators:  
 Test Date:2015-03-14

$\gamma$  Range: 0 - 90DEG  
 $\gamma$  Interval: 0.5DEG  
 Test System:EVERFINE GO-2000B\_V1 SYSTEM V2.0.287  
 Humidity:65.0%  
 Test Distance:8.000m [K=1.0000]  
 Remarks: 反光罩: 25度

ISOCANDELA DIAGRAM

Test:U:220.1V I:1.390A P:297.0W PF:0.9700 Lamp Flux:28967.8x1 lm		
NAME: LED HIGH BAY LIGHT	TYPE:	WEIGHT:4
SPEC.:CREE XTE	DIM.:	SERIAL No.:
MFR.: QINHAN LIGHTING	SUR.:	PROTECTION ANGLE:

Conical surface Flux(90deg):

27580 lm

%lum = 95.2%

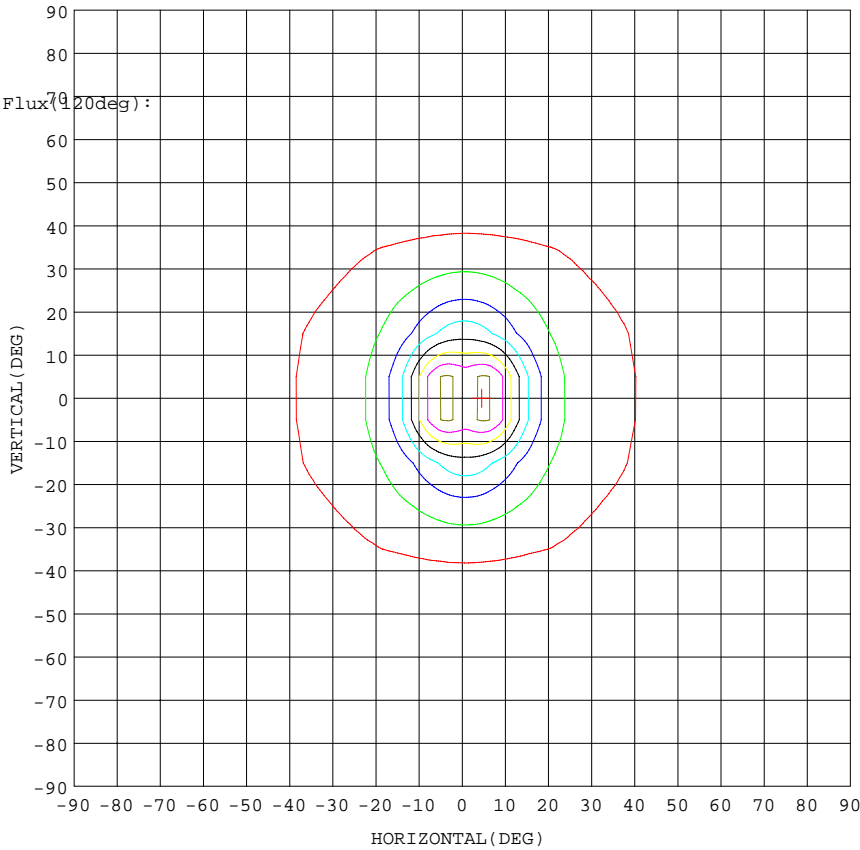
%lamp = 95.2%

Conical surface Flux(70deg):

28930 lm

%lum = 99.9%

%lamp = 99.9%



Imax:67567(H4.5,V0.0)  
(At:C=0.0,Gamma=5.0)

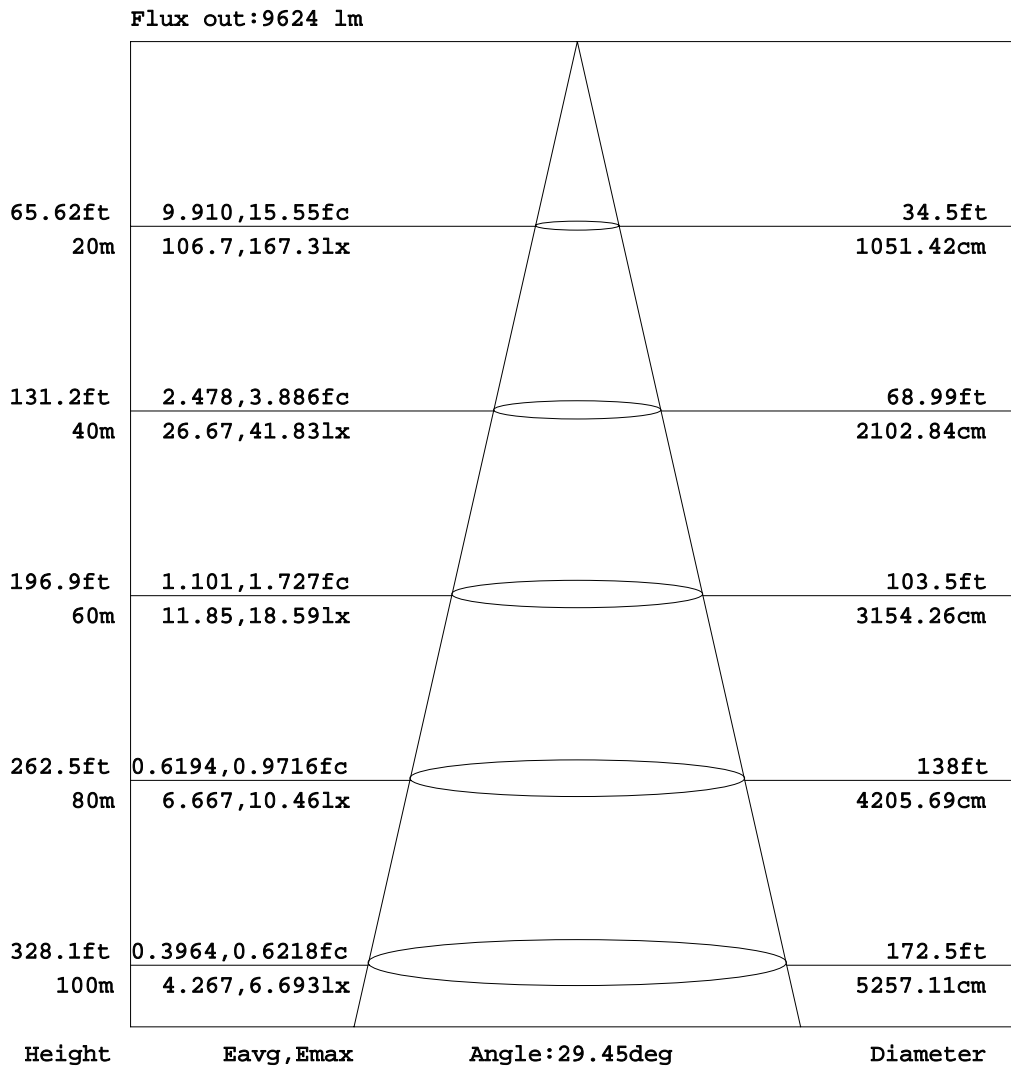
UNIT: cd

C Range: 0 - 360DEG  
C Interval: 5.0DEG  
Test Speed: HIGH  
Temperature:25.3DEG  
Operators:  
Test Date:2015-03-14

γ Range: 0 - 90DEG  
γ Interval: 0.5DEG  
Test System:EVERFINE GO-2000B\_V1 SYSTEM V2.0.287  
Humidity:65.0%  
Test Distance:8.000m [K=1.0000]  
Remarks: 反光罩: 25度

AAI Figure

Test:U:220.1V I:1.390A P:297.0W PF:0.9700 Lamp Flux:28967.8x1 lm		
NAME: LED HIGH BAY LIGHT	TYPE:	WEIGHT:4
SPEC.:CREE XTE	DIM.:	SERIAL No.:
MFR.: QINHAN LIGHTING	SUR.:	PROTECTION ANGLE:



Note:The Curves indicate the illuminated area and the average illumination when the luminaire is at different distance.

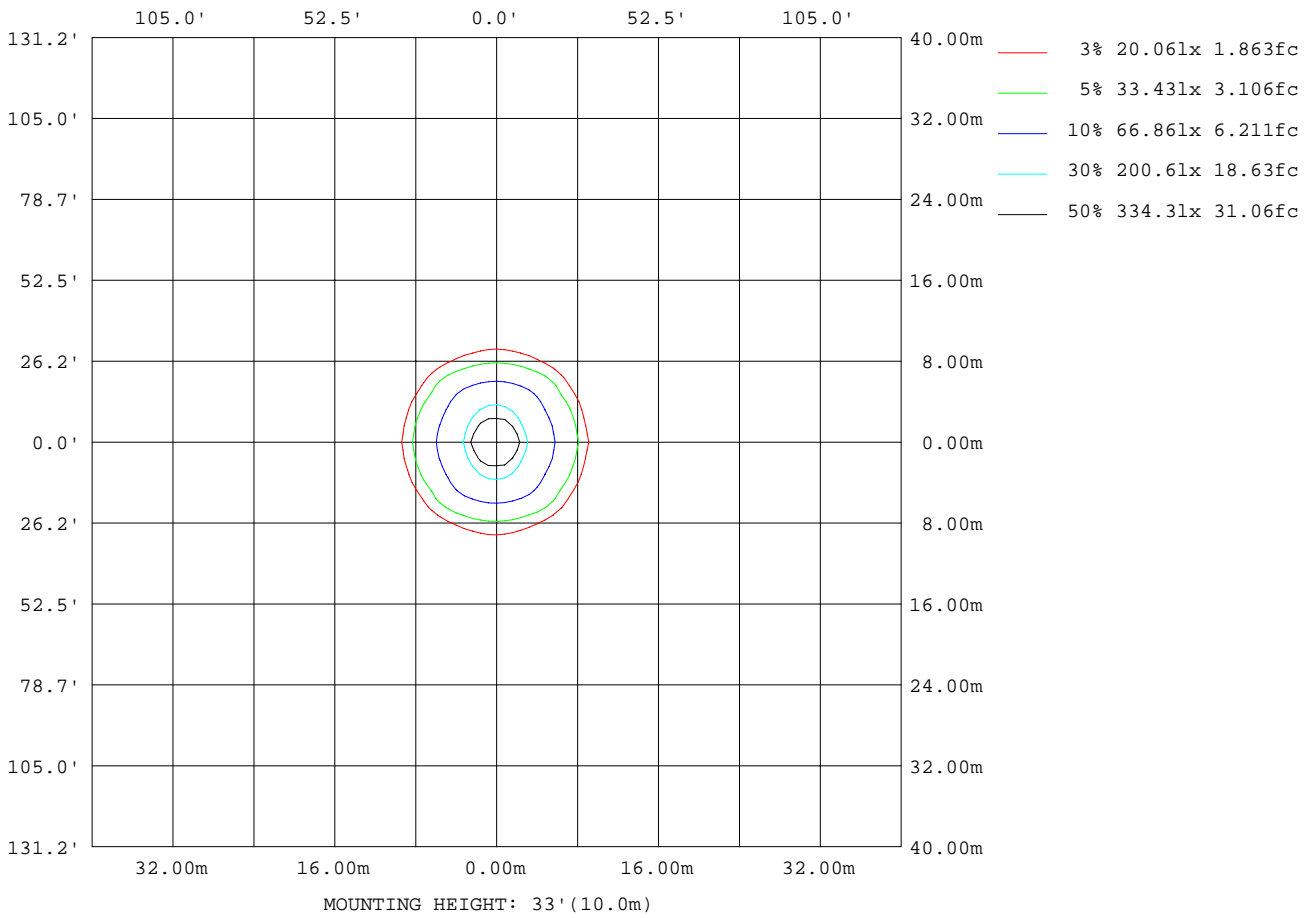
C Range: 0 - 360DEG  
 C Interval: 5.0DEG  
 Test Speed: HIGH  
 Temperature:25.3DEG  
 Operators:  
 Test Date:2015-03-14

γ Range: 0 - 90DEG  
 γ Interval: 0.5DEG  
 Test System:EVERFINE GO-2000B\_V1 SYSTEM V2.0.287  
 Humidity:65.0%  
 Test Distance:8.000m [K=1.0000]  
 Remarks: 反光罩 25度



ISOLUX DIAGRAM

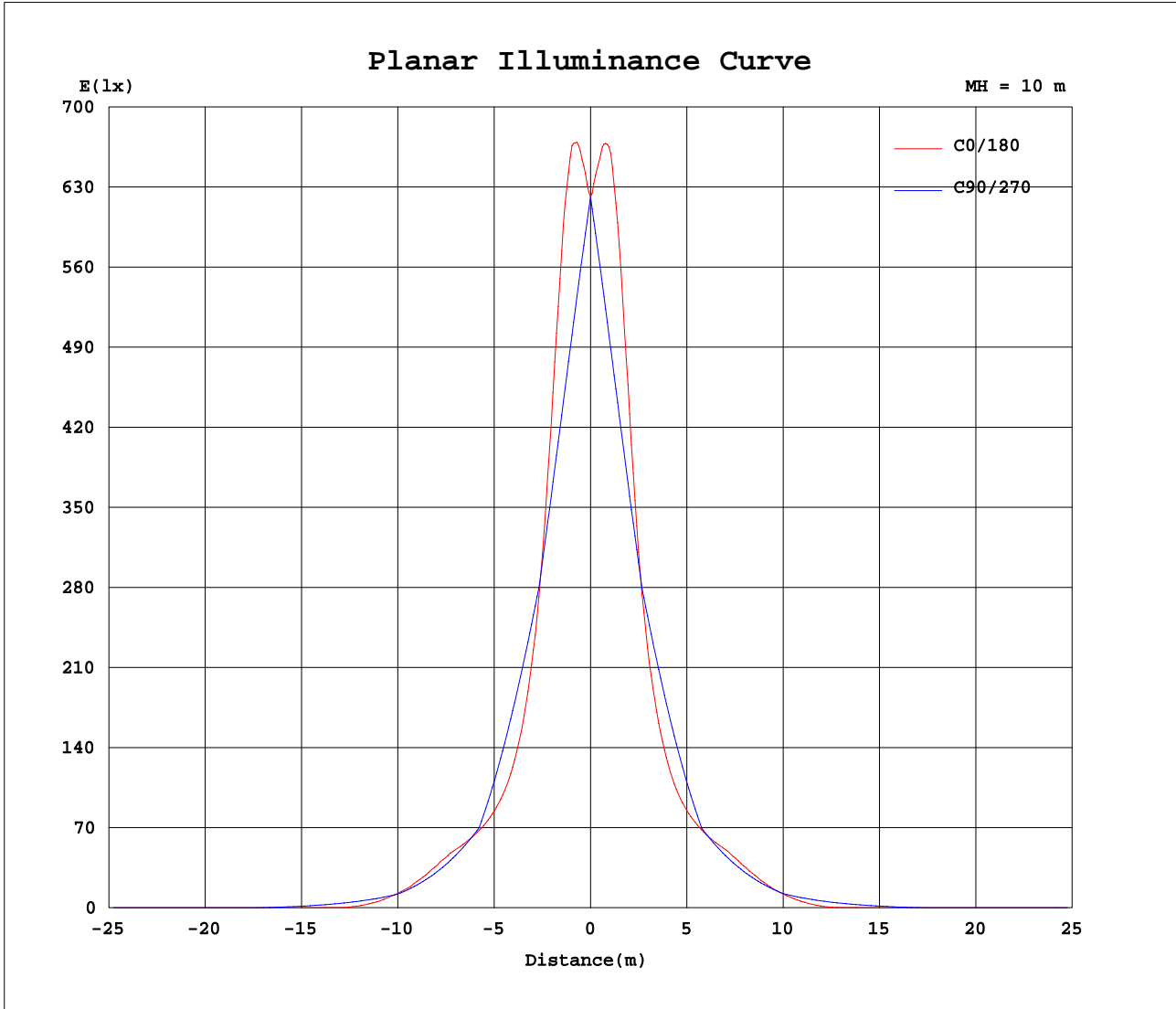
Test:U:220.1V I:1.390A P:297.0W PF:0.9700 Lamp Flux:28967.8x1 lm		
NAME: LED HIGH BAY LIGHT	TYPE:	WEIGHT:4
SPEC.:CREE XTE	DIM.:	SERIAL No.:
MFR.: QINHAN LIGHTING	SUR.:	PROTECTION ANGLE:



C Range: 0 - 360DEG  
 C Interval: 5.0DEG  
 Test Speed: HIGH  
 Temperature:25.3DEG  
 Operators:  
 Test Date:2015-03-14

γ Range: 0 - 90DEG  
 γ Interval: 0.5DEG  
 Test System:EVERFINE GO-2000B\_V1 SYSTEM V2.0.287  
 Humidity:65.0%  
 Test Distance:8.000m [K=1.0000]  
 Remarks: 反光罩: 25度

Planar Illuminance Curve



C Range: 0 - 360DEG  
 C Interval: 5.0DEG  
 Test Speed: HIGH  
 Temperature: 25.3DEG  
 Operators:  
 Test Date: 2015-03-14

γ Range: 0 - 90DEG  
 γ Interval: 0.5DEG  
 Test System: EVERFINE GO-2000B\_V1 SYSTEM V2.0.287  
 Humidity: 65.0%  
 Test Distance: 8.000m [K=1.0000]  
 Remarks: 反光罩: 25度

LUMINOUS DISTRIBUTION INTENSITY DATA

Test:U:220.1V I:1.390A P:297.0W PF:0.9700 Lamp Flux:28967.8x1 lm		
NAME: LED HIGH BAY LIGHT	TYPE:	WEIGHT:4
SPEC.:CREE XTE	DIM.:	SERIAL No.:
MFR.: QINHAN LIGHTING	SUR.:	PROTECTION ANGLE:

Table--1

UNIT: x10cd

C( DEG) γ (DEG)	0	5	10	15	20	25	30	35	40	45	50	55	60	65	70	75	80	85	90
0	6215	6215	6215	6215	6215	6215	6215	6215	6215	6215	6215	6215	6215	6215	6215	6215	6215	6215	6215
5	6758	6643	6529	6418	6309	6204	6105	6012	5916	5821	5726	5633	5542	5467	5395	5321	5253	5206	5178
10	5259	5101	4972	4872	4798	4750	4715	4692	4665	4620	4579	4547	4490	4426	4363	4292	4236	4175	4142
15	3022	2926	2865	2831	2820	2829	2868	2916	2955	3010	3035	3053	3053	3050	3055	3069	3086	3099	3105
20	1816	1769	1742	1735	1745	1762	1789	1820	1856	1885	1921	2003	2087	2163	2238	2316	2382	2421	2431
25	1274	1254	1245	1247	1257	1283	1298	1318	1351	1390	1440	1497	1548	1607	1650	1690	1728	1752	1756
30	1045	1035	1032	1033	1042	1055	1057	1061	1088	1108	1136	1155	1171	1173	1163	1142	1114	1092	1082
35	927	907	899	905	929	905	866	854	871	898	925	944	903	874	855	844	837	835	835
40	694	660	647	657	670	647	628	619	641	677	664	647	627	602	593	588	585	585	588
45	358	329	323	335	331	327	335	343	366	377	370	351	336	326	323	328	332	335	340
50	75.3	60.1	56.5	76.6	89.8	72.9	74.6	132	161	149	111	69.7	81.7	128	165	197	213	222	228
55	5.69	5.38	5.41	5.45	5.84	5.34	6.05	26.0	33.4	5.07	5.92	8.78	37.5	66.8	88.5	104	110	113	115
60	3.36	3.21	3.19	3.12	3.08	3.13	3.16	2.93	3.08	3.32	3.62	4.04	11.5	19.6	21.1	16.9	10.2	4.78	2.76
65	2.17	2.09	2.05	2.01	1.99	1.94	1.91	2.00	2.06	2.07	2.00	1.84	1.93	2.00	2.07	2.13	2.18	2.21	2.21
70	1.49	1.45	1.40	1.36	1.32	1.32	1.34	1.34	1.32	1.42	1.47	1.51	1.54	1.57	1.60	1.63	1.65	1.66	1.66
75	1.04	1.01	1.01	0.97	1.03	0.97	1.02	1.22	1.26	1.27	1.23	1.21	1.19	1.16	1.15	1.13	1.13	1.12	1.11
80	1.25	1.22	1.21	1.20	1.06	0.91	1.16	1.39	1.30	0.97	0.65	0.46	0.32	0.21	0.13	0.07	0.03	0.01	0.00
85	0.31	0.19	0.40	0.46	0.38	0.26	0.00	0.00	0.00	0.00	0.00	0.00	0.00	0.00	0.00	0.00	0.00	0.00	0.00
90	0.06	0.00	0.00	0.00	0.00	0.00	0.00	0.00	0.00	0.00	0.00	0.00	0.00	0.00	0.00	0.00	0.00	0.00	0.00

C Range: 0 - 360DEG  
 C Interval: 5.0DEG  
 Test Speed: HIGH  
 Temperature:25.3DEG  
 Operators:  
 Test Date:2015-03-14

γ Range: 0 - 90DEG  
 γ Interval: 0.5DEG  
 Test System:EVERFINE GO-2000B\_V1 SYSTEM V2.0.287  
 Humidity:65.0%  
 Test Distance:8.000m [K=1.0000]  
 Remarks: 反光罩 25度

LUMINOUS DISTRIBUTION INTENSITY DATA

Test:U:220.1V I:1.390A P:297.0W PF:0.9700 Lamp Flux:28967.8x1 lm		
NAME: LED HIGH BAY LIGHT	TYPE:	WEIGHT:4
SPEC.:CREE XTE	DIM.:	SERIAL No.:
MFR.: QINHAN LIGHTING	SUR.:	PROTECTION ANGLE:

Table--2

UNIT: x10cd

C( DEG) γ (DEG)	95	100	105	110	115	120	125	130	135	140	145	150	155	160	165	170	175	180	185
0	6215	6215	6215	6215	6215	6215	6215	6215	6215	6215	6215	6215	6215	6215	6215	6215	6215	6215	6215
5	5201	5257	5319	5384	5453	5529	5615	5711	5813	5906	6002	6098	6200	6304	6412	6523	6636	6750	6637
10	4178	4231	4288	4360	4426	4492	4560	4607	4632	4673	4715	4757	4803	4844	4909	5000	5122	5279	5124
15	3103	3091	3076	3065	3069	3065	3073	3054	3024	2989	2934	2887	2854	2833	2838	2875	2939	3036	2941
20	2422	2385	2324	2249	2173	2097	2014	1929	1889	1873	1837	1801	1780	1764	1757	1767	1796	1845	1797
25	1752	1731	1697	1656	1612	1554	1500	1452	1398	1357	1330	1308	1284	1266	1257	1256	1264	1284	1263
30	1092	1116	1142	1165	1175	1173	1159	1139	1110	1082	1064	1062	1058	1046	1039	1036	1038	1047	1037
35	835	837	846	857	875	904	945	920	892	866	854	868	909	931	902	899	906	926	907
40	587	584	589	595	606	631	645	660	662	636	616	626	645	672	656	638	644	673	645
45	339	333	333	328	331	338	351	361	374	358	337	330	329	335	347	320	318	345	321
50	225	216	201	170	134	85.6	68.5	110	146	160	132	73.1	78.3	93.7	78.8	58.5	57.2	66.0	57.0
55	115	113	106	91.2	69.8	41.2	8.14	5.90	5.04	33.5	24.0	6.34	5.47	6.76	5.83	5.71	5.55	5.75	5.55
60	4.79	10.3	17.0	21.8	20.9	11.6	4.01	3.61	3.30	3.07	2.93	3.20	3.17	3.09	3.18	3.26	3.22	3.31	3.23
65	2.19	2.15	2.10	2.05	1.98	1.91	1.83	1.97	2.05	2.05	2.01	1.94	1.97	2.00	2.00	2.05	2.07	2.11	2.06
70	1.65	1.62	1.61	1.59	1.55	1.53	1.49	1.44	1.39	1.32	1.37	1.38	1.35	1.34	1.36	1.37	1.41	1.42	1.39
75	1.10	1.11	1.13	1.14	1.15	1.17	1.19	1.19	1.19	1.19	1.17	1.04	0.98	1.00	0.95	0.97	0.98	0.99	0.97
80	0.01	0.03	0.07	0.13	0.21	0.31	0.45	0.61	0.85	1.12	1.21	1.09	0.92	0.91	1.05	1.01	1.04	1.07	1.04
85	0.00	0.00	0.00	0.00	0.00	0.00	0.00	0.00	0.00	0.00	0.00	0.00	0.28	0.49	0.53	0.44	0.29	0.34	0.31
90	0.00	0.00	0.00	0.00	0.00	0.00	0.00	0.00	0.00	0.00	0.00	0.00	0.00	0.00	0.00	0.00	0.00	0.07	0.00

C Range: 0 - 360DEG  
 C Interval: 5.0DEG  
 Test Speed: HIGH  
 Temperature:25.3DEG  
 Operators:  
 Test Date:2015-03-14

γ Range: 0 - 90DEG  
 γ Interval: 0.5DEG  
 Test System:EVERFINE GO-2000B\_V1 SYSTEM V2.0.287  
 Humidity:65.0%  
 Test Distance:8.000m [K=1.0000]  
 Remarks: 反光罩: 25度

LUMINOUS DISTRIBUTION INTENSITY DATA

Test:U:220.1V I:1.390A P:297.0W PF:0.9700 Lamp Flux:28967.8x1 lm		
NAME: LED HIGH BAY LIGHT	TYPE:	WEIGHT:4
SPEC.:CREE XTE	DIM.:	SERIAL No.:
MFR.: QINHAN LIGHTING	SUR.:	PROTECTION ANGLE:

Table--3

UNIT: x10cd

C( DEG) γ (DEG)	190	195	200	205	210	215	220	225	230	235	240	245	250	255	260	265	270	275	280
0	6215	6215	6215	6215	6215	6215	6215	6215	6215	6215	6215	6215	6215	6215	6215	6215	6215	6215	6215
5	6524	6414	6306	6203	6101	6005	5909	5815	5713	5616	5527	5451	5382	5317	5254	5198	5175	5202	5248
10	5005	4915	4853	4813	4769	4728	4688	4651	4623	4576	4504	4437	4366	4285	4226	4173	4135	4164	4221
15	2880	2846	2843	2869	2908	2958	3017	3054	3083	3100	3096	3098	3086	3090	3088	3095	3095	3082	3061
20	1769	1761	1771	1790	1817	1859	1895	1919	1968	2051	2128	2196	2273	2336	2388	2413	2420	2402	2356
25	1255	1255	1266	1285	1310	1335	1368	1412	1467	1514	1571	1625	1663	1702	1730	1743	1746	1735	1714
30	1033	1034	1040	1051	1056	1065	1084	1117	1138	1161	1171	1173	1159	1134	1105	1081	1072	1081	1105
35	899	905	925	902	865	853	871	903	927	933	896	869	851	838	832	831	832	832	836
40	643	663	677	651	633	625	646	679	675	655	632	611	599	589	588	589	592	591	592
45	323	349	338	333	337	350	367	377	374	362	352	340	342	343	343	346	352	349	348
50	57.6	81.1	95.2	75.1	80.1	134	160	150	112	78.5	105	153	187	210	223	230	236	232	225
55	5.69	5.81	6.75	5.47	6.19	26.5	34.0	5.10	5.83	15.3	46.7	78.3	99.6	111	115	117	119	118	116
60	3.28	3.21	3.13	3.20	3.23	3.01	3.14	3.34	3.58	4.07	14.8	23.4	23.2	17.9	10.4	4.87	2.81	4.93	10.7
65	2.04	2.00	1.99	1.96	1.94	2.01	2.04	2.02	1.93	1.78	1.86	1.93	1.99	2.06	2.11	2.15	2.18	2.19	2.20
70	1.35	1.34	1.31	1.31	1.32	1.29	1.25	1.36	1.40	1.41	1.43	1.44	1.46	1.49	1.51	1.53	1.55	1.56	1.58
75	0.95	0.92	0.98	0.92	0.95	1.14	1.22	1.28	1.20	1.09	1.03	0.98	0.94	0.93	0.92	0.91	0.91	0.93	0.97
80	1.02	1.06	0.89	0.75	0.98	1.19	1.26	0.99	0.65	0.40	0.27	0.17	0.11	0.06	0.03	0.01	0.00	0.01	0.03
85	0.34	0.31	0.23	0.18	0.00	0.00	0.00	0.00	0.00	0.00	0.00	0.00	0.00	0.00	0.00	0.00	0.00	0.00	0.00
90	0.00	0.00	0.00	0.00	0.00	0.00	0.00	0.00	0.00	0.00	0.00	0.00	0.00	0.00	0.00	0.00	0.00	0.00	0.00

C Range: 0 - 360DEG  
 C Interval: 5.0DEG  
 Test Speed: HIGH  
 Temperature:25.3DEG  
 Operators:  
 Test Date:2015-03-14

γ Range: 0 - 90DEG  
 γ Interval: 0.5DEG  
 Test System:EVERFINE GO-2000B\_V1 SYSTEM V2.0.287  
 Humidity:65.0%  
 Test Distance:8.000m [K=1.0000]  
 Remarks: 反光罩: 25度

LUMINOUS DISTRIBUTION INTENSITY DATA

Test:U:220.1V I:1.390A P:297.0W PF:0.9700 Lamp Flux:28967.8x1 lm		
NAME: LED HIGH BAY LIGHT	TYPE:	WEIGHT:4
SPEC.:CREE XTE	DIM.:	SERIAL No.:
MFR.: QINHAN LIGHTING	SUR.:	PROTECTION ANGLE:

Table--4

UNIT: x10cd

C( DEG) γ (DEG)	285	290	295	300	305	310	315	320	325	330	335	340	345	350	355				
0	6215	6215	6215	6215	6215	6215	6215	6215	6215	6215	6215	6215	6215	6215	6215				
5	5316	5388	5458	5535	5628	5719	5813	5910	6008	6102	6202	6307	6416	6529	6643				
10	4276	4342	4414	4481	4543	4573	4617	4660	4687	4711	4748	4796	4870	4971	5100				
15	3044	3043	3039	3045	3044	3027	2992	2939	2906	2860	2823	2815	2828	2863	2925				
20	2304	2229	2152	2075	1979	1906	1870	1847	1811	1785	1759	1742	1733	1740	1768				
25	1680	1640	1593	1534	1485	1429	1384	1346	1313	1294	1272	1254	1244	1243	1253				
30	1132	1155	1163	1163	1148	1130	1110	1083	1061	1052	1047	1036	1028	1028	1034				
35	842	855	874	901	938	943	910	877	861	870	903	925	908	898	908				
40	597	608	620	639	674	691	698	666	642	645	663	689	668	654	664				
45	353	358	354	365	376	388	399	391	374	360	351	347	353	333	335				
50	221	199	161	116	93.5	118	159	176	150	100	87.7	99.0	86.1	65.2	63.2				
55	117	108	86.6	54.6	21.9	6.14	5.29	37.8	33.7	6.47	5.64	7.76	5.70	5.59	5.47				
60	18.9	25.2	25.5	18.3	4.59	3.76	3.47	3.26	3.13	3.36	3.34	3.29	3.28	3.31	3.26				
65	2.18	2.14	2.07	1.99	1.90	2.05	2.13	2.14	2.09	2.02	2.06	2.10	2.11	2.12	2.13				
70	1.59	1.58	1.54	1.49	1.45	1.41	1.38	1.31	1.36	1.39	1.39	1.39	1.42	1.44	1.46				
75	1.00	1.02	1.02	1.02	1.04	1.07	1.16	1.19	1.17	1.03	1.00	1.07	1.01	1.04	1.03				
80	0.07	0.12	0.18	0.25	0.36	0.51	0.83	1.16	1.28	1.11	0.88	1.04	1.23	1.26	1.25				
85	0.00	0.00	0.00	0.00	0.00	0.00	0.00	0.00	0.00	0.00	0.24	0.32	0.37	0.44	0.29				
90	0.00	0.00	0.00	0.00	0.00	0.00	0.00	0.00	0.00	0.00	0.00	0.00	0.00	0.00	0.00				

C Range: 0 - 360DEG  
 C Interval: 5.0DEG  
 Test Speed: HIGH  
 Temperature:25.3DEG  
 Operators:  
 Test Date:2015-03-14

γ Range: 0 - 90DEG  
 γ Interval: 0.5DEG  
 Test System:EVERFINE GO-2000B\_V1 SYSTEM V2.0.287  
 Humidity:65.0%  
 Test Distance:8.000m [K=1.0000]  
 Remarks: 反光罩: 25度