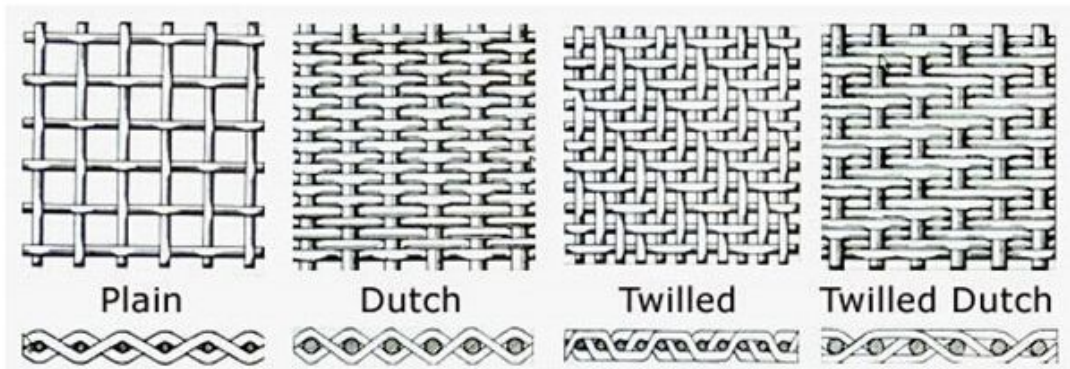


**Anping Yilida Metal Wire Mesh Co.,Ltd**  
**Wire Mesh Development Zone,Anping,Hebei,China 053600**

**Material:** Black Wire,Aluminum Wire,Galvanized Wire,SUS302, 304, 304L, 316, 316L, etc

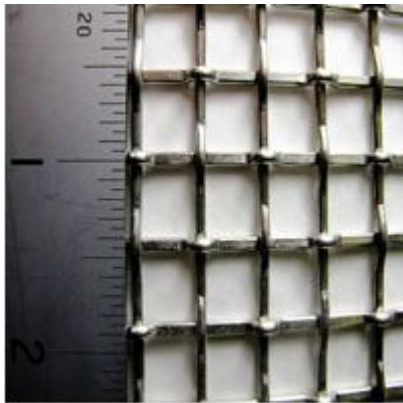
**Weaving Method:**



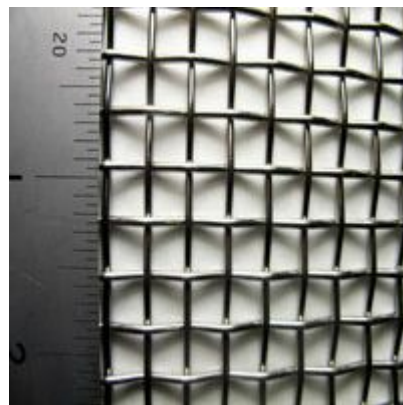
**Specifications:**

**Heavy duty 10mm to 2mm hole size**

2 Mesh



Aperture	10mm
Wire Diameter	2mm
Open Area	
Mesh No.	2
Weight	4kg/m <sup>2</sup>



Aperture	6.87mm
Wire Diameter	1.6mm
Open Area	
Mesh No.	3
Weight	3.84kg/m <sup>2</sup>

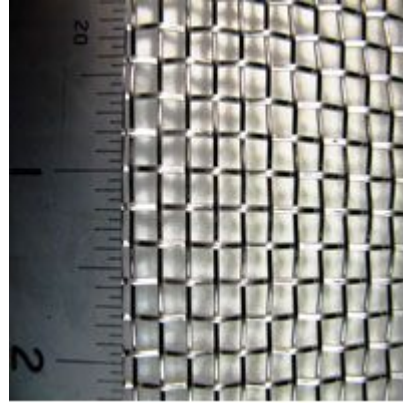
3 Mesh

3 Mesh

**Anping Yilida Metal Wire Mesh Co.,Ltd**  
**Wire Mesh Development Zone,Anping,Hebei,China 053600**

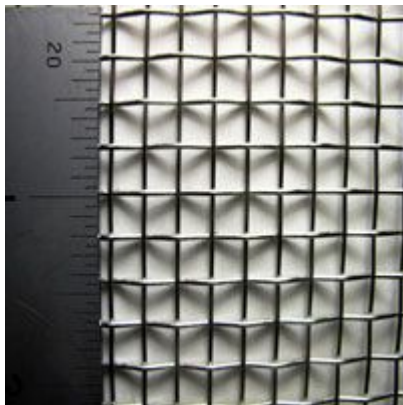


Aperture	7.07mm
Wire Diameter	1.4mm
Open Area	70%
Mesh No.	3
Weight	2.94kg/m <sup>2</sup>



Aperture	4mm
Wire Diameter	1mm
Open Area	65%
Mesh No.	5
Weight	2.5kg/m <sup>2</sup>

4 Mesh



Aperture	5.45mm
Wire Diameter	0.9mm
Open Area	65%
Mesh No.	4
Weight	1.62kg/m <sup>2</sup>

6 Mesh

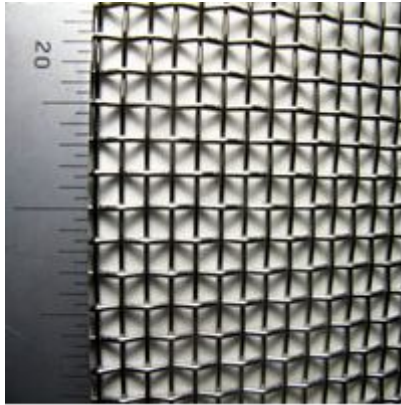


Aperture	4mm
Wire Diameter	1mm
Open Area	65%
Mesh No.	5
Weight	2.5kg/m <sup>2</sup>

5 Mesh

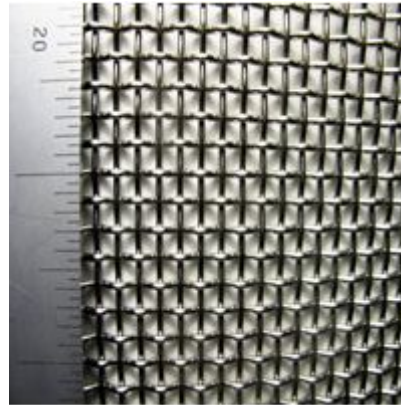
**Anping Yilida Metal Wire Mesh Co.,Ltd**  
**Wire Mesh Development Zone,Anping,Hebei,China 053600**

6 Mesh



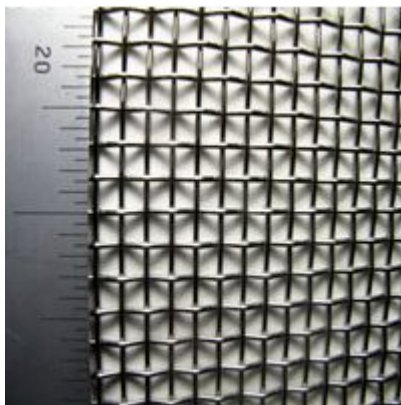
Aperture	3.5mm
Wire Diameter	0.71mm
Open Area	69%
Mesh No.	6
Weight	1.51kg/m <sup>2</sup>

6 Mesh



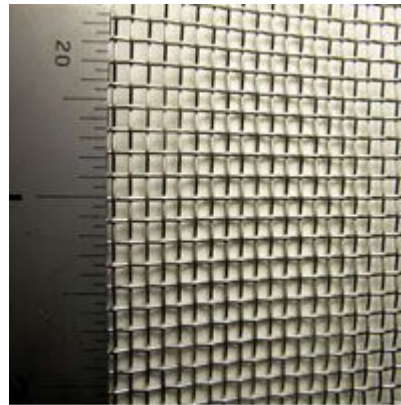
Aperture	3mm
Wire Diameter	1.2mm
Open Area	51%
Mesh No.	6
Weight	4.32kg/m <sup>2</sup>

6 Mesh



Aperture	3.33mm
Wire Diameter	0.9mm
Open Area	62%
Mesh No.	6
Weight	2.43kg/m <sup>2</sup>

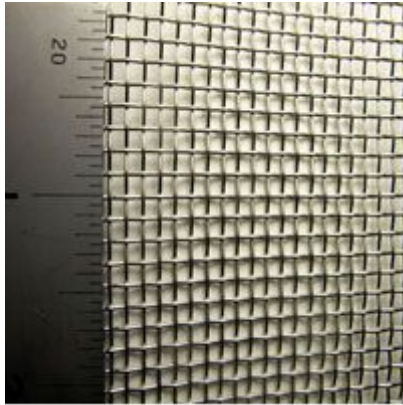
8 Mesh



Aperture	2.62mm
Wire Diameter	0.56mm
Open Area	68%
Mesh No.	8
Weight	1.25kg/m <sup>2</sup>

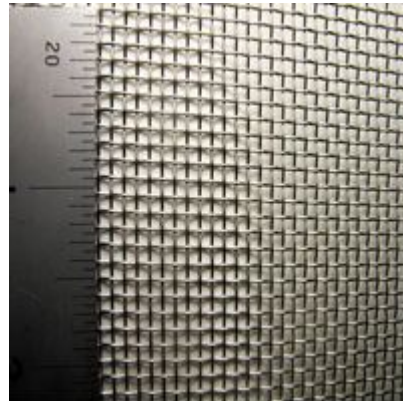
**Anping Yilida Metal Wire Mesh Co.,Ltd**  
**Wire Mesh Development Zone,Anping,Hebei,China 053600**

8 Mesh



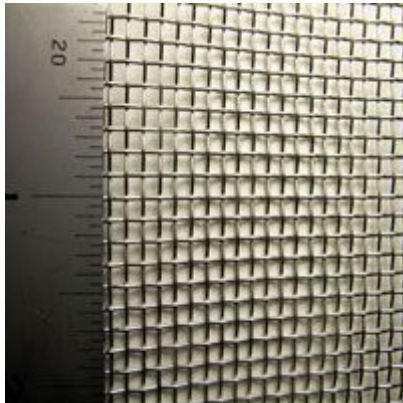
Aperture	2.47mm
Wire Diameter	0.71mm
Open Area	60%
Mesh No.	8
Weight	2.02kg/m <sup>2</sup>

10 Mesh



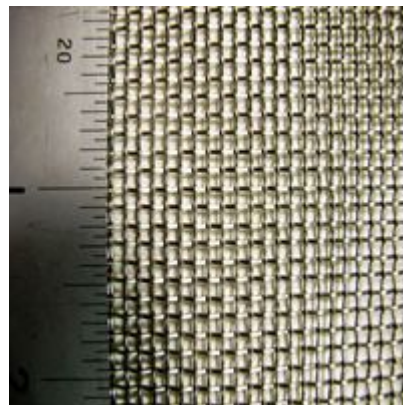
Aperture	1.98mm
Wire Diameter	0.56mm
Open Area	61%
Mesh No.	10
Weight	1.48kg/m <sup>2</sup>

8 Mesh



Aperture	2.28mm
Wire Diameter	0.9mm
Open Area	51%
Mesh No.	8
Weight	3.24kg/m <sup>2</sup>

10 Mesh

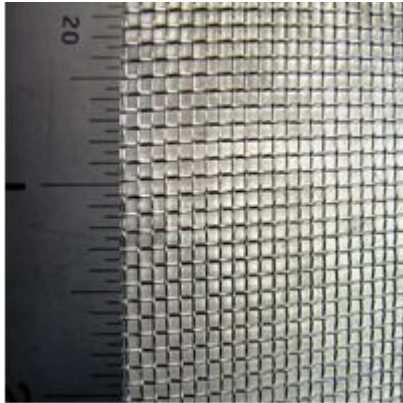


Aperture	1.91mm
Wire Diameter	0.63mm
Open Area	57%
Mesh No.	10
Weight	1.98kg/m <sup>2</sup>

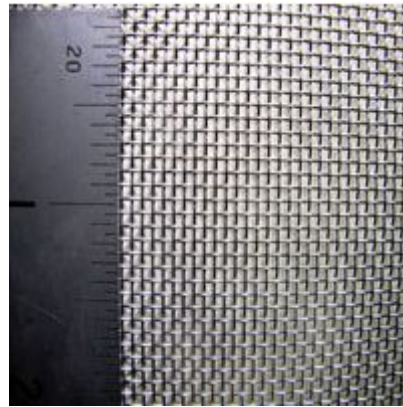
**Anping Yilida Metal Wire Mesh Co.,Ltd**  
**Wire Mesh Development Zone,Anping,Hebei,China 053600**

Coarse mesh from 2mm-0.5mm hole size

12 Mesh

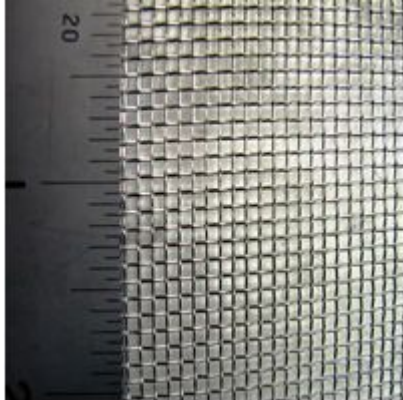


Aperture	1.78mm
Wire Diameter	0.34mm
Open Area	70%
Mesh No.	12
Weight	0.69kg/m <sup>2</sup>



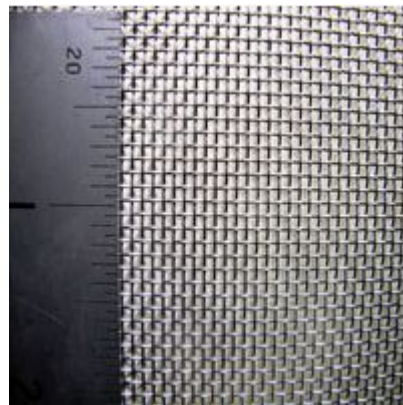
Aperture	1.57mm
Wire Diameter	0.24mm
Open Area	75%
Mesh No.	14
Weight	0.40kg/m <sup>2</sup>

12 Mesh



Aperture	1.67mm
Wire Diameter	0.45mm
Open Area	62%
Mesh No.	12
Weight	1.22kg/m <sup>2</sup>

14 Mesh

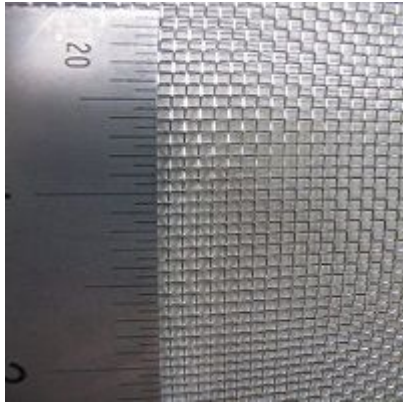


Aperture	1.36mm
Wire Diameter	0.45mm
Open Area	57%
Mesh No.	14
Weight	1.42kg/m <sup>2</sup>

14 Mesh

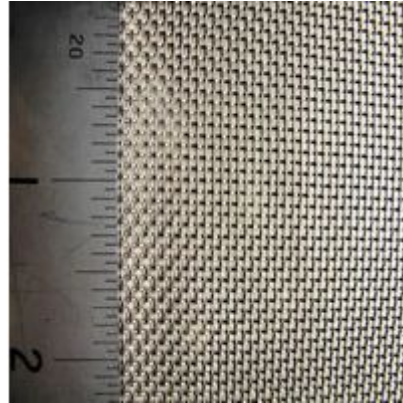
**Anping Yilida Metal Wire Mesh Co.,Ltd**  
**Wire Mesh Development Zone,Anping,Hebei,China 053600**

16 Mesh



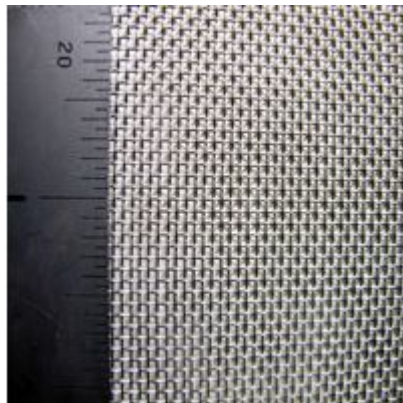
Aperture	1.31mm
Wire Diameter	0.28mm
Open Area	68%
Mesh No.	16
Weight	0.63kg/m <sup>2</sup>

16 Mesh



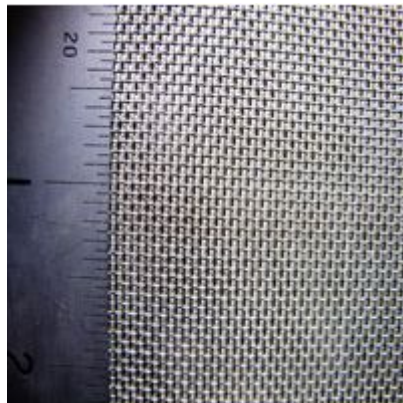
Aperture	1.03mm
Wire Diameter	0.56mm
Open Area	42%
Mesh No.	16
Weight	2.51kg/m <sup>2</sup>

16 Mesh



Aperture	1.19mm
Wire Diameter	0.4mm
Open Area	56%
Mesh No.	16
Weight	1.28kg/m <sup>2</sup>

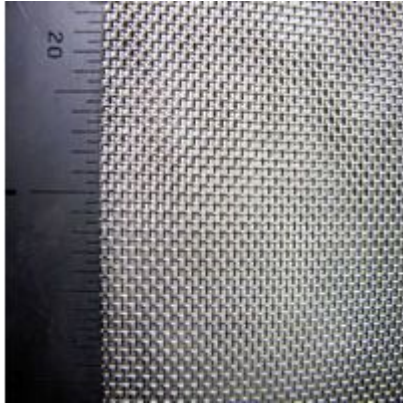
18 Mesh



Aperture	0.961mm
Wire Diameter	0.45mm
Open Area	46%
Mesh No.	18
Weight	1.82kg/m <sup>2</sup>

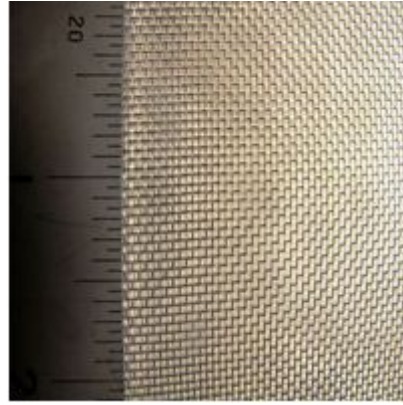
**Anping Yilida Metal Wire Mesh Co.,Ltd**  
**Wire Mesh Development Zone,Anping,Hebei,China 053600**

20 Mesh



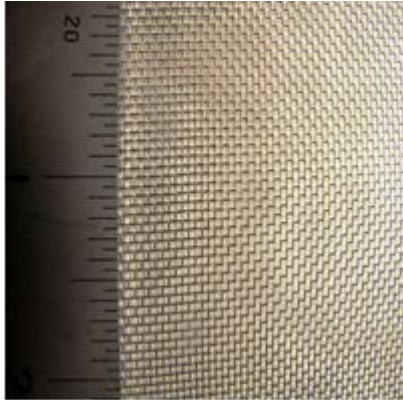
Aperture	0.99mm
Wire Diameter	0.28mm
Open Area	60.8%
Mesh No.	20
Weight	0.78kg/m <sup>2</sup>

22 Mesh



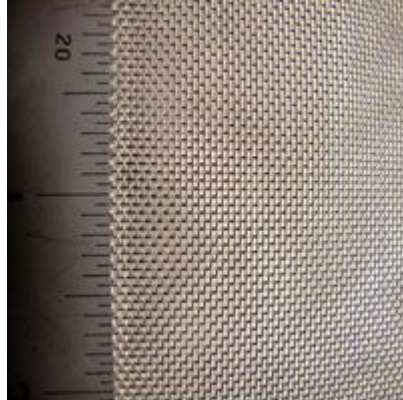
Aperture	0.71mm
Wire Diameter	0.45mm
Open Area	37%
Mesh No.	22
Weight	2.23kg/m <sup>2</sup>

22 Mesh



Aperture	0.94mm
Wire Diameter	0.22mm
Open Area	66%
Mesh No.	22
Weight	0.5324kg/m <sup>2</sup>

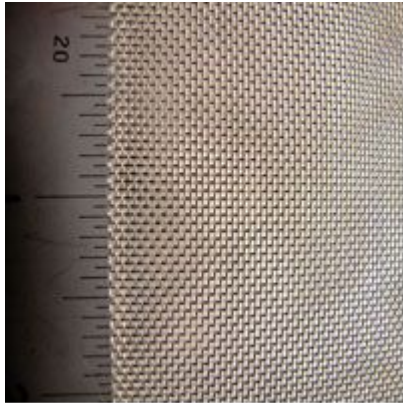
24 Mesh



Aperture	0.81mm
Wire Diameter	0.25mm
Open Area	58%
Mesh No.	24
Weight	0.75kg/m <sup>2</sup>

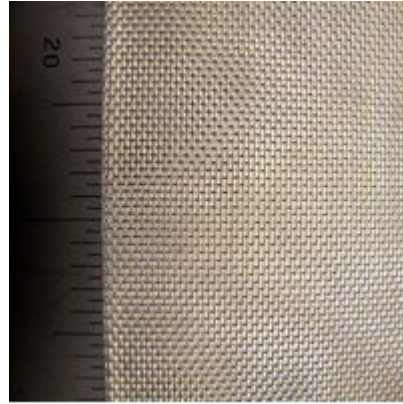
**Anping Yilida Metal Wire Mesh Co.,Ltd**  
**Wire Mesh Development Zone,Anping,Hebei,China 053600**

24 Mesh



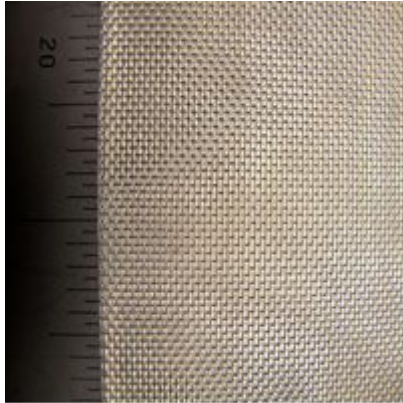
Aperture	0.7mm
Wire Diameter	0.36mm
Open Area	44%
Mesh No.	24
Weight	1.56kg/m <sup>2</sup>

30 Mesh



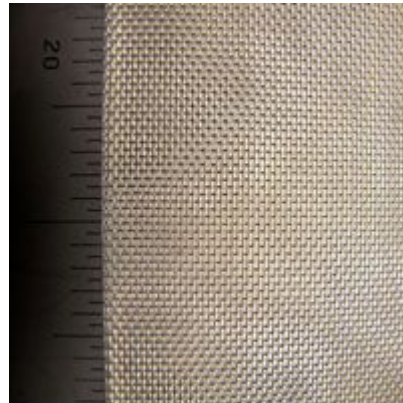
Aperture	0.66mm
Wire Diameter	0.19mm
Open Area	60%
Mesh No.	30
Weight	0.55kg/m <sup>2</sup>

30 Mesh



Aperture	0.69mm
Wire Diameter	0.16mm
Open Area	66%
Mesh No.	30
Weight	0.38kg/m <sup>2</sup>

30 Mesh



Aperture	0.567mm
Wire Diameter	0.28mm
Open Area	58%
Mesh No.	30
Weight	1.18kg/m <sup>2</sup>



**Anping Yilida Metal Wire Mesh Co.,Ltd**  
**Wire Mesh Development Zone,Anping,Hebei,China 053600**

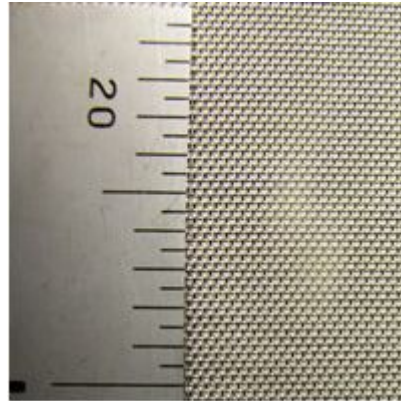
**Fine mesh from 0.5mm to 0.025mm hole size**

40 Mesh



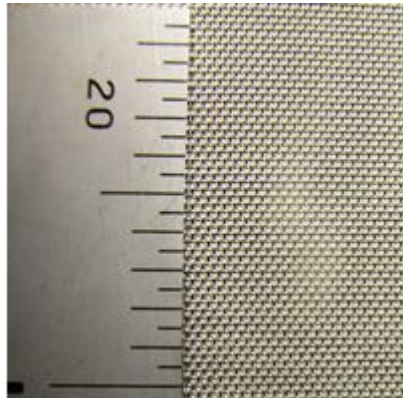
Aperture	0.22mm
Wire Diameter	0.41mm
Open Area	42%
Mesh No.	40
Weight	0.97kg/m <sup>2</sup>

50 Mesh



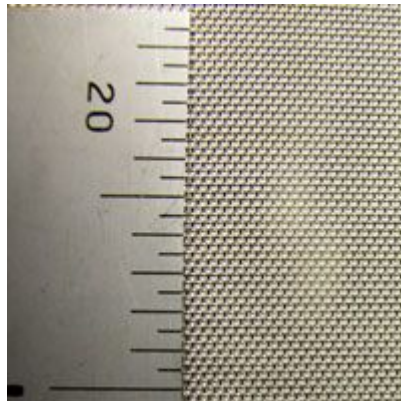
Aperture	0.32mm
Wire Diameter	0.19mm
Open Area	39%
Mesh No.	50
Weight	0.90kg/m <sup>2</sup>

50 Mesh



Aperture	0.348mm
Wire Diameter	0.16mm
Open Area	47%
Mesh No.	50
Weight	0.64kg/m <sup>2</sup>

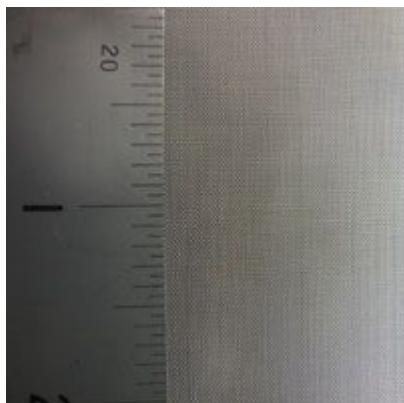
50 Mesh



Aperture	0.31mm
Wire Diameter	0.2mm
Open Area	37%
Mesh No.	50
Weight	1kg/m <sup>2</sup>

**Anping Yilida Metal Wire Mesh Co.,Ltd**  
**Wire Mesh Development Zone,Anping,Hebei,China 053600**

70 Mesh



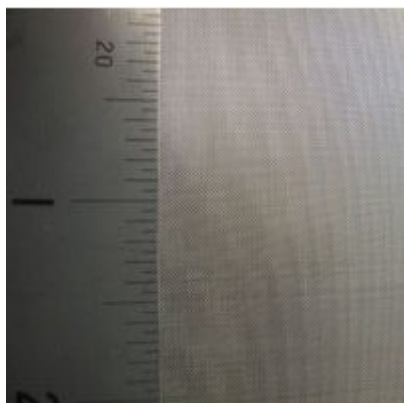
Aperture	0.223mm
Wire Diameter	0.14mm
Open Area	38%
Mesh No.	70
Weight	0.69kg/m <sup>2</sup>

80 Mesh



Aperture	0.178mm
Wire Diameter	0.14mm
Open Area	31%
Mesh No.	80
Weight	0.78kg/m <sup>2</sup>

80 Mesh



Aperture	0.186mm
Wire Diameter	0.13mm
Open Area	34%
Mesh No.	80-TWILL
Weight	0.68kg/m <sup>2</sup>

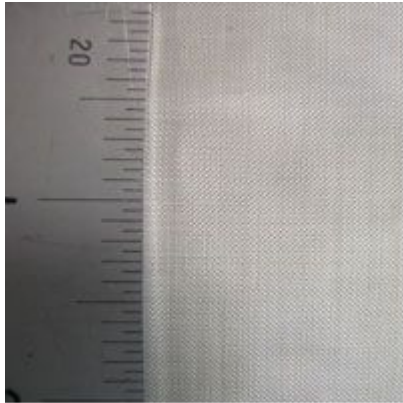
80 Mesh



Aperture	0.158mm
Wire Diameter	0.16mm
Open Area	25%
Mesh No.	80 TWILL
Weight	1.02kg/m <sup>2</sup>

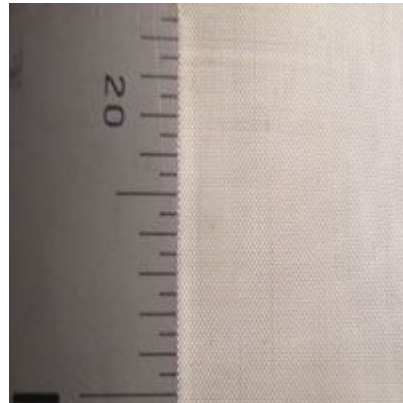
**Anping Yilida Metal Wire Mesh Co.,Ltd**  
**Wire Mesh Development Zone,Anping,Hebei,China 053600**

84 Mesh



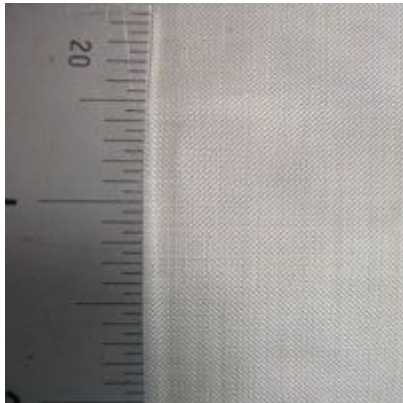
Aperture	0.239mm
Wire Diameter	0.063mm
Open Area	63%
Mesh No.	84
Weight	

100 Mesh



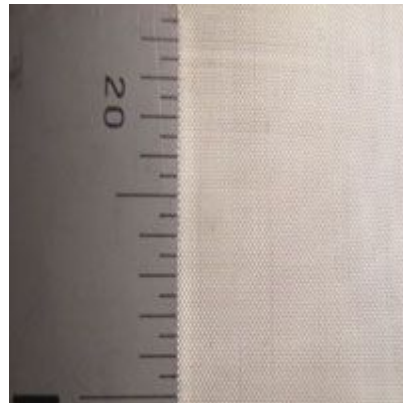
Aperture	0.198mm
Wire Diameter	0.056mm
Open Area	61%
Mesh No.	100
Weight	

84 Mesh



Aperture	0.212mm
Wire Diameter	0.09mm
Open Area	49%
Mesh No.	84
Weight	

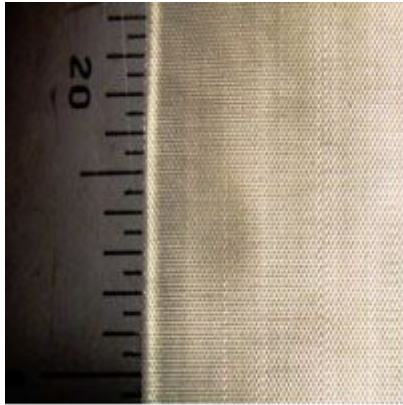
100 Mesh



Aperture	0.154mm
Wire Diameter	0.1mm
Open Area	37%
Mesh No.	100
Weight	0.5kg/m <sup>2</sup>

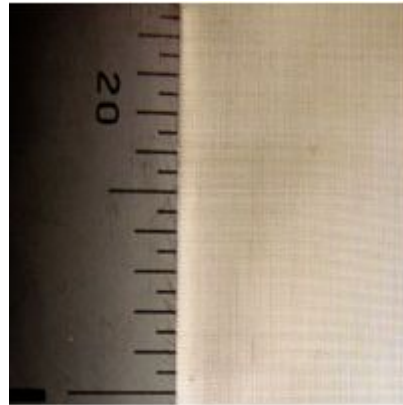
**Anping Yilida Metal Wire Mesh Co.,Ltd**  
**Wire Mesh Development Zone,Anping,Hebei,China 053600**

120 Mesh



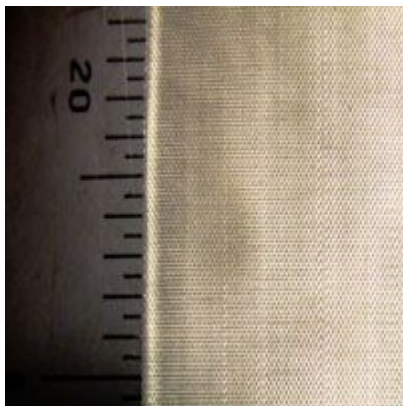
Aperture	0.149mm
Wire Diameter	0.063mm
Open Area	49%
Mesh No.	120
Weight	

130 Mesh



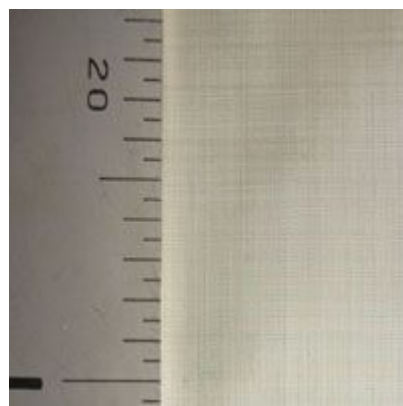
Aperture	0.152mm
Wire Diameter	0.043mm
Open Area	61%
Mesh No.	130
Weight	

120 Mesh



Aperture	0.122mm
Wire Diameter	0.09mm
Open Area	33%
Mesh No.	120
Weight	

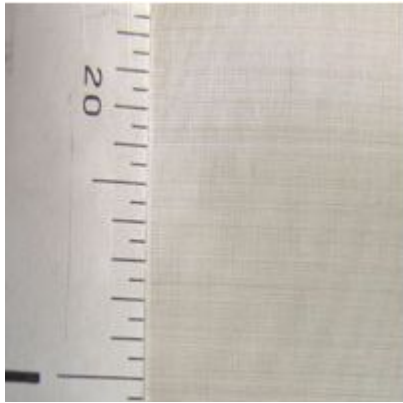
145 Mesh



Aperture	0.123mm
Wire Diameter	0.052mm
Open Area	49%
Mesh No.	145
Weight	

**Anping Yilida Metal Wire Mesh Co.,Ltd**  
**Wire Mesh Development Zone,Anping,Hebei,China 053600**

180 Mesh



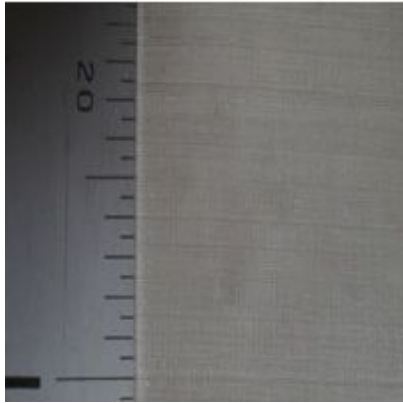
Aperture	0.091mm
Wire Diameter	0.05mm
Open Area	42%
Mesh No.	180
Weight	

200 Mesh



Aperture	0.087mm
Wire Diameter	0.04mm
Open Area	47%
Mesh No.	200
Weight	

200 Mesh



Aperture	0.099mm
Wire Diameter	0.028mm
Open Area	60.77%
Mesh No.	200
Weight	0.0625kg/m <sup>2</sup>

200 Mesh



Aperture	0.077mm
Wire Diameter	0.05mm
Open Area	37%
Mesh No.	200
Weight	

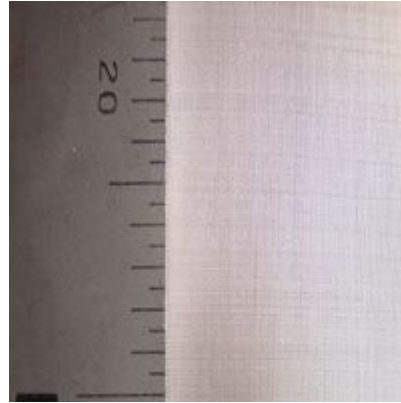
**Anping Yilida Metal Wire Mesh Co.,Ltd**  
**Wire Mesh Development Zone,Anping,Hebei,China 053600**

250 Mesh



Aperture	0.062mm
Wire Diameter	0.04mm
Open Area	37%
Mesh No.	250
Weight	

300 Mesh



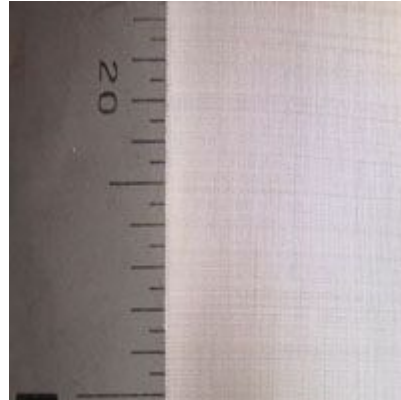
Aperture	0.058mm
Wire Diameter	0.036mm
Open Area	42%
Mesh No.	300
Weight	

270 Mesh



Aperture	0.058mm
Wire Diameter	0.036mm
Open Area	38%
Mesh No.	270
Weight	

300 Mesh



Aperture	0.045mm
Wire Diameter	0.04mm
Open Area	28%
Mesh No.	300
Weight	

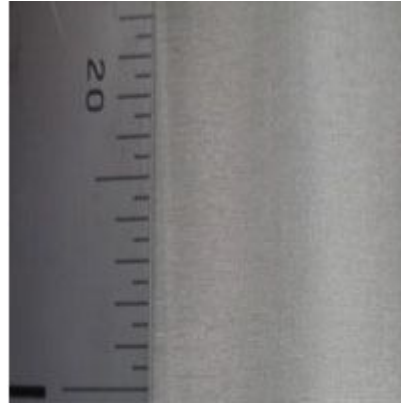
**Anping Yilida Metal Wire Mesh Co.,Ltd**  
**Wire Mesh Development Zone,Anping,Hebei,China 053600**

325 Mesh



Aperture	0.042mm
Wire Diameter	0.036mm
Open Area	29%
Mesh No.	325
Weight	

400 Mesh



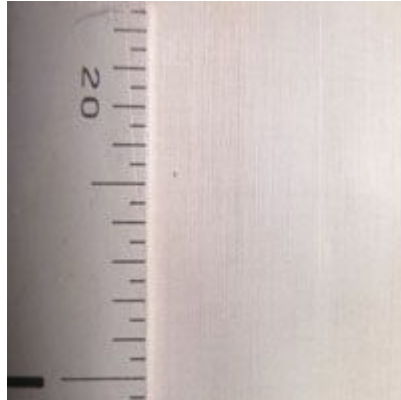
Aperture	0.039mm
Wire Diameter	0.025mm
Open Area	37%
Mesh No.	400
Weight	

400 Mesh



Aperture	0.034mm
Wire Diameter	0.03mm
Open Area	28%
Mesh No.	400
Weight	

500 Mesh



Aperture	0.026mm
Wire Diameter	0.025mm
Open Area	37%
Mesh No.	500 TWILL
Weight	0.16kg/m <sup>2</sup>

**Packing Detail:** Plastic film inside and hessian cloth outside, or as customer's requirements.

**Products range:** usually, manufactured in 30m (up to 200m) long and in width of 1m, 1.2m, 1.5m, 2.0m etc.

**Mesh:** 2 mesh to 635 mesh.