

tLED

tLED-115 Passive LED Heatsink

Features VS Benefits

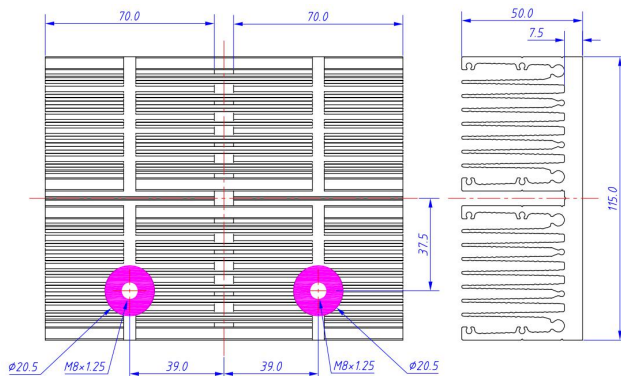
- * Mechanical compatibility with direct mounting of the SMD products to the LED cooler and thermal performance matching the lumen packages.
- * For flood light, street light and high bay designs from 2,000 to 18,000 lumen.
- * Thermal resistance range R_{th} 0.32~1.43°C/W.
- * Product size: L115×H50mm, Other widths on request.
- * Extruded from highly conductive aluminium for optimal thermal performance (AL6063-T5), aluminium 6063-T5 thermal conductivity is higher than ACD12 1.5 times.
- * 2 standard colors - clear anodised - black anodised
- * Waterproof level designs from IP65 to IP67.
- * With the SMD products (3030 , 2835 , 5050.....): Bridgelux , Cree , Edison , Citizen , LG Innot Lumileds , Luminus , Lumens , Nichia , Osram , Prolight Opto , Seoul , Samsung , Sharp.



LED engine and radiator assembly directly Mounting Options

- * Below you find an overview of SMD products which standard fit on the tLED series coolers.
- * In this way mechanical after work and related costs can be avoided, and lighting designers can standardize their designs on a limited number of LED coolers.

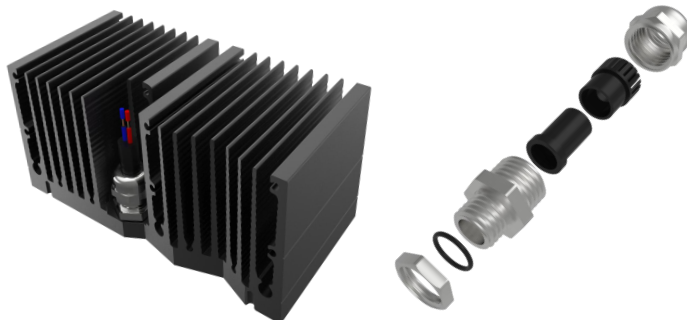
Mounting Options



* Optional compatible lens.

- LEDIL Lens: CS16104_STRADELLA-IP-28;
- Mingfa Tech Lens:
JT-DK100-90-LENS-28H1-U1, Beam Spreads: 60°&90°;
JT-DK100°60-147°72-TPII-M-16H1, Beam Spreads: 60°&147°×47°;
- * Cable feed-through holder for the pink indicator marks.

Waterproof connectors



Not only consider waterproofness of the lens, but also on outside connecting line. Mingfa Tech can provide compatible waterproof connector with tLED heat sink.

Features :

- The claws and seals excellent design, can hold cable firmly and have a wider cable range. Resistant to salt water, weak acid, alcohol, oil, grease and common solvency.
- 1、 Working temperature: Min -40°C to Max 120°C.
- 2、 Body material: Brass nickel plated.
- 3、 Cable range Dia: 3~6mm.
- 4、 Protection degree: IP68

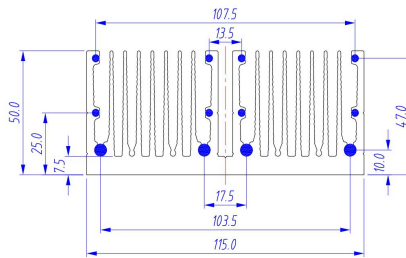
Mingfa tech product number:

- 1、 21000001-04 (M8)
- 2、 21000002-04 (M10)

tLED

tLED-115 Passive LED Heatsink

Mounting Guide



Please find has marked blue holes on the left.

1. Using self tapping screw to mounting. Saving the mounting holes process cost.
2. It can mounting enclosure of fixed lighting and tight holder or other lighting parts.

Product NO. & Deta table

Example: tLED-1157050-B

Example: tLED-115 **1** 50 - **2**

- 1** Width (mm)
- 2** Anodising Color
 - B-Black
 - C-Clear
 - Z-Custom

Notes:

- Mentioned models are an extraction of full product range.
- For specific mechanical adaptations please contact MingfaTech.
- MingfaTech reserves the right to change products or specifications without prior notice.

| Product pictures | Model No. | Size (mm) L×W×H | Material | Weight (g) | Design power (Ths-amb,50℃) | Cooling area (mm ²) | Finish |
|------------------|-----------------|--------------------|-----------|------------|-------------------------------|------------------------------------|----------------|
| | tLED-1157050-B | 115×70×50 | AL6063-T5 | 445.0 | 35.0 | 125,884.0 | Black Anodized |
| | tLED-11514850-B | 115×148×50 | AL6063-T5 | 924.0 | 65.0 | 262,215.0 | Black Anodized |
| | tLED-11522650-B | 115×226×50 | AL6063-T5 | 1,400.0 | 98.0 | 398,545.0 | Black Anodized |
| | tLED-11530450-B | 115×304×50 | AL6063-T5 | 1,883.0 | 125.0 | 534,876.0 | Black Anodized |
| | tLED-11538250-B | 115×382×50 | AL6063-T5 | 2,362.0 | 156.0 | 671,206.0 | Black Anodized |