



eLED

### eLED-7080 Modular Passive LED Star Heat Sink $\Phi$ 70mm

#### Features VS Benefits

\* Mechanical compatibility with direct mounting of the LED modules to the LED cooler and thermal performance matching the lumen packages.

\*Thermal resistance range  $R_{th}$  1.77°C/W.

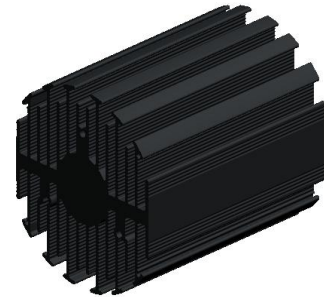
\* Modular design with mounting holes foreseen for direct mounting of a wide range of LED modules and COB's:

\* Diameter 70mm - Standard height 80mm , Other heights on request.

\* Extruded from highly conductive aluminum.

2 standard colors - clear anodised - black anodised

Zhaga Book 3 Spot Light Modules Edison ,Xicato ,Bridgelux , Osram ,Citizen ,Lumileds ,Cree , Tridonic , Vossloh-Schwabe ,Seoul ,LG ,Lustrous ,Prolight ,Samsung ,SHARP , Luminus .Philips



- 1) Xicato XSM, XIM,XTM;(XSA-307,XSA-308)
- 2) Bridgelux ES Rectangle Array Series Vero 13 and Vero18 COB engines.
- 3) Citizen CLL022-CLU024, CLL032-CLU034;
- 4) Cree XLamp CXA13xx, CXA15xx,CSA18xx;
- 5) Lumileds Luxeon COB's 1203, 1204, 1205, Luxeon K arrays K12, K16;
- 6) Osram Soleriq S13, S19, E30
- 7) Seoul Semiconductor ZC6, ZC12, ZC18,ZC25;
- 8) Tridonic TALEXXmodule SLE nodules engines.
- 9) LG Innotek LEMWM18 10W, 13W, 17W
- 10) Edison EdiLex SLM and EdiLex II COB LED engines.
- 11) Lustrous LUSTRON 6 series LL604F, LL608D, LL613F, LL620F
- 12) Prolight Opto PABS, PABA, PACB, PANA
- 13) Samsung LC013,LC019,LC026 COB LED engines.
- 14) SHARP Mini Zenigata,Tiger Zenigataand and Mega Zenigata LED engines.
- 15) Philips Fortimo SLM LED engines.
- 16) Vossloh-Schwabe LUGA Shop LED engines.
- 17) Luminus C##9,C##14 LED engines.



#### Order Information

Example:eLED-7080-B-#

Example:eLED-70 **1** - **2** - **3**

**1** Hight (mm)

**2** Anodising Color

B-Black

C-Clear

Z-Custom

**3** Mounting Options - see graphics for details Combinations available

Ex.order code - 12

means option 1 and 2 combined

MingFa recommends the use of a high thermal conductive interface between the LED module and the LED cooler. Either thermal grease, a thermal pad or a phase change thermal pad thickness 0.1-0.15mm is recommended.

Tel: +86-769-39023131

E-fax: +86-(020)28819702 ext22122

Http://www.heatsinkled.com

Http://www.mingfatech.com



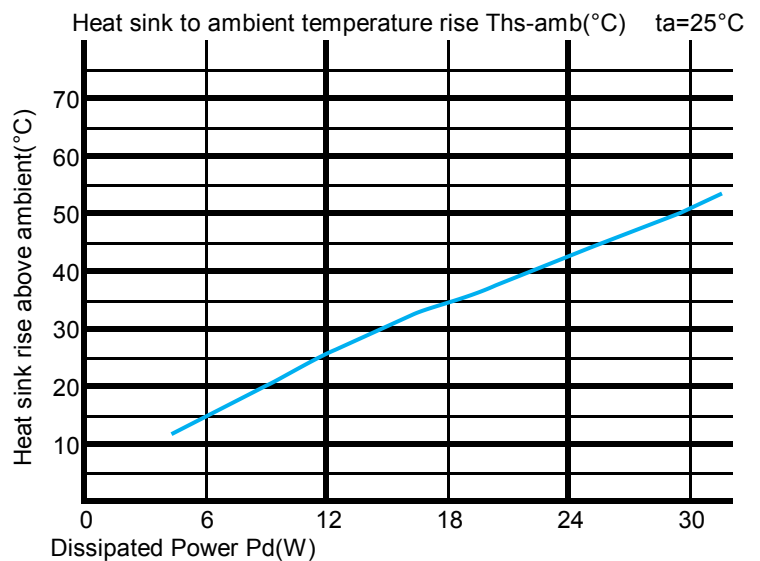
eLED

eLED-7080 Modular Passive LED Star Heat Sink  $\Phi 70\text{mm}$

The thermal data table

	 <i>eLED-7080</i>
<b>Model No.</b>	<b>eLED7080</b>
<b>Size</b>	<b><math>\Phi 70 \times 80\text{mm}</math></b>
<b>Material</b>	<b>AL6063-T5</b>
<b>Finish</b>	<b>Black Anodized</b>
<b>Weight(gr)</b>	<b>329</b>
<b>Thermal Wattage</b>	<b>28.2W</b>
<b>Heatsink<math>\Theta_{s-a}^2</math></b>	<b>115563</b>
<b>Heat Sink T<sub>Rise Above Ambient</sub> (<math>^{\circ}\text{C}/\text{W}</math>)</b>	<b>1.77</b>

Dissipated Power Pd(W)	Heat sink to ambient thermal resistance Rhs-amb ( $^{\circ}\text{C}/\text{W}$ )	
	eLED-7080	
6	2.5	15
12	2.2	26
18	1.9	34
24	1.8	43
30	1.7	51



Notes:

- Mentioned models are an extraction of full product range.
- For specific mechanical adaptations please contact MingfaTech.
- MingfaTech reserves the right to change products or specifications without prior notice.