



for

LED

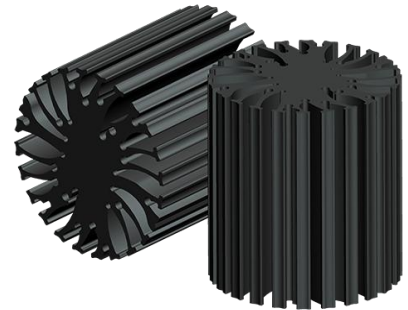


*EtraLED*

**EtraLED-PHI-4850 for Philips Modular Passive Star LED Heat Sink  $\Phi$ 48mm**

### Features VS Benefits

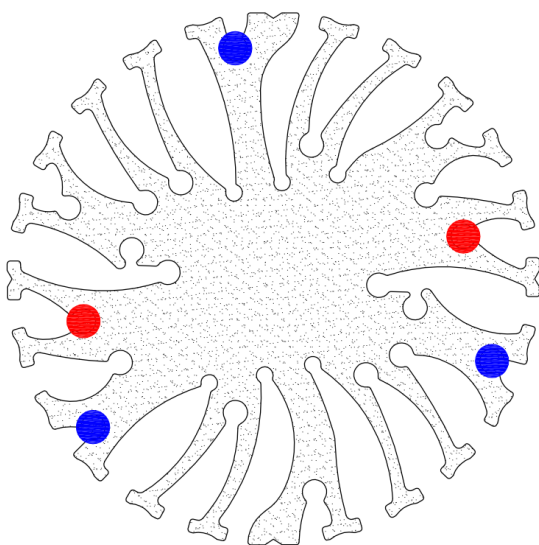
- \* The EtraLED-PHI-4850 Philips Modular Passive LED Coolers are specifically designed for luminaires using the Philips LED engines.
- \* Mechanical compatibility with direct mounting of the LED engines to the LED cooler and thermal performance matching the lumen packages.
- \* For spotlight and downlight designs from 600 to 1400 lumen.
- \* Thermal resistance range  $R_{th}$  4.2°C/W.
- \* Modular design with mounting holes foreseen for direct mounting of Philips SLM engines.
- \* Diameter 48mm - standard height 50mm Other heights on request.
- \* Extruded from highly conductive aluminum.



### Zhaga LED engine and radiator assembly is a unified future international standardization

- \* Below you find an overview of Philips COB's and LED modules which standard fit on the EtraLED coolers.
- \* In this way mechanical after work and related costs can be avoided, and lighting designers can standardize their designs on a limited number of LED coolers.

**PHILIPS**



Philips Spot Light LED engines for which Zhaga book3 LED Modules holders are available.

#### Philips Fortimo SLM LED modular Gen2:

- Fortimo LED SLM 800LM 827 L13 G2;
- Fortimo LED SLM 800LM 830 L13 G2;
- Fortimo LED SLM 800LM 835 L13 G2;

- Fortimo LED SLM 800LM 840 L13 G2;
- Fortimo LED SLM 800LM 927 L13 G2;
- Fortimo LED SLM 800LM 930 L13 G2;

- Fortimo LED SLM 1100LM 827 L13 G2;
- Fortimo LED SLM 1100LM 830 L13 G2;
- Fortimo LED SLM 1100LM 835 L13 G2;
- Fortimo LED SLM 1100LM 840 L13 G2;

#### Philips Fortimo SLM LED modular Gen4:

- Fortimo LED SLM 1100LM 827 L9 G4;
- Fortimo LED SLM 1100LM 830 L9 G4;
- Fortimo LED SLM 1100LM 840 L9 G4;

- Fortimo LED SLM 1100LM 827 L13 G4;
- Fortimo LED SLM 1100LM 830 L13 G4;
- Fortimo LED SLM 1100LM 840 L13 G4;

#### NO`1: Blue indicator marks:

Direct mounting with machine screws M3x8mm;

NO`2: With Zhaga Book 3 LED holder for red indicator marks.

Direct mounting with machine screws M3x8mm;

Tel:+86-769-39023131

E-fax:+86-(020)28819702 ext:22122

Email:sales@mingfatech.com

Http://www.heatsinkled.com

Http://www.mingfatech.com





for

LED



*EtraLED*

EtraLED-PHI-4850 for Philips Modular Passive Star LED Heat Sink  $\Phi$ 48mm

**Mounting Options and Drawings & Dimensions**

Example: EtraLED-PHI-4850-B-3

Example: EtraLED-PHI-48 **1** - **2** - **3**

**1** Height (mm)

**2** Anodising Color

B-Black

C-Clear

Z-Custom

**3** Mounting Options - see graphics for details Combinations available

Ex.order code - 12

means option 1 and 2 combined

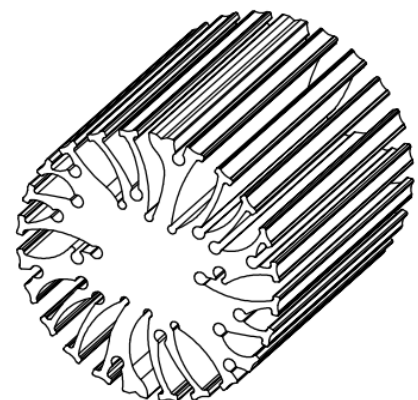
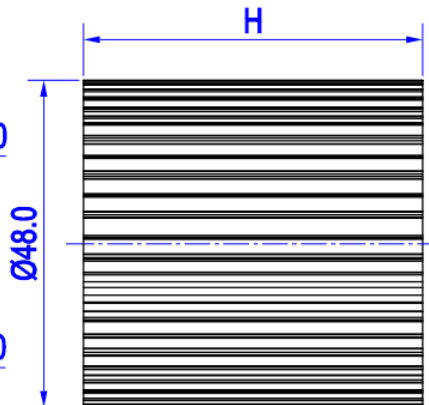
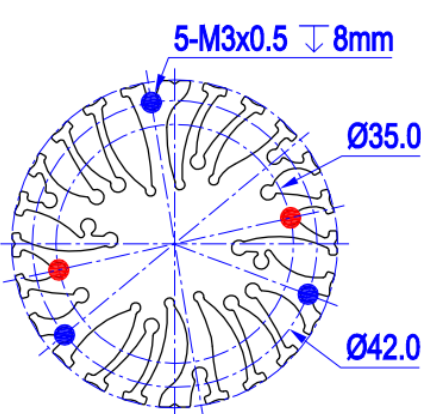
**Notes:**

- Mentioned models are an extraction of full product range.
- For specific mechanical adaptations please contact MingfaTech.
- MingfaTech reserves the right to change products or specifications without prior notice.

PHILIPS



MOUNTING OPTION	Module type	Holder NO.	THREAD	THREAD DEPTH	THREAD HOLE DISTANCE
1	Fortimo SLM	/	M3	8mm	35.0mm/ 2-@180°
2		/	M3	8mm	42.0mm/ 3-@120°



*EtraLED*

EtraLED-PHI-4850 for Philips Modular Passive Star LED Heat Sink  $\Phi 48\text{mm}$

The thermal data table

	 <i>EtraLED-4850</i>
<b>Model No.</b>	<b>EtraLED-PHI-4850</b>
<b>Size</b>	<b><math>\Phi 48 \times H 50\text{mm}</math></b>
<b>Material</b>	<b>AL6063-T5</b>
<b>Finish</b>	<b>Black Anodized</b>
<b>Weight(gr)</b>	<b>134.0</b>
<b>Thermal Wattage</b>	<b>12.0W</b>
<b>Heatsink <math>\Theta_{s-a^2}</math></b>	<b>36868</b>
<b>Heat Sink T Rise Above Ambient</b>	<b>4.2</b>

Dissipated Power Pd(W)	Pd = Pe x (1-ηL)	Heat sink to ambient thermal resistance Rhs-amb (°C/W)	Heat sink to ambient temperature rise Ths-amb (°C)
		EtraLED-PHI-4850	EtraLED-PHI-4850
2.5		5.6	14.0
4.5		5.3	24.0
7.0		4.6	32.0
9.5		4.3	41.0
12.0		4.1	49.0
18.0		3.7	65.0

