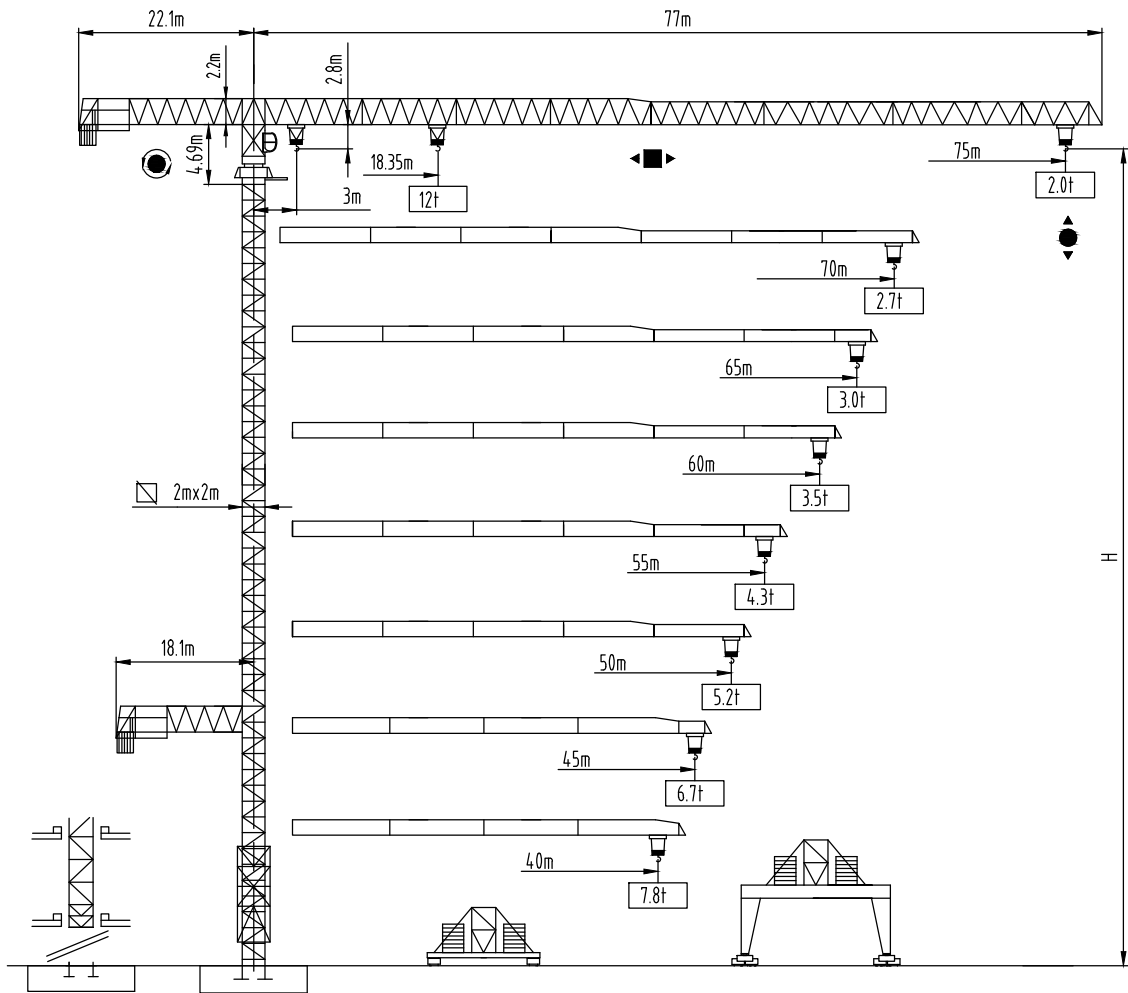


Autodesk



沈阳三洋建筑机械有限公司
SHENYANG SANYO BUILDING MACHINERY CO., LTD

TOWER CRANE QTZ型220tm
(R75/20C)



Autodesk

Autodesk

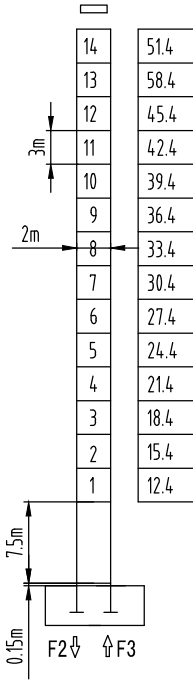
Autodesk



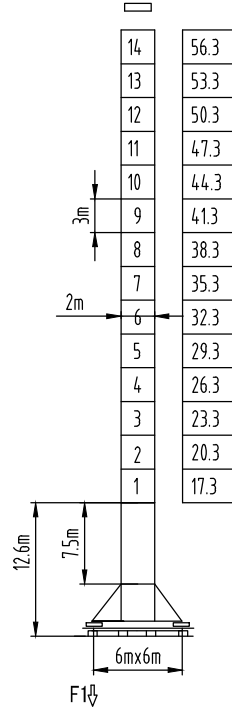
塔身截面 Mast □ 2mx2m

40-75m

H (m)



H (m)



F2	● 134t	■ 139t
F3	● 71t	■ 87t
	82t	

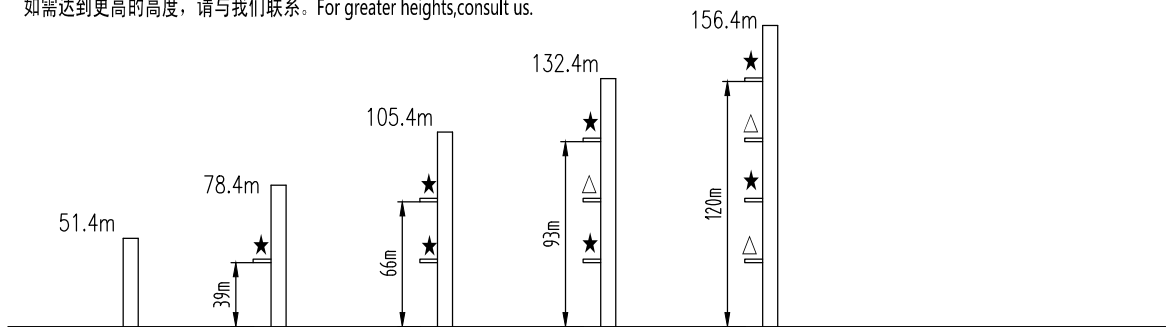
F1	● 89t	■ 93t
	99t	

固定式附着高度 Anchoring height of stationary crane

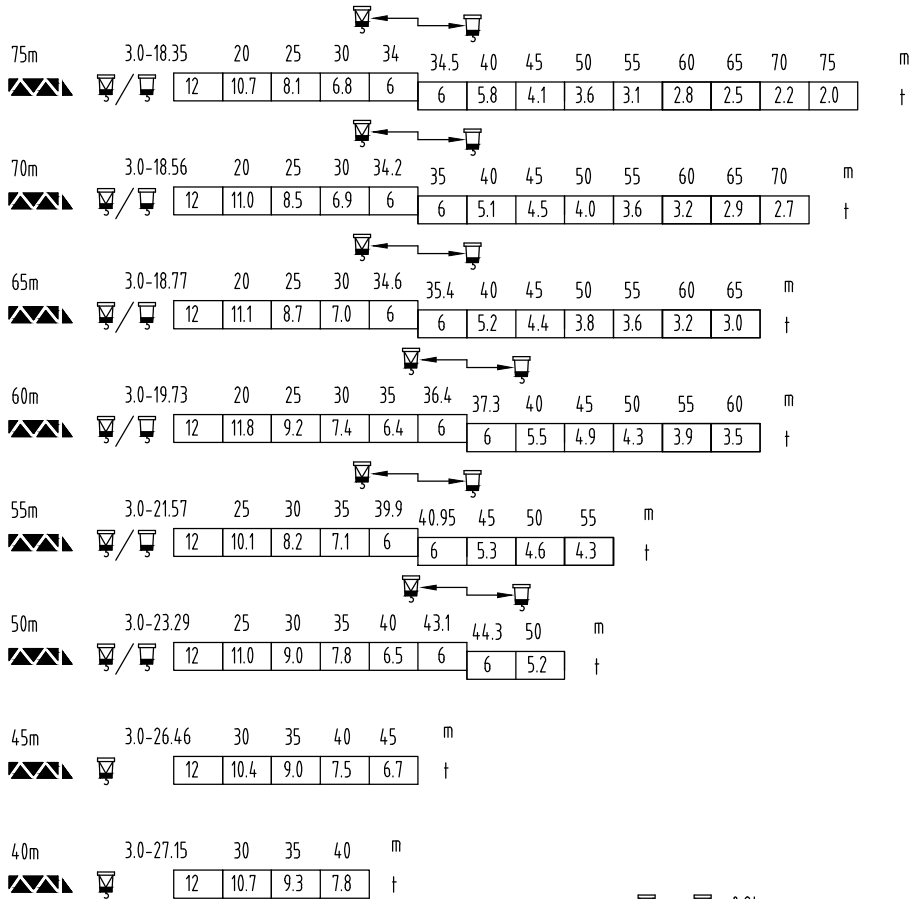
★ 紧固附着框 Anchorages tightened

△ 放松附着框 Anchorages released

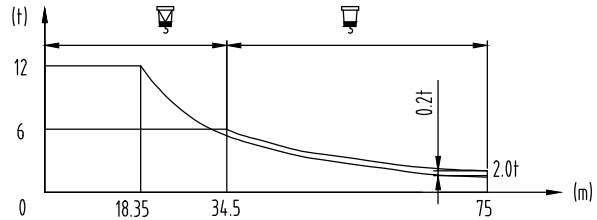
如需达到更高的高度，请与我们联系。For greater heights, consult us.



载荷特性 Load diagrams

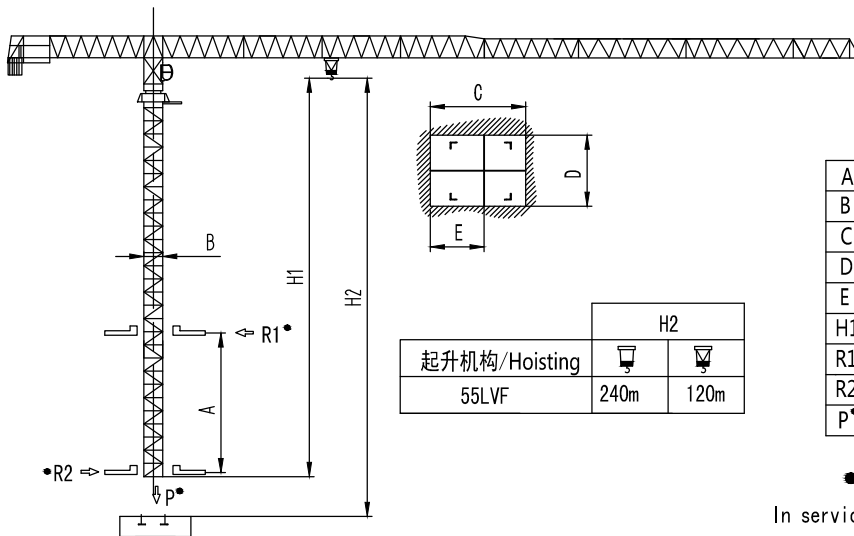


$\text{trolley} = \text{hook} - 0.2t$



标准小车可使用 2/4倍率绳 standard trolley 2/4 fall.
 使用四倍率时, 应从二倍率的载荷中减去0.2吨
 When using trolley subtract 0.2t from the loads

内爬塔机 Climbing crane



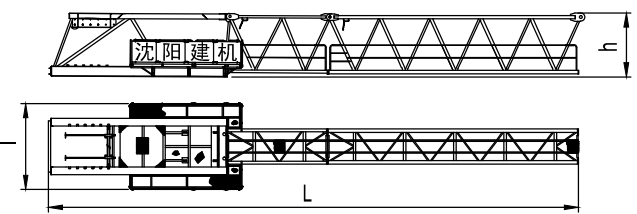
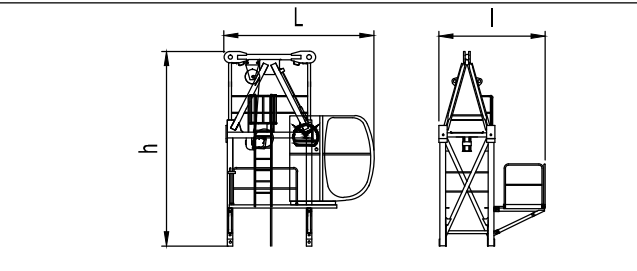
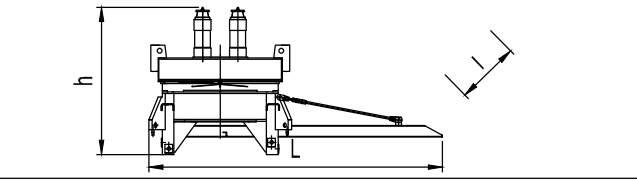
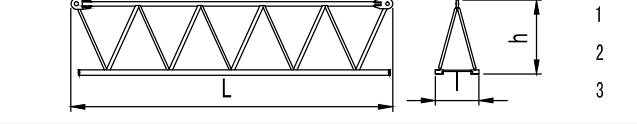
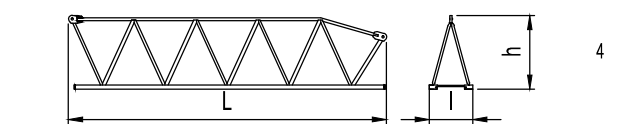
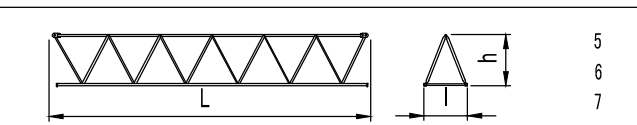
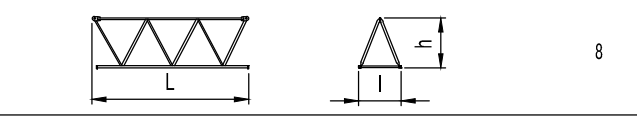
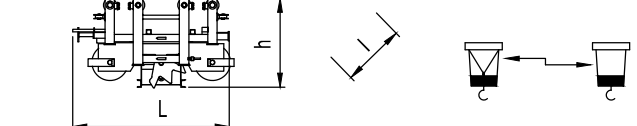
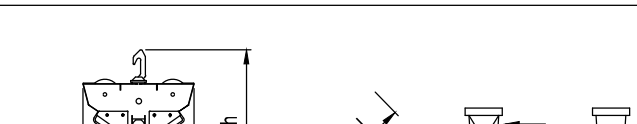
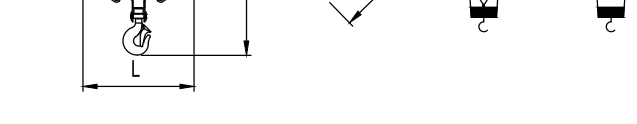
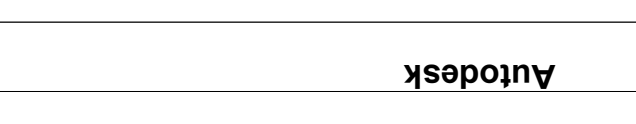

起升机构/Hoisting	H2	
	55LVF	240m

A	12m-18m
B	2m
C	2.58m
D	2.17m
E	1.495m
H1	45.6m
R1*	33600Kg
R2*	29500Kg
P*	12500Kg

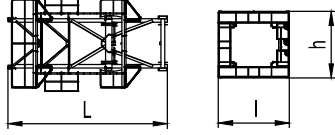
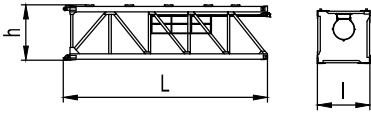
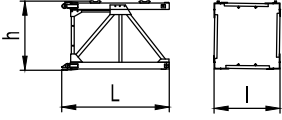
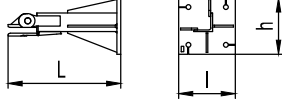
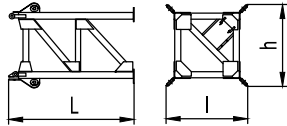
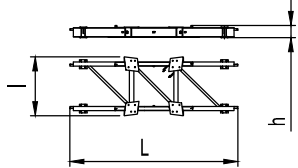
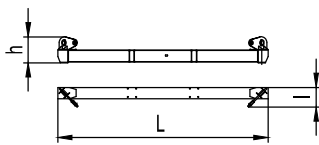
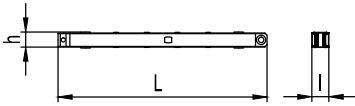
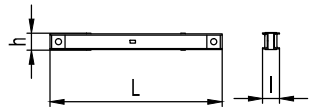
* 工作状态无系数
 In service without coefficient

Autodesk

外形尺寸重量表 Dimensions weights

塔机回转部分 Slewing		L(m)	l(m)	h(m)	Kg
平衡臂 Counter-jib		21	3.43	2.55	8994
塔头 Cat-head		4.1	3.05	5.3	3900
回转机构 Slewing mechanism		5.1	2.5	2.65	7500
起重臂节 Jib section		1	10.34	1.4	3954
		2	10.31	1.4	3320
		3	10.28	1.4	2511
起重臂节 Jib section		4	10.23	1.4	2374
起重臂节 Jib section		5	10.23	1.4	1759
		6	10.17	1.4	1457
		7	10.15	1.4	971
起重臂节 Jib section		8	5.15	1.4	582
变幅小车 Trolley		1.82	1.7	0.95	485
吊钩滑轮组 Hook assembly		1.41	0.42	1.77	460

Autodesk

顶升装置 Telescoping equipment		L(m)	l(m)	h(m)	Kg
顶升套架 Telescopic cage		7.26	4.3	4.05	4825
塔身部分 Mast		L(m)	l(m)	h(m)	Kg
基础节 Basic mast		7.76	2.0	2.1	4320
标准节 Standard mast		3.26	2.2	2.2	1820
底部 Base					
固定支脚 Fixing angles		1.2	0.6	0.6	295
底架塔节 Chassis mast		3.82	2.48	2.48	3260
底架纵梁 Side member		7.14	2.51	0.52	2009
底架横梁 Traverse		6.38	0.58	0.8	1410
底架撑杆 Brace rod		4.45	0.35	0.32	710
底架水平杆 Horizontal member		2.44	0.22	0.24	151

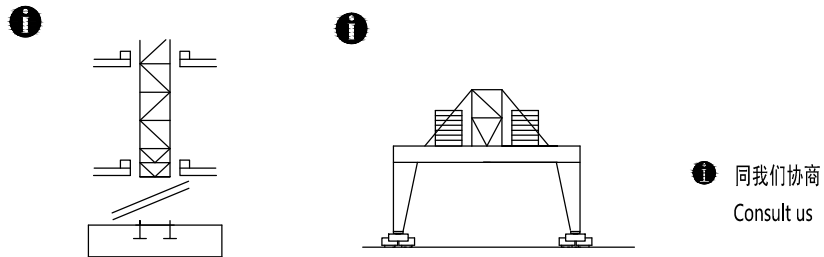
Autodesk

机构特性 Mechanisms specification			C					C					 m	Kw	
起升 Hoisting		55LVF	m/min	0-4.8	0-20	0-40	0-60	0-80	0-2.4	0-10	0-20	0-30	0-40	500	55
		t	6	6	6	3	1.5	12	12	12	6	3			
变幅 Trolleying		5.5TVF	m/min	0-50										5.5	
回转 Slewing		9SVF	r/min	0-0.8										9x3	
		14.5SVT												14.5Nm x 3	
行走 Travelling		5.2TRVF	m/min	0-15										5.2x4	
电源 Power Supply		380V 50Hz / 440V 60Hz													
KVA 供电容量 Necessary Electric Power		14.0KVA													

平衡臂配重
Counter-jib ballast

		(t)
75m	22.1m	21.66
70m	22.1m	20.33
65m	22.1m	18.78
60m	22.1m	17.32
55m	22.1m	15.17
50m	22.1m	14.06
45m	18.1m	18.05
40m	18.1m	16.72

可变换的其它安装方式
Mounting possibilities



F 反力 Reactions	<ul style="list-style-type: none"> ● 工作状态 In service ■ 非工作状态 Out of service 	<ul style="list-style-type: none"> ⊕ 自重 Self-load 	不带载荷及配重，最大臂长及标准高度时的自重。 Without load and counter-weight with longest jib and standard height
-------------------	---	--	--