



BuLED

BuLED-50E-CIT LED light accessory to replace MR16 fitting for Citizen modulars

Features VS Benefits

- * BuLED-50E LED light accessory includes one LED cooler and one LED housing to be assembled with Citizen modules to replace MR16.
- * Mechanical compatibility with direct mounting of the LED engines to the LED cooler and thermal performance matching the lumen packages.
- * For spotlight and downlight designs from 500 to 1800 lumen.
- * Thermal resistance range Rth 3.7°C/W.
- * Heatsink Diameter 48mm - Standard height 50mm , Other heights on request.
- * Housing Diameter 50mm - Standard height 50mm , Other heights on request.
- * Modular design with mounting holes foreseen for direct mounting of Citizen CLL02x, and CLL03x LED engines.
- * Extruded from highly conductive aluminum.

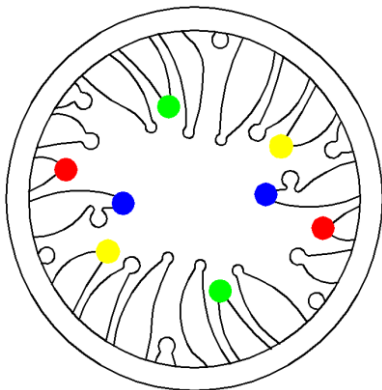
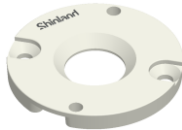


Zhaga LED engine and radiator assembly is a unified future international standardization

- * Below you find an overview of Citizen COB's and LED modules which standard fit on the BuLED-50E series.
- * In this way mechanical after work and related costs can be avoided, and lighting designers can standardize their designs on a limited number of Star LED Heat Sinks.



A.A.G. STUCCHI
Ideas are made of light



Citizen LED Modules directly Mounting Options

CLL020~022 and CLU024 LED engines.

- | | |
|------------------------|------------------------|
| CLU020-1202A5-xxxxxxx; | CLU022-1202A5-xxxxxxx; |
| CLU020-1203A5-xxxxxxx; | CLU022-1203A5-xxxxxxx; |
| CLU020-1204A5-xxxxxxx; | CLU022-1204A5-xxxxxxx; |
| CLU024-1202B8-xxxxxxx; | |
| CLU024-1203B8-xxxxxxx; | |
| CLU024-1204B8-xxxxxxx; | |

With Zhaga Book 11 LED holder

BJB holder:47.319.6060.50;

AAG.STUCCHI holder:8100-G2

Green indicator marks.

Mounting with machine screws M3x6.5mm;

Without LED holders

Blue indicator marks.

Direct mounting with machine screws M3x6.5mm;

CLL030~032 LED engines.

- | | |
|------------------------|------------------------|
| CLL030-1205A5-xxxxxxx; | CLL032-1205A5-xxxxxxx; |
| CLL030-1206A5-xxxxxxx; | CLL032-1206A5-xxxxxxx; |

With Shinland LED holders.

CLL030-HD-B;

Red indicator marks.

Direct mounting with machine screws M3x6mm;

Without LED holders for yellow indicator marks.

Direct mounting with machine screws M3x6.5mm;

Tel:+86-769-39023131

E-fax:+86-(020)28819702 ext:22122

Email:sales@mingfatech.com

Http://www.heatsinkled.com

Http://www.mingfatech.com





BuLED

BuLED-50E-CIT LED light accessory to replace MR16 fitting for Citizen modulars

Mounting Options and Drawings & Dimensions

Example: BuLED-50E-CIT-B-1,2

Example: BuLED-50E-CIT- **1** - **2**

- 1** Anodising Color
 - B-Black
 - C-Clear
 - Z-Custom

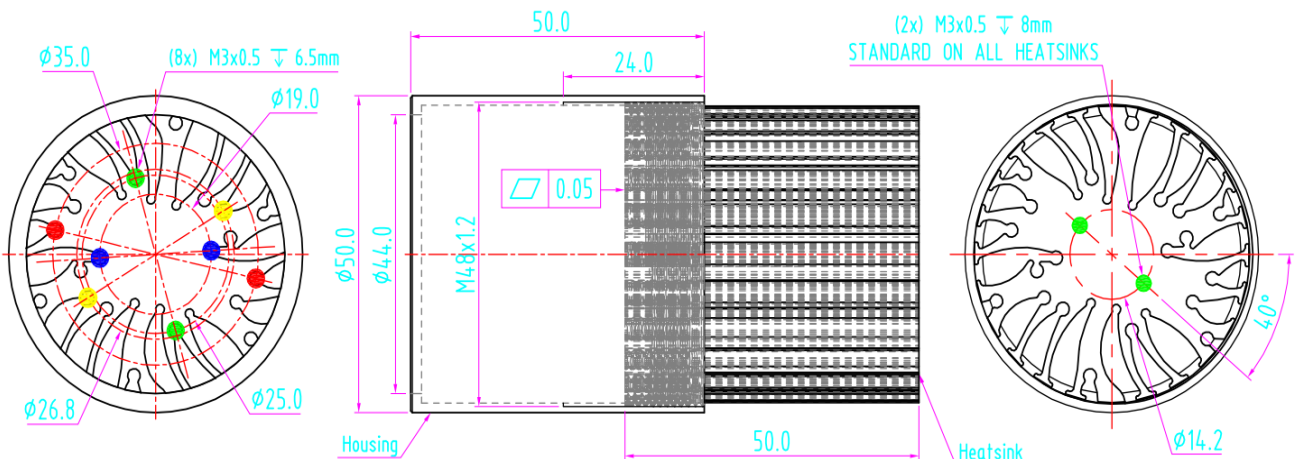
- 2** Mounting Options - see graphics for details Combinations available
 - Ex.order code - 12 means option 1 and 2 combined

Notes:

- Mentioned models are an extraction of full product range.
- For specific mechanical adaptations please contact MingfaTech.
- MingfaTech reserves the right to change products or specifications without prior notice.



MOUNTING OPTION	Module type	Holder NO.	THREAD	THREAD DEPTH	THREAD HOLE DISTANCE
1	CLL02x	/	M3	6.5mm	19.0mm/ 2-@180°
2	CLL02x	AAG.STUCCHI 8100-G2 BJB 47.313.6060.50	M3	6.5mm	25.0mm/ 2-@180°
3	CLL03x	/	M3	6.5mm	26.8mm/ 2-@180°
4	CLL03x	Shinland CLL030-HD-B	M3	6.5mm	35.0mm/ 2-@180°



BuLED

BuLED-50E-CIT LED light accessory to replace MR16 fitting for Citizen modulars

The thermal data table

	 <i>BuLED</i>
Model No.	BuLED-50E-CIT
Heatsink Size	Φ48xH50mm
Housing Size	Φ50xH50mm
Material	AL6063-T5
Finish	Black Anodized
Weight(g)	160.0
Thermal Wattage	15.0W
HeatsinkOs-a²	36868
Thermal Resistance (°C/W)²	3.7

Dissipated Power Pd(W)	Pd = Pe x (1-ηL)	
	Heat sink to ambient thermal resistance Rhs-amb (°C/W)	Heat sink to ambient temperature rise Ths-amb (°C)
	BuLED-50E-CIT	BuLED-50E-CIT
2.5	5.6	14.0
4.5	5.3	24.0
7.0	4.6	32.0
9.5	4.3	41.0
12.0	4.1	49.0
15.0	3.7	55.0

