

SimpoLED

SimpoLED-SHA-160150 for Sharp Modular Passive LED Cooler Φ 160mm

Features VS Benefits

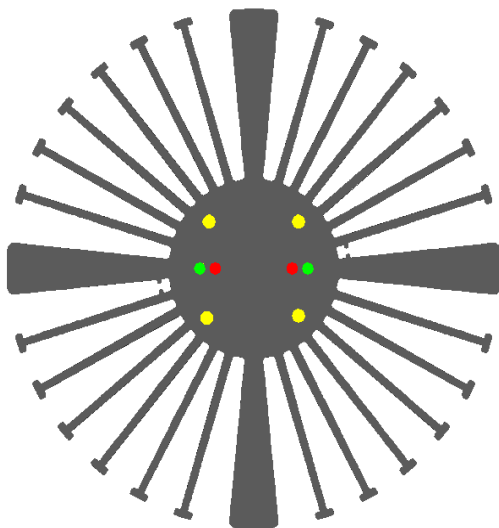
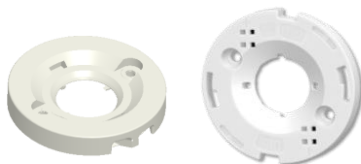
- * The SimpLED-SHA-160150 SHARP Modular Passive LED Coolers are specifically designed for luminaires using the SHARP LED engines.
- * Mechanical compatibility with direct mounting of the LED engines to the LED cooler and thermal performance matching the lumen packages.
- * For spotlight and downlight designs from 2500 to 15000 lumen.
- * Thermal resistance range R_{th} 0.42°C/W.
- * Modular design with mounting holes foreseen for direct mounting of SHARP Kaku Zenigata and Mega Zenigata LED engines.
- * Diameter 160mm - standard height 150mm Other heights on request.
- * Extruded from highly conductive aluminum.



Zhaga LED engine and radiator assembly is a unified future international standardization

- * Below you find an overview of SHARP engines COB's and LED modules which standard fit on the SimpLED coolers.
- * In this way mechanical after work and related costs can be avoided, and lighting designers can standardize their designs on a limited number of LED coolers.

SHARP



Sharp LED Modules Mounting indicator marks overview

Mega Zenigata LED modules name:

GW6DME27XFC;
 GW6DME30XFC;
 GW6DME40XFC;
 GW6DME50XFC;
 GW6DGE27XFC;
 GW6DGE30XFC;
 GW6DGE40XFC;
 GW6DGE50XFC;

Zhaga Book3 connector:

BJB Spotlight connector:47.319.2011.50;
 TE Connectivity:2213130-2
 Direct mounting with machine screws M3x8mm;
 Green indicator marks

Sharp Kaku Zenigata Modules Mounting Options.

GW7PMS30RFC;
 GW7PMS42RFC;

Direct mounting with machine screws M3x6mm;
 Yellow indicator marks.



SimpoleD

SimpoleD-SHA-160150 for Sharp Modular Passive LED Cooler Φ 160mm

Mounting Options and Drawings & Dimensions

Example: SimpoleD-SHA-160150-B-3

Example: SimpoleD-SHA-160 **1** - **2** - **3**

1 Height (mm)

2 Anodising Color

B-Black

C-Clear

Z-Custom

3 Mounting Options - see graphics for details Combinations available

Ex.order code - 12

means option 1 and 2 combined

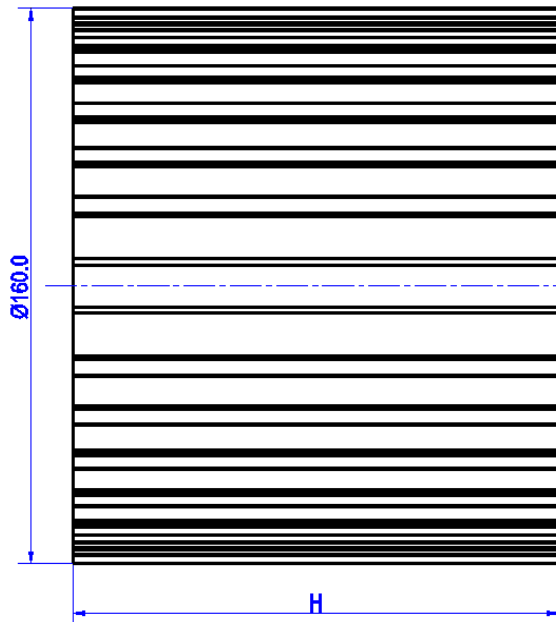
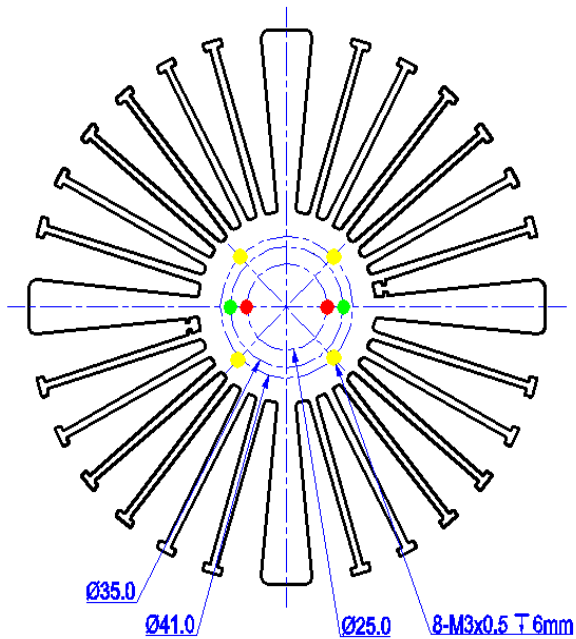
Notes:

- Mentioned models are an extraction of full product range.
- For specific mechanical adaptations please contact MingfaTech.
- MingfaTech reserves the right to change products or specifications without prior notice.

SHARP



MOUNTING OPTION	Module type	Holder NO.	THREAD	THREAD DEPTH	THREAD HOLE DISTANCE
2	Mini ZENIGATA	BJB:(47.319.6180.50)	M3	6mm	25.0mm/ @180°
1	Mega ZENIGATA Tiger Zenigataand	BJB:(47.319.2011.50)	M3	6mm	35.0mm/ @180°
		Type :(2213130-2)			
3	Kaku Zenigata	/	M3	6mm	(41.0mmx41.0mm)x2



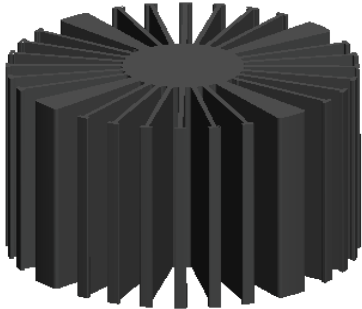
Tel:+86-769-39023131
 E-fax:+86-(020)28819702 ext:22122
 Email:sales@mingfatech.com
 Http://www.heatsinkled.com
 Http://www.mingfatech.com



SimpoleD

SimpoleD-SHA-160150 for Sharp Modular Passive LED Cooler Φ 160mm

The thermal data table

	 <p><i>SimpoleD160150</i></p>
Model No.	SimpoleD-SHA-160150
Size	Φ160xH150mm
Material	AL6063-T5
Finish	Black Anodized
Weight(gr)	3155.0
Thermal Wattage	120W
HeatsinkOs-a²	506323
Heat Sink T_{Rise Above Ambient}	0.42

Dissipated Power Pd(W)	Pd = Pe x (1- η L)	Heat sink to ambient thermal resistance Rhs-amb ($^{\circ}$ C/W)	Heat sink to ambient temperature rise Ths-amb ($^{\circ}$ C)
		SimpoleD-SHA-160150	SimpoleD-SHA-160150
25.0		0.56	14.0
45.0		0.53	24.0
60.0		0.50	30.0
75.0		0.47	35.0
90.0		0.44	40.0
100.0		0.43	43.0
120.0		0.42	50.0

