



for

LED

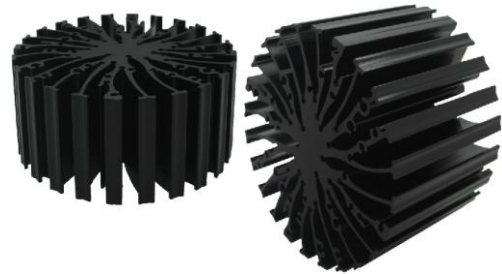


EtraLED

EtraLED-SHA-9680 Sharp Modular Passive Star LED Heat Sink Φ 96mm

Features VS Benefits

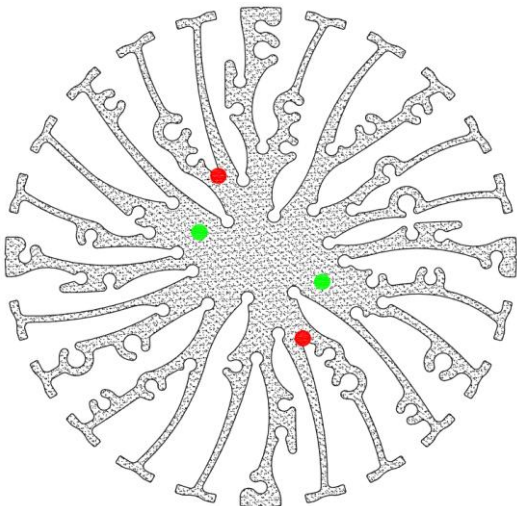
- * The EtraLED-SHA-9680 SHARP Modular Passive LED Coolers are specifically designed for luminaires using the SHARP LED engines.
- * Mechanical compatibility with direct mounting of the LED engines to the LED cooler and thermal performance matching the lumen packages.
- * For spotlight and downlight designs from 1200 to 6000 lumen.
- * Thermal resistance range Rth 0.92°C/W.
- * Modular design with mounting holes foreseen for direct mounting of SHARP Tiger Zenigata and Mega Zenigata LED engines.
- * Diameter 96mm - standard height 80mm Other heights on request.
- * Extruded from highly conductive aluminum.



Zhaga LED engine and radiator assembly is a unified future international standardization

- * Below you find an overview of SHARP engines COB's and LED modular which standard fit on the EtraLED coolers.
- * In this way mechanical after work and related costs can be avoided, and lighting designers can standardize their designs on a limited number of LED coolers.

SHARP



Sharp LED Modules Mounting indicator marks overview

Mega Zenigata modules name:

- | | |
|--------------|--------------|
| GW6TGCBG40C; | GW6DMA27XFC; |
| GW6DGA27XFC; | GW6DMA30XFC; |
| GW6DGA30XFC; | GW6DMA35XFC; |
| GW6DGA40XFC; | GW6DMA40XFC; |
| GW6DGA50XFC; | GW6DMA50XFC; |
| GW6DGC27XFC; | GW6DMC27XFC; |
| GW6DGC30XFC; | GW6DMC30XFC; |
| GW6DGC40XFC; | GW6DMC40XFC; |
| GW6DGC50XFC; | GW6DMC50XFC; |
| GW6DGD27XFC; | GW6DMD27XFC; |
| GW6DGD30XFC; | GW6DMD30XFC; |
| GW6DGD40XFC; | GW6DMD40XFC; |
| GW6DGD50XFC; | GW6DMD50XFC; |
| GW6DGE27XFC; | GW6DME27XFC; |
| GW6DGE30XFC; | GW6DME30XFC; |
| GW6DGE40XFC; | GW6DME40XFC; |
| GW6DGE50XFC; | GW6DME50XFC; |

Zhaga Book3 Holders:
 BJB Spotlight connector:47.319.2011.50;
 TE Connectivity:2213130-2
 Direct mounting with machine screws M3x8mm;
 Red indicator marks





for

LED



EtraLED

EtraLED-SHA-9680 Sharp Modular Passive Star LED Heat Sink Φ 96mm

Mounting Options and Drawings & Dimensions

Example: EtraLED-SHA-9680-B-3

Example: EtraLED-SHA-96 **1** - **2** - **3**

- 1** Height (mm)
- 2** Anodising Color
B-Black
C-Clear
Z-Custom
- 3** Mounting Options - see graphics for details Combinations available
Ex.order code - 12
means option 1 and 2 combined

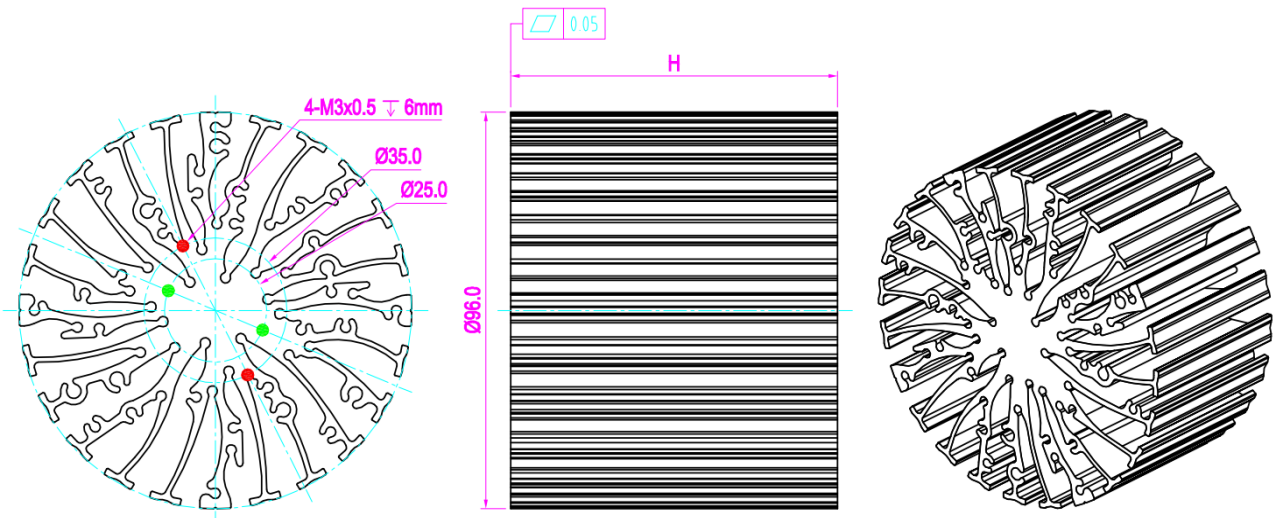
SHARP



Notes:

- Mentioned models are an extraction of full product range.
- For specific mechanical adaptations please contact MingfaTech.
- MingfaTech reserves the right to change products or specifications without prior notice.

MOUNTING OPTION	Module type	Holder NO.	THREAD	THREAD DEPTH	THREAD HOLE DISTANCE
2	Mini ZENIGATA	BJB:47.319.6180.50	M3	6mm	25.0mm/ @180° Zhaga Book11
1	Mega ZENIGATA Tiger Zenigataand	BJB:47.319.2011.50	M3	6mm	35.0mm/ @180° Zhaga Book3
		Type :2213130-2			



Tel:+86-769-39023131
E-fax:+86-(020)28819702 ext:22122
Email:sales@mingfatech.com
Http://www.heatsinkled.com
Http://www.mingfatech.com



The thermal data table

	 <i>EtraLED-9680</i>
Model No.	EtraLED-SHA-9680
Size	$\Phi 96 \times H 80\text{mm}$
Material	AL6063-T5
Finish	Black Anodized
Weight(gr)	575.0
Thermal Wattage	49.2W
Heatsink Θ_{s-a^2}	180427
Heat Sink T Rise Above Ambient	0.92

Dissipated Power Pd(W)	Pd = Pe x (1- η L)	Heat sink to ambient thermal resistance Rhs-amb ($^{\circ}\text{C}/\text{W}$)	Heat sink to ambient temperature rise Ths-amb ($^{\circ}\text{C}$)
		EtraLED-SHA-9680	EtraLED-SHA-9680
5		1.9	19
15		1.7	26
20		1.6	32
25		1.5	37
30		1.4	43
35		1.4	48
40		1.3	53
45		1.08	48.6
50		1.2	62

