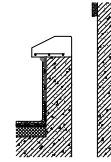
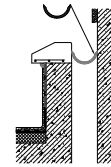


材料 Material	线毯 利明赫 刘云富	Nanjing Meishuo Building Materials Co.,Ltd.	
厚度 Thickness	刘云富	图集号 L05JT06	页号 48
颜色 Colour		楼地面变形缝（抗震型）（四）	
硬度 Hardness		Picture No.	58

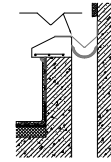
1. Clean the garbage and check if the gap is equally wide and straight.



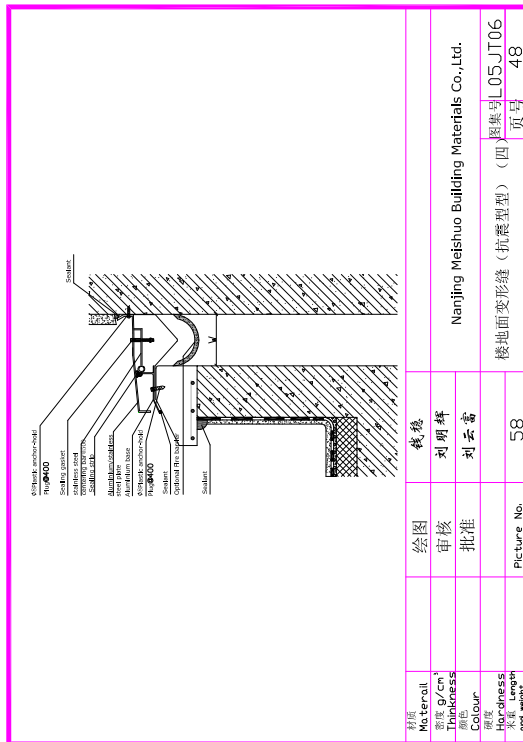
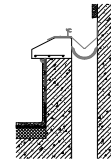
2. Install the fire barrier. After that make the chalk line on the screed-coat to confirm the location of the aluminum base.



3. Install the water barrier. The side line of water barrier can't cover the ink line snapped. (Brush the special glue on the surface of the screed coat and the lower surface of the water barrier. After the glue is almost air drying, put the water barrier on the screed coat.)

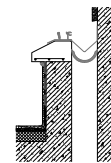


4. Install the aluminum base.

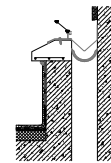


材料 Material	线毯 利明赫 刘云富	Nanjing Meishuo Building Materials Co.,Ltd.	
厚度 Thickness	刘云富	图集号 L05JT06	页号 48
颜色 Colour		楼地面变形缝（抗震型）（四）	
硬度 Hardness		Picture No.	58

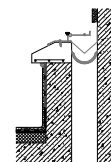
5. Nail the scree to make sure the base is on a straight line. Or when the centering bar bolt is screwed down, the aluminum plate must be mismatched.



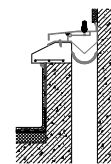
6. Install the seal gasket.



7. Install the centering bar and lean it as 45° with the aluminum base. Try to place the cover plate on the aluminum base, according to the screw hole of the aluminum plate. Sign on the decorative level, take the plate down and place down the centering bar as the sign.



8. Install the cover plate through the screw hole on the plate from one side to another.



9. Tighten the screw arbor on the plate. Installation finish.

