



for

LED

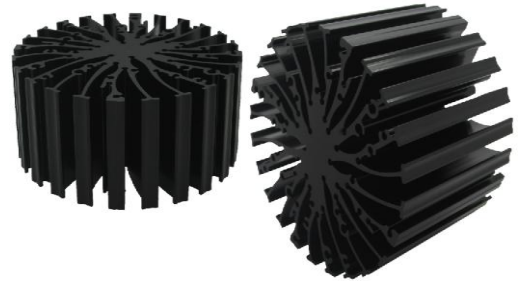


EtraLED

EtraLED-SHA-9650 Sharp Modular Passive Star LED Heat Sink Φ 96mm

Features VS Benefits

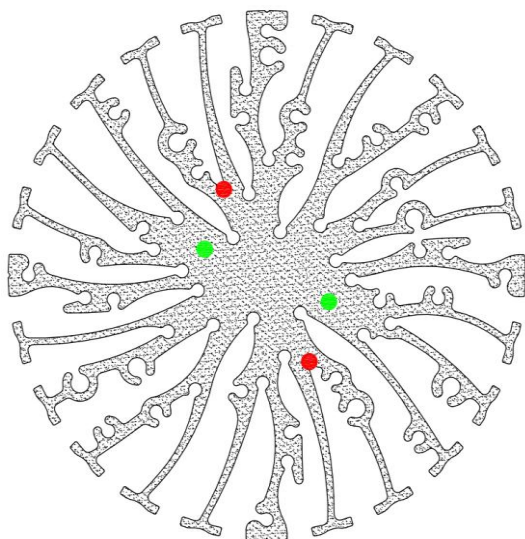
- * The EtraLED-SHA-9650 SHARP Modular Passive LED Coolers are specifically designed for luminaires using the SHARP LED engines.
- * Mechanical compatibility with direct mounting of the LED engines to the LED cooler and thermal performance matching the lumen packages.
- * For spotlight and downlight designs from 1200 to 4500 lumen.
- * Thermal resistance range R_{th} 1.2°C/W.
- * Modular design with mounting holes foreseen for direct mounting of SHARP Tiger Zenigata and Mega Zenigata LED engines.
- * Diameter 96mm - standard height 50mm Other heights on request.
- * Extruded from highly conductive aluminum.



Zhaga LED engine and radiator assembly is a unified future international standardization

- * Below you find an overview of SHARP engines COB's and LED modular which standard fit on the EtraLED coolers.
- * In this way mechanical after work and related costs can be avoided, and lighting designers can standardize their designs on a limited number of LED coolers.

SHARP



Sharp LED Modules Mounting indicator marks overview

Mega Zenigata modules name:

GW6TGCBG40C;	GW6DMA27XFC;
GW6DGA27XFC;	GW6DMA30XFC;
GW6DGA30XFC;	GW6DMA35XFC;
GW6DGA40XFC;	GW6DMA40XFC;
GW6DGA50XFC;	GW6DMA50XFC;
GW6DGC27XFC;	GW6DMC27XFC;
GW6DGC30XFC;	GW6DMC30XFC;
GW6DGC40XFC;	GW6DMC40XFC;
GW6DGC50XFC;	GW6DMC50XFC;
GW6DGD27XFC;	GW6DMD27XFC;
GW6DGD30XFC;	GW6DMD30XFC;
GW6DGD40XFC;	GW6DMD40XFC;
GW6DGD50XFC;	GW6DMD50XFC;
GW6DGE27XFC;	GW6DME27XFC;
GW6DGE30XFC;	GW6DME30XFC;
GW6DGE40XFC;	GW6DME40XFC;
GW6DGE50XFC;	GW6DME50XFC;

Zhaga Book3 Holders:

BJB Spotlight connector:47.319.2011.50;

TE Connectivity:2213130-2

Direct mounting with machine screws M3x6mm;

Red indicator marks

Tel:+86-769-39023131

E-fax:+86-(020)28819702 ext:22122

Email:sales@mingfatech.com

Http://www.heatsinkled.com

Http://www.mingfatech.com





LED



EtraLED

EtraLED-SHA-9650 Sharp Modular Passive Star LED Heat Sink Φ96mm

Mounting Options and Drawings & Dimensions

Example: EtraLED-SHA-9650-B-3

Example: EtraLED-SHA-96 **1** - **2** - **3**

- 1** Height (mm)
- 2** Anodising Color
B-Black
C-Clear
Z-Custom
- 3** Mounting Options - see graphics for details Combinations available
Ex.order code - 12
means option 1 and 2 combined

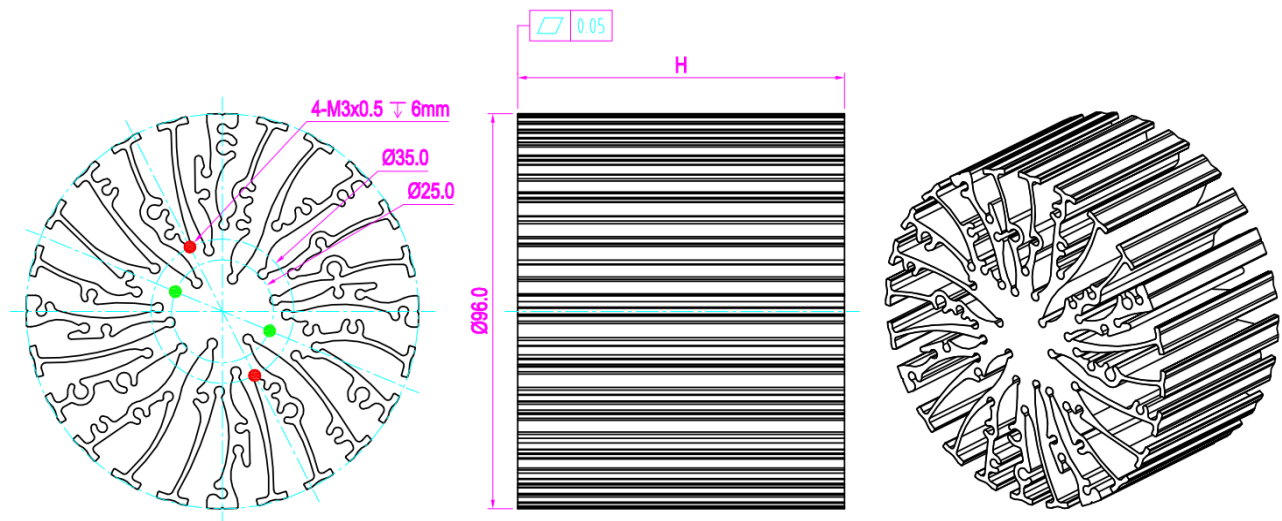
Notes:

- Mentioned models are an extraction of full product range.
- For specific mechanical adaptations please contact MingfaTech.
- MingfaTech reserves the right to change products or specifications without prior notice.

SHARP



MOUNTING OPTION	Module type	Holder NO.	THREAD	THREAD DEPTH	THREAD HOLE DISTANCE
2	Mini ZENIGATA	BJB:47.319.6180.50	M3	6mm	25.0mm/ @180° Zhaga Book11
1	Mega ZENIGATA Tiger Zenigataand	BJB:47.319.2011.50	M3	6mm	35.0mm/ @180° Zhaga Book3
		Type :2213130-2			



Tel:+86-769-39023131
 E-fax:+86-(020)28819702 ext:22122
 Email:sales@mingfatech.com
 Http://www.heatsinkled.com
 Http://www.mingfatech.com



EtraLED

EtraLED-SHA-9650 Sharp Modular Passive Star LED Heat Sink Φ96mm

The thermal data table

	 <i>EtraLED-9650</i>
Model No.	EtraLED-SHA-9650
Size	Φ96xH50mm
Material	AL6063-T5
Finish	Black Anodized
Weight(gr)	386.0
Thermal Wattage	37.5W
HeatsinkOs-a²	114836
Heat Sink T Rise Above Ambient	1.20

	Pd = Pe x (1-ηL)	Heat sink to ambient thermal resistance Rhs-amb (°C/W)	Heat sink to ambient temperature rise Ths-amb (°C)
		EtraLED-SHA-9650	EtraLED-SHA-9650
Dissipated Power Pd(W)	5	1.9	19
	15	1.7	26
	20	1.6	32
	25	1.5	37
	30	1.4	43
	35	1.4	48
	40	1.3	53
	50	1.2	62

