



for

LED

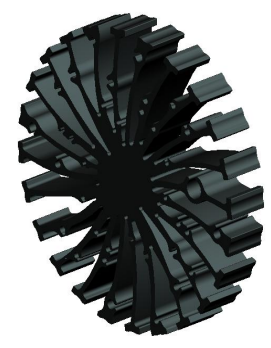


EtraLED

EtraLED-13020 Modular Passive LED Star Heat Sink Φ130mm

Features VS Benefits

- * Mechanical compatibility with direct mounting of the LED modules to the LED cooler and thermal performance matching the lumen packages.
 - * Thermal resistance range Rth 1.1°C/W.
 - * Modular design with mounting holes foreseen for direct mounting of a wide range of LED modules and COB's:
 - * Diameter 130mm - Standard height 20mm , Other heights on request.
 - * Extruded from highly conductive aluminum.
- 2 standard colors - clear anodised - black anodised
Zhaga Book 3 Spot Light Modules Xicato ; Osram , Bridgelux ,Citizen ,Cree ,Seoul ,Edison
Lumileds ,Vossloh-Schwabe , Lustrous , Luminus , Prolight ,SHARP ,Philips



- 1) Xicato XSM, XIM,XTM;
- 2) Bridgelux ESS, ESR, Vero 10, Vero 13, Vero 18,Vero 29V-series;
- 3) Citizen CLL032-CLU034;CLL042-CLU044,CLL052-CLU054;
- 4) Cree Xlamp CXA15xx;CXA18xx,CXA25xx,CXA35xx;
- 5) Lumileds Luxeon COB Series,Luxeon K arrays Series;
- 6) Osram Soleriq S13, S19, E30
- 7) Seoul Semiconductor ZC18, ZC25, ZC60;
- 8) Edison EdiLex SLM and EdiLex II COB LED engines;
- 9) Lustrous Lustrous 6 Series;
- 10) Luminus CXM-22;CHM-22 COB LED engines;
- 11) Prolight Opto PABS, PABA, PACB, PANA
- 12) Vossloh-Schwabe LUGA C LED engines;
- 13) SHARP Mega Zenigata LED engines;
- 14) Philips Fortimo SLM, DLM LED engines.



Order Information

Example:EtraLED-13050-B-#
Example:EtraLED-130-1-2-3

- 1** Hight (mm)
- 2** Anodising Color
B-Black
C-Clear
Z-Custom
- 3** Mounting Options - see graphics for details Combinations available
Ex.order code - 12
means option 1 and 2 combined

MingFa recommends the use of a high Thermal conductive interface between the LED Module and the LED cooler. Either thermal grease, A thermal pad or a phase change thermal pad Thickness 0.1-0.15mm is recommended.

Tel: +86-769-39023131
E-fax: +86-(020)28819702 ext22122
Http://www.heatsinkled.com
Http://www.mingfatech.com



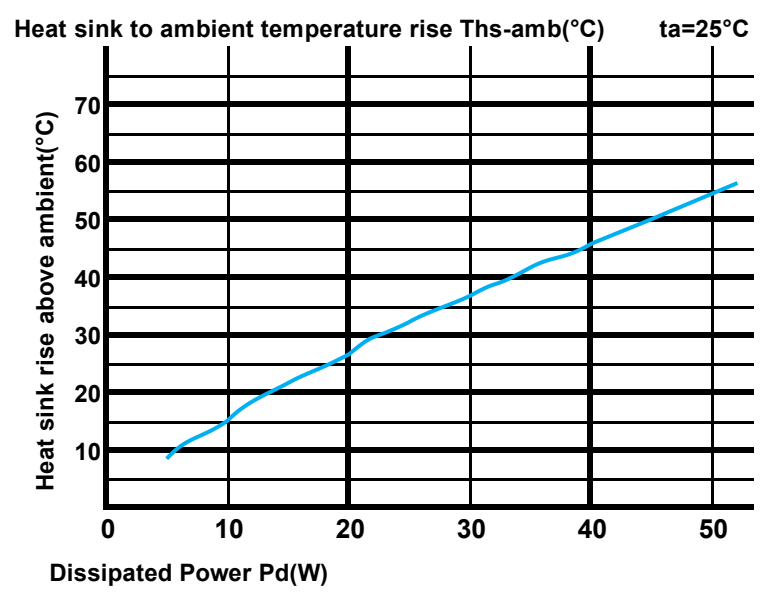
EtraLED

EtraLED-13020 Modular Passive LED Star Heat Sink Φ130mm

The thermal data table

	<p><i>EtraLED-13020</i></p>
Model No.	EtraLED-13020
Size	Φ130xH20mm
Material	AL6063-T5
Finish	Black Anodized
Weight(g)	274
Thermal Wattage	42.0W
HeatsinkOs-a²	68964
Heat Sink Rise T_{Rise Above Ambient} (°C/W)	1.1

Dissipated Power Pd(W)	Pd = Pe x (1-ηL)	Heat sink to ambient thermal resistance Rhs-amb (°C/W)	Heat sink to ambient temperature rise Ths-amb (°C)
		EtraLED-13020	EtraLED-13020
10		1.9	15
20		1.7	26
30		1.6	37
40		1.5	45
50		1.4	54



- Notes:
- Mentioned models are an extraction of full product range.
 - For specific mechanical adaptations please contact MingfaTech.
 - MingfaTech reserves the right to change products or specifications without prior notice.