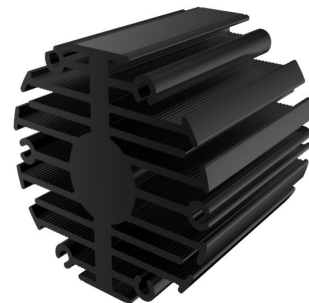


eLED

eLED-4640 Modular Passive LED Star Heat Sink Φ 46mm

Features VS Benefits

- * Mechanical compatibility with direct mounting of the LED modules to the LED cooler and thermal performance matching the lumen packages.
 - * Thermal resistance range Rth 5.2°C/W.
 - * Modular design with mounting holes foreseen for direct mounting of a wide range of LED modules and COB's.
 - * Diameter 46.5mm - Standard height 40mm , Other heights on request.
 - * Extruded from highly conductive aluminum.
- 2 standard colors - clear anodised - black anodised.
- Zhaga Book 3 Spot Light Modules Edison , Osram , Xicato ,Bridgelux ,Citizen ,Cree , Lumileds , Tridonic , Vossloh , Seoul ,LG , Lustrous ,Prolight ,Vossloh ,Samung ,Sharp ,Philips.



- 1) Xicato XSM, XIM,XTM.
- 2) Bridgelux ES Rectangle Array Series Vero 13 and Vero18 COB engines.
- 3) Citizen CLL022-CLU024, CLL032-CLU034.
- 4) Cree XLamp CXA13xx, CXA15xx,CSA18xx.
- 5) Lumileds Luxeon COB's 1203, 1204, 1205, Luxeon K arrays K12, K16.
- 6) Osram Soleriq S13, S19, E30.
- 7) Seoul Semiconductor ZC6, ZC12, ZC18,ZC25.
- 8) Tridonic TALEXXmodule SLE nodules engines.
- 9) LG Innotek LEMWM18 10W, 13W, 17W.
- 10) Edison EdiLex SLM and EdiLex II COB LED engines.
- 11) Lustrous LUSTRON 6 series LL604F, LL608D, LL613F, LL620F.
- 12) Prolight Opto PABS, PABA, PACB, PANA.
- 13) Samung LC013,LC019,LC026 COB LED engines.
- 14) SHARP Mini Zenigata,Tiger Zenigataand and Mega Zenigata LED engines.
- 15) Philips Fortimo SLM LED engines.
- 16) Vossloh-Schwabe LUGA Shop LED engines.
- 17) Luminus C##9,C##14 LED engines.



Order Information

Example:eLED-4640-B-#

Example:eLED-46 **1** - **2** - **3**

- 1** Hight (mm)
- 2** Anodising Color
B-Black
C-Clear
Z-Custom

- 3** Mounting Options - see graphics for details Combinations available
Ex.order code - 12
means option 1 and 2 combined

MingFa recommends the use of a high Thermal conductive interface between the LED Module and the LED cooler. Either thermal grease, A thermal pad or a phase change thermal pad Thickness 0.1-0.15mm is recommended.

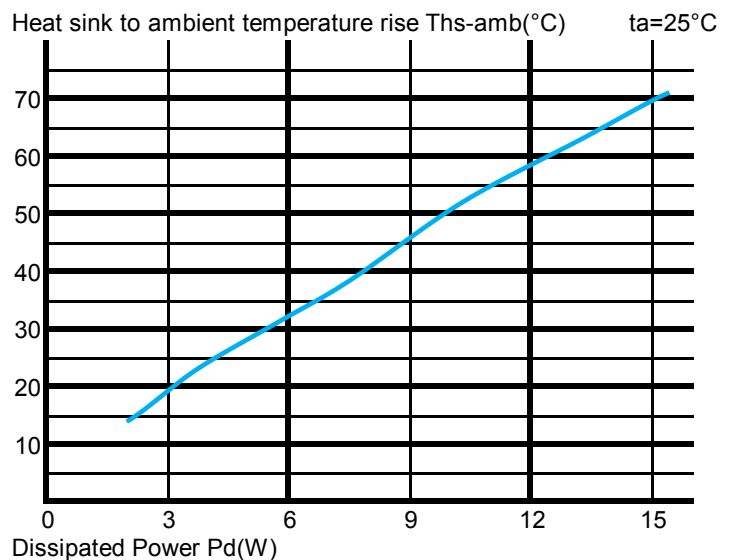
eLED

eLED-4640 Modular Passive LED Star Heat Sink Φ 46mm

The thermal data table

| | |
|--|--|
| |  <i>eLED-4640</i> |
| Model No. | eLED-4640 |
| Size | Φ46.5xH40mm |
| Material | AL6063-T5 |
| Finish | Black Anodized |
| Weight(g) | 81.0 |
| Thermal Wattage | 9.7 W |
| HeatsinkOs-a² | 33323 |
| Heat Sink T_{Rise Above Ambient} (°C/W) | 5.20 |

| Dissipated Power Pd(W) | Pd = Pe x (1-ηL) | Heat sink to ambient thermal resistance Rhs-amb (°C/W) | Heat sink to ambient temperature rise T _{hs-amb} (°C) |
|------------------------|---------------------|--|--|
| | | eLED-4640 | |
| 3 | | 6.3 | 19 |
| 6 | | 5.3 | 32 |
| 9 | | 5.1 | 46 |
| 12 | | 4.8 | 58 |
| 15 | | 4.7 | 70 |



Notes:

- Mentioned models are an extraction of full product range.
- For specific mechanical adaptations please contact MingfaTech.
- MingfaTech reserves the right to change products or specifications without prior notice.