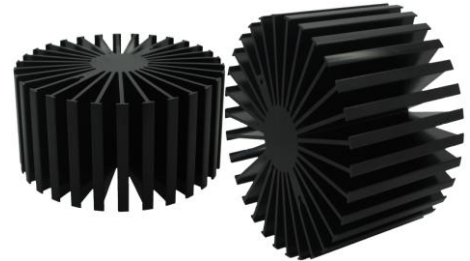


SimpoleD

SimpoleD-SEO-11780 for Seoul Modular Passive LED Cooler Φ117mm

Features VS Benefits

- * The SimpoleD-SEO-11780 Seoul Modular Passive LED Coolers are specifically designed for luminaires using the Seoul LED engines.
- * Mechanical compatibility with direct mounting of the LED engines to the LED cooler and thermal performance matching the lumen packages.
- * For spotlight and downlight designs from 2400 to 7800 lumen.
- * Thermal resistance range Rth 0.8°C/W.
- * Modular design with mounting holes foreseen for direct mounting of Seoul ZC4 Series,ZC6 Series,ZC12 Series,ZC18 Series,ZC25 Series, ZC40 Series and ZC60 Series COB engines.
- * Diameter 117mm - standard height 80mm Other heights on request.
- * Extruded from highly conductive aluminum.

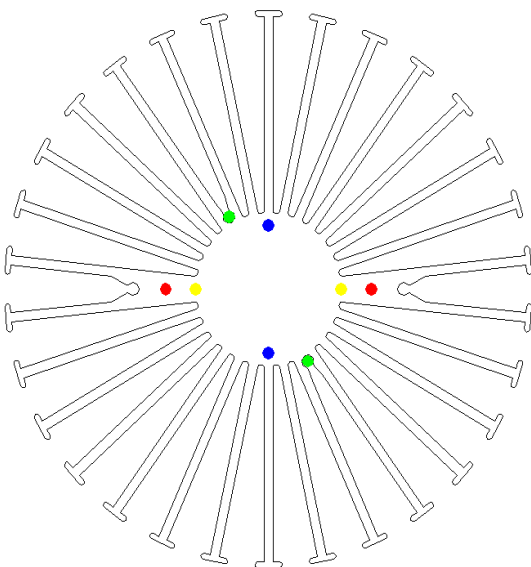


Seoul LED engine and radiator assembly directly Mounting Options

- * Below you find an overview of Seoul COB's and LED modules which standard fit on the SimpoLED coolers.
- * In this way mechanical after work and related costs can be avoided, and lighting designers can standardize their designs on a limited number of LED coolers.



SEOUL SEMICONDUCTOR



Seoul COB engines Mounting Options

ZC 12 Series COB Modules:

SDW02F1C; SDW82F1C; SDW92F1C;

ZC 18 Series COB Modules:

SDW03F1C; SDW83F1C; SDW93F1C;

Zhaga Book3 Holes ,
BJB Semiconductor Spotlight connector 47.319.2021.50

TE Connectivity Lumawise type Z502213254-1
TE Connectivity Lumawise type Z502213254-2

Green indicator marks;
Mounting with 2 screws M3x8mm.

Blue indicator marks;
Direct mounting with 2 screws M3x6mm.

ZC 25 Series LED Modules name:

SDW04F1C;
SDW84F1C;
SDW94F1C;

ZC 40 Series LED Modules name:

SDW05F1C;
SDW85F1C;
SDW95F1C;

ZC 60 Series LED Modules name:

SDW06F1C;
SDW86F1C;

Green indicator marks:
Zhaga Book3 BJB Holder:47.319.2030.50
Mounting with machine screws M3x8mm ;
Yellow indicator marks ;
Direct mounting with 2 screws M3x6mm.

ZC 100 Series LED Modules name:

SDW07F1C; SDW87F1C;

Red indicator marks ;
Direct mounting machine screws M3x6mm ;



SimpoleD

SimpoleD-SEO-11780 for Seoul Modular Passive LED Cooler $\Phi 117\text{mm}$

Mounting Options and Drawings & Dimensions

Example: SimpoleD-SEO-11780-B-3

Example: SimpoleD-SEO-117 **1** - **2** - **3**

1 Height (mm)

2 Anodising Color

B-Black

C-Clear

Z-Custom

3 Mounting Options - see graphics for details Combinations available

Ex.order code - 12

means option 1 and 2 combined

Notes:

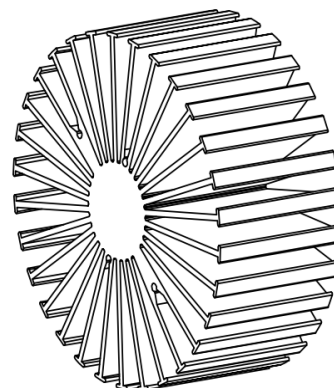
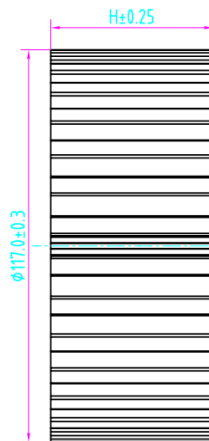
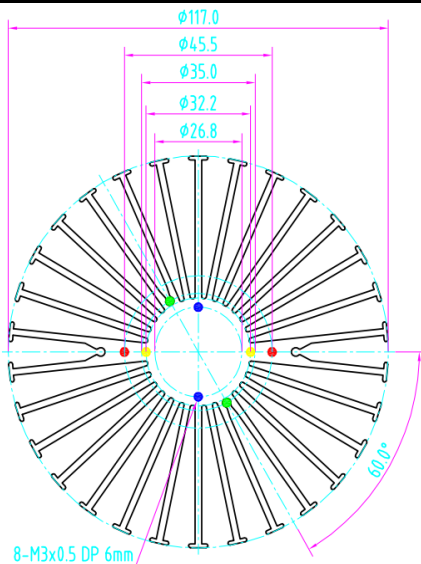
- Mentioned models are an extraction of full product range.
- For specific mechanical adaptations please contact MingfaTech.
- MingfaTech reserves the right to change products or specifications without prior notice.



SEOUL SEMICONDUCTOR



MOUNTING OPTION	Module type	Holder NO.	THREAD	THREAD DEPTH	THREAD HOLE DISTANCE
1	ZC12 Series ZC18 Series	/	M3	6mm	26.8mm/ 2-@180°
2	ZC25 Series ZC40 Series ZC60 Series	/	M3	6mm	32.2mm/ 2-@180°
3	ZC12 Series ZC18 Series	BJB:47.319.2040.50	M3	6mm	35mm/ 2-@180° Zhaga Book3
	ZC25 Series ZC40 Series ZC60 Series	BJB: 47.319.2030.50	M3	6mm	
4	ZC100 Series	/	M3	6mm	45.5mm/ 2-@180°



SimpoleD

SimpoleD-SEO-11780 for Seoul Modular Passive LED Cooler Φ 117mm

The thermal data table

	 <i>SimpoleD-11780</i>
Model No.	SimpoleD-SEO-11780
Size	Φ117xH80mm
Material	AL6063-T5
Finish	Black Anodized
Weight(g)	774.0
Thermal Wattage	60.7W
HeatsinkΘs-a²	231490
Heat Sink T Rise Above Ambient	0.8

Dissipated Power Pd(W)	Pd = Pe x (1- η L)	Heat sink to ambient thermal resistance Rhs-amb ($^{\circ}$ C/W)	Heat sink to ambient temperature rise Ths-amb ($^{\circ}$ C)
		SimpoleD-SEO-11780	SimpoleD-SEO-11780
15		1.01	15.2
30		0.88	26.4
45		0.85	38.3
60		0.82	49.2
75		0.75	56.3
90		0.68	61.2

