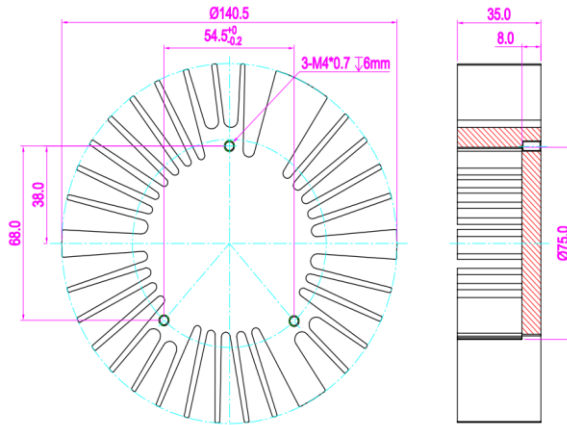
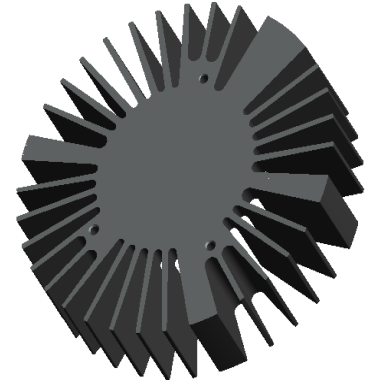


## SimpoleD

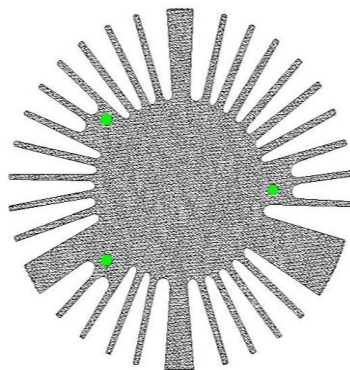
### SimpoleD-TRI-140 for Tridonic Modular Passive LED Cooler $\Phi 140.5\text{mm}$

#### Features VS Benefits

- \* The Cool-LED Simpo for Tridonic Stark DLE LED Modular Passive LED Coolers are specifically designed for luminaires using the Stark DLED engines.
- \* Mechanical compatibility with direct mounting of the LED engines to the LED cooler and thermal performance matching the lumen packages.
- \* For spotlight and downlight designs from 1100 to 3000 lumen.
- \* Thermal resistance range  $R_{th}$   $1.1^{\circ}\text{C}/\text{W}$ .
- \* Modular design with mounting holes foreseen for direct mounting of Tridonic Stark DLE LED Modular.
- \* Diameter 140.5mm - standard height 35mm Other heights on request.
- \* Extruded from highly conductive aluminum.



- \* Below you find an overview of Tridonic Stark DLE LED modules which standard fit on the coolers.
- \* In this way mechanical after work and related costs can be avoided, and lighting designers can standardize their designs on a limited number of LED coolers.



#### Tridonic Stark DLE LED Modules standard Mounting

##### Tridonic Stark DLE LED engines

- STARK-DLE-PURE-G2-LES65-2000-830-CLA;
- STARK-DLE-PURE-G2-LES65-2000-840-CLA;
- STARK-DLE-PURE-G2-LES65-3000-830-CLA;
- STARK-DLE-PURE-G2-LES65-3000-840-CLA;
- STARK-DLE-G2-LES65-2000-830-CLA;
- STARK-DLE-G2-LES65-2000-840-CLA;
- STARK-DLE-G2-LES65-3000-830-CLA;
- STARK-DLE-G2-LES65-3000-840-CLA;

Direct mounting with machine screws M4x10mm;  
Green indicator marks.



for

LED



*SimpoleD*

*SimpoleD-TRI-140 for Tridonic Modular Passive LED Cooler Φ140.5mm*

**Mounting Options and Drawings & Dimensions**

Example: SimpoleD-TRI-14035-B-3

Example: SimpoleD-TRI-140 **1** - **2** - **3**

**1** Height (mm)

**2** Anodising Color

B-Black

C-Clear

Z-Custom

**3** Mounting options;

On request;

Mounting holes, cable holes;

Screw thread, thermal interface



MOUNTING OPTION	THREAD	THREAD DEPTH	THREAD HOLE DISTANCE
N	None	None	None
1	M4	6mm	Tridonic Stark DLE LED Modules standard hold
2			

Notes:

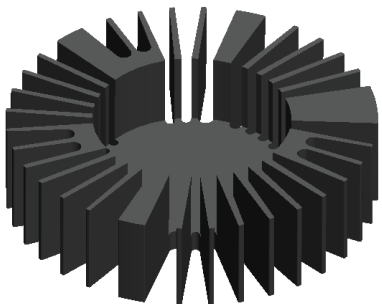
- Mentioned models are an extraction of full product range.
- For specific mechanical adaptations please contact MingfaTech.
- MingfaTech reserves the right to change products or specifications without prior notice.



*SimpoleD*

SimpoleD-TRI-140 for Tridonic Modular Passive LED Cooler  $\Phi 140.5\text{mm}$

The thermal data table

	 <p><i>SimpoleD-14035</i></p>
Model No.	SimpoleD-TRI-14035
Size	$\Phi 140.5 \times H35\text{mm}$
Material	6063-T5
Finish	Black Anodized
Weight(gr)	467
Thermal Wattage	36.2W
Heatsink $\Theta_{s-a}^2$	94070
Heat Sink T Rise Above Ambient	1.1

Heat sink to ambient temperature rise  $T_{hs-amb}(^{\circ}\text{C})$   $t_a=25^{\circ}\text{C}$

