



for

LED

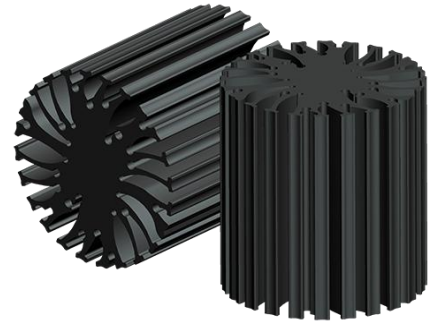


EtraLED

EtraLED-4850 Modular Passive LED Star Heat Sink  $\Phi$ 48mm

Features VS Benefits

- \* Mechanical compatibility with direct mounting of the LED modules to the LED cooler and thermal performance matching the lumen packages.
- \* Thermal resistance range Rth 4.2°C/W.
- \* Modular design with mounting holes foreseen for direct mounting of a wide range of LED modules and COB's:
- \* Diameter 48mm - Standard height 50mm , Other heights on request.
- \* Extruded from highly conductive aluminum.



Zhaga Book 3 Spot Light Modules Edison, Osram ,Xicato, Bridgelux, Citize, Cree , Tridonic ,LumiLEDS, Seoul , Lustrous, Prolight , Luminus ,LG ,Samung ,SHARP .Philips

- 1) Xicato XSM, XIM,XTM;
- 2) Bridgelux ESS, ESR, Vero 10, Vero 13, V-series;
- 3) Citizen CLL022-CLU024, CLL032-CLU034;
- 4) Cree XLamp CXA13xx, CXA15xx;
- 5) Lumileds Luxeon COB's 1203, 1204, 1205,Luxeon K arrays K12, K16;
- 6) Osram Soleriq S13, S19, E30
- 7) Seoul Semiconductor ZC6, ZC12;
- 8) Tridonic TALEXXmodule SLE modules.
- 9) LG Innotek LEMWM18 10W, 13W;
- 10) Edison EdiLex SLM and EdiLex II COB LED engines.
- 11) Lustrous Lustrous Series,Lustrous M Series,Lustrous V5 Series
- 12) Prolight Opto PABS, PABA, PACB, PANA
- 13) Luminus CLM-9,CXM-9,CHM-9 COB engines.
- 14) Vossloh-Schwabe LUGA Shop and LUGA C LED engines.
- 15) Samung LC013 COB LED engines.
- 16) SHARP Mini Zenigata LED engines.
- 17) Philips Fortimo SLM LED engines.



Order Information

Example:EtraLED-4850-B-#

Example:EtraLED-48-1-2-3

- 1 Hight (mm)
- 2 Anodising Color
  - B-Black
  - C-Clear
  - Z-Custom
- 3 Mounting Options - see graphics for details Combinations available
  - Ex.order code - 12
  - means option 1 and 2 combined

MingFa recommends the use of a high Thermal conductive interface between the LED Module and the LED cooler. Either thermal grease, A thermal pad or a phase change thermal pad Thickness 0.1-0.15mm is recommended.

Tel: +86-769-39023131
E-fax: +86-(020)28819702 ext22122
Http://www.heatsinkled.com
Http://www.mingfatech.com



*EtraLED*

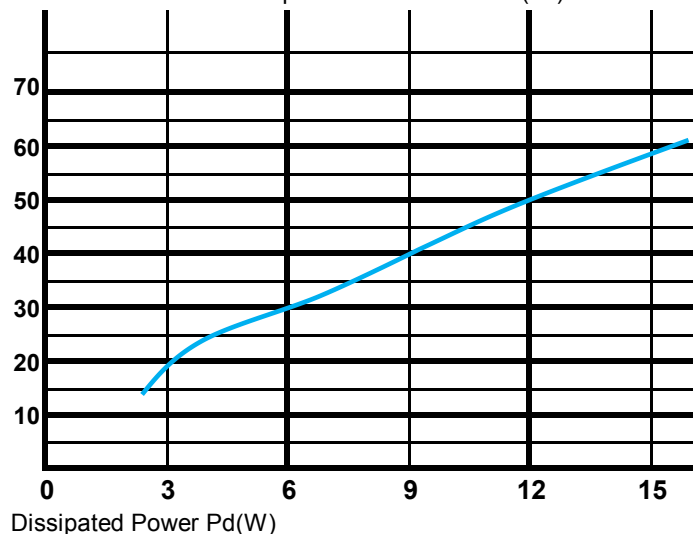
*EtraLED-4850 Modular Passive LED Star Heat Sink Φ48mm*

The thermal data table

<i>EtraLED-4850</i>	
<b>Model No.</b>	<b>EtraLED-4850</b>
<b>Size</b>	<b>Φ48xH50mm</b>
<b>Material</b>	<b>AL6030-T5</b>
<b>Finish</b>	<b>Black Anodized</b>
<b>Weight(g)</b>	<b>134</b>
<b>Thermal Wattage</b>	<b>12.0W</b>
<b>HeatsinkOs-a<sup>2</sup></b>	<b>36868</b>
<b>Heat Sink RiseT<sub>Rise Above Ambient</sub> (°C/W)</b>	<b>4.2</b>

Dissipated Power Pd(W)	Pd = Pe x (1-ηL)	Heat sink to ambient thermal resistance Rhs-amb (°C/W)	Heat sink to ambient temperature rise Ths-amb (°C)
		EtraLED-4850	EtraLED-4850
2.5		5.6	14.0
4.5		5.3	24.0
7.0		4.6	32.0
9.5		4.3	41.0
12.0		4.1	49.0
18.0		3.7	65.0

Heat sink to ambient temperature rise Ths-amb(°C) ta=25°C



Notes:

- Mentioned models are an extraction of full product range.
- For specific mechanical adaptations please contact MingfaTech.
- MingfaTech reserves the right to change products or specifications without prior notice.