



for

LED

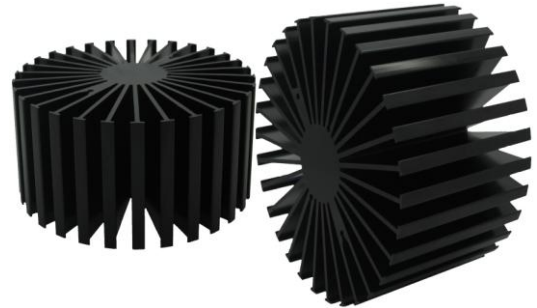


SimpOLED

SimpOLED-11780 Modular Passive LED Cooler Φ 117mm

Features VS Benefits

- * Mechanical compatibility with direct mounting of the LED modules to the LED cooler and thermal performance matching the lumen packages.
 - * Thermal resistance range Rth 0.82°C/W.
 - * Modular design with mounting holes foreseen for direct mounting of a wide range of LED modules and COB's:
 - * Diameter 117mm - Standard height 80mm , Other heights on
 - * Extruded from highly conductive aluminum.
 - * 2 standard colors - clear anodised - black anodised
- Zhaga Book 3 Spot Light Modules: Bridgelux , Citizen, Cree, Tridonic,Luminus Lumileds,Osram,Lustrous,LG Innotek,Seoul,SHARP,SamSung



- 1) Bridelux ESS, V8 and V6, V-series;
- 2) Citizen CLL022-CLU024, CLL032-CLU034;
- 3) Cree XLamp CXA13xx, CXA15xx,CXA25xx;
- 4) Lumileds Luxeon COB's 1203, 1204, 1205, Luxeon K arrays K12,
- 5) Osram Soleriq S13, S19, E30;
- 6) Seoul Semiconductor ZC12, ZC18ZC25;
- 4) Tridonic Talexx Stark SLE GEN3 Mini LES-10/LES-17, Gen4-15
- 8) LG Innotek LEMWM18 10W, 13W, 17W
- 9) Edison EdiPower II Star/HM/CAC series;
- 10) Lustrous LUSTRON 6 series LL604F, LL608D, LL613F, LL620F
- 11) Prolight Opto PABS, PABA, PACB, PANA
- 12) SHARP Mini Zenigata ,Tiger Zenigataand and Mega Zenigata LED
- 13) SamSung LC019,LC026 B LED engines.
- 14) Luminus C##-9,c##14 LED engines.
- 15) Vossloh-Schwabe LUGA Shop LED engines.



Order Information

Example:EtraLED-11780-B-#

Example:EtraLED-117 **1** - **2** - **3**

1 Hight (mm)

2 Anodising Color

B-Black

C-Clear

Z-Custom

3 Mounting Options - see graphics for details Combinations available

Ex.order code - 12

means option 1 and 2 combined

MingFa recommends the use of a high Thermal conductive interface between the LED

Module and the LED cooler. Either thermal grease,A thermal pad or a phase change thermal pad

A thermal pad or a phase change thermal pad.Thickness 0.1-0.15mm is recommended.

Tel: +86-769-39023131

E-fax: +86-(020)28819702 ext:22122

Email:sales@mingfatech.com

Http://www.heatsinkled.com

Http://www.mingfatech.com



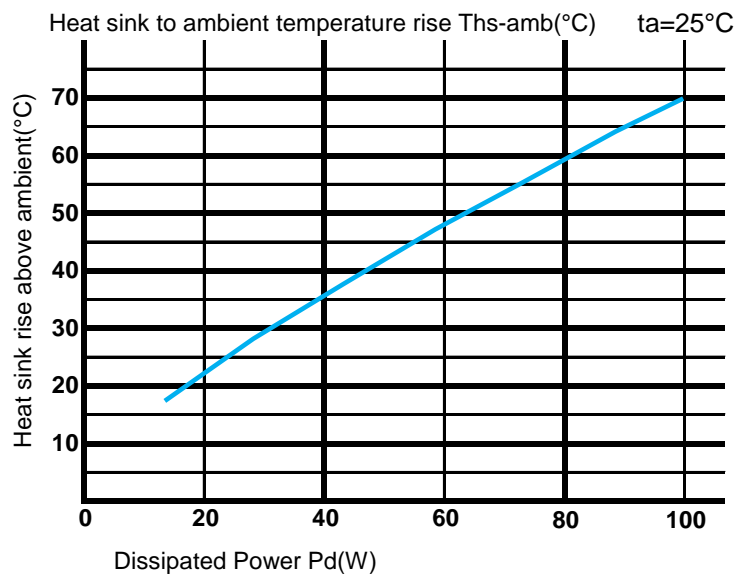
SimpLED

SimpLED-11780 Modular Passive LED Cooler Φ 117mm

The thermal data table

| | |
|---|--|
|  |  |
| | <i>SimpLED-11780</i> |
| Model No | SimpLED-11780 |
| Size | Φ117xH80mm |
| Material | 6063-T5 |
| Finish | Black Anodized |
| Weight(g) | 774 |
| Thermal Wattage | 60.7W |
| HeatsinkOs-a² | 231490 |
| Heat Sink T_R Rise Above Ambient (°C/W) | 0.82 |

| | Pd = Pe x (1- η L) | Heat sink to ambient thermal resistance Rhs-amb (°C/W) | Heat sink to ambient temperature rise |
|------------------------|----------------------------|--|---|
| | | SimpLED-11780 | SimpLED-11780 |
| Dissipated Power Pd(W) | 15 | 1.01 | 15.2 |
| | 30 | 0.88 | 26.4 |
| | 45 | 0.85 | 38.3 |
| | 60 | 0.82 | 49.2 |
| | 75 | 0.75 | 56.3 |
| | 90 | 0.68 | 61.2 |



Notes:

- Mentioned models are an extraction of full product range.
- For specific mechanical adaptations please contact MingfaTech.
- MingfaTech reserves the right to change products or specifications without prior notice.