

Catalogue

1. Introduction.....	1
1-1 Use & Construction.....	1
1-2 Model & Parameter.....	1
1-3 Electric principle illustration.....	1
1-4 Construction illustration.....	2
2. Assembly.....	3
2-1 Equipment assemble.....	3
2-2 Copper band assemble.....	3
2-3 Knife mold options.....	3/4
3. Maintenance.....	5
3-1 Maintenance.....	5
3-2 Notice.....	5
4. Problem & Remedy.....	5
5. Splicing quality check.....	5
6. Specification.....	6

1. Introduction

1-1 Use & Construction

This machine is new model for splicing. It's spliced by wrapping to instead of weld or rivet joint. It's stable and convenient. It applied to:

- 1) To joint conducting wire and neon light;
- 2) To joint resistance and LED;
- 3) To joint switch and conducting wire;
- 4) To joint the tapping of transformer;
- 5) To joint resistance and conducting wire;
- 6) To joint the constant temperature fuse;
- 7) To joint non-welding high temperature heating wire or NTC element.

It used assembly knife mold (see picture 4). There are many types and sizes for option. The knife mold is changeable to your requests.

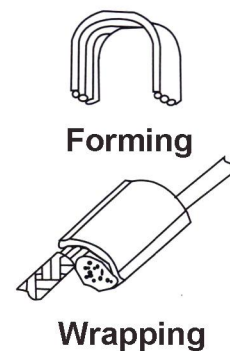
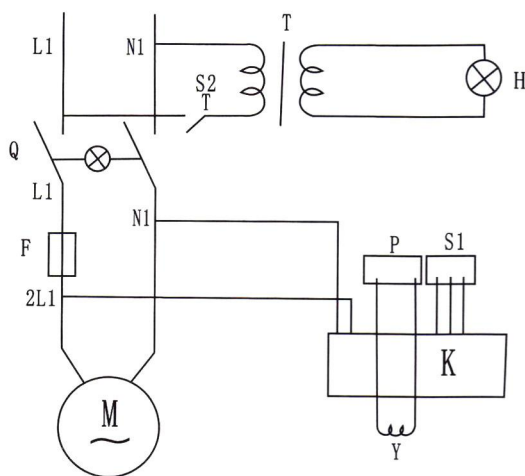
Its material continued automatically. From cutting, forming, joint by wrapping one-process work (see picture 1). No material wasting and easily adjust.

There are equipments, such as counter, safety device, single socket and footswitch. To compare with existed splicer, this machine can reduce the cost 30% up and improve the efficiency 40% up.

1-2 Model & Parameter

Model no.	Power	Watt	Nominal Pressure	Slide Distance	Material Width & Thickness
HAN-806	AC 220V/50Hz or AC 110V/60Hz	250 W	10 KN	23mm	W: 2, 4, 6mm T: 0.3~0.4mm

1-3 Electric principle illustration



Picture 1

Q : Power On / Off	T : Transformer	F : Fuse	H : Working light
S2: Light On / Off	S1: Footswitch	Y : Electromagnet	K : Circuit board
P : Counter	M : Single phase machinery		

2. Assembly (See picture no. 2)

2-1 Equipment assemble

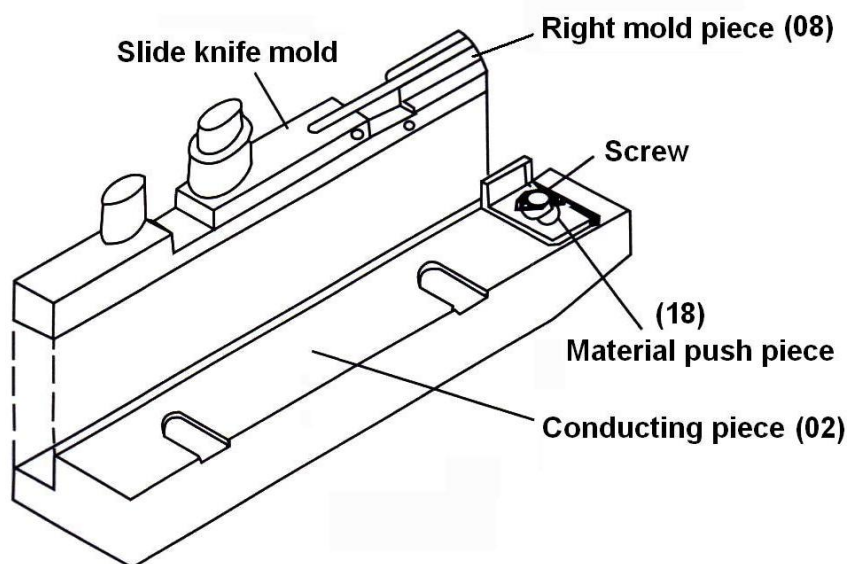
1. Please connect power cord and footswitch tightly.
2. Please connect ground wire also.

2-2 Copper band assemble

1. According to picture 2, and install the parts in sequence (S5→23→24→22)
2. According to picture 2, and install the part (110)
3. Please pull out the copper band through (110), rise up (17), the copper band insert through (16) (26) and then into (21) (83).

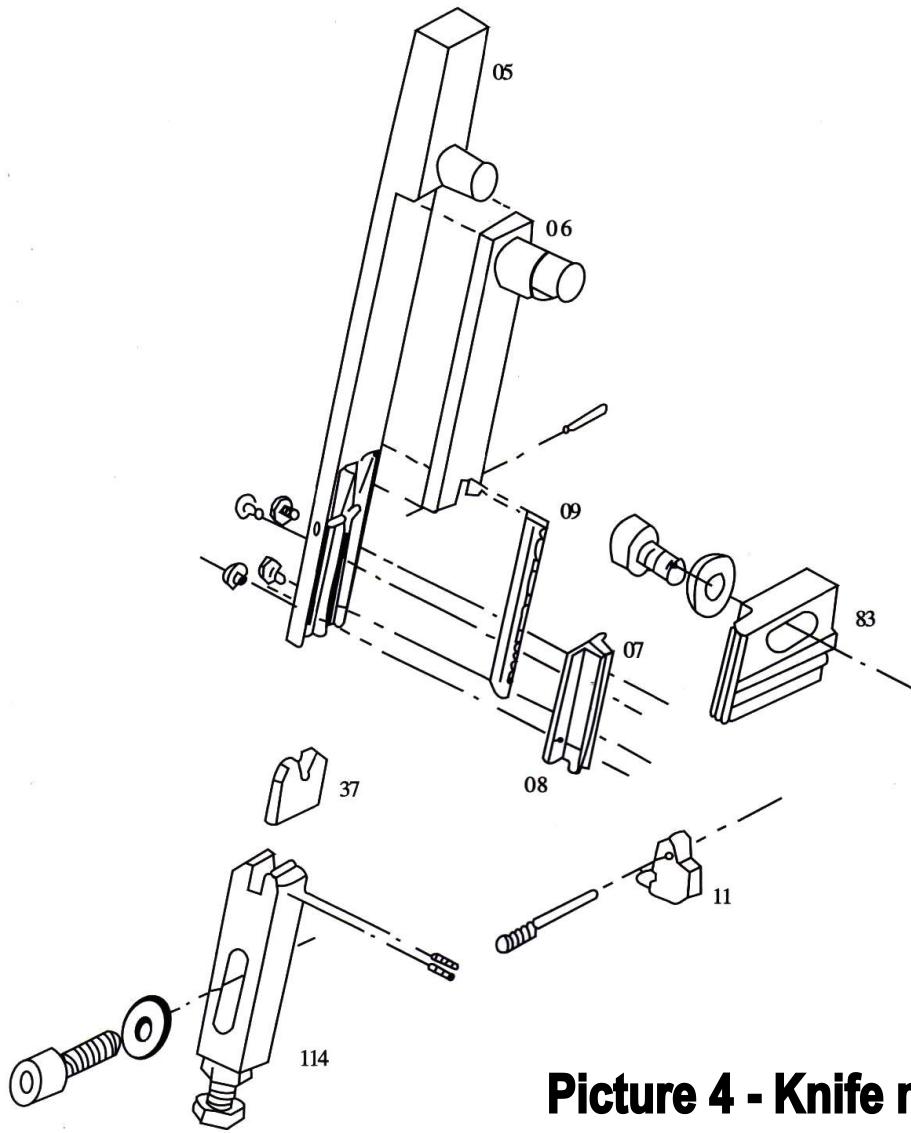
2-3 Knife mold options

1. For Slide knife mold and Piece push (11), Downward mold (37), Curved bottom mold (137). There are 7 sizes for options. Such as 03, 02, 01, 10, 20, 30, 40.
2. For Downward mold (37) & Curved bottom mold (137), there are two options as well. There are single arc and double arc.
3. For Cutting mold (83), there are 2mm, 4mm, 6mm, 8mm for selection depends the size, width, shape you request.



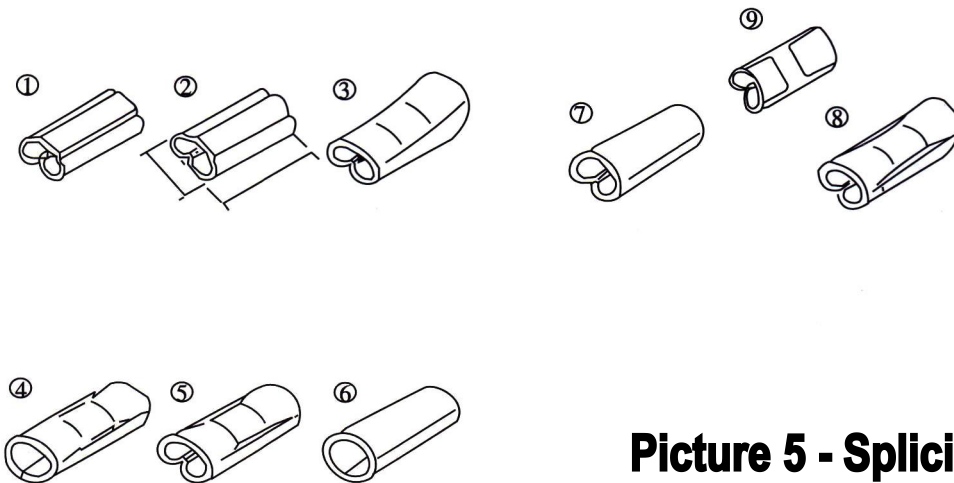
Picture 3

Splicing width (mm)	1.6	2.0	2.4	2.8	3.2	3.8	4.8	Splicing length (mm)	2	4	6	8
Model no. of knife	03	02	01	10	20	30	40	Knife width (mm)	2	4	6	8



05. Outer slide knife mold
06. Inner slide knife mold
07. Left mold piece
08. Right mold piece
09. Punch
11. Piece push
37. Downward mold
83. Cutting mold
114. Bottom mold shaft

Picture 4 - Knife molds



Picture 5 - Splicing types

3. Maintenance

3-1 Maintenance

1. To exchange the slide knife mold, you could put some oil into the hole of (03)
2. Please add some oil on the track of slide knife mold.

3-2 Notice

1. After adjustment, please place the main shaft right before turn the machine on and take off the spanner.
2. Please do NOT splice the double on the same connection.

4. Problem & Remedy

Problems	Cause	Remedy
The machine is no working	1. The fuse blew.	Please replace.
	2. The main is not right place.	Please turn to right place
	3. The machine is broken.	Please maintain.
The step switch is not working.	1. The step switch is broken.	Please maintain or replace.
	2. The circuit board is broken.	Please maintain or replace.
	3. The circuit is broken.	Please maintain or replace.
	4. The clutch is broken.	Please cut or replace.
	5. The clutch is worn.	Please replace.
Step the switch twice and more.	1. The clutch spring is fatigued.	Please cut or replace.
	2. The circuit board is broken.	Please maintain or replace.

5. Splicing quality check

Quality problems	Cause	Remedy
The deckle-edge is too big.	1. The gap of cutting mold & left mold piece is too big.	Please adjust the gap.
	2. The knife is worn.	Please sharp or replace.
The connection of U shape is not balance or it's horizontal	1. The material is too long or too short.	Please adjust the material and part (18).
	2. The downward mold (37) is not in the middle.	Please adjust.
The connection is not tight.	1. The place is not correct.	Please adjust part (114).
	2. The knife mold is not correct.	Please change the mold.
The material is outstanding.	1. Push shaft spring is broken.	Please replace.
	2. Part (11) is worn.	Please replace.

6. Specification

Name:	Splicing machine
Nominal pressure:	10KN
Copper band terminal:	2mm / 4mm / 6mm
Capacity:	200pcs / mm
Weight:	50 KGS
Size:	370 / 400 / 500 mm